

South Sudan - Refugees Statistics

as of 31 October 2016

KEY FIGURES

260,453
total refugee population

99%
Living in camps and settlements

257,378

82%

Are Women and Children

64,829
Households

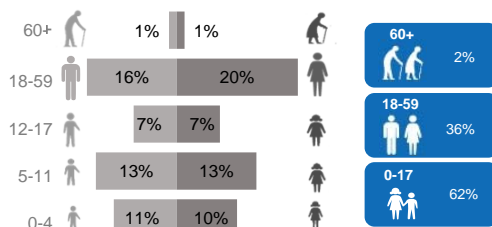
1%
Living in urban areas

3,075

52%

Are female

Age and gender breakdowns

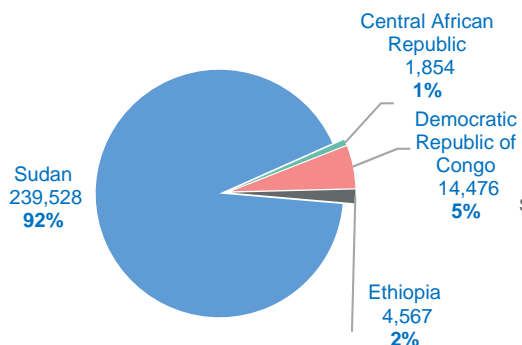


New arrivals trends

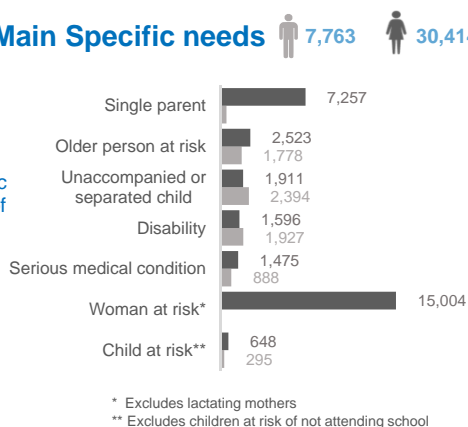
Aug 2015 – October 2016



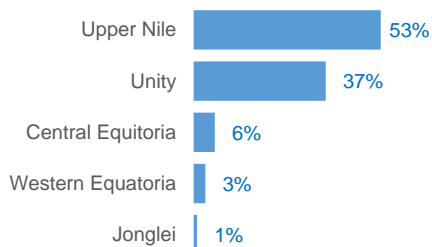
Main countries of origin



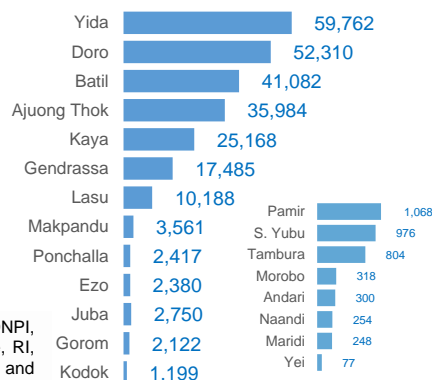
Main Specific needs



States hosting refugees



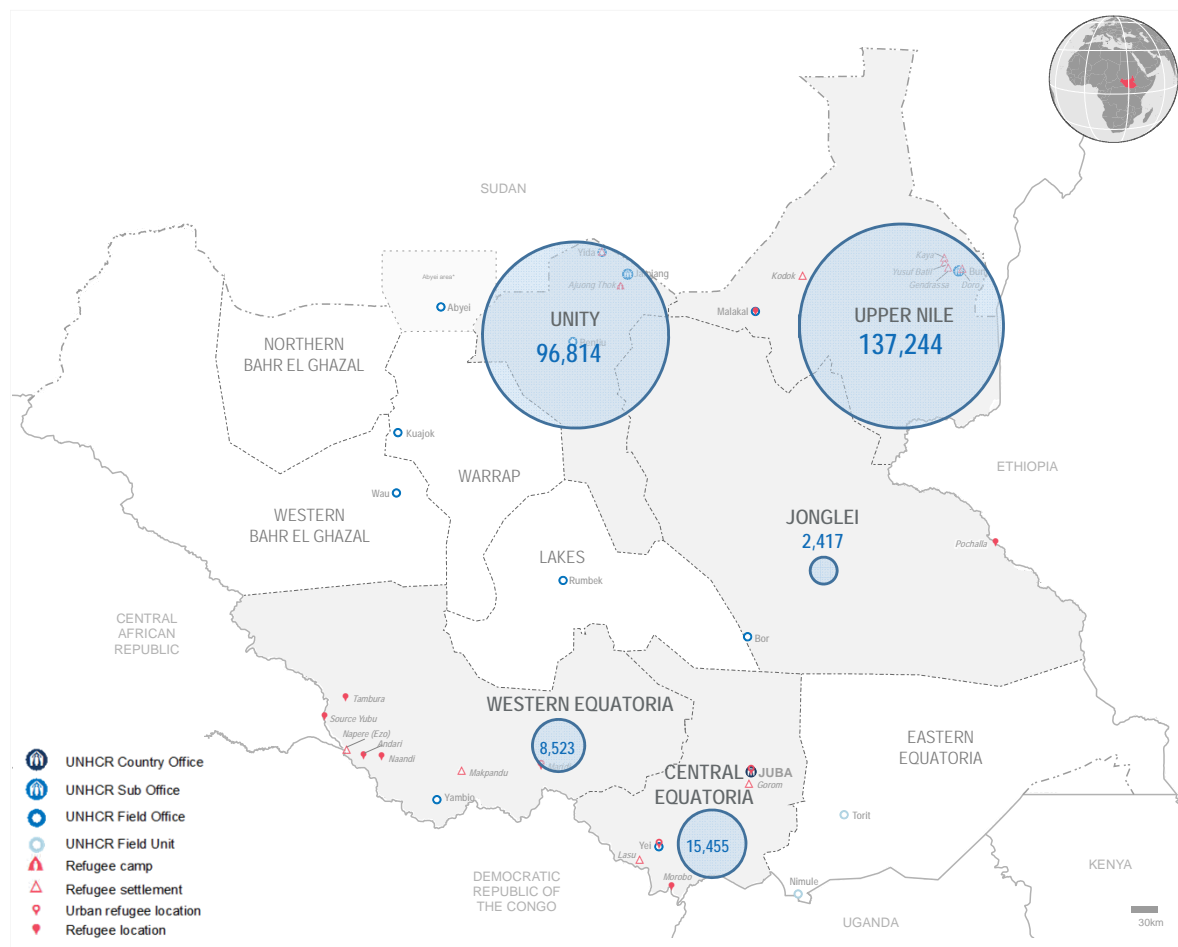
Refugee locations



Our Partners

AAHI, ADRA, AHA, ACROSS, ACTED, CARE, CRA, DNPI, DRC, HDC, HI, IMC, INTERSOS, IRC, LWF, Nile Hope, RI, SP, SCI, TOCH, UMCOR, UNOPS, UN, WAV, WDG and WVI.

Notes: In addition to 260,453 refugees, South Sudan hosts **1,575 asylum seekers** (Juba -1,484; Makpandu – 91) and **1.73 million IDPs**



South Sudan Refugee statistics: Population by Location, Sex and Age Group

as of the 31-October-2016



State	Location	0 - 4 years			5 - 11 years			12 - 17 years			18 - 59 years			60 years +			Total			Households		
		F	M	Total	F	M	Total	F	M	Total	F	M	Total	F	M	Total	F	M	Total	F	M	Total
Upper Nile	Doro	5,636	6,010	11,646	6,910	7,223	14,133	3,676	3,997	7,673	10,133	7,542	17,675	644	539	1,183	26,999	25,311	52,310	6,337	5,688	12,025
	Kaya	2,529	2,704	5,233	3,294	3,275	6,569	1,679	1,616	3,295	5,233	3,890	9,123	413	535	948	13,148	12,020	25,168	2,793	3,200	5,993
	Yusuf Batil	4,054	4,320	8,374	5,424	5,475	10,899	2,842	2,892	5,734	8,326	6,034	14,360	764	951	1,715	21,410	19,672	41,082	4,240	4,959	9,199
	Gendrassa	1,776	1,852	3,628	2,269	2,284	4,553	1,125	1,130	2,255	3,619	2,825	6,444	264	341	605	9,053	8,432	17,485	1,957	2,236	4,193
	Kodok	112	110	222	207	192	399	68	52	120	236	177	413	20	25	45	643	556	1,199	243	118	361
	Total	14,107	14,996	29,103	18,104	18,449	36,553	9,390	9,687	19,077	27,547	20,468	48,015	2,105	2,391	4,496	71,253	65,991	137,244	15,570	16,201	31,771
Unity State	Ajounj Thok	3,604	3,644	7,248	4,046	4,122	8,168	2,401	2,919	5,320	7,232	7,534	14,766	259	223	482	17,542	18,442	35,984	5,612	5,219	10,831
	Pamir	110	110	220	120	156	276	66	96	162	171	221	392	9	9	18	476	592	1,068	142	152	294
	Yida	6,454	6,498	12,952	9,455	9,532	18,987	5,190	4,184	9,374	12,356	5,090	17,446	622	381	1,003	34,077	25,685	59,762	9,376	3,413	12,789
	Total	10,168	10,252	20,420	13,621	13,810	27,431	7,657	7,199	14,856	19,759	12,845	32,604	890	613	1,503	52,095	44,719	96,814	15,130	8,784	23,914
Central Equatoria	Gorom	160	199	359	255	261	516	127	146	273	446	500	946	20	8	28	1,008	1,114	2,122	324	463	787
	Juba	100	129	229	161	147	308	61	54	115	338	1,706	2,044	4	50	54	664	2,086	2,750	158	1,679	1,837
	Lasu	944	965	1,909	1,283	1,282	2,565	801	806	1,607	1,990	1,825	3,815	190	102	292	5,208	4,980	10,188	1,380	1,449	2,829
	Morobo	37	31	68	41	54	95	22	27	49	57	41	98	3	5	8	160	158	318	38	41	79
	Yei	0	0	0	1	2	3	0	2	2	8	64	72	0	0	0	9	68	77	8	66	74
	Total	1,241	1,324	2,565	1,741	1,746	3,487	1,011	1,035	2,046	2,839	4,136	6,975	217	165	382	7,049	8,406	15,455	1,908	3,698	5,606
Jonglei State	Pochalla	135	145	280	281	294	575	326	349	675	622	214	836	36	15	51	1400	1017	2417	525	143	668
	Total	135	145	280	281	294	575	326	349	675	622	214	836	36	15	51	1,400	1,017	2,417	525	143	668
Western Equatoria	Andari	34	31	65	30	35	65	13	10	23	78	52	130	7	10	17	162	138	300	60	61	121
	Ezo	138	136	274	214	222	436	158	169	327	750	460	1,210	72	61	133	1,332	1,048	2,380	520	399	919
	Makpandu	348	334	682	476	417	893	215	234	449	746	690	1,436	51	50	101	1,836	1,725	3,561	463	614	1,077
	Maridi	7	12	19	43	34	77	17	17	34	50	67	117	0	1	1	117	131	248	41	62	103
	Naandi	23	23	46	36	33	69	14	18	32	48	47	95	6	6	12	127	127	254	39	44	83
	Source yubu	76	96	172	132	140	272	52	61	113	262	134	396	13	10	23	535	441	976	196	125	321
	Tambura	83	99	182	138	114	252	31	41	72	189	103	292	5	1	6	446	358	804	149	97	246
	Total	709	731	1,440	1,069	995	2,064	500	550	1,050	2,123	1,553	3,676	154	139	293	4,555	3,968	8,523	1,468	1,402	2,870
Grand total		26,360	27,448	53,808	34,816	35,294	70,110	18,884	18,820	37,704	52,890	39,216	92,106	3,402	3,323	6,725	136,352	124,101	260,453	34,601	30,228	64,829

South Sudan Statistics: Population by Country of Origin, Sex and Age Group



as of the 31-October-2016

Country of Origin	Settlement	Households (HHs)			Persons																	
		Total HHs	Female headed		0 - 4 years			5 - 11 years			12 - 17 years			18 - 59 years			60 years +			Total		
			HHs	%	F	M	T	F	M	T	F	M	T	F	M	T	F	M	T	F	M	T
CENTRA AFRICAN REPUBLIC	Andari	1	-	0%	0	0	0	0	0	0	0	0	0	0	1	1	0	0	0	0	1	1
	Ezo	13	7	54%	1	4	5	2	4	6	4	5	9	10	6	16	1	1	2	18	20	38
	Makpandu	34	7	21%	4	7	11	9	7	16	0	5	5	15	24	39	0	4	4	28	47	75
	Naandi	7	4	57%	0	5	5	2	2	4	0	0	0	5	3	8	0	0	0	7	10	17
	SourceYubu	309	188	61%	74	96	170	126	138	264	52	59	111	253	131	384	12	9	21	517	433	950
	Tambura	232	141	61%	79	95	174	135	111	246	31	41	72	180	97	277	3	1	4	428	345	773
	Total	596	347	58%	158	207	365	274	262	536	87	110	197	463	262	725	16	15	31	998	856	1,854
DEMOCRATIC REPUBLIC OF THE CONGO	Andari	120	60	50%	34	31	65	30	35	65	13	10	23	78	51	129	7	10	17	162	137	299
	Ezo	906	513	57%	137	132	269	212	218	430	154	164	318	740	454	1,194	71	60	131	1,314	1,028	2,342
	Juba	3	-	0%	1	1	2	-	1	1	-	-	-	1	2	3	-	1	1	2	5	7
	Lasu	2,246	1,222	54%	793	806	1,599	1,001	1,003	2,004	638	615	1,253	1,738	1,272	3,010	188	96	284	4,358	3,792	8,150
	Makpandu	965	429	44%	311	281	592	411	356	767	181	207	388	662	561	1,223	51	45	96	1,616	1,450	3,066
	Morobo	79	38	48%	37	31	68	41	54	95	22	27	49	57	41	98	3	5	8	160	158	318
	Naandi	76	35	46%	23	18	41	34	31	65	14	18	32	43	44	87	6	6	12	120	117	237
	SourceYubu	12	8	67%	2	-	2	6	2	8	-	2	2	9	3	12	1	1	2	18	8	26
	Tambura	14	8	57%	4	4	8	3	3	6	-	-	-	9	6	15	2	-	2	18	13	31
	Total	4,421	2,313	52%	1,342	1,304	2,646	1,738	1,703	3,441	1,022	1,043	2,065	3,337	2,434	5,771	329	224	553	7,768	6,708	14,476
ETHIOPIA	Doro	1	1	100%	-	-	-	-	-	-	-	-	-	1	-	1	-	-	-	1	-	1
	Gorom	787	324	41%	160	199	359	255	261	516	127	146	273	445	500	945	20	8	28	1,007	1,114	2,121
	Ponchalla	19	5	26%	2	2	4	1	2	3	-	-	-	8	13	21	-	-	-	11	17	28
	Ponchalla	668	525	79%	135	145	280	281	294	575	326	349	675	622	214	836	36	15	51	1,400	1,017	2,417
	Total	1,475	855	58%	297	346	643	537	557	1,094	453	495	948	1,076	727	1,803	56	23	79	2,419	2,148	4,567
SUDAN	Ajuong Thok	10,831	5,612	52%	3,604	3,644	7,248	4,046	4,122	8,168	2,401	2,919	5,320	7,232	7,534	14,766	259	223	482	17,542	18,442	35,984
	Batil	9,199	4,240	46%	4,054	4,320	8,374	5,424	5,475	10,899	2,842	2,892	5,734	8,326	6,034	14,360	764	951	1,715	21,410	19,672	41,082
	Doro	12,024	6,336	53%	5,636	6,010	11,646	6,910	7,223	14,133	3,676	3,997	7,673	10,132	7,542	17,674	644	539	1,183	26,998	25,311	52,309
	Gendrassa	4,193	1,957	47%	1,776	1,852	3,628	2,269	2,284	4,553	1,125	1,130	2,255	3,619	2,825	6,444	264	341	605	9,053	8,432	17,485
	Juba	1,791	153	9%	97	125	222	160	143	303	61	54	115	326	1,671	1,997	4	48	52	648	2,041	2,689
	Kaya	5,993	2,793	47%	2,529	2,704	5,233	3,294	3,275	6,569	1,679	1,616	3,295	5,233	3,890	9,123	413	535	948	13,148	12,020	25,168
	Kodok	361	243	67%	112	110	222	207	192	399	68	52	120	236	177	413	20	25	45	643	556	1,199
	Lasu	583	158	27%	151	159	310	282	279	561	163	191	354	251	553	804	2	6	8	849	1,188	2,037
	Makpandu	78	27	35%	33	46	79	56	54	110	34	22	56	69	105	174	-	1	1	192	228	420
	Maridi	103	41	40%	7	12	19	43	34	77	17	17	34	50	67	117	-	1	1	117	131	248
	Pamir	294	142	48%	110	110	220	120	156	276	66	96	162	171	221	392	9	9	18	476	592	1,068
	Yei	74	8	11%	-	-	-	1	2	3	-	2	2	8	64	72	-	-	-	9	68	77
	Yida	12,789	9,376	73%	6,454	6,498	12,952	9,455	9,532	18,987	5,190	4,184	9,374	12,356	5,090	17,446	622	381	1,003	34,077	25,685	59,762
	Total	58,313	31,086	53%	24,563	25,590	50,153	32,267	32,771	65,038	17,322	17,172	34,494	48,009	35,773	83,782	3,001	3,060	6,061	125,162	114,366	239,528
UGANDA*	Gorom	-	-	0%	-	-	-	-	-	-	-	-	-	1	-	1	-	-	-	1	-	1
	Lasu	-	-	0%	-	-	-	-	-	-	-	-	-	1	-	1	-	-	-	1	-	1
	Total	-	-	0%	-	-	-	-	-	-	-	-	-	2	-	2	-	-	-	2	-	2
SOMALIA SYRIA BURUNDI EGYPT ERITREA	Juba	3	-	0%	-	-	-	-	-	-	-	-	-	-	3	3	-	-	-	-	3	3
	Juba	3	-	0%	-	-	-	-	-	-	-	-	-	-	3	3	-	-	-	-	3	3
	Juba	2	-	0%	-	-	-	-	-	-	-	-	-	-	2	2	-	-	-	-	2	2
	Juba	1	-	0%	-	-	-	-	-	-	-	-	-	-	1	1	-	-	-	-	1	1
	Juba	15	-	0%	-	1	1	-	1	1	-	-	-	3	11	14	-	1	1	3	14	17
	Total	24	-	0%	-	1	1	-	1	1	-	-	-	3	20	23	-	1	1	3	23	26
Grand Total		64,829	34,601	53%	26,360	27,448	53,808	34,816	35,294	70,110	18,884	18,820	37,704	52,890	39,216	92,106	3,402	3,323	6,725	136,352	124,101	260,453

* Refers to spouses in mixed nationality marriages UNHCR Juba, South Sudan, 31-Oct-16