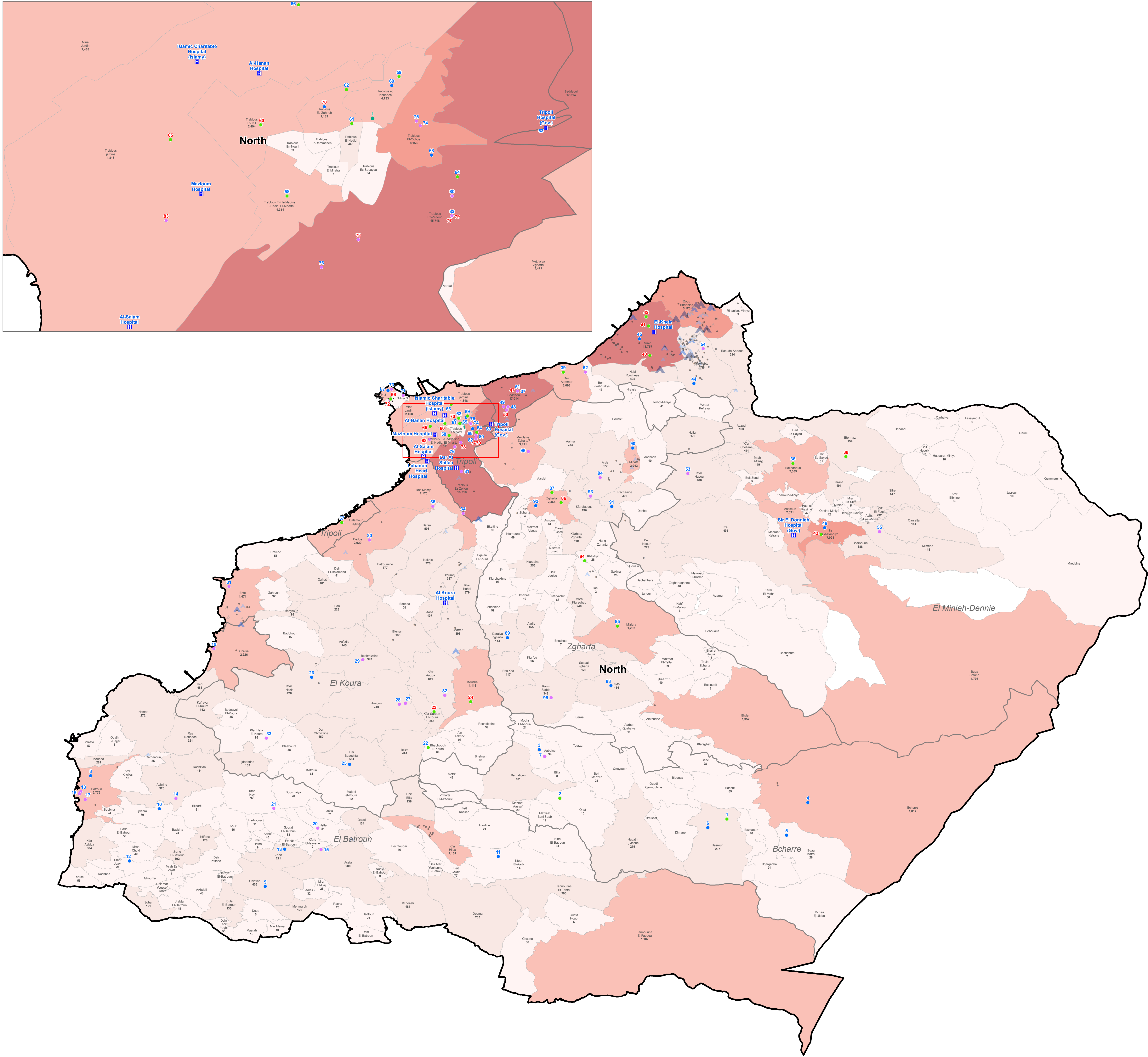


SYRIA REFUGEE RESPONSE

LEBANON North Governorate

Distribution of the Primary Health Care Centers and Hospitals (UNHCR/NEXtCARE)

Last update March 15, 2017



ID Number	Governorate	District	Type	Health Centers name English	Health Centers name Arabic	Most Vulnerable Localities	Partner	Malnutrition Screening Center	Malnutrition Management Center	VCT	YMCA	EPHSD
1	North	Barham	MOPH	Hassoun charity dispensary	مركز حسن حيدر الطبي			Yes			Yes	Yes
2	North	Barham	MOPH	Cedars Medical Center - CHH	مركز زهر الشجر الطبي			Yes				
3	North	Barham	MOSA SOC	MOSA SOC Barham								
4	North	Barham	MOSA SOC	MOSA SOC Barham								
5	North	Barham	MOSA SOC	MOSA SOC Barham								
6	North	Barham	MOSA SOC	MOSA SOC Barham								
7	North	Barham	MOSA SOC	MOSA SOC Barham								
8	North	El Baroun	MOSA SOC	MOSA SOC Barham		4th Most Vulnerable						
9	North	El Baroun	MOSA SOC	MOSA SOC Barham		4th Most Vulnerable						
10	North	El Baroun	MOSA SOC	MOSA SOC Barham		4th Most Vulnerable						
11	North	El Baroun	MOSA SOC	MOSA SOC Barham		4th Most Vulnerable						
12	North	El Baroun	MOSA SOC	MOSA SOC Barham		4th Most Vulnerable						
13	North	El Baroun	MOSA SOC	MOSA SOC Barham		4th Most Vulnerable						
14	North	El Baroun	MOSA SOC	MOSA SOC Barham		4th Most Vulnerable						
15	North	El Baroun	MOSA SOC	MOSA SOC Barham		4th Most Vulnerable						
16	North	El Baroun	MOSA SOC	MOSA SOC Barham		4th Most Vulnerable						
17	North	El Baroun	MOSA SOC	MOSA SOC Barham		4th Most Vulnerable						
18	North	El Baroun	MOSA SOC	MOSA SOC Barham		4th Most Vulnerable						
19	North	El Baroun	MOSA SOC	MOSA SOC Barham		4th Most Vulnerable						
20	North	El Baroun	MOSA SOC	MOSA SOC Barham		4th Most Vulnerable						
21	North	El Baroun	MOSA SOC	MOSA SOC Barham		4th Most Vulnerable						
22	North	El Baroun	MOSA SOC	MOSA SOC Barham		4th Most Vulnerable						
23	North	El Baroun	MOSA SOC	MOSA SOC Barham		4th Most Vulnerable						
24	North	El Baroun	MOSA SOC	MOSA SOC Barham		4th Most Vulnerable						
25	North	El Baroun	MOSA SOC	MOSA SOC Barham		4th Most Vulnerable						
26	North	El Baroun	MOSA SOC	MOSA SOC Barham		4th Most Vulnerable						
27	North	El Baroun	MOSA SOC	MOSA SOC Barham		4th Most Vulnerable						
28	North	El Baroun	MOSA SOC	MOSA SOC Barham		4th Most Vulnerable						
29	North	El Baroun	MOSA SOC	MOSA SOC Barham		4th Most Vulnerable						
30	North	El Baroun	MOSA SOC	MOSA SOC Barham		4th Most Vulnerable						
31	North	El Baroun	MOSA SOC	MOSA SOC Barham		4th Most Vulnerable						
32	North	El Baroun	MOSA SOC	MOSA SOC Barham		4th Most Vulnerable						
33	North	El Baroun	MOSA SOC	MOSA SOC Barham		4th Most Vulnerable						
34	North	El Baroun	MOSA SOC	MOSA SOC Barham		4th Most Vulnerable						
35	North	El Baroun	MOSA SOC	MOSA SOC Barham		4th Most Vulnerable						
36	North	El Baroun	MOSA SOC	MOSA SOC Barham		4th Most Vulnerable						
37	North	El Baroun	MOSA SOC	MOSA SOC Barham		4th Most Vulnerable						
38	North	El Baroun	MOSA SOC	MOSA SOC Barham		4th Most Vulnerable						
39	North	El Baroun	MOSA SOC	MOSA SOC Barham		4th Most Vulnerable						
40	North	El Baroun	MOSA SOC	MOSA SOC Barham		4th Most Vulnerable						
41	North	El Baroun	MOSA SOC	MOSA SOC Barham		4th Most Vulnerable						
42	North	El Baroun	MOSA SOC	MOSA SOC Barham		4th Most Vulnerable						
43	North	El Baroun	MOSA SOC	MOSA SOC Barham		4th Most Vulnerable						
44	North	El Baroun	MOSA SOC	MOSA SOC Barham		4th Most Vulnerable						
45	North	El Baroun	MOSA SOC	MOSA SOC Barham		4th Most Vulnerable						
46	North	El Baroun	MOSA SOC	MOSA SOC Barham		4th Most Vulnerable						
47	North	El Baroun	MOSA SOC	MOSA SOC Barham		4th Most Vulnerable						
48	North	El Baroun	MOSA SOC	MOSA SOC Barham		4th Most Vulnerable						
49	North	El Baroun	MOSA SOC	MOSA SOC Barham		4th Most Vulnerable						
50	North	El Baroun	MOSA SOC	MOSA SOC Barham		4th Most Vulnerable						
51	North	El Baroun	MOSA SOC	MOSA SOC Barham		4th Most Vulnerable						
52	North	El Baroun	MOSA SOC	MOSA SOC Barham		4th Most Vulnerable						
53	North	El Baroun	MOSA SOC	MOSA SOC Barham		4th Most Vulnerable						
54	North	El Baroun	MOSA SOC	MOSA SOC Barham		4th Most Vulnerable						
55	North	El Baroun	MOSA SOC	MOSA SOC Barham		4th Most Vulnerable						
56	North	El Baroun	MOSA SOC	MOSA SOC Barham		4th Most Vulnerable						
57	North	El Baroun	MOSA SOC	MOSA SOC Barham		4th Most Vulnerable						
58	North	El Baroun	MOSA SOC	MOSA SOC Barham		4th Most Vulnerable						
59	North	El Baroun	MOSA SOC	MOSA SOC Barham		4th Most Vulnerable						
60	North	El Baroun	MOSA SOC	MOSA SOC Barham		4th Most Vulnerable						
61	North	El Baroun	MOSA SOC	MOSA SOC Barham		4th Most Vulnerable						
62	North	El Baroun	MOSA SOC	MOSA SOC Barham		4th Most Vulnerable						
63	North	El Baroun	MOSA SOC	MOSA SOC Barham		4th Most Vulnerable						
64	North	El Baroun	MOSA SOC	MOSA SOC Barham		4th Most Vulnerable						
65	North	El Baroun	MOSA SOC	MOSA SOC Barham		4th Most Vulnerable						
66	North	El Baroun	MOSA SOC	MOSA SOC Barham		4th Most Vulnerable						
67	North	El Baroun	MOSA SOC	MOSA SOC Barham		4th Most Vulnerable						
68	North	El Baroun	MOSA SOC	MOSA SOC Barham		4th Most Vulnerable						
69	North	El Baroun	MOSA SOC	MOSA SOC Barham		4th Most Vulnerable						
70	North	El Baroun	MOSA SOC	MOSA SOC Barham		4th Most Vulnerable						
71	North	El Baroun	MOSA SOC	MOSA SOC Barham		4th Most Vulnerable						
72	North	El Baroun	MOSA SOC	MOSA SOC Barham		4th Most Vulnerable						
73	North	El Baroun	MOSA SOC	MOSA SOC Barham		4th Most Vulnerable						
74	North	El Baroun	MOSA SOC	MOSA SOC Barham		4th Most Vulnerable						
75	North	El Baroun	MOSA SOC	MOSA SOC Barham		4th Most Vulnerable						
76	North	El Baroun	MOSA SOC	MOSA SOC Barham		4th Most Vulnerable						
77	North	El Baroun	MOSA SOC	MOSA SOC Barham		4th Most Vulnerable						
78	North	El Baroun	MOSA SOC	MOSA SOC Barham		4th Most Vulnerable						
79	North	El Baroun	MOSA SOC	MOSA SOC Barham		4th Most Vulnerable						
80	North	El Baroun	MOSA SOC	MOSA SOC Barham		4th Most Vulnerable						
81	North	El Baroun	MOSA SOC	MOSA SOC Barham		4th Most Vulnerable						
82	North	El Baroun	MOSA SOC	MOSA SOC Barham		4th Most Vulnerable						
83	North	El Baroun	MOSA SOC	MOSA SOC Barham		4th Most Vulnerable						
84	North	El Baroun	MOSA SOC	MOSA SOC Barham		4th Most Vulnerable						
85	North	El Baroun	MOSA SOC	MOSA SOC Barham		4th Most Vulnerable						
86	North	El Baroun	MOSA SOC	MOSA SOC Barham		4th Most Vulnerable						
87	North	El Baroun	MOSA SOC	MOSA SOC Barham		4th Most Vulnerable						
88	North	El Baroun	MOSA SOC	MOSA SOC Barham		4th Most Vulnerable						
89	North	El Baroun	MOSA SOC	MOSA SOC Barham		4th Most Vulnerable						
90	North	El Baroun	MOSA SOC	MOSA SOC Barham		4th Most Vulnerable						
91	North	El Baroun	MOSA SOC	MOSA SOC Barham		4th Most Vulnerable						
92	North	El Baroun	MOSA SOC	MOSA SOC Barham		4th Most Vulnerable						
93	North	El Baroun	MOSA SOC	MOSA SOC Barham		4th Most Vulnerable						
94	North	El Baroun	MOSA SOC	MOSA SOC Barham		4th Most Vulnerable						
95	North	El Baroun	MOSA SOC	MOSA SOC Barham		4th Most Vulnerable						
96	North	El Baroun	MOSA SOC	MOSA SOC Barham		4th Most Vulnerable						

ID_number	Governorate	District	Type	Health Centers name English	Health Centers name Arabic	Most Vulnerable Localities	Pcode
1	North	North	TB	Tuberculosis Center Tripoli Zahrieh	مركز قشل خطر لسان الزهرية	Most Vulnerable	31161_33_001

Legend

Contracted Hospitals (10)

VCT (1)

Tuberculosis Center (TB) (1)

0

1 - 100

100 - 1,000

1,000 - 5,000

5,000 - 10,000

10,000 - 20,000

20,000 - 55,000

Informal settlements Less than four tents

Informal settlements four tents and above

Number of Individuals

11 - 50

51 - 100

101 - 150

151 - 387

Governmentate

Caza

0

4

8

KM

Notes

This map has been produced by the Inter-Agency Information Management Unit of UNHCR based on maps and material provided by the Government of Lebanon for operational purposes. It does not constitute an official United Nations map. The designations employed and the presentation of material on this map do not imply the expression of any opinion whatsoever on the part of the Secretariat of the United Nations concerning the legal status of any country, territory, city or area or of its authorities, or concerning the delimitation of its frontiers or boundaries.

Data Sources:
- Lebanese Border, Caza and Cadastral Boundaries: NPMP/LT 2005.
- Geographic Projection WGS 1984

Registered Refugees Figures by UNHCR as of 31 December 2016.
For more information contact Diana El Habr at elhabr@unhcr.org

GIS and Mapping by UNHCR. For information and updates
contact Jad Ghosn: ghosn@unhcr.org
Maroun Sader: sader@unhcr.org

NPMP/LT: National Physical Master Plan for the Lebanese Territory

