



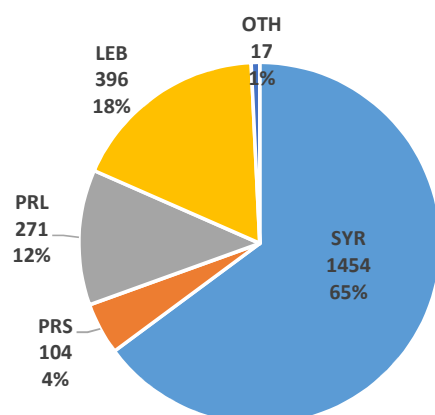
OUTCOME 5: Boys & girls at risk and survivors of violence, exploitation and abuse have access to an improved and equitable prevention & response

Output 5.2: Displaced and host community boys & girls at risk or survivors of violence have access to an integrated package of quality prevention and response services

Funding agencies: UNICEF, UNHCR, OCHA, independent sources.

Information management: Vicken Ashkarian, vashkarian@unicef.org

Indicator 5.2.2: # of boys & girls accessing CP & focused PSS

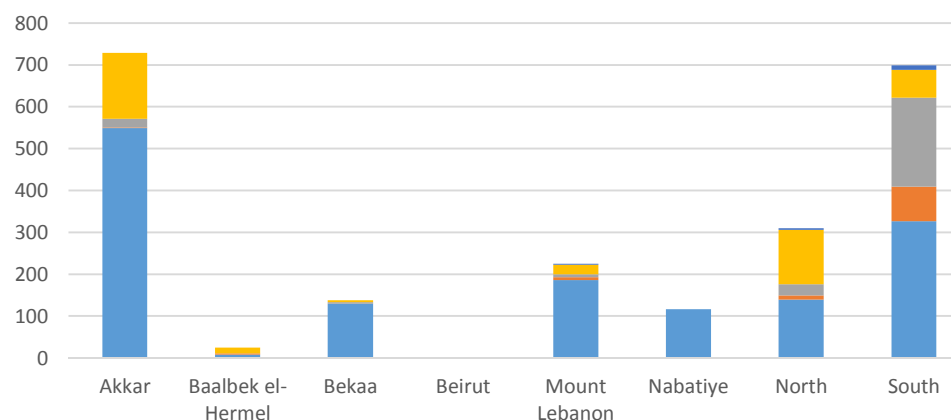


| Male | Female |
|------|--------|
| 52% | 48% |

| Activities per age groups | | |
|---------------------------|--------|---------|
| 0 - 5 | 6 - 11 | 12 - 17 |
| 6 | 530 | 834 |

| Disaggregations | | | |
|-----------------|------|-------|-----------|
| Cohorts | Sex | Age * | Risk type |
| 2242 | 2219 | 1370 | 864 |

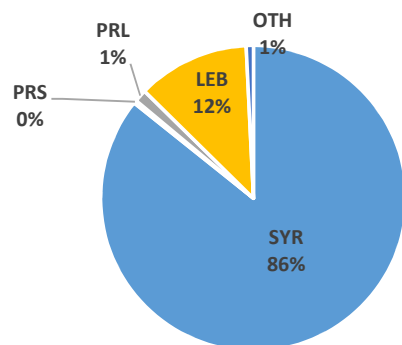
* Disaggregation by age excludes data from UNICEF Palestinian Program.



| Governorates | | | | | | | |
|--------------|-----|-------|--------|-----|-----|-----|-----|
| Akkar | B/H | Bekaa | Beirut | ML | Nab | Nt | St |
| 729 | 25 | 138 | 0 | 225 | 116 | 310 | 699 |

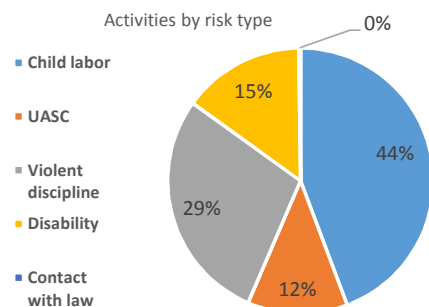
Partners: DRC/LRC, DRC, Mouvement Social, TdH - L, Mercy Corps, Intersos, SaJ, WVI, MAP, UNRWA

Indicator 5.2.3: # of boys & girls assisted through CP case management services

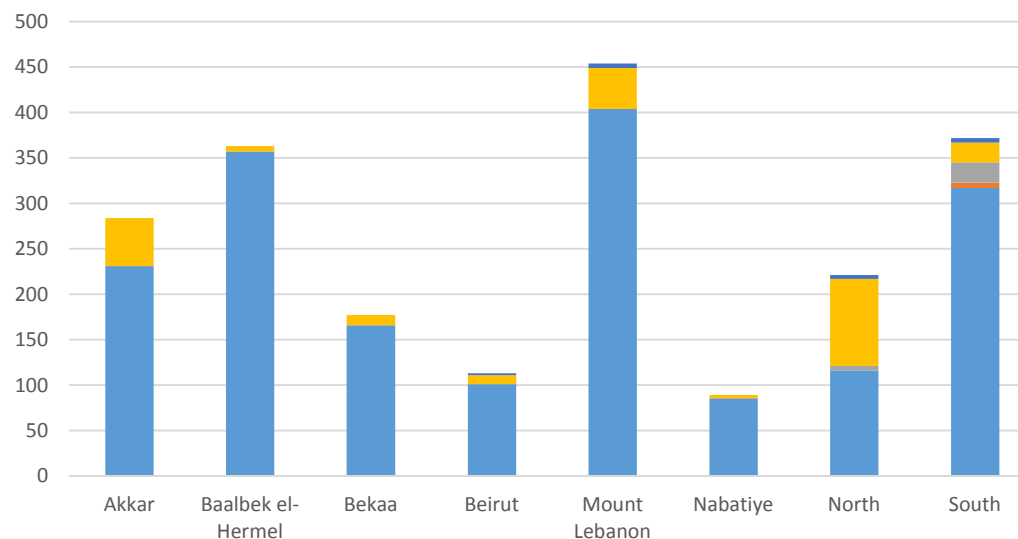


| Male | Female |
|------|--------|
| 59% | 41% |

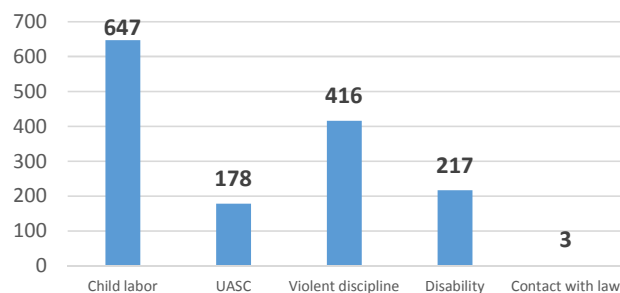
| Activities per age groups | | |
|---------------------------|--------|---------|
| 0 - 5 | 6 - 11 | 12 - 17 |
| 204 | 621 | 1245 |



| Disaggregations | | | |
|-----------------|------|------|-----------|
| Cohorts | Sex | Age | Risk type |
| 2073 | 2073 | 2070 | 1461 |

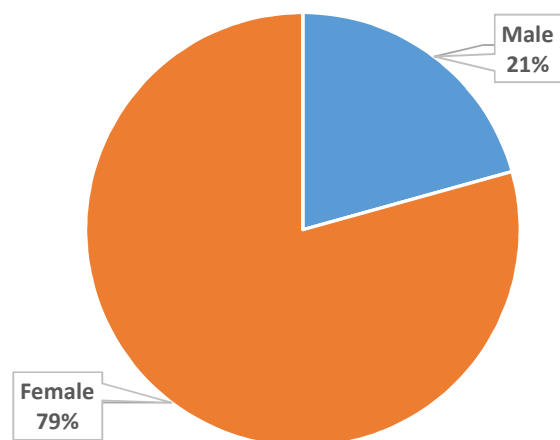


| Governorates | | | | | | | |
|--------------|-----|-------|--------|-----|-----|-----|-----|
| Akkar | B/H | Bekaa | Beirut | ML | Nab | Nt | St |
| 284 | 363 | 177 | 113 | 454 | 89 | 221 | 372 |

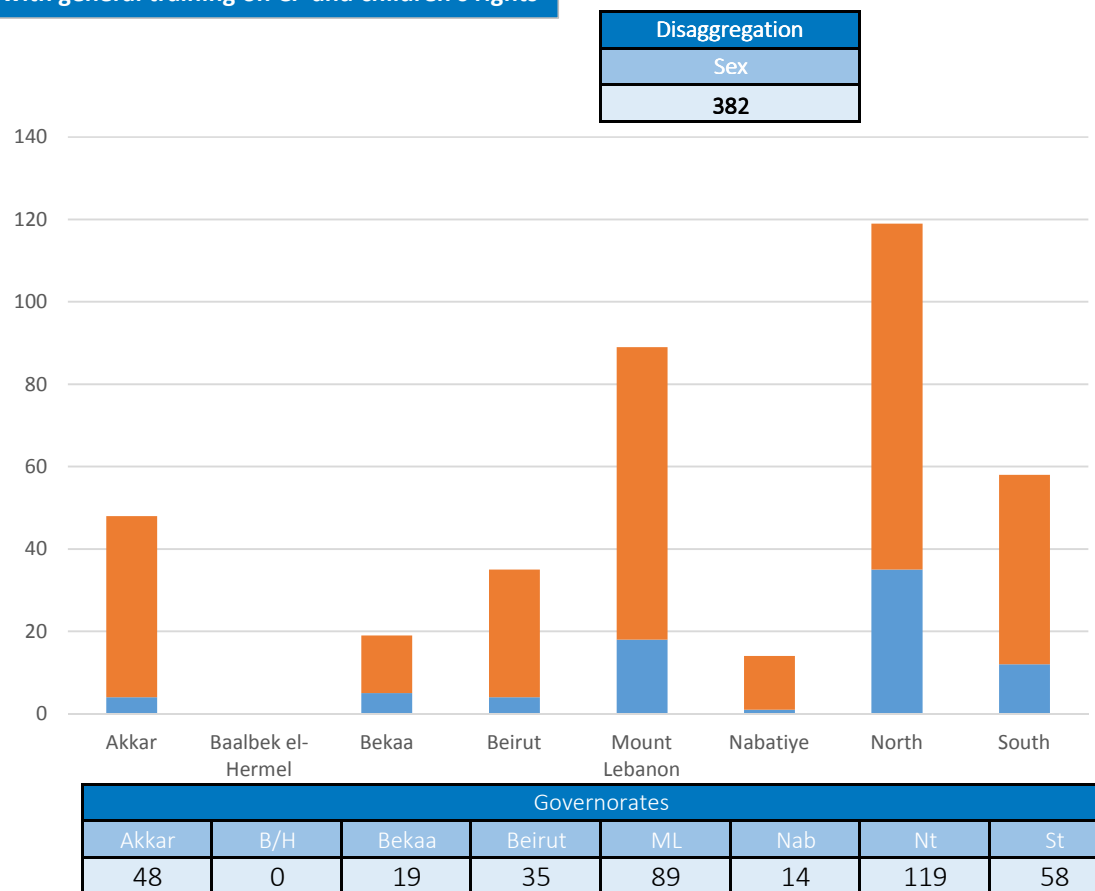


Partners: BZRD, DRC, Himaya, Intersos, IRC, Makhzoumi Foundation, Mercy Corps, Mouvement Social, SCI, TdH - It, TdH - L, WCH, YNCA.

Indicator 5.2.4: # of partners and government staff provided with general training on CP and children's rights

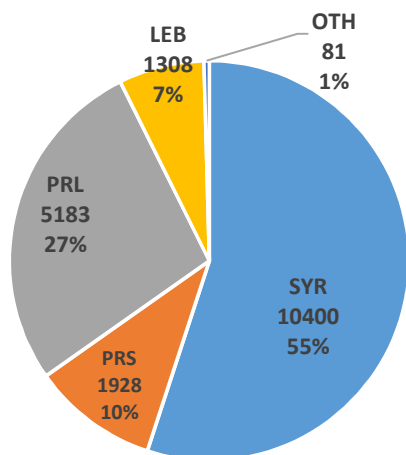


Partners: DRC, Intersos, IRC, Mercy Corps, Mouvement Social, RtP, SCI, WCH.



Output 5.3: Vulnerable children, families and communities supported to promote practices that protect them.

Indicator 5.3.2: # of boys & girls accessing CP prevention (for boys & girls: community based PSS)

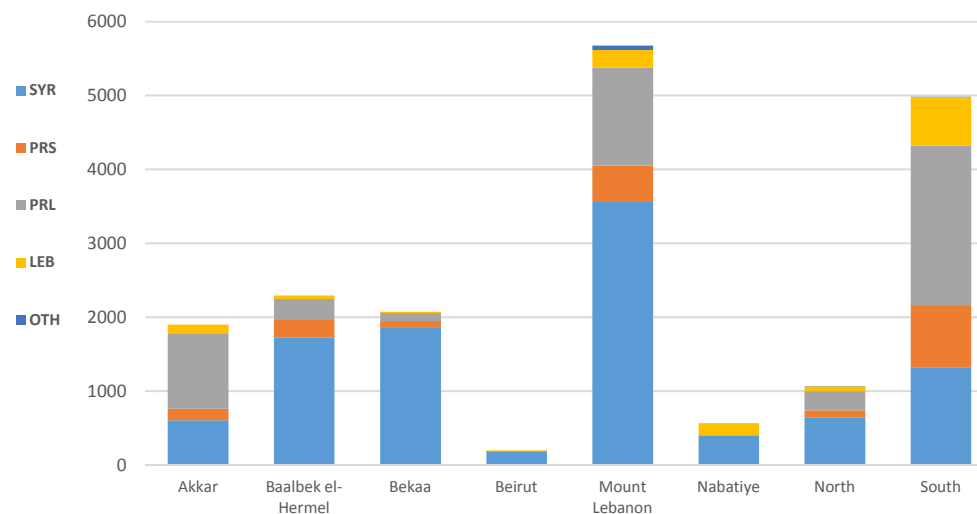


| Male | Female |
|------|--------|
| 49% | 51% |

| Activities per age groups | | |
|---------------------------|--------|---------|
| 0 - 5 | 6 - 11 | 12 - 17 |
| 773 | 7081 | 2296 |

| Disaggregations | | |
|-----------------|-------|-------|
| Cohorts | Sex | Age* |
| 18900 | 18695 | 10150 |

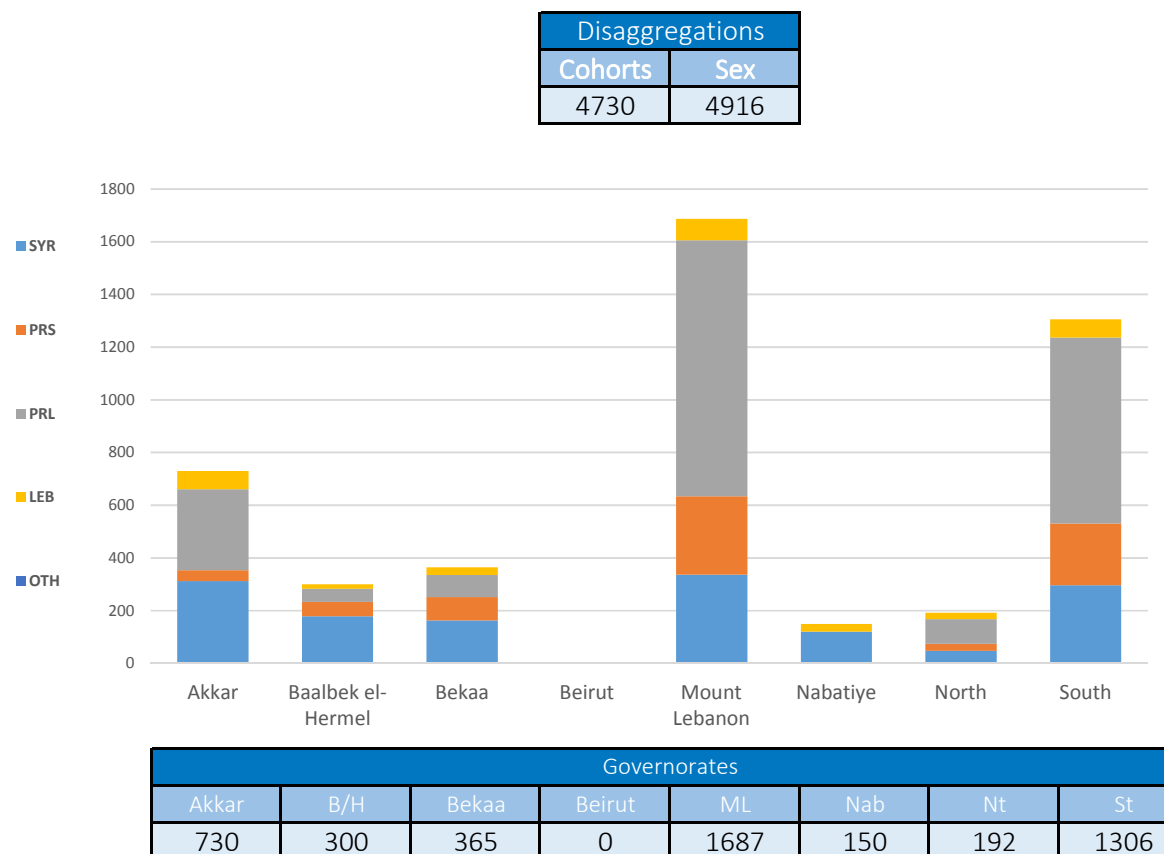
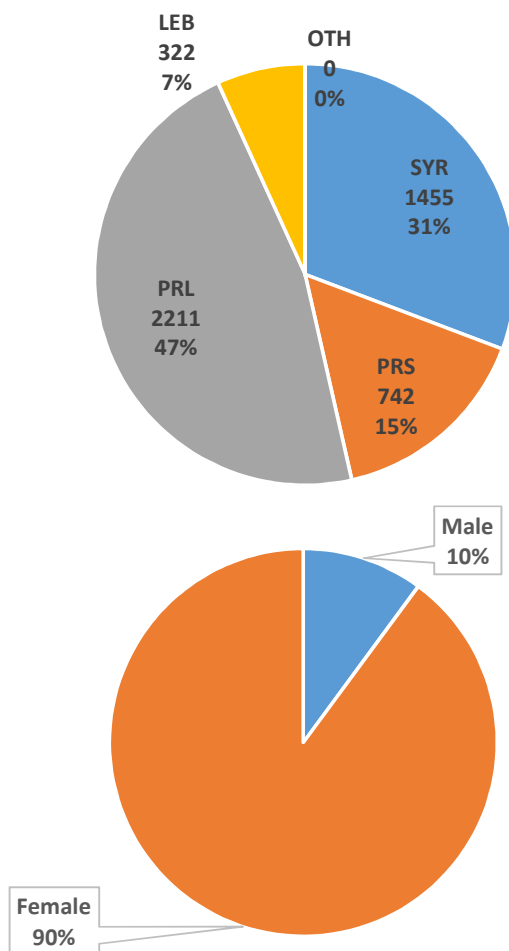
* Disaggregation by age excludes data from UNICEF Pal. Prog.



| Governorates | | | | | | | |
|--------------|------|-------|--------|------|-----|------|------|
| Akkar | B/H | Bekaa | Beirut | ML | Nab | Nt | St |
| 1901 | 2296 | 2073 | 197 | 5678 | 559 | 1070 | 4986 |

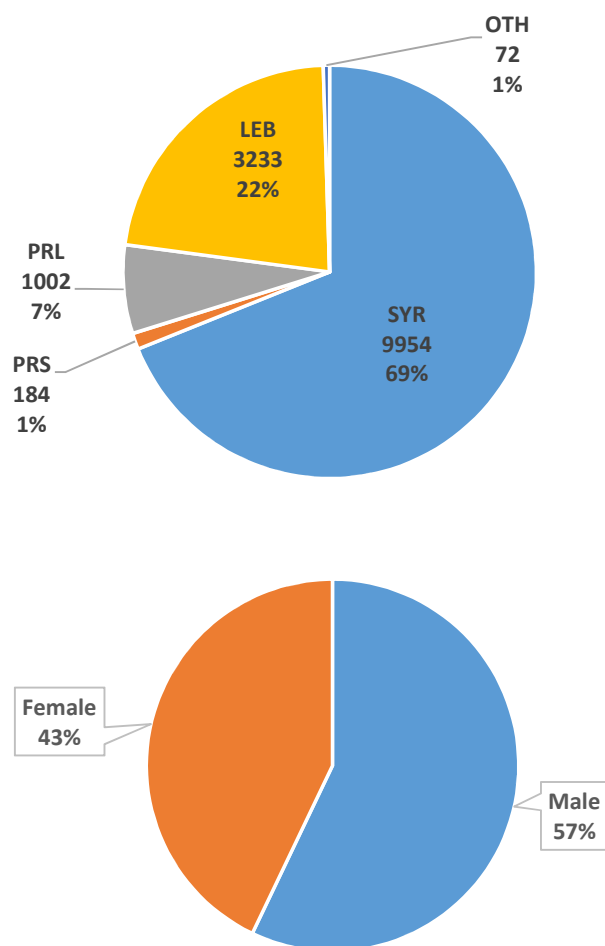
Partners: AMEL, ARCPA, Beyond, DRC, DRC/LRC, Intersos, IRC, Makhzoumi Foundation, MAP, Mercy Corps, RtP, SaJ, SCI, SIF, TdH - L, WCH, WVI, YNCA.

Indicator 5.3.3: # of caregivers accessing CP prevention (caregivers' programs)

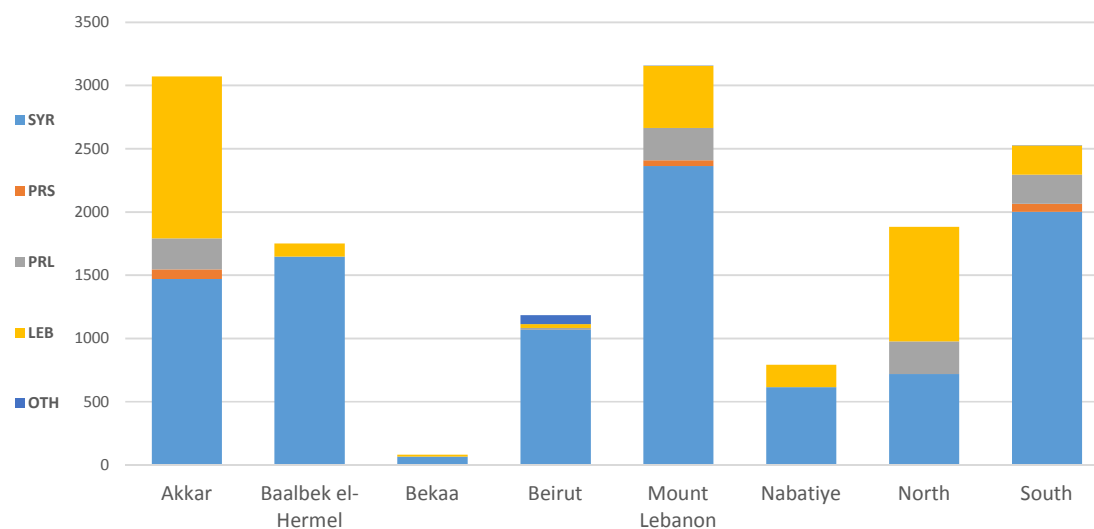


Partners: AMEL, ARCPA, BZRD, DRC, DRC/LRC, Intersos, IRC, MAP, Mercy Corps, Mouvement Social, SaJ, SCI, TdH - L, WVI, YNCA.

Indicator 5.3.4: # of girls & boys reached on key CP issues



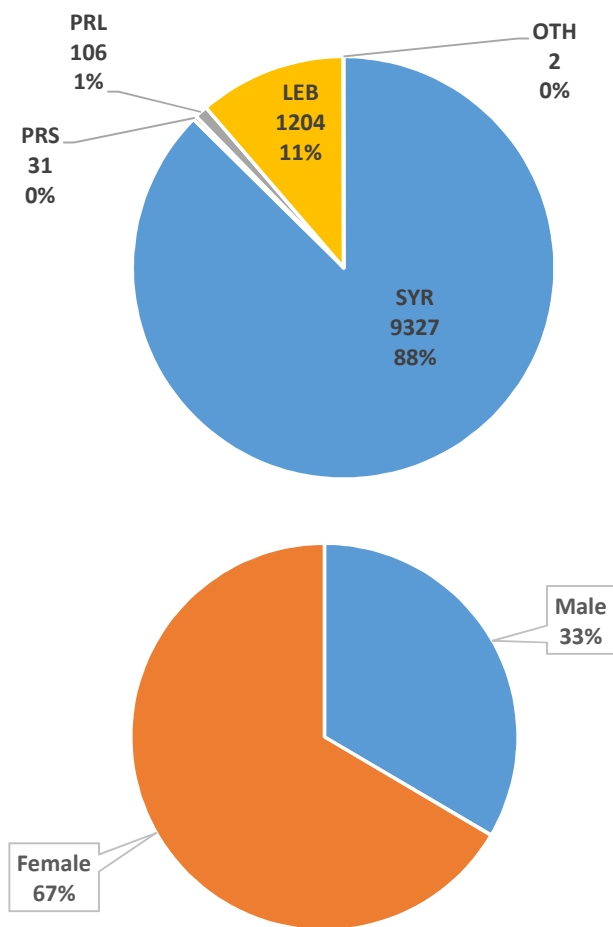
| Disaggregations | | |
|-----------------|-------|-------|
| Cohorts | Sex | Age |
| 14445 | 13924 | 11683 |



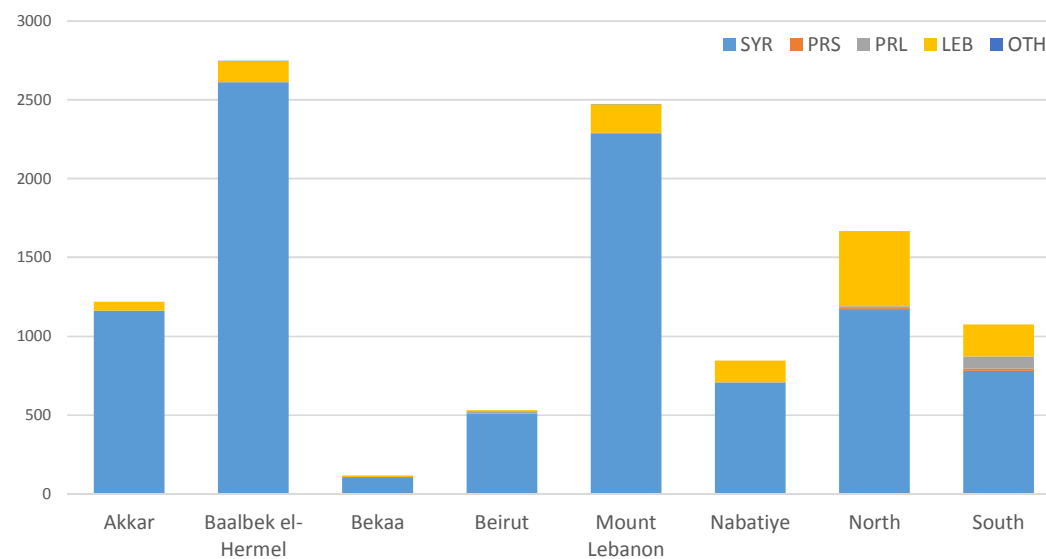
| Governorates | | | | | | | |
|--------------|------|-------|--------|------|-----|------|------|
| Akkar | B/H | Bekaa | Beirut | ML | Nab | Nt | St |
| 3071 | 1750 | 82 | 1183 | 3157 | 793 | 1882 | 2527 |

Partners: AMEL, DRC, DRC/LRC, Intersos, Makhzoumi Foundation, Mercy Corps, RtP, SaJ, SIF, TdH - It, TdH - L, WCH, WVI, YNCA.

Indicator 5.3.5: # of caregivers reached on key CP issues.



| Disaggregations | |
|-----------------|------|
| Cohorts | Sex |
| 10670 | 9585 |



| Governorates | | | | | | | |
|--------------|------|-------|--------|------|-----|------|------|
| Akkar | B/H | Bekaa | Beirut | ML | Nab | Nt | St |
| 1218 | 2746 | 118 | 530 | 2473 | 844 | 1667 | 1074 |

Partners: AMEL, BZRD, DRC, DRC/LRC, Intersos, IRC, Mercy Corps, Mouvement Social, Saj, SCI, TdH - L, WVI, YNCA.



OUTCOME 5: Boys & girls at risk and survivors of violence, exploitation and abuse have access to an improved and equitable prevention & response

Child Protection - All activities
Progress to target

