

South Sudan Situation

1 – 15 July 2017

1,969,344*

Total **South Sudanese refugees** in the region as of 15 July (pre and post Dec 2013 caseload)

536,034*

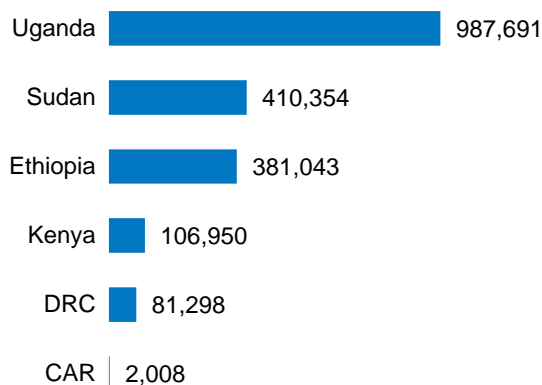
South Sudanese refugee **arrivals in 2017**, based on field reports as of 15 July

274,920

Refugees in South Sudan and **2 million IDPs** as of 30 June

SOUTH SUDANESE REFUGEES AS OF 15 JULY 2017

Host Countries



New Arrivals

	In 2016 (Jan to Dec)	In 2017 (as of 15 July)
CAR	659	317
DRC	61,125	13,542
Ethiopia	53,661	37,100
Kenya	22,501	14,891
Uganda	489,234	305,589
Sudan	134,370	64,595
TOTAL	761,550	536,034

KEY FIGURES*

63%

of the South Sudanese refugee population are children (under the age of 18 years old)

4.2 million

Total population of concern (South Sudanese refugees, South Sudanese IDPs and refugees inside South Sudan)

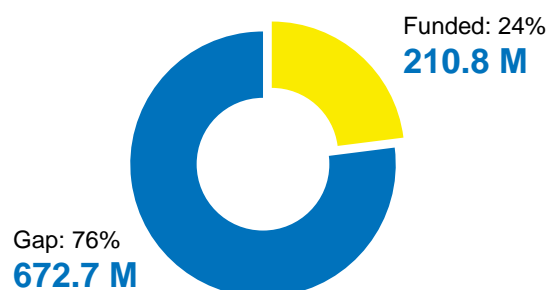
2,130,500

South Sudanese refugees are expected to be hosted in the region by 31 December 2017 (Revised 2017 RRP Planning figures)

FUNDING (AS OF 24 JULY 2017)

USD 883.5 M

requested for the South Sudan situation



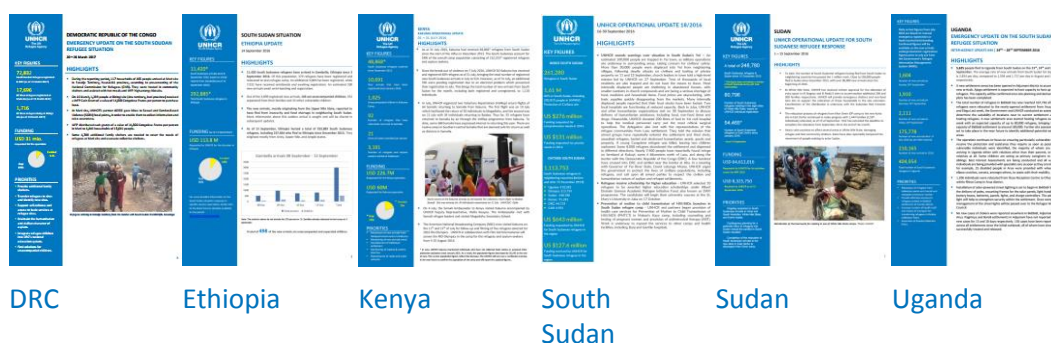
* The population and arrival figures are based on best available information at the time of production. UNHCR continues to verify the numbers in all countries and future updates may vary as new information becomes available.

Regional Highlights

- **Over 15,000 South Sudanese refugees fled South Sudan into neighbouring countries in the first half of July.** Uganda and Sudan continue to receive the majority of the new arrivals.
- **In South Sudan, fighting escalated near Pagak, Upper Nile, causing new displacements towards the Ethiopian border.** Aid agencies reported that thousands of civilians had been cut off from assistance as a result of the insecurity and relocation of humanitarian staff.
- **In Uganda,** preparations are ongoing for the opening of Rhino Camp Extension in Arua, in response to the continued influx of refugees into northern Uganda. The site due to begin receiving new refugees in early August.
- **In Sudan,** in response to the Acute Watery Diarrhea (AWD) outbreak in East Darfur, local authorities in East Darfur have called for the relocation of South Sudanese refugees from Ed Daein to Kario refugee camp, and are restricting some refugee movements outside of camps.
- **In the Democratic Republic of the Congo,** the Congolese authorities have allowed the relocation of the South Sudanese refugees away from the border to the former Kaka Refugee site. Relocations will commence once the security situation allows.
- **In Central African Republic,** the arrival of new internally displaced persons into Obo, where the South Sudanese refugees are currently located, is likely to put pressure on the town's already limited resources. UNHCR is monitoring the situation closely.
- **In Ethiopia,** a total of 2,688 South Sudanese refugees have been relocated from Gambella to Gure Shombola Camp in the Beninshangul-Gumuz region since 1 May. Nguenyiel Refugee Camp in Gambella, opened in October 2016, has almost reached its capacity of 60,000 persons.
- **In Kenya,** over 900 new South Sudanese refugees arrived at the border in the first two weeks of July. This is down from a peak in May, when over 4,000 refugees arrived during the month.

Updates and Achievements

For more detailed information on the South Sudan situation response in specific country operations, kindly refer to the latest county updates, hyperlinked below and available on the portal: data.unhcr.org/southsudan



SOUTH SUDAN

Latest developments

- **Fighting escalated near Pagak, Upper Nile, causing new displacements towards the Ethiopian border.** Thousands of civilians were internally displaced in Longochuk and Maiwut Counties, following clashes which began on 2 July in Mathiang County. Aid agencies reported that thousands of civilians had been cut off from assistance in key locations, including Mathiang, Maiwut, and Pagak, as a result of the insecurity and relocation of humanitarian staff.
- **On 12 July, David Shearer, Special Representative of Secretary General and Head of the United Nations Mission in South Sudan (UNMISS), said the Mission is considering opening a peacekeeping base in Yei region.** It would be the UNMISS's first such expansion since the civil war began in 2013. Since the re-eruption of violence in July 2016, the escalation of conflict in key towns in the Greater Equatoria region, including Yei, has caused a major outflow of refugees to Uganda. Prior to the July 2016 crisis, Yei's Lasu refugee settlement hosted over 10,000 refugees from the Democratic Republic of Congo (DRC), Sudan and the Central African Republic (CAR). Due to insecurity, UNHCR has not had access to Lasu settlement since September 2016.

Achievements and Impact

- **In Ajuong Thok Refugee camp, Unity, a verification exercise for vulnerable children commenced on 1 July and remains ongoing.** Out of a targeted population of 3,684 unaccompanied and separated children (UASC), a total of 1,744 UASC have been verified to the date.
- **In Juba, Central Equatoria, UNHCR provided cash assistance to families of 48 persons with specific needs.** This assistance was provided following an

earlier vulnerability assessment, which identified lack of food, dire living conditions, and lack of access to education because of school fees.

- **In Yei, Central Equatoria, UNHCR partner UMCOR delivered aid packages to 10 Sexual Gender Based Violence (SGBV) survivors** in Kukuyi, Yago, and Lomi. Packages consisted of sugar, laundry soap, rice, and salt.
- **In Yusuf Batil refugee camp, Upper Nile, UNHCR conducted two refresher trainings for 19 SGBV focal points** on prevention and response to SGBV incidences.
- **In Maban, Upper Nile, UNHCR recorded and referred 10 SGBV survivors** to its partners for further assistance. UNHCR also identified 42 children with specific needs and provided them with core relief items.
- **UNHCR and partners conducted a series of health-related trainings during the reporting period**, including pharmaceutical training in Juba, a youth training in Pamir refugee camp, Unity, a maternal, child and reproductive health training in Adjuong Thok camp, and a newborn care training in Maban.
- **In Ajuong Thok refugee camp, Unity, UNHCR supported 68 households (394 individuals) with metal fuel efficient stoves.** This assistance will improve refugees' safety and health, as well as reduce deforestation
- **In Yusuf Batil refugee camp, Upper Nile, UNHCR and partner Relief International (RI) supported a group of 22 women to produce 677 fuel efficient stoves** using local clay, sand, and cow dung materials. The stoves are hoped to improve access to energy, reduce environmental degradation and prevent SGBV as they reduce the need for women to collect firewood.
- **In Upper Nile, UNHCR and partner RI supported the refugees to transplant 7,311 tree seedlings in Doro camp and Yusuf Batil.** Once fully grown, these trees will provide timber for shelter construction, including firewood in the camps.
- **IDP RESPONSE:** In Bor, Jonglei, UNHCR conducted a one-day training on protection, protection monitoring and use of focus group discussions for 13 partner staff drawn from INTERSOS, Humanitarian Development Consortium (HDC), and Nile Hope. UNHCR partner INTERSOS conducted a two-day Gender Based Violence (GBV) training for 30 participants drawn from local authorities, including members of the legal administration, prison services, police, women's group representatives, church leaders, members of local youth groups, and members of the traditional courts. In Juba, Central Equatoria, UNHCR GBV Sub Cluster organised a one-day training for 30 participants on SGBV prevention and response to strengthen the capacity of UNHCR and its partners working in the Protection of Civilians, 1 and 3.

CENTRAL AFRICAN REPUBLIC

Latest developments

- **In the first half of July, an estimated 3,854 IDPs from Zemio and Mboki arrived in Obo, where the South Sudanese refugees are currently located.** Due to its remote location in the far eastern region of the country, Obo had largely been spared from the impact of months of increasing violence in southern and eastern parts of CAR. The arrival of the IDPs is likely to place further pressure on the town's already limited resources. The refugee population's continued access to resources will be closely monitored by UNHCR Field Office in Obo.

Achievements and Impact

- **During the first half of July, the South Sudanese refugees in Obo received plastic sheeting** to cover the roofs of partially damaged shelters and tents.

DEMOCRATIC REPUBLIC OF THE CONGO

Latest developments

- **During the first half of July, 523 South Sudanese refugees were biometrically registered in the DRC.** The majority (92 per cent) were registered at the Meri site (Haut-Uélé province), with the remaining 8 per cent registered at the Biringi site (Ituri province). The number of South Sudanese new arrivals into the DRC is progressively decreasing with 3,208 arrivals in April, 2,139 in May and 1,280 in June.
- **On 15 July, UNHCR received information from different sources reporting an increase in the number of refugees crossing the border with South Sudan in the vicinity of Kengezi base, Arile and Ulendere.** A border monitoring mission was launched on 16 July to cover the different entry points and assess the movement.
- **The Congolese authorities have allowed the use of the former Kaka Refugee Site to relocate South Sudanese refugees.** The site, located a few kilometres from Dungu (Haut-Uélé), is at safer distance from the border, ensuring the protection of and assistance to the South Sudanese refugees present in the area. At the time of reporting, relocation had yet to begun due to insecurity in the area.

Achievements and Impact

- **In Meri and Biringi, SGBV prevention and response activities were ongoing.** A total of 441 South Sudanese refugees were sensitized on SGBV prevention and response and four SGBV survivors received medical and psycho-social support.
- **In the first half of July, 31 Best Interest Assessments were conducted for unaccompanied and separated South Sudanese refugee children in Biringi.** An additional four separated children were identified during biometric registration in Meri.

- **In Biringi, the vigilance committee was reactivated** and equipped with boots, whistles, torches and bats to support the police in ensuring security at the site.

ETHIOPIA

Latest developments

- **Between 1 and 15 July 2017, 270 South Sudanese refugees arrived in Gambella, Ethiopia.** All the new arrivals were Level-1 registered. A total of 147 refugees were successfully relocated from Pagak in Gambella to Gure Shombola Camp, covering a distance of over 800km, while a further 2,943 South Sudanese refugees are awaiting relocation to the new camp.
- **Some 26 South Sudanese arrivals of Murle ethnicity arrived in Okugo Camp during the reporting period and were registered by ARRA/UNHCR.** The arrivals entered Ethiopia and proceeded to Okugo via the Raad entry point from Pibor State, South Sudan.
- **An additional 88 South Sudanese new arrivals were registered in Assosa, who crossed through Yabus entry point.**
- **During focus group discussions with children, adolescents and youth in Pagak, participants indicated their main reasons** for flight were conflict, famine, family separation, loss of life due to lack of food, the killing of the children and elderly persons, and the destruction of houses. The children reported that the journey to Ethiopia lasts for up to 15 days, exposing them to further risks, including the abduction.

Achievements and Impact

- **A total of 2,688 South Sudanese refugees have been relocated in eight convoys and accommodated in Gure Shombola Camp in the Beninshangul-Gumuz region since 1 May.** During the 7th & 8th relocation convoys from Pagak to Gure Shombola, 136 refugees received medical treatment at Metu and Gimbi way stations.
- **A total of 6,938 persons were reached through Gender Based Violence (GBV) awareness activities** focusing on causes and consequences of GBV, risk mitigation, referral pathways and services available. Moreover, 90 women identified to be at risk of GBV were provided with solar lanterns.
- **With the support from the Gambella Regional Health Bureau and UNICEF, vaccination, supplementation and deworming of newly arrived South Sudanese refugee children remained ongoing.** Emergency health services in Pagak are in place, with 920 consultations conducted during the reporting period. Malaria remains the leading cause of mortality. Due to a shortage of mosquito nets at the Reception Centre, distribution is taking place upon arrival at the camp.
- **Nutrition screening was ongoing during the reporting period.** Some 232 children under the age of five were screened in Pagak, of whom 11 were found

severely malnourished and 26 moderately malnourished. The Global Acute Malnutrition rate amongst new arrivals stood at above the emergency threshold at 15.9 per cent. Hot meals continue to be provided at the way stations by Partner for Refugee Service with technical support from UNHCR. The Blanket Supplementary Feeding Programme was ongoing in the camps, with 565 children under the age of five, 142 Pregnant and 95 Lactating Women newly admitted. An additional 5,399 PLW and children below the age of two were admitted to the Infant and Young Child Feeding Programme.

- **An average of 17 litres of potable water per person per day were provided to refugees in Gambella.** Routine hygiene promotion activities, including house visits, general sanitation campaigns, jerry can washing, hand washing campaigns, and latrine cleaning, were ongoing across all camps. Over 15km of the planned 18km for the pipeline from Itang to Nguenyiel camp has been completed whilst foundation work for the Nguenyiel Camp water storage reservoir has commenced.
- **During the reporting period, 101 transitional shelters were constructed** in Pugnido I and II, Okugo and Terkidi camps.

KENYA

Latest developments

- **A total of 933 newly arrived South Sudanese refugees were registered in the first half of July**, including 105 unaccompanied and separated children (UASC). As of 15 July, there are a total of 11,452 South Sudanese UASC registered in Kenya.

Achievements and Impact

- **SGBV prevention and response activities were ongoing throughout the reporting period in Kakuma and Kalobeyei settlement.** A total of 10 cases of SGBV were reported among the South Sudanese refugee population in the first half of July. Comprehensive medical and psychosocial support was offered to survivors, including referrals for legal and material support.

SUDAN

Latest developments

- **The Commission for Refugees (COR) and the Sudanese Red Crescent Society (SRCS) have reported the arrival of nearly 3,000 South Sudanese refugees in South Darfur over a 10-day period**, including 988 new arrivals to Buram and approximately 2,000 in El Radom. COR will begin household (Level 1) registration of new arrivals in both locations and UNHCR registration teams have been dispatched to support registration activities.
- **In response to the Acute Watery Diarrhea (AWD) outbreak in East Darfur, local authorities in East Darfur have called for the relocation of South**

Sudanese refugees from Ed Daein to Kario refugee camp, and are restricting some refugee movements outside of camps. COR initially voluntarily relocated 532 refugees from Ed Daein town to the Kario camp; however, no further relocations have been reported. Severe shortages of fuel wood and other goods, as well as reduced access to livelihood opportunities, have been observed in the camps due to the movement restrictions. Presently, no evidence links the AWD outbreak to refugee arrivals. UNHCR is concerned the relocations will further congest the camp and increase risks to refugee health, and continues to advocate for refugees' freedom of movement.

- **On 9 July, UNHCR received reports from the American Refugee Council (ARC) of 11 suspected AWD cases, with 8 deaths, in the Al Nimir refugee camp, East Darfur.** WHO and the State's Ministry of Health (SMoH) have sent a technical team to verify the cause of death and investigate further. ARC has established an isolated treatment clinic at Al Nimir since 10 July. An estimated 455 AWD cases have been observed in East Darfur since 22 June, which has so far affected refugees in Kario and Al Nimir refugee camps, as well as resident populations in Ed Daein Town, Khor Omer and Khazan Jadid locality.

Achievements and Impact

- **New arrivals continued to be reported in El Megenis and Joda border reception centres in White Nile.** A total of 513 individuals (225 household) have been verified as of 15 July. According to COR, new refugee arrivals may be expected in the state over the next few weeks due to ongoing conflict reported inside Upper Nile state of South Sudan, approximately 40 km away from Joda border area.
- **UNHCR and COR continued to roll-out individual biometric (Level 2) registration in South and West Kordofan** with a total of 16,351 individuals in South Kordofan and 6,174 individuals in West Kordofan registered so far. New arrivals continued to be reported in both states.
- **On 5 July, UNHCR, COR and WFP completed Level 1 registration for South Sudanese refugees residing in El Fasher Town, North Darfur.** A total of 249 households (759 individuals) were registered, the majority of whom are women and children. Non-food items (NFI) and food distribution will follow shortly.
- **UNHCR, through SRCS, completed the construction of a new reception centre at Um Jalala entry point, White Nile, including communal shelters, administrative facilities and a health clinic.** UNHCR and COR have nearly completed the expansion of the El Megenis reception centre, which will include four new communal shelters, fencing and staff accommodation to boost capacity to process and support new arrivals. El Megenis remains the main entry point for new arrivals to White Nile state.
- **COR and local authorities in El Radom locality, South Darfur, have allocated land for South Sudanese refugees to establish shelters near El Radom town.**

Shelter kits have been dispatched. Plastic sheeting was distributed to refugees to reinforce makeshift shelters as a temporary measure.

UGANDA

Latest developments

- **A total of 9,945 South Sudanese refugees arrived in Uganda in the first half of July, at an average daily rate of 663.** The majority of new arrivals are women and children, who report that the security situation in South Sudan continues to deteriorate, with ethnically motivated attacks, prolonged violent conflict and forcible recruitment of young people by armed groups as reasons for fleeing to Uganda.
- **New arrivals report ongoing clashes between armed forces in Morobu County, Yei River State.** The fighting is expected to displace more people from the area, potentially leading to an increased influx into Uganda in the coming weeks.
- **In response to the continued influx of refugees into northern Uganda, preparations are ongoing for the opening of Rhino Camp Extension in Arua,** which is due to begin receiving new refugees in early August.
- **The UK Minister of State for the Department for International Development and Minister of State for the Foreign and Commonwealth Office, Mr Rory Stewart visited Arua settlements accompanied by UNHCR Representative to Uganda, Mr Bornwell Kantande, and British High Commissioner to Uganda, Mr Peter West.** They visited the Imvepi Reception Centre, Vurra Cope Primary School in Rhino Camp and a DFID-funded agricultural project.

Achievements and Impact (covering 5 – 18 July)

- **Identification of children at risk is ongoing across all settlements, with vulnerable children being referred to the appropriate services according to their needs,** including medical, psychosocial counselling and family tracing services. In Adjumani, group dialogues were held with 330 primary school children on forms of child abuse, children's rights, the role of boys and girls in identifying their protection needs and challenges, participation of children in prevention and response to child abuse and knowledge of reporting and referral pathways.
- **SGBV cases continue to be identified and followed up across the settlements.** Following concerns raised by women about SGBV risks in Bidibidi Zone 3, group discussions were organised to address safety issues. The community mobilized to clear bushes, continue neighbourhood watch patrols and increase vigilance. In Adjumani, the community watch group and activists went door-to-door educating the community on SGBV. In Palorinya, 20 street solar lights and thirteen solar panels were installed to improve security and reduce the risk of SGBV incidents at night.

- **In northern Uganda, UNHCR and partners continued to support feeding programmes for children aged 6-59 months old and pregnant and lactating mothers in all settlements.** A 30-day dry food ration is provided to all registered refugees who have been relocated to their respective plots, while hot meals are provided the reception centre and high energy biscuits are provided at the collection points.
- **Nutrition screening activities were conducted at health facilities, community contact points, border points and reception centres.** The rate of malnutrition was 2 per cent among refugees screened at Rhino Camp; 3.1 per cent at Imvepi Reception Centre; 2 per cent in Palorinya and 13.6 per cent in Adjumani, compared to the UNHCR standard of less than 10 per cent.
- **As in previous months, the leading causes of illness across all settlements were malaria, respiratory tract infections and acute watery diarrhea.** In all settlements, health facilities continue to provide maternal health services to expectant women and new mothers, delivering babies and working to prevent mother-to-child transmission of HIV. Health partners provided outpatient and inpatient services and referred patients who required more specialized treatment to hospitals in Arua and elsewhere. Through counselling, testing and condom distribution, partners continued their effort to prevent HIV infection in both refugee and host communities.
- **Across the settlements, livelihood activities are ongoing,** including distribution of seedlings for planting and agricultural training, establishment of farming groups, identification of arable land for farming and vocational training for income-generating activities.

Critical Needs and Priorities

DEMOCRATIC REPUBLIC OF THE CONGO

Health: Due to the important gaps in shelter and WASH, the risk of epidemics such as cholera is extremely high in Meri. Many refugees do not have access to mosquito nets.

Water and sanitation: Water supply remains problematic in all sites. At the Meri site, 36 water points, 309 community latrines and almost 7,000 family latrines are required.

Shelter: 5,170 emergency shelters and 20 hangars are urgently needed to provide basic support to the refugee population in Meri.

Security: 52 additional police officers are urgently needed to reach the minimal standard and secure the Meri for the 24,000 refugees present. This gap is critical in view of the insecurity on the other side of the border (less than 20 km away) and in absence of a strong Congolese military presence in the area.

ETHIOPIA

Shelter: Some 52% of the refugee households registered in Gambella camps are in need of transitional shelter assistance. Shortage of funding limits the provision of key services such as education, shelter, WASH facilities, as well as livelihoods activities. The current rainy season has delayed construction of key infrastructure at the camps and reception.

SOUTH SUDAN

Protection: Lack of access to refugees' hideouts in Lasu settlement, Central Equatoria, continues to hinder the delivery of assistance to Persons with Specific Needs (PSNs).

Health: In Yusuf Batil, Gendressa, and Kaya refugee camps, Upper Nile, the current security situation is limiting the scope of health care provision.

SUDAN

Shelter: Shelter for refugees in El Radom, South Darfur, remains an urgent need.

UGANDA

Protection: There is a need to increase security lighting in Bidibidi, particularly in areas where women and girls collect firewood, to reduce the risk of SGBV incidents at night.

Education: Across the settlements, additional classrooms are needed in order to reduce congestion. Existing classrooms require repair and upgrade.

Food security and nutrition: A multi-sectoral response is required to address rising malnutrition rates in the settlements.

Health: Inadequate medical supplies, including drugs, medical equipment and administrative materials, remains a challenge throughout the settlements.

Financial Information

UNHCR is very grateful for the financial support provided by donors who have contributed to their activities with unearmarked and broadly earmarked funds as well as for those who have contributed directly to the operation.

Donors who have contributed to the operation:

- | | |
|---|---------------------------------------|
| ■ United States of America | ■ Country-Based Pooled Funds |
| ■ Germany | ■ Private Donors Switzerland |
| ■ European Union | ■ Private Donors Australia |
| ■ Japan | ■ France |
| ■ CERF | ■ Bill & Melinda Gates Foundation |
| ■ United Kingdom | ■ African Union |
| ■ Denmark | ■ International Olympic Committee |
| ■ Norway | ■ U.N. Foundation (UNFIP) |
| ■ Australia | ■ Private Donors Spain |
| ■ Sweden | ■ Private Donors Japan |
| ■ Finland | ■ Private Donors Canada |
| ■ Educate a Child Programme | ■ Private Donors Sweden |
| ■ UNIQLO Co. Ltd | ■ Private Donors China |
| ■ Ireland | ■ Private Donors Italy |
| ■ Private Donors Germany | ■ Private Donors United Kingdom |
| ■ Canada | ■ Private Donors United Arab Emirates |
| ■ Belgium | ■ Private Donors Brazil |
| ■ IKEA Foundation | ■ Private Donors Austria |
| ■ Luxembourg | ■ Private Donors USA |
| ■ Church of Jesus Christ of Latter-Day Saints | |

Funding (in million USD)

A total of **210.8 million** has been funded as of 24 July 2017

External / Donors Relations

Special thanks to the major donors of unrestricted and regional funds in 2017

United States of America (95 M) | Sweden (76 M) | Netherlands (52 M) | Norway (41 M) | Private Donors Spain (29 M) | Japan (25 M) | Denmark (23 M) | Australia (19 M) | Canada (16 M) | Switzerland (15 M) | Private Donors Republic of Korea (15 M) | France (14 M) | Germany (12 M) | Italy (10 M)

Thanks to other donors of unrestricted and regional funds in 2018

Algeria | Austria | Belgium | Bosnia and Herzegovina | Chile | Costa Rica | Estonia | Finland | Iceland | Indonesia | Ireland | Kuwait | Lithuania | Luxembourg | Malta | Mexico | Monaco | Morocco | New Zealand | Qatar | Republic of Korea | Singapore | Sri Lanka | Thailand | Turkey | United Arab Emirates | Uruguay | Zambia | Private Donors

CONTACTS

Laura Swanson, Associate Information Management Officer (Reporting), Nairobi
swanson@unhcr.org, Tel: +254 20 422 2205, Cell +254 729 806 149

Wendy Rappeport, Senior External Relations Officer, Geneva
rappepor@unhcr.org, Tel: +41 (0) 22 739 8993, Cell +41 (0) 79 881 91 83

LINKS

Regional Data Portal: <http://data.unhcr.org/SouthSudan/regional.php>

UNHCR South Sudan Situation page: <http://reporting.unhcr.org/node/20>

Recent News Story: <http://www.unhcr.org/news/latest/2017/6/594d3c744/unhcr-chief-praises-ugandas-commitment-refugees.html>