

# South Sudan - Refugees Statistics

as of 31 August 2017

## KEY FIGURES

**276,900**  
total refugee population

**99%**  
Living in camps and settlements

**272,942**

**82%**

Are Women and Children

**65,658**  
Households

**1%**  
Living in urban areas

**3,958**

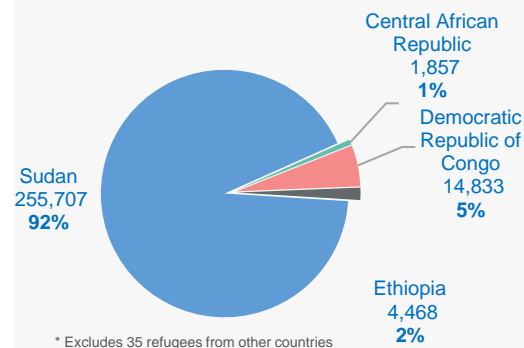
**52%**

Are female

## Age and gender breakdowns

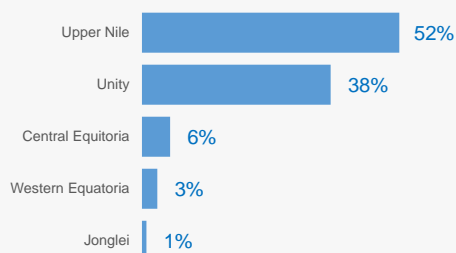


## Main countries of origin\*



\* Excludes 35 refugees from other countries

## States hosting refugees

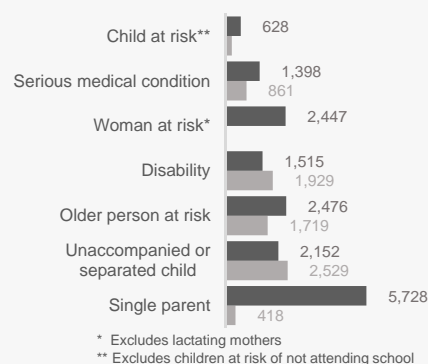


## Our Partners

AAHI, ADRA, AHA, ACROSS, ACTED, CARE, CRA, DNPI, DRC, HDC, HI, IMC, INTERSOS, IRC, LWF, Nile Hope, RI, SP, SCI, TOCH, UMCOR, UNOPS, UN, WAV, WDG and WVI.

Notes: In addition to 276,900 refugees, South Sudan hosts **2,400 asylum seekers** (Juba -2,313; Makpandu- 86; Mabani-1) and **1.89 million IDPs**.

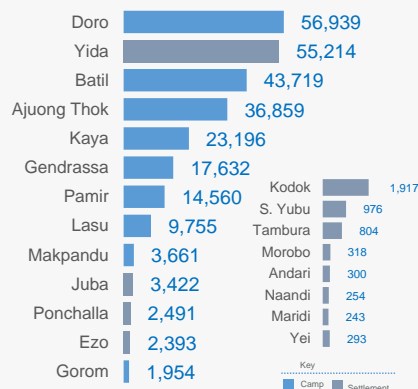
## Main Specific needs



\* Excludes lactating mothers

\*\* Excludes children at risk of not attending school

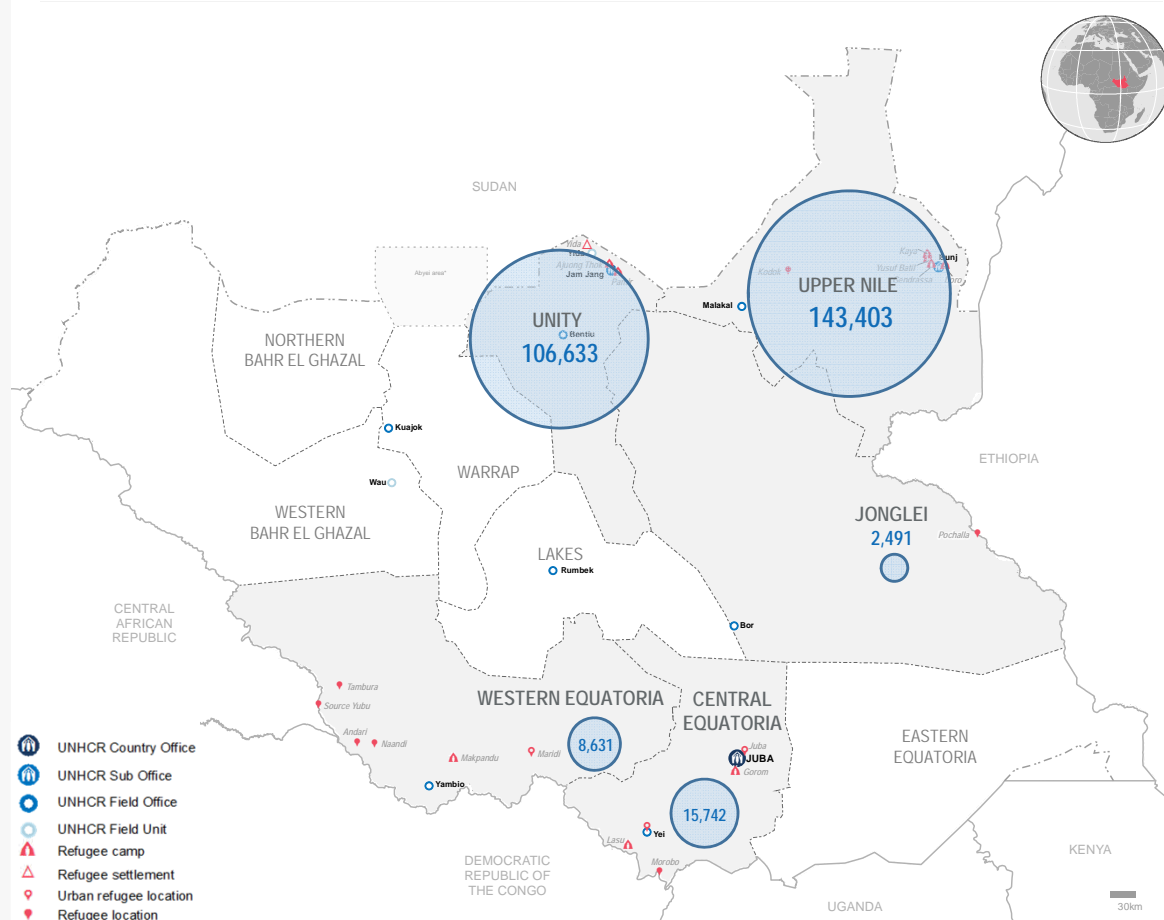
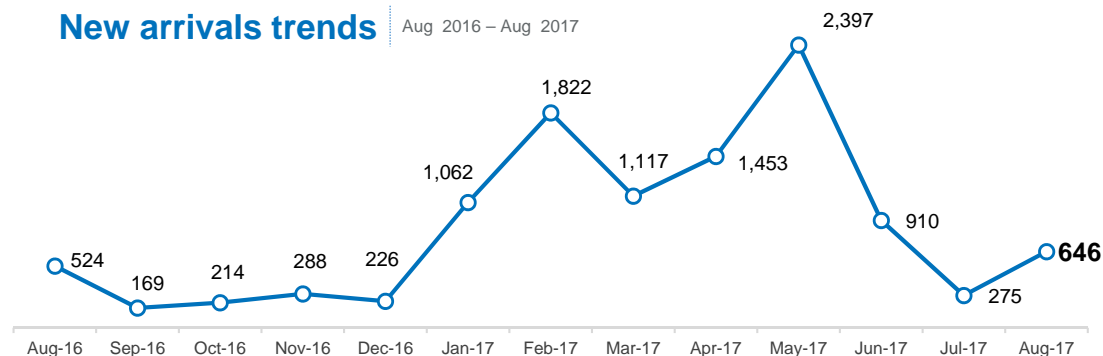
## Refugee locations



Key  
Camp Settlement

## New arrivals trends

Aug 2016 – Aug 2017



- UNHCR Country Office
- UNHCR Sub Office
- UNHCR Field Office
- UNHCR Field Unit
- Refugee camp
- Refugee settlement
- Urban refugee location
- Refugee location

South Sudan Refugee statistics: Population by Location, Sex and Age Group

as of the 31-August-2017



State	Location	0 - 4 years			5 - 11 years			12 - 17 years			18 - 59 years			60 years +			Total			Households		
		F	M	Total	F	M	Total	F	M	Total	F	M	Total	F	M	Total	F	M	Total	F	M	Total
Upper Nile	Doro	5,629	6,012	11,641	7,579	7,879	15,458	4,358	4,610	8,968	11,113	8,472	19,585	701	586	1,287	29,380	27,559	56,939	6,688	6,149	12,837
	Kaya	2,065	2,272	4,337	2,950	3,028	5,978	1,630	1,660	3,290	4,826	3,755	8,581	429	581	1,010	11,900	11,296	23,196	2,537	2,903	5,440
	Yusuf Batil	3,942	4,257	8,199	5,765	5,932	11,697	3,191	3,200	6,391	8,789	6,719	15,508	856	1,068	1,924	22,543	21,176	43,719	4,380	5,125	9,505
	Gendrassa	1,672	1,723	3,395	2,301	2,323	4,624	1,246	1,218	2,464	3,580	2,924	6,504	284	361	645	9,083	8,549	17,632	1,914	2,177	4,091
	Kodok	66	57	123	358	342	700	144	140	284	413	337	750	31	29	60	1,012	905	1,917	324	212	536
	Total	13,374	14,321	27,695	18,953	19,504	38,457	10,569	10,828	21,397	28,721	22,207	50,928	2,301	2,625	4,926	73,918	69,485	143,403	15,843	16,566	32,409
Unity	Ajounk Thok	3,668	3,607	7,275	4,448	4,424	8,872	2,791	3,240	6,031	7,182	6,981	14,163	296	222	518	18,385	18,474	36,859	4,808	3,998	8,806
	Pamir	1,684	1,732	3,416	1,897	1,948	3,845	1,102	1,191	2,293	2,893	1,866	4,759	150	97	247	7,726	6,834	14,560	2,416	1,023	3,439
	Yida	5,324	5,474	10,798	8,801	8,881	17,682	5,041	4,213	9,254	11,696	4,858	16,554	573	353	926	31,435	23,779	55,214	8,516	3,024	11,540
	Total	10,676	10,813	21,489	15,146	15,253	30,399	8,934	8,644	17,578	21,771	13,705	35,476	1,019	672	1,691	57,546	49,087	106,633	15,740	8,045	23,785
Central Equatoria	Gorom	173	165	338	221	230	451	132	151	283	414	433	847	27	8	35	967	987	1,954	330	401	731
	Juba	116	144	260	221	208	429	118	96	214	395	2,040	2,435	4	80	84	854	2,568	3,422	198	2,010	2,208
	Lasu	754	780	1,534	1,279	1,280	2,559	795	772	1,567	1,995	1,786	3,781	203	111	314	5,026	4,729	9,755	1,339	1,374	2,713
	Morobo	26	22	48	45	59	104	26	30	56	60	42	102	3	5	8	160	158	318	38	41	79
	Yei	26	31	57	28	29	57	21	21	42	67	67	134	2	1	3	144	149	293	65	58	123
	Total	1,095	1,142	2,237	1,794	1,806	3,600	1,092	1,070	2,162	2,931	4,368	7,299	239	205	444	7,151	8,591	15,742	1,970	3,884	5,854
Jonglei	Pochalla	132	160	292	279	274	553	332	364	696	654	248	902	36	12	48	1433	1058	2491	524	143	667
	Total	132	160	292	279	274	553	332	364	696	654	248	902	36	12	48	1,433	1,058	2,491	524	143	667
Western Equatoria	Andari	29	23	52	28	39	67	19	13	32	78	52	130	8	11	19	162	138	300	60	61	121
	Ezo	117	123	240	218	246	464	160	151	311	776	466	1,242	71	65	136	1,342	1,051	2,393	560	420	980
	Makpandu	316	317	633	493	421	914	235	253	488	788	729	1,517	54	55	109	1,886	1,775	3,661	468	626	1,094
	Maridi	4	7	11	40	33	73	20	20	40	52	66	118	0	1	1	116	127	243	40	58	98
	Naandi	23	19	42	33	33	66	15	20	35	49	49	98	7	6	13	127	127	254	39	44	83
	Source yubu	61	81	142	137	140	277	58	70	128	265	140	405	14	10	24	535	441	976	196	125	321
	Tambura	66	82	148	147	120	267	38	47	85	189	108	297	6	1	7	446	358	804	149	97	246
	Total	616	652	1,268	1,096	1,032	2,128	545	574	1,119	2,197	1,610	3,807	160	149	309	4,614	4,017	8,631	1,512	1,431	2,943
Grand total		25,893	27,088	52,981	37,268	37,869	75,137	21,472	21,480	42,952	56,274	42,138	98,412	3,755	3,663	7,418	144,662	132,238	276,900	35,589	30,069	65,658



as of the 31-August-2017

Country of Origin	Settlement	Households (HHs)			Persons																	
		Total HHs	Female headed		0 - 4 years			5 - 11 years			12 - 17 years			18 - 59 years			60 years +			Total		
			HHs	%	F	M	T	F	M	T	F	M	T	F	M	T	F	M	T	F	M	T
CENTRAL AFRICAN REPUBLIC	Andari	1	-	0%	0	0	0	0	0	0	0	0	0	0	1	1	0	0	0	0	1	1
	Ezo	14	8	57%	1	3	4	3	6	9	3	2	5	11	5	16	1	1	2	19	17	36
	Makpandu	34	6	18%	4	8	12	10	8	18	0	5	5	15	25	40	0	5	5	29	51	80
	Naandi	7	4	57%	0	4	4	2	3	5	0	0	0	5	3	8	0	0	0	7	10	17
	SourceYubu	309	188	61%	59	81	140	132	139	271	57	68	125	256	136	392	13	9	22	517	433	950
	Tambura	232	141	61%	62	78	140	144	118	262	38	46	84	180	102	282	4	1	5	428	345	773
	Total	597	347	58%	126	174	300	291	274	565	98	121	219	467	272	739	18	16	34	1,000	857	1,857
DEMOCRATIC REPUBLIC OF THE CONGO	Gorom	1	-	0%	1	1	2	-	1	1	-	-	-	-	-	-	-	1	1	1	3	4
	Andari	120	60	50%	29	23	52	28	39	67	19	13	32	78	51	129	8	11	19	162	137	299
	Ezo	966	552	57%	116	120	236	215	240	455	157	149	306	765	461	1,226	70	64	134	1,323	1,034	2,357
	Juba	1	-	0%	1	1	2	1	2	3	2	-	2	2	4	6	-	2	2	6	9	15
	Lasu	2,252	1,227	54%	652	680	1,332	1,050	1,041	2,091	650	626	1,276	1,812	1,351	3,163	202	102	304	4,366	3,800	8,166
	Makpandu	978	437	45%	282	272	554	426	357	783	197	221	418	699	589	1,288	54	49	103	1,658	1,488	3,146
	Morobo	79	38	48%	26	22	48	45	59	104	26	30	56	60	42	102	3	5	8	160	158	318
	Naandi	76	35	46%	23	15	38	31	30	61	15	20	35	44	46	90	7	6	13	120	117	237
	SourceYubu	12	8	67%	2	-	2	5	1	6	1	2	3	9	4	13	1	1	2	18	8	26
	Tambura	14	8	57%	4	4	8	3	2	5	-	1	1	9	6	15	2	-	2	18	13	31
	Yei	68	60	88%	26	31	57	27	28	55	21	18	39	62	18	80	2	1	3	138	96	234
	Total	4,567	2,425	53%	1,162	1,169	2,331	1,831	1,800	3,631	1,088	1,080	2,168	3,540	2,572	6,112	349	242	591	7,970	6,863	14,833
ETHIOPIA	Doro	1	1	0%	-	-	-	-	-	-	-	-	-	1	-	1	-	-	-	1	-	1
	Gorom	730	330	45%	172	164	336	221	229	450	132	151	283	414	433	847	27	7	34	966	984	1,950
	Juba	-	-	0%	-	-	-	-	1	1	-	-	-	6	12	18	-	-	-	6	13	19
	Makpandu*	-	-	0%	2	-	2	-	-	-	-	-	-	2	3	5	-	-	-	4	3	7
	Pochalla	667	524	79%	132	160	292	279	274	553	332	364	696	654	248	902	36	12	48	FALSE	1,058	2,491
	Total	1,398	855	61%	306	324	630	500	504	1,004	464	515	979	1,077	696	1,773	63	19	82	977	2,058	4,468
SUDAN	Ajuong Thok	8,806	4,808	55%	3,668	3,607	7,275	4,448	4,424	8,872	2,791	3,240	6,031	7,182	6,981	14,163	296	222	518	18,385	18,474	36,859
	Batil	9,505	4,380	46%	3,942	4,257	8,199	5,765	5,932	11,697	3,191	3,200	6,391	8,789	6,719	15,508	856	1,068	1,924	22,543	21,176	43,719
	Doro	12,836	6,687	52%	5,629	6,012	11,641	7,579	7,879	15,458	4,358	4,610	8,968	11,111	8,472	19,583	701	586	1,287	29,378	27,559	56,937
	Gendrassa	4,091	1,914	47%	1,672	1,723	3,395	2,301	2,323	4,624	1,246	1,218	2,464	3,580	2,924	6,504	284	361	645	9,083	8,549	17,632
	Juba	2,202	198	9%	115	141	256	220	204	424	116	96	212	384	1,999	2,383	4	77	81	839	2,517	3,356
	Kaya	5,440	2,537	47%	2,065	2,272	4,337	2,950	3,028	5,978	1,630	1,660	3,290	4,826	3,755	8,581	429	581	1,010	11,900	11,296	23,196
	Kodok	536	324	60%	66	57	123	358	342	700	144	140	284	413	337	750	31	29	60	1,012	905	1,917
	Lasu	461	112	24%	102	100	202	229	239	468	145	146	291	183	435	618	1	9	10	660	929	1,589
	Makpandu	82	25	30%	28	37	65	57	56	113	38	27	65	72	111	183	-	1	1	195	232	427
	Maridi	98	40	41%	4	7	11	40	33	73	20	20	40	52	66	118	-	1	1	116	127	243
	Pamir	3,439	2,416	70%	1,684	1,732	3,416	1,897	1,948	3,845	1,102	1,191	2,293	2,893	1,866	4,759	150	97	247	7,726	6,834	14,560
	Yei	55	5	9%	-	-	-	1	1	2	-	2	2	5	49	54	-	-	-	6	52	58
	Yida	11,540	8,516	74%	5,324	5,474	10,798	8,801	8,881	17,682	5,041	4,213	9,254	11,696	4,858	16,554	573	353	926	31,435	23,779	55,214
	Total	59,091	31,962	54%	24,299	25,419	49,718	34,646	35,290	69,936	19,822	19,763	39,585	51,186	38,572	89,758	3,325	3,385	6,710	133,278	122,429	255,707
Others*	Others*	5	-	0%	-	2	2	-	1	1	-	1	1	4	26	30	-	1	1	4	31	35
	Total	5	-	0%	-	2	2	-	1	1	-	1	1	4	26	30	-	1	1	4	31	35
Grand Total		65,658	35,589	54%	25,893	27,088	52,981	37,268	37,869	75,137	21,472	21,480	42,952	56,274	42,138	98,412	3,755	3,663	7,418	143,229	132,238	276,900

\* Refers to refugees from Uganda, Somalia, Eritrea, Syria, Burundi and Egypt spread in Gorom, Lasu, Juba, Makpandu and Doro.

Asylum Seekers Population by Country of Origin, Sex and Age Group in South Sudan

as of the 31-August-2017



Country of Origin	Location	Principal Applicants			Persons																	
		Total Cases	Female headed		0 - 4 years			5 - 11 years			12 - 17 years			18 - 59 years			60 years +			Total		
			Cases	%	F	M	T	F	M	T	F	M	T	F	M	T	F	M	T	F	M	T
BURUNDI	Juba	432	-	0%	14	10	24	4	3	7	3	3	6	29	429	457	0	0	0	50	445	495
	Total	432	-	0%	14	10	24	4	3	7	3	3	6	29	429	457	-	-	-	50	445	495
DEMOCRATIC REPUBLIC OF THE CONGO	Juba	1	1	100%	-	-	-	-	-	-	-	-	-	1	-	1	-	-	-	1	-	1
	Total	1	1	1	-	-	-	-	-	-	-	-	-	1	-	1	-	-	-	1	-	1
ERITREA	Juba	984	180	18%	67	68	135	15	17	32	1	4	5	323	799	1,122	-	26	26	406	914	1,320
	Makpandu	35	7	20%	7	6	13	2	4	6	-	-	-	16	28	44	-	2	2	25	40	65
	Total	1,019	187	18%	74	74	148	17	21	38	1	4	5	339	827	1,166	-	28	28	431	954	1,385
ETHIOPIA	Maban	1	-	0%	-	-	-	-	-	-	-	-	-	-	1	1	-	-	-	-	1	1
	Juba	218	41	19%	19	16	35	2	4	6	2	-	2	93	181	274	-	-	-	116	201	317
	Makpandu	10	1	10%	-	2	2	2	1	3	-	-	-	4	10	14	-	-	-	6	13	19
	Total	229	42	18%	19	18	37	4	5	9	2	-	2	97	192	289	-	-	-	122	215	337
KENYA	Juba	2	1	50%	-	-	-	-	-	-	-	-	-	1	1	2	-	-	-	1	1	2
	Makpandu	-	-	0%	-	-	-	-	-	-	-	-	-	-	-	-	-	1	1	-	1	1
	Total	2	1	50%	-	-	-	-	-	-	-	-	-	1	1	2	-	1	1	1	2	3
SOMALIA	Juba	143	20	14%	-	5	5	1	1	2	-	-	-	27	126	153	-	1	1	28	133	161
	Makpandu	-	-	0%	-	-	-	-	-	-	-	-	-	-	1	1	-	-	-	-	1	1
	Total	143	20	14%	-	5	5	1	1	2	-	-	-	27	127	154	-	1	1	28	134	162
SUDAN SYRIA UGANDA	Juba	14	-	0%	-	-	-	-	-	-	-	-	-	-	14	14	-	1	1	-	15	15
	Juba	1	-	0%	-	-	-	-	-	-	-	-	-	-	1	1	-	-	-	-	1	1
	Juba	1	-	0%	-	-	-	-	-	-	-	-	-	-	1	1	-	-	-	-	1	1
	Total	16	-	0%	-	-	-	-	-	-	-	-	-	-	16	16	-	1	1	-	17	17
Grand Total		1,842	251	14%	107	107	214	26	30	56	6	7	13	494	1,592	2,085	-	31	31	633	1,767	2,400