



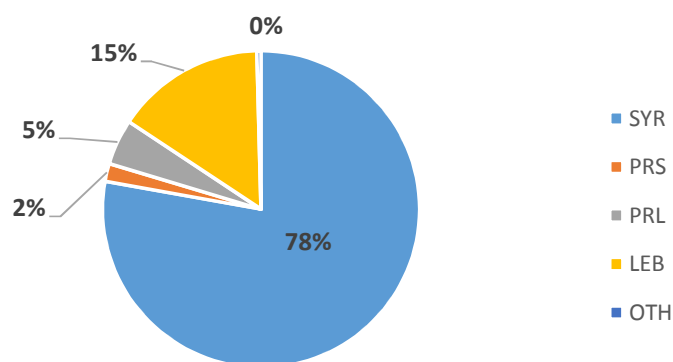
OUTCOME 5: Boys & girls at risk and survivors of violence, exploitation and abuse have access to an improved and equitable prevention & response

Output 5.2: Displaced and host community boys & girls at risk or survivors of violence have access to an integrated package of quality prevention and response services

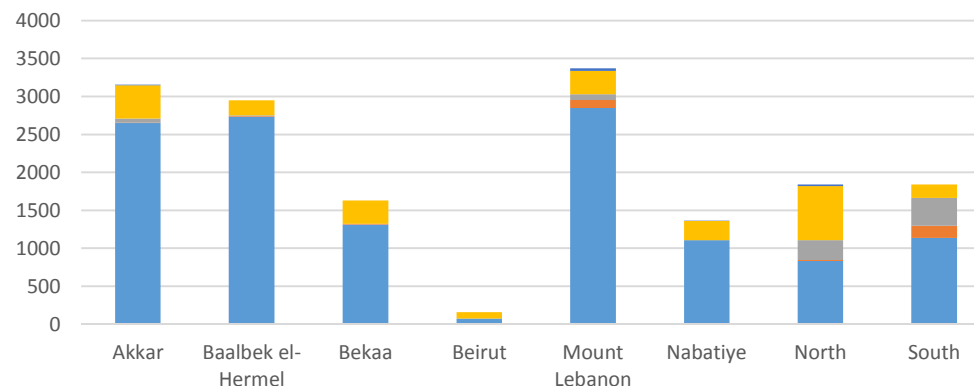
Funding agencies: UNICEF, UNHCR, OCHA, independent sources.

Information management: Vicken Ashkarian, vashkarian@unicef.org

Indicator 5.2.2: # of boys & girls accessing CP & focused PSS



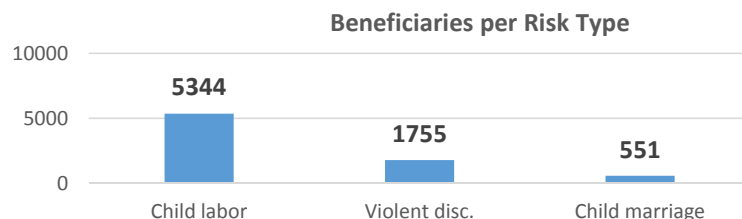
Disaggregations		
Cohorts	Sex	Risk type
16310	16259	7650



Aggregated per sex		Aggregated per age groups*		
Male	Female	0 - 5	6 - 11	12 - 17
53.7%	46.3%	0.2%	60.1%	39.7%

* Disaggregation by age excludes data from UNICEF Pal. Prog.

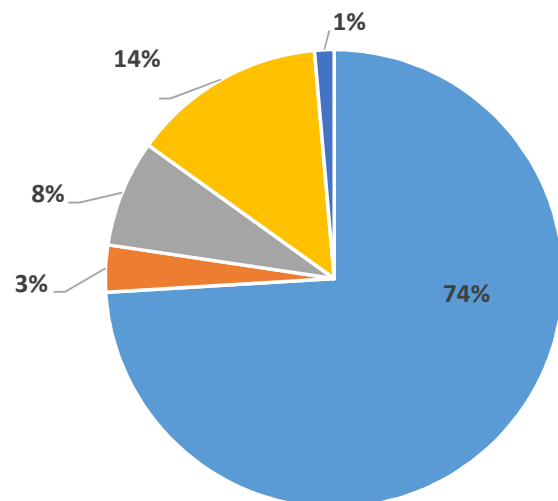
Governorates							
Akkar	B/H	Bekaa	Beirut	ML	Nab	Nt	St
3155	2948	1630	158	3373	1365	1839	1842



Partners:

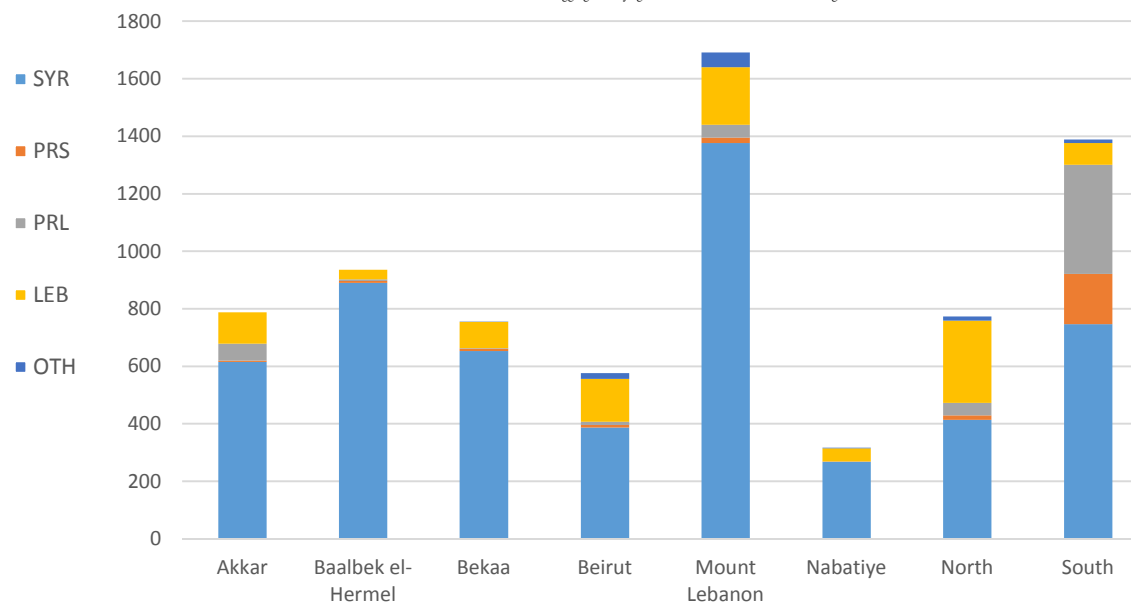
DRC, DRC/LRC, HDA, Himaya, Intersos, IR, IRC, KAFA, Makhzoumi Foundation, MAP, Mercy Corps, Mouvement Social, SaJ, SCI, TdH - It, TdH - L, WCH, WVI, YNCA.

Indicator 5.2.3: # of boys & girls assisted through CP case management services



Disaggregations			
Cohorts	Sex	Age*	Risk type
7225	7201	6391	5651

* Disaggregation by age excludes data from UNICEF Pal. Prog.



Aggregated per sex		Aggregated per age groups*		
Male	Female	0 - 5	6 - 11	12 - 17
59.8%	40.2%	11.5%	37.7%	50.9%

* Disaggregation by age excludes data from UNICEF Pal. Prog.

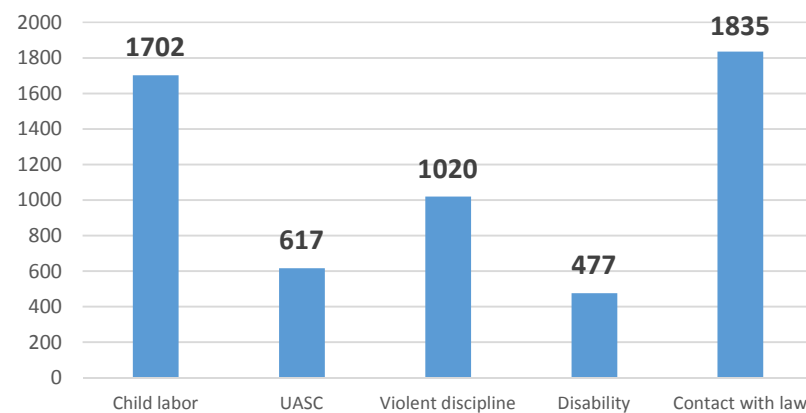
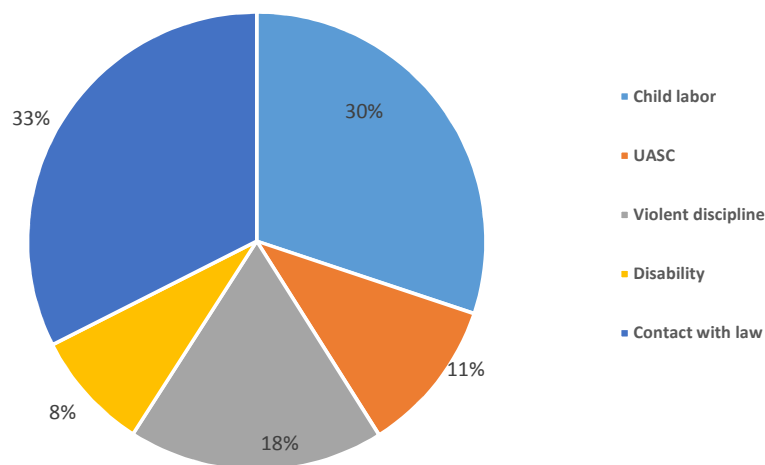
Governorates							
Akkar	B/H	Bekaa	Beirut	ML	Nab	Nt	St
788	936	755	576	1691	317	773	1389

Partners:

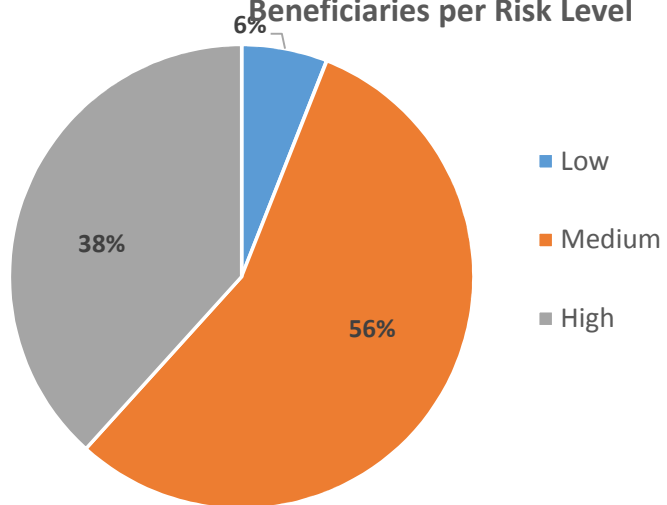
BZRD, DRC, Himaya, Intersos, IRC, KAFA, Makhzoumi Foundation, MAP, Mercy Corps, Mouvement Social, SCI, TdH - It, TdH - L, WCH, UNRWA.

Indicator 5.2.3: # of boys & girls assisted through CP case management services

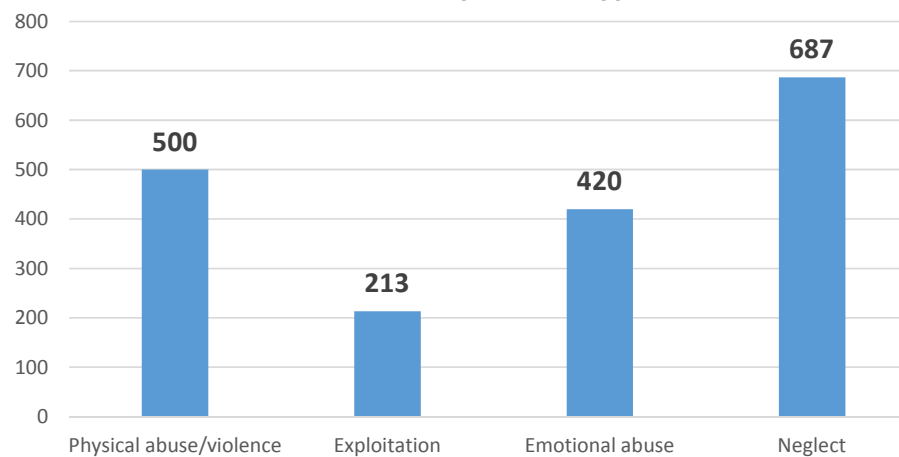
Beneficiaries per Vulnerability



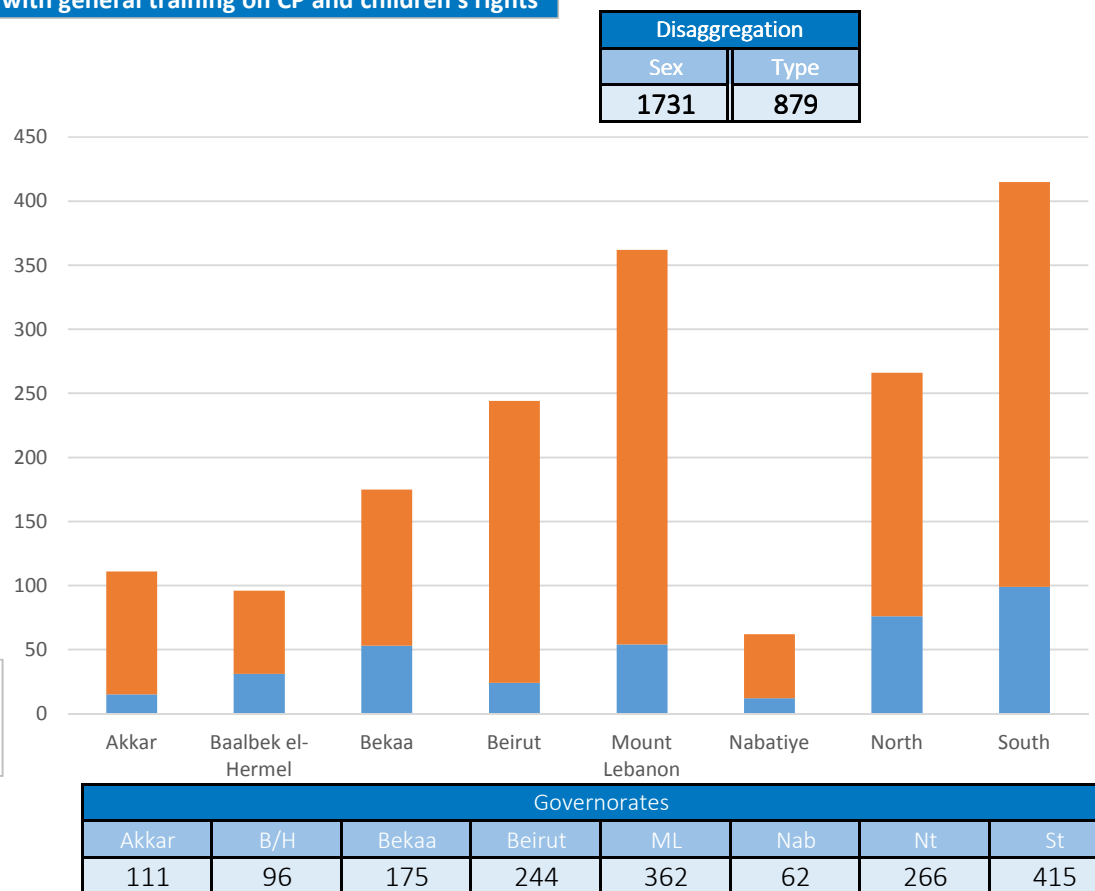
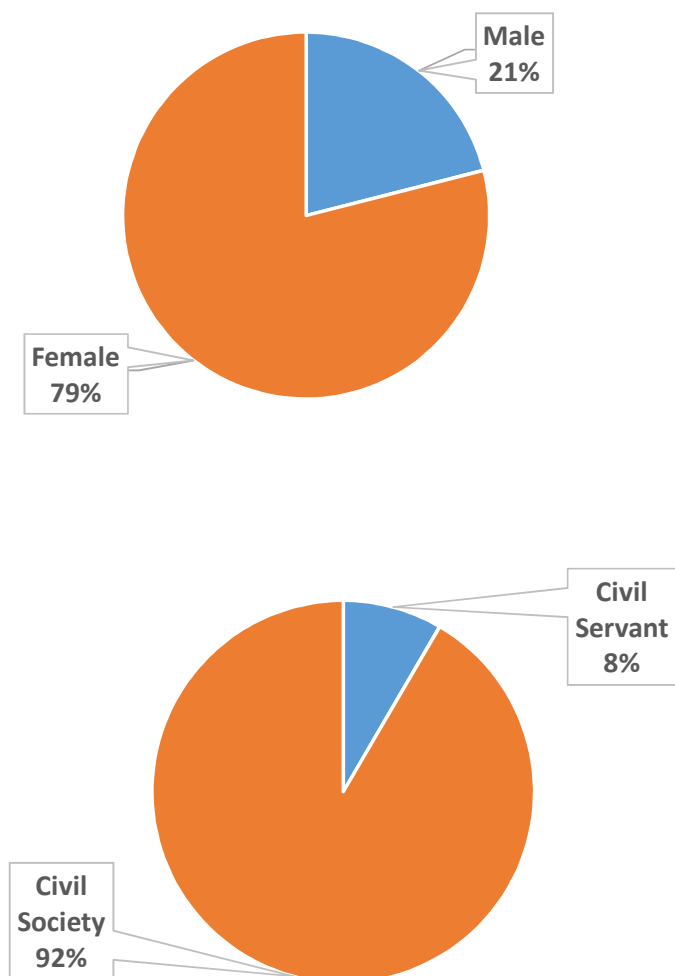
Beneficiaries per Risk Level



Beneficiaries per Risk Type



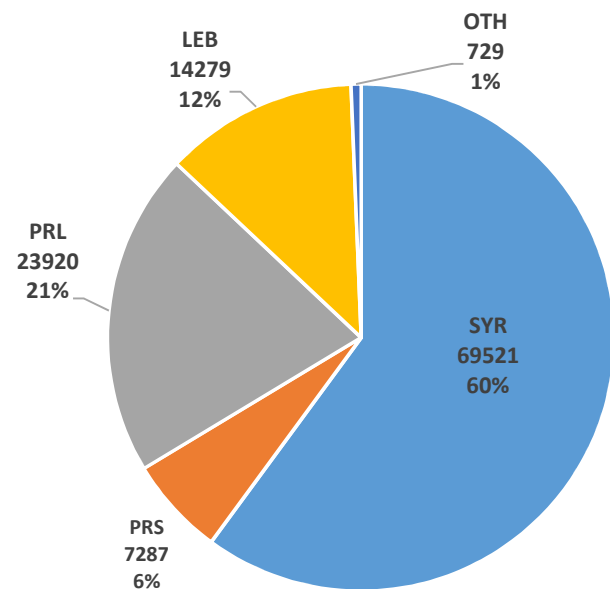
Indicator 5.2.4: # of partners and government staff provided with general training on CP and children's rights



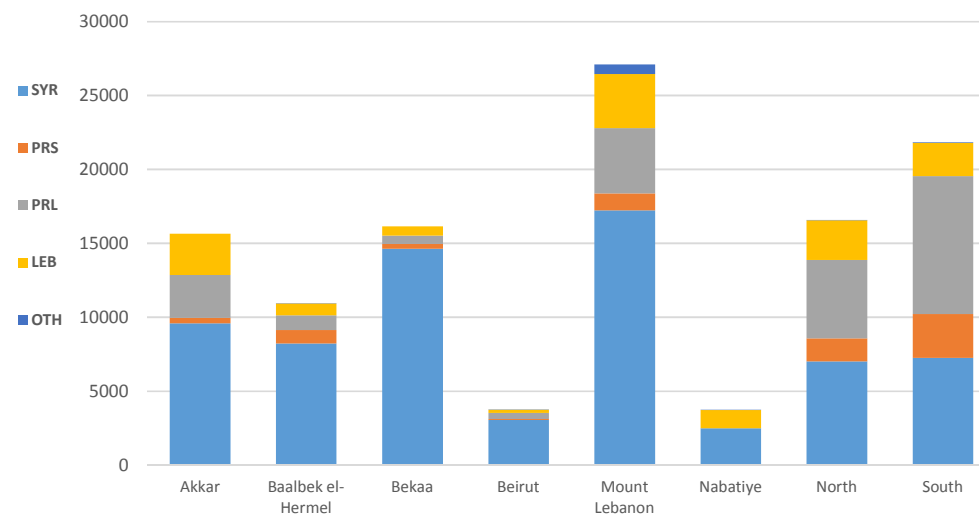
Partners:
DRC, DRC/LRC, Intersos, IRC, KAFA, Makhzoumi Foundation, Mercy Corps, Mouvement Social, RtP, SCI, TdH - It, TdH - L, WCH, WVI.

Output 5.3: Vulnerable children, families and communities supported to promote practices that protect them.

Indicator 5.3.2: # of boys & girls accessing CP prevention (for boys & girls: community based PSS)



Disaggregations	
Cohorts	Sex
115736	115006



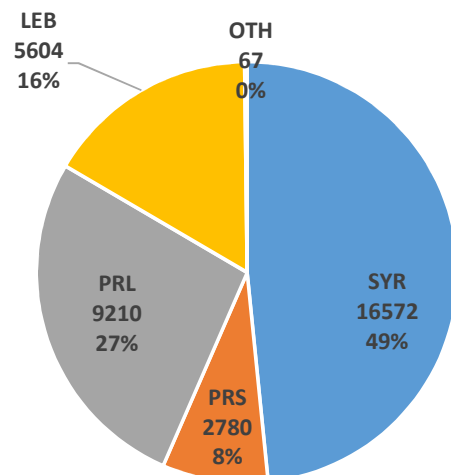
Aggregated per sex		Aggregated per age groups*		
Male	Female	0 - 5	6 - 11	12 - 17
49.1%	50.9%	6.4%	72.1%	21.5%

* Disaggregation by age excludes data from UNICEF Pal. Prog.

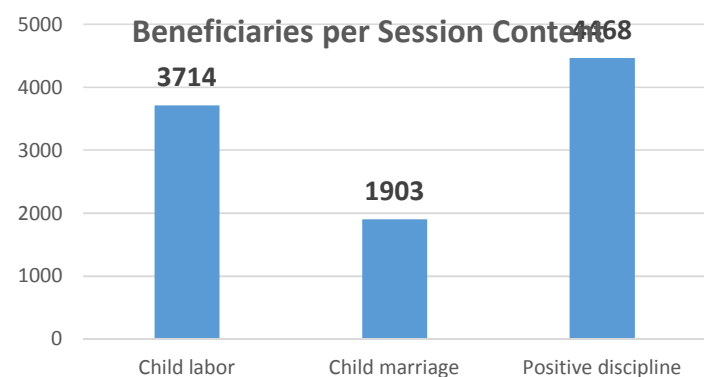
Governorates							
Akkar	B/H	Bekaa	Beirut	ML	Nab	Nt	St
15659	10935	16148	3746	27109	3721	16580	21838

Partners: AMEL, ARCPA/AI-Jana, Beyond, BZRD, DRC, DRC/LRC, HDA, Himaya, Intersos, IR, IRC, KAFA, Makhzoumi Foundation, MAP, Mercy Corps, RtP, SaJ, SCI, SIF, TdH - It, TdH - L, WCH, WVI, YNCA .

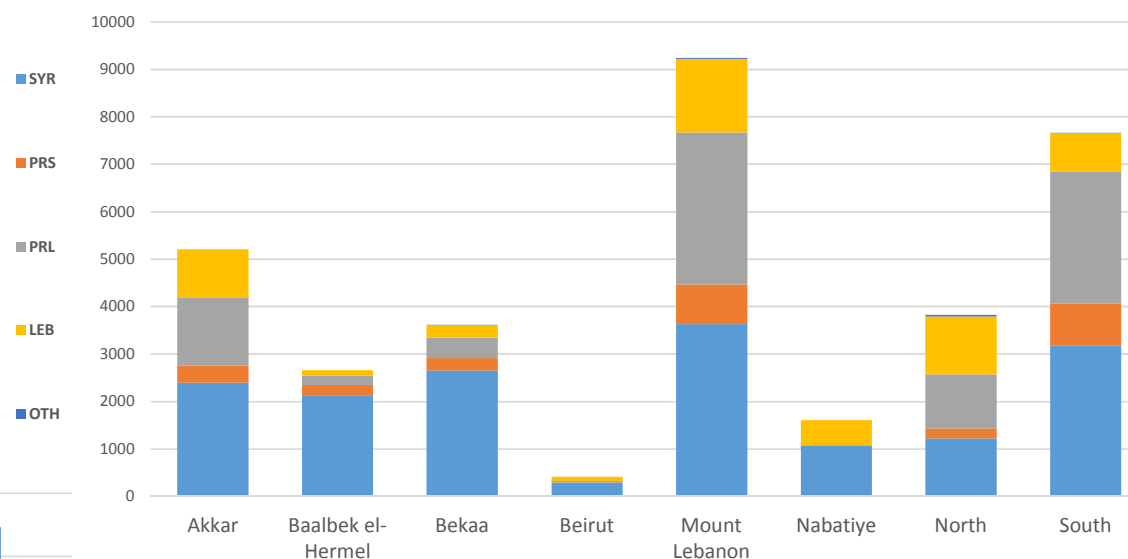
Indicator 5.3.3: # of caregivers accessing CP prevention (caregivers' programs)



Activities per sex	
Male	Female
10.4%	89.6%



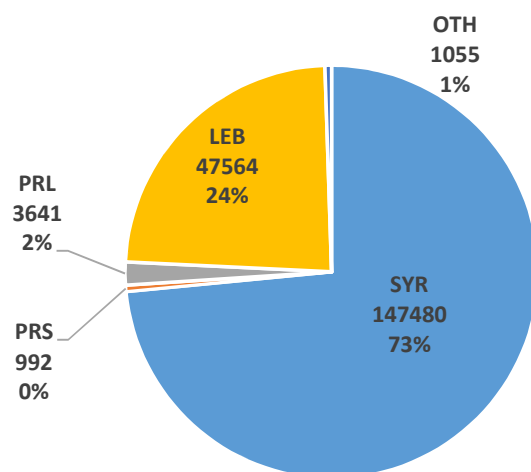
Disaggregations	
Cohorts	Sex
34233	34216



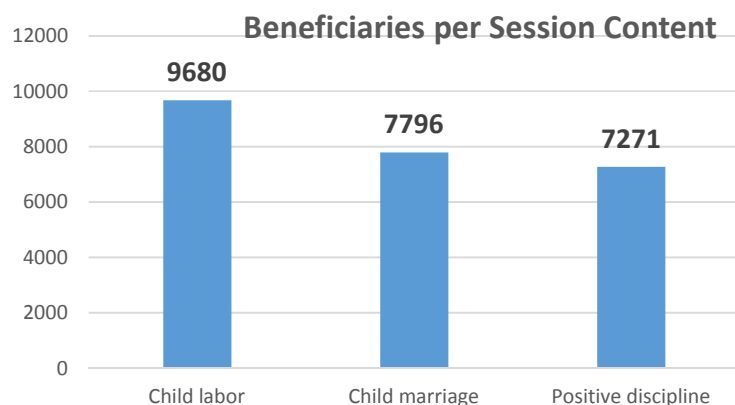
Governorates							
Akkar	B/H	Bekaa	Beirut	ML	Nab	Nt	St
5210	2656	3612	409	9245	1608	3827	7666

Partners: AMEL, ARCPA/AI-Jana, BZRD, Dorcas, DRC, DRC/LRC, HDA, Himaya, Intersos, IR, IRC, KAFA, MAP, Makhzoumi Foundation, Mercy Corps, Mouvement Social, SaJ, SCI, SIF, TdH - It, TdH - L, WCH, WVI, YNCA.

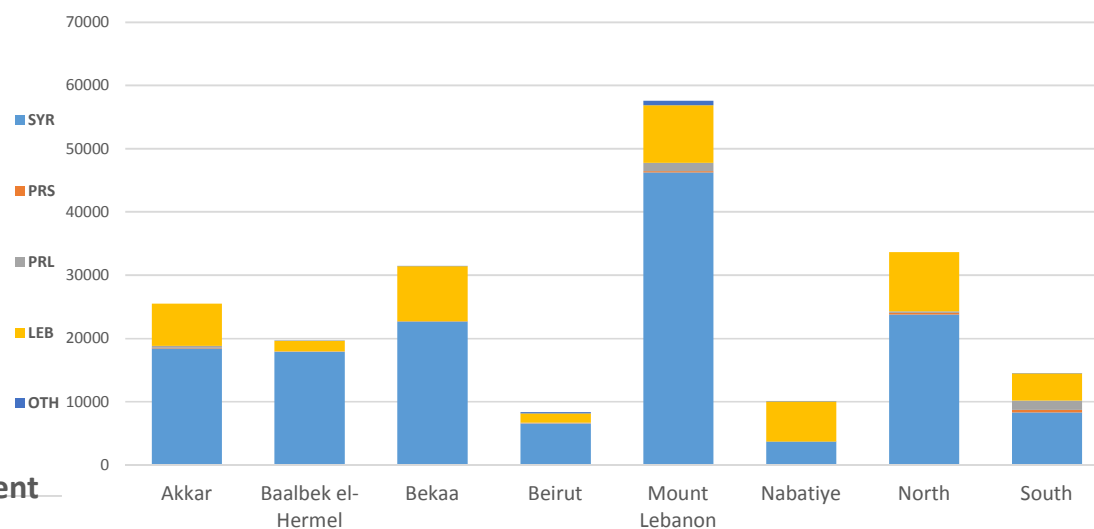
Indicator 5.3.4: # of girls & boys reached on key CP issues



Activities per sex	
Male	Female
50.5%	49.5%



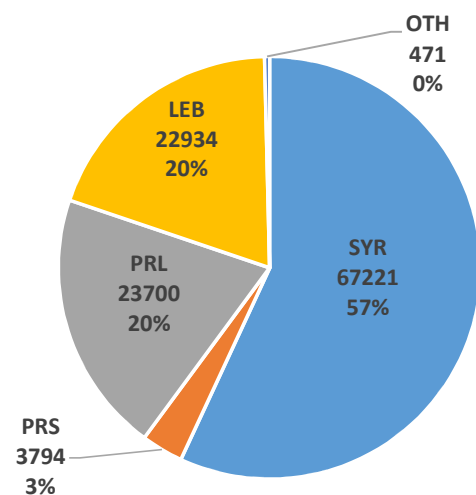
Disaggregations		
Cohorts	Sex	Age
200732	198333	173018



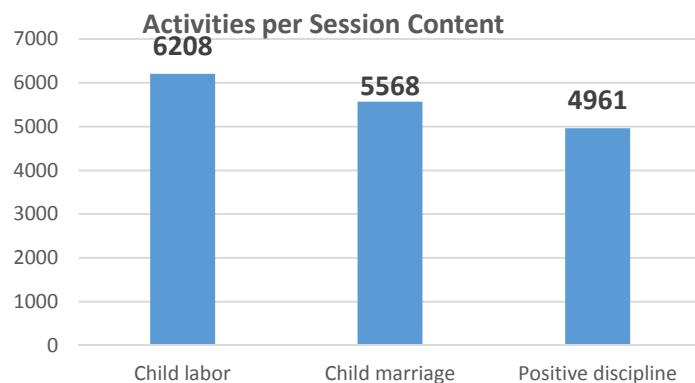
Governorates							
Akkar	B/H	Bekaa	Beirut	ML	Nab	Nt	St
25493	19649	31480	8368	57578	10028	33631	14505

Partners: AMEL, Dorcas, DRC, DRC/LRC, Himaya, Intersos, IRC, KAFA, Makhzoumi Foundation, Mercy Corps, RtP, Saj, SCI, SIF, TdH - It, TdH - L, WCH, WVI, YNCA.

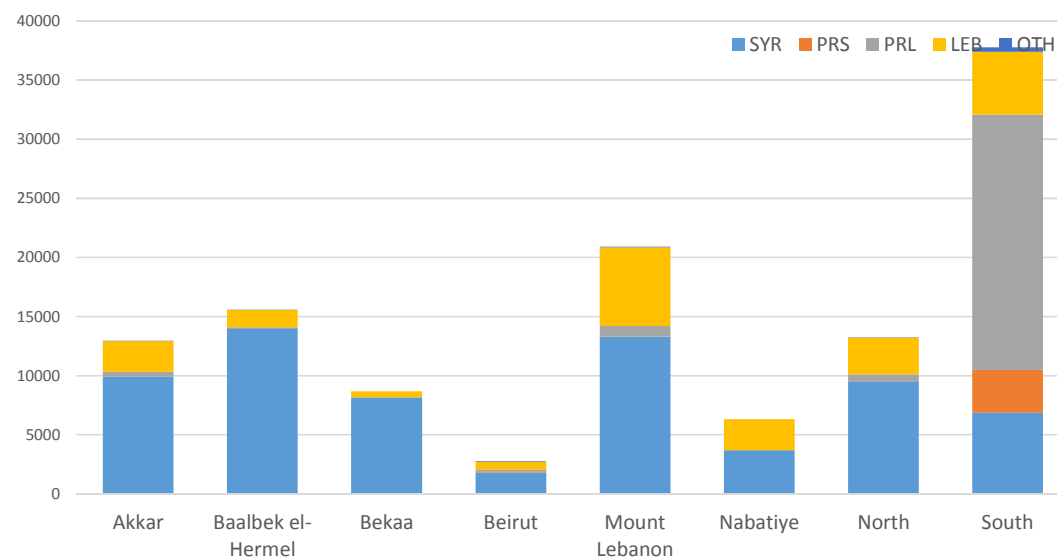
Indicator 5.3.5: # of caregivers reached on key CP issues.



Activities per sex	
Male	Female
42.0%	58.0%



Disaggregations	
Cohorts	Sex
118120	117827



Governorates							
Akkar	B/H	Bekaa	Beirut	ML	Nab	Nt	St
12906	15554	8687	2793	20891	6322	13202	37765

Partners: AMEL, BZRD, DRC, DRC/LRC, Himaya, Intersos, IRC, KAFA, Makhzoumi Foundation, Mercy Corps, Mouvement Social, RtP, SaJ, SCI, SIF, TdH - It, TdH - L, WCH, WVI, YNCA.



OUTCOME 5: Boys & girls at risk and survivors of violence, exploitation and abuse have access to an improved and equitable prevention & response

**Child Protection - All activities
Progress to target**

