

Angola

19 September 2017

There are currently **2,313 refugees living in Lóvuá settlement**, this represents seven per cent of the overall refugee population from the DRC in northern Angola.

2,984 children, attended the **child friendly spaces available in Cacanda and Lóvuá** during the last week.

Lack of funding will soon start to affect interventions, such as, treatment for children with moderate acute malnutrition and the water supply system.

KEY FIGURES

76%

Of Congolese refugees in Angola are women and children

31,370

Biometrically registered Congolese refugees in Dundo area (15 September 2017)

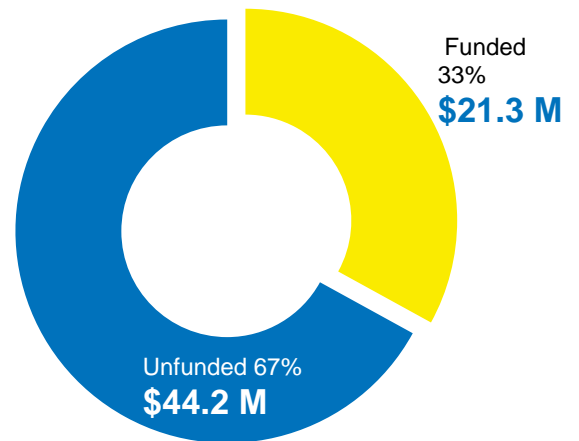
50,000

Inter-agency planning figure for Congolese refugees from the Kasai region in northern Angola by the end of the year

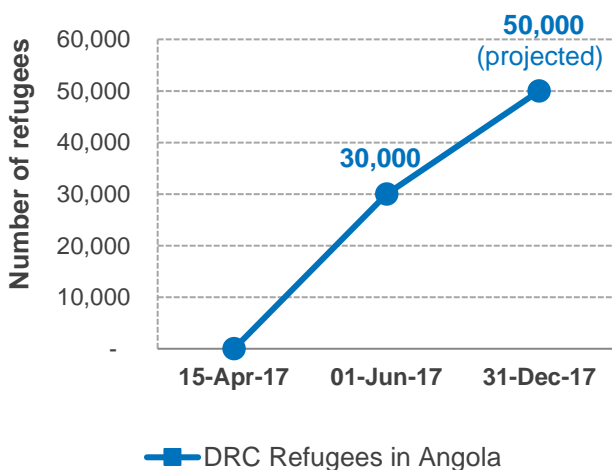
FUNDING (AS OF 19 SEPTEMBER)

USD 65,507,610

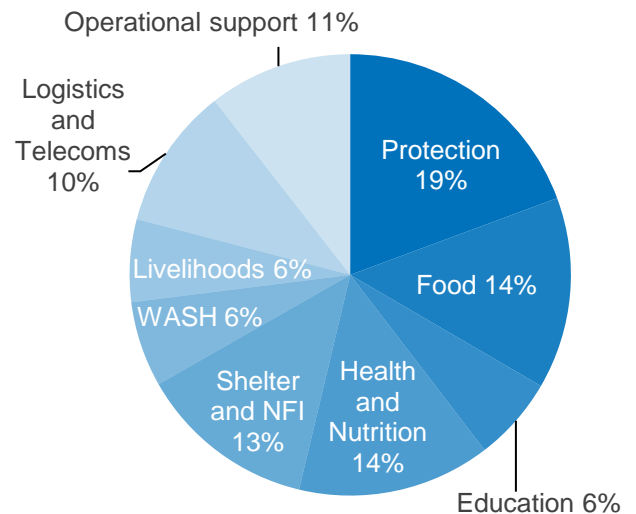
requested for Angola Inter-agency Refugee Response

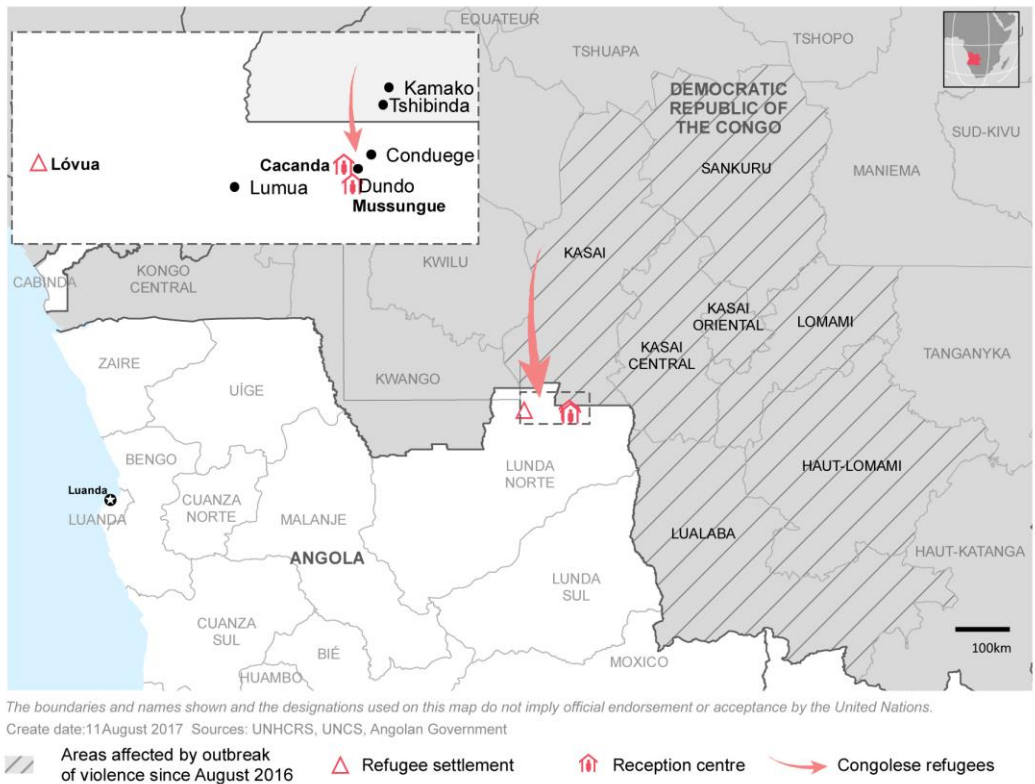


POPULATION TRENDS



FINANCIAL REQUIREMENTS





Operational Context

Violence and ethnic tensions, in the Kasai region of the Democratic Republic of the Congo (DRC), triggered the internal displacement of some 1.4 million persons, and has forced over 31,000 Congolese to seek safety in Angola’s Lunda Norte Province. Seventy-six per cent of the registered refugees are women and children.

The conflict continues and refugees report incidents of indiscriminate violence, sexual and human rights abuses, and a shortage of basic items. The number of newly arrived refugees has decreased significantly since early July. According to recently arrived refugees, access to border areas through the main roads is limited. As the security situation remains fluid in the Kasai region, humanitarian organizations are preparing to provide protection and assistance for up to 50,000 Congolese refugees, who may seek asylum in Angola by the end of 2017. The interagency humanitarian response, for the current population of 31,370 Congolese refugees, covers the areas of protection, emergency shelter, food and nutrition, non-food items, water, sanitation, hygiene, health and emergency education, until the end of 2017.

The DRC-Angola border serves as a main artery for trade between the two countries. While the border is closed to trade and commerce, the Government of Angola (GoA) has maintained an open door policy to welcome Congolese nationals fleeing as a result of the civil unrest.

On 8 August, the voluntary relocation of refugees, from Mussungue reception centre to Lóvua settlement, some 100 kilometers west from Dundo, begun. Mussungue reception centre is now closed. Relocation of refugees from Cacanda reception centre commenced on 31 August and is ongoing. The current refugee population in Lóvua settlement stands at 2,313, or seven per cent of the Congolese refugee population in northern Angola. A further 6,571 refugees continue to live in Cacanda, pending further relocation to Lóvua. The settlement has a total planned capacity for approximately 30,000 refugees, and it is expected to respond to the needs of all refugees living in Lunda Norte, and it can be further expanded in order to accommodate the 2017 year-end planning figure of 50,000.

The lack of heavy machinery to open primary and secondary roads in Lóvua continues to be one of the biggest challenges faced, hampering the site development and installation of basic facilities to receive refugees. Furthermore, in two weeks' time there will be no tents available to distribute to newly relocated refugees, causing serious constraints in future relocation exercises.

The slow pace of relocation to Lóvua, poses challenges to the protection response, both in Cacanda and Lóvua, by stretching the existing capacity of protection actors and preventing optimal use of resources for more durable response mechanisms.



A refugee child living in Cacanda reception centre, awaiting relocation to Lóvua settlement in northern Angola, 16 September 2017. © UNHCR / Rui Padilha

Achievements



PROTECTION

Achievements and Impact

- **Registration:** As of 15 September, the total number of biometrically registered refugees from the Democratic Republic of Congo is 31,370 consisting of 8,121 households. Total of 2,313 refugees live in Lóvua, 6,571 in Cacanda and the remaining in Dundo urban area. The increase in the population figures is explained by the continuous registration of new births and family reunification of nuclear family members.
- **Birth registration:** Total of 17 children were registered in Cacanda reception centre. Preparations are underway to start birth registration in Lóvua settlement.
- **Relocation:** On 14 September, a convoy facilitating the voluntary relocation of refugees, from Cacanda to Lóvua, took place with the transfer of 294 refugees (85 households), to village 5B. In this week's convoy, ten households were identified with specific needs, including three separated children, two adults with physical disability and one unaccompanied elderly person.
- **Child protection:** Currently 2,984 children in Cacanda and Lóvua are being cared for in three available child friendly spaces (CFS).
- A working group was created for the relocation of the 32 unaccompanied and separated children (UASC), from Cacanda to Lóvua, and endorsed a plan to relocate the children on the first week of October. The principle remains to quickly identify foster care arrangements in Lóvua. Meanwhile, the children will remain in a temporary child-friendly space in village 1A.
- Protection partners received training on child protection case management, furthermore a training was held at the Pedagogic Faculty of Dundo, in Lunda Norte on protection of child rights in the context of emergency. Total of 186 people attended this training, namely military and paramilitary personnel, justice system staff, and protection partners.
- **Sexual and gender based violence (SGBV):** Nine SGBV cases and incidents were recorded during this week in Lóvua and Cacanda. Among them, three cases of physical assault, three cases of forced marriage, one case of sexual assault, one case of denial of opportunities/services and one case of psychological violence. The majority of the survivors were female (eight females and one male) and children (six children and three adults). All the survivors had access to psychosocial support and legal counselling, three cases of physical assault had access to medical response. One case decided to bring the issue to the Police and the two forced marriages involving children were referred for a best interest assessment.
- **Border monitoring:** Monitoring activities were suspended during the reporting period. Access was not granted to the border points of Nordeste and Itanda allegedly, due to deteriorating security situation on the other side of the border. Coordination with

Migration authorities and protection partners in Kinshasa continues, in regards to returns to Kasai.

- **Communicating with Communities (CwC):** Two radios in Cacanda and in Lóvua continue to disseminate messages on child protection, birth registration, breast feeding, water management and storage and prevention of open defecation.
- **Helpdesk:** In Lóvua, some 30 individuals approached protection helpdesk, an increase in numbers that reveals the helpdesk is a community reference point in the settlement. Most queries relate to family reunification, differences among neighbours and registration issues.
- **Coordination:** GoA and protection partners have agreed on the community leadership plan to elect Lóvua's representatives which will be based on community inputs.

Identified Needs and Remaining Gaps

- Refugees stressed the impact of recurrent harmful traditions in the community, leading to forced marriage and the abuse of male power/privileges. Refugees urged to strengthen awareness raising on SGBV, by reducing the impunity of SGBV perpetrators and integrating innovative strategies for mass sensitization on SGBV.
- The helpdesk in Cacanda is struggling with no-shows during the pre-manifest and the relocation, as many households listed for departure were absent from the centre.



FOOD SECURITY AND NUTRITION

Achievements and Impact

- **General food distribution:** General food distribution took place in Lóvua and is ongoing in Cacanda. All households are receiving a food basket consisting of maize meal, beans, oil and salt. Distribution of Super Cereal to pregnant and lactating women started this month. This complements the ongoing prevention programme targeting all children 6-23 months with Super Cereal Plus.
- **Nutrition:** Malnutrition trends remain stable. A total of 1,711 children (under 5) were screened in Cacanda and 1,138 children in Lóvua.
- **Coordination:** Discussions between food and nutrition partners are ongoing to strengthen coordination mechanisms for community mobilisation, nutrition sensitisation and beneficiary follow-up. This includes delivering the prevention component in conjunction with strong nutrition messaging focusing on general nutrition and specifically infant and young child feeding (IYCF).

Identified Needs and Remaining Gaps

- There is limited funding to strengthen partners intervention on the prevention of acute malnutrition (blanket supplementary feeding programme) targeting the 1,000 days window of opportunity.

- Funding is needed to provide appropriate treatment for children with moderate acute malnutrition (MAM), despite the reduction on the caseload. This will improve children's health and prevent them from falling into severe acute malnutrition (SAM). This is particularly important among children 24-59 months, who are not covered by the preventive intervention.



HEALTH

Achievements and Impact

- **Primary health care and medical consultations:** General consultations decreased in numbers but increased in severity (from 1,092 to 832). In Cacanda, the main morbidity factor was malaria (39 per cent). In Lóvua, the main morbidity was linked to upper respiratory tract infections (6.3 per cent).
- **Sexual reproductive health (SRH):** In Cacanda, 27 women received antenatal consultations (ANC) and one postnatal consultation (PNC), while in Lóvua, 21 received ANC and one PNC consultation.
- **Mental health:** Mental health activities continued this week, with a total of 16 individual consultations and eight group sessions in Lóvua. In Cacanda, health partners provided psycho-education sessions related to SGBV and followed up on HIV cases.
- **Vaccination:** Child vaccinations, by Lóvua municipality technicians, have started in Lóvua settlement. 18 children have been vaccinated against measles, 24 against pneumonia, 10 covered with pentavalent and 17 received the yellow fever vaccine. This is part of the new approach use local structures and technicians to deliver services in Lóvua.



WATER AND SANITATION

Achievements and Impact

- **Cacanda:** WASH partners are working to avoid flooding of areas and latrines by installing drainage channels and piloting elevated latrines constructed on sunken steel drums. In the light of the envisaged prolonged stay of refugees in Cacanda, its water points are being regrouped, upgraded, fenced and better managed, with less disturbance in the site from water truck movements.
- Water supply is delivering an estimated 16 litres per person per day. Old solid waste pits are regularly emptied, while backfilling has improved the soil surface conditions. Latrines are being closed or reconditioned and new ones constructed at a steady pace, leading to sufficient availability for refugees (44 people per latrine, being 50 the maximum acceptable).

- To improve the conditions in Cacanda the WASH working group carried out a solid waste campaign, where more than 10 cubic metres of solid waste were removed from the reception centre.
- A new pit latrine technology, with semi-permanent latrines, has been introduced in Cacanda. So far a total of 35 latrines are being set in the centre.
- **Lóvua:** All villages in zone A and B (1 to 5), are WASH ready, including access roads to the water tanks/bladders. Meanwhile, work continues in village 6 and 7 of zone B, to be finished before the next relocation. Works are expected to start still this on the remaining villages of zone B (8 and 9).
- Water trucking is ongoing, delivering over 30 litres per person per day. A time schedule will be put in place to manage the demand. The Government donated five water tanks, to be installed in the new villages of zone C and to replace the bladders at the Arrival Centre.
- A survey to assess the water quality per household took place in Lóvua settlement, in order to ascertain the level of adherence to safe hygiene practices and water conservation. The survey showed that 35 per cent of the households consume safe water, while 65 per cent consume water with low chlorination levels. The WASH team will address the findings.

Identified Needs and Remaining Gaps

- Discussions between WASH partners are on-going about the future of the water supply system, as funds may not be sufficient to conclude the WASH response agreement.
- Partners have agreed to prioritize the relocation of all people living in swampy conditions at the low side of Cacanda.
- 65 per cent of Lóvua settlement population consume water with low chlorination levels.



SHELTER AND NFIS

Achievements and Impact

- **Lóvua:** All 85 households relocated this week were settled in village 5B. The road linking village 2B to 5B is now open and all WASH facilities are available and accessible in village 5B, the road will also be linking village 6B before next week's relocation.
- The clearing of the plots in village 6B is complete, and the plots in village 7B are being prepared.
- **Cacanda:** Over 100 households which their shelters were damaged or destroyed by the two heavy rainfalls felt in Lunda Norte, benefited from the quick intervention for basic shelter repairs. Family and communal shelters and communal infrastructures have been repaired with plastic rolls and plastic tarpaulins. The work was done by a refugee team with shelter partners' support.

Identified Needs and Remaining Gaps

- In less than two weeks' time there will be no tents available for the newly relocated refugees to the Lóvua settlement, and the delay on receiving wood will not allow the construction on time of the needed shelters. In order to avoid the halt of the relocation of refugees, alternatives options such as the use of bamboo, are being considered as temporary solutions.

Working in partnership

- Humanitarian and development partners, working on the ground and in the country on various projects, are actively supporting the Government of Angola to ensure adequate and effective response to the needs of the Congolese refugees. A weekly inter-agency coordination meeting is held in Luanda. In Dundo, weekly inter-agency meetings ensure a comprehensive and integrated operational response to the refugee situation. Sectoral working group coordination meetings on Protection, WASH, Health/Nutrition and Communication with Communities are also organized weekly in Dundo.

Partners in the response:

- Angolan Red Cross Society
- CARITAS
- CICAJ - Centro de Investigação Científica e Assessoria Jurídica
- FAO - Food and Agriculture Organization of the United Nations
- IOM - International Organization for Migration
- JRS - Jesuit Refugee Service
- LWF - Lutheran World Federation
- MAG - Mine Advisory Group
- MdM - Médicos del Mundo
- MSF - Médecins Sans Frontières
- NCA - Norwegian Church Aid
- PIN - People in Need
- UNAIDS - The Joint United Nations Programme on HIV/AIDS
- UNDP - United Nations Development Programme
- UNDSS - United Nations Department for Safety and Security
- UNFPA - United Nations Population Fund
- UNHCR - United Nations High Commissioner for Refugees
- UNICEF - United Nations' Children's Fund
- UNRCO - United Nations Resident Coordinator's Office
- WFP - World Food Programme
- WHO - World Health Organization
- WVI - World Vision International

The [Angola Inter-Agency Refugee Appeal \(April – December 2017\)](#) is available on the [Angola Operational Data Portal](#). Agencies are very grateful for the financial support provided by donors, who have contributed to their activities with un-earmarked and broadly earmarked funds, as well as for those who have contributed directly to the operations in Angola.

Special thanks to the Central Emergency Response Fund for their contributions to the inter-agency refugee response in Angola.

Special thanks to Denmark, Italy, the United States of America and private donors in Italy and in the United States of America for their contributions to UNHCR's operations in Angola.

Financial requirements by agency:

Organization	Total (USD)
FAO Food and Agriculture Organization of the United Nations	1,030,000
IOM International Organization for Migration	1,869,438
JRS Jesuit Refugee Service	1,574,790
MAG Mine Advisory Group	585,000
UNAIDS The Joint United Nations Programme on HIV/AIDS	400,000
UNDP United Nations Development Programme	2,550,000
UNDSS United Nations Department for Safety and Security	830,000
UNFPA United Nations Population Fund	1,367,414
UNHCR United Nations High Commissioner for Refugees	36,705,352
UNICEF United Nations' Children's Fund	8,499,703
UNRCO United Nations Resident Coordinator's Office	100,000
WFP World Food Programme	9,100,000
WHO World Health Organization	895,913
Total	65,507,610

CONTACTS

Markku Aikonus, Senior Regional External Relations Officer

aikonus@unhcr.org, Tel: +27 81 797 7456

Margarida Loureiro, External Relations/Reporting Officer

loureiro@unhcr.org, Tel: +224 945 416 383

Rui Padilha, Associate Information Management Officer

padilha@unhcr.org, Tel: +224 949 097 329

LINKS

[Angola Operational Data Portal](#)