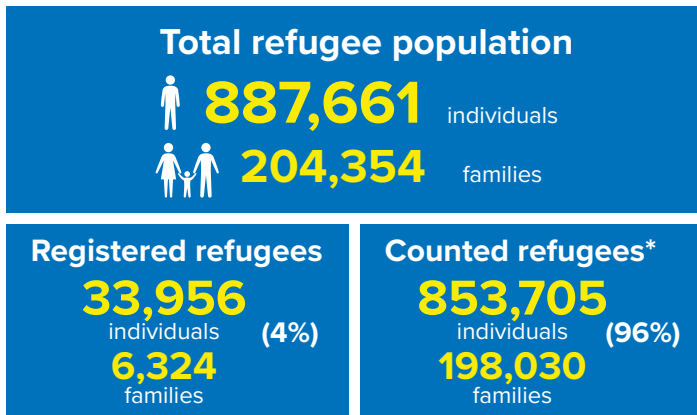
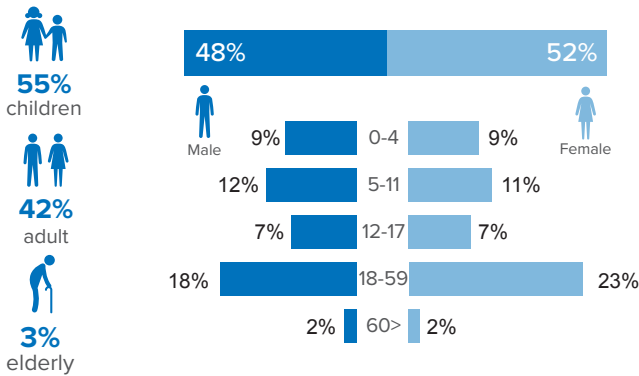


Refugee population figure

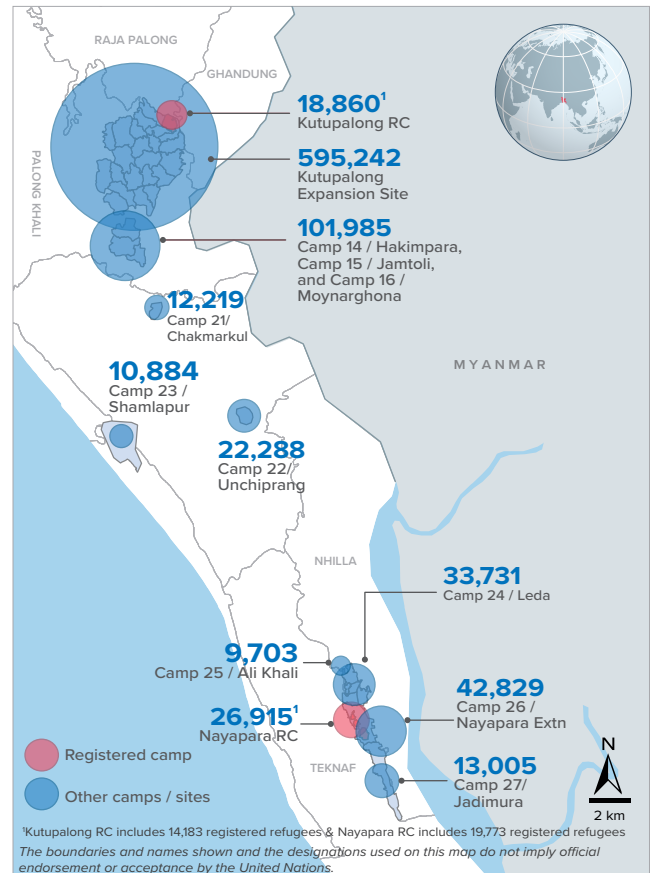


* Some refugees living in host communities and in certain locations beyond the camp boundaries may not have been counted.

Demography

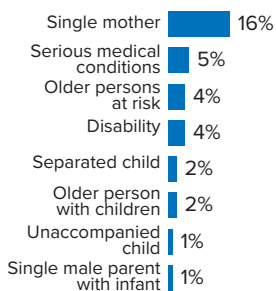


Refugee population density



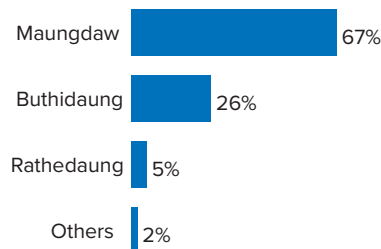
Specific needs

31% of the families have been identified with at least one protection vulnerability*



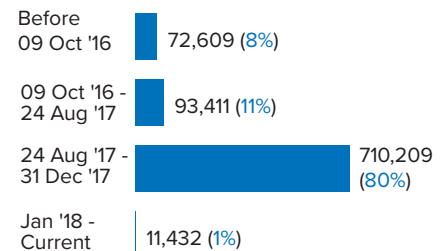
Place of origin

67% of the Rohingya refugees comes from Maungdaw Township



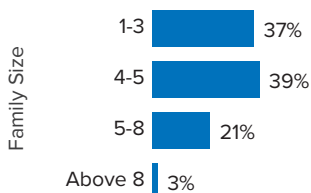
Period of arrival

80% of current population arrived between Aug. and Dec 2017



Family size breakdown

39% of the families have a standard family size of 4-5 persons



Linking exercise

The Linking Exercise, conducted from December 2017 until February 2018, was a collaborative effort between the Government of Bangladesh and the United Nations High Commissioner for Refugees that aimed to merge the family based Rohingya population data collected through the Family Counting Exercise with attributes of the individual Rohingya population data collected by the Ministry of Home Affairs.

The exercise was conducted with a view to creating a unified dataset with individual data grouped into families which will be used to better protect and assist families.

*Figures are the percentage of total families with at least one person with a specific need. More than one specific need may be present within one family.

Age and gender breakdown by camp/site

Camp	Infant female below 1	Infant male below 1	1-4 Children female	1-4 Children male	5-11 Children female	5-11 Children male	12-17 Children female	12-17 Children male	18-59 Adult female	18-59 Adult male	60+ Elderly female	60+ Elderly male	Total Families	Total Individuals
Camp 15	946	893	3,537	3,677	5,282	5,477	3,412	3,596	11,500	9,172	901	905	11,145	49,298
Camp 26	720	647	3,255	3,264	4,930	5,443	3,106	2,915	10,230	7,077	662	580	9,776	42,829
Camp 1W	763	762	2,934	2,951	4,415	4,471	2,688	2,779	9,621	7,736	854	752	9,399	40,726
Camp 13	703	749	3,018	3,110	4,414	4,676	2,714	2,786	9,537	7,573	734	673	9,538	40,687
Camp 1E	659	733	2,779	2,934	4,226	4,446	2,632	2,760	9,256	7,718	789	689	9,126	39,621
Camp 3	687	730	3,024	3,081	4,181	4,407	2,509	2,680	9,330	7,295	684	587	9,102	39,195
Camp 7	710	716	2,971	3,088	4,195	4,416	2,622	2,572	9,096	7,146	713	641	9,240	38,886
Camp 9	622	561	2,771	2,791	3,983	4,038	2,484	2,511	8,531	6,924	715	692	8,642	36,623
Camp 24	513	524	2,290	2,504	4,047	4,169	2,325	2,415	8,043	5,933	547	421	7,804	33,731
Camp 10	645	620	2,610	2,734	3,431	3,781	2,161	2,121	7,822	6,153	610	532	7,709	3,220
Camp 8E	525	522	2,391	2,487	3,549	3,632	2,425	2,357	7,746	6,220	577	579	7,617	33,010
Camp 8W	558	539	2,656	2,599	3,488	3,678	2,068	2,172	7,736	6,166	614	546	7,547	32,820
Camp 11	568	601	2,426	2,468	3,464	3,673	2,196	2,256	7,461	6,103	550	506	7,331	32,272
Camp 14	545	575	2,229	2,471	3,296	3,643	2,221	2,206	7,101	5,707	585	518	6,843	31,097
Camp 4	558	590	2,281	2,441	3,401	3,554	1,960	1,956	7,185	5,617	487	385	7,476	30,415
Camp 2E	534	505	2,169	2,223	3,161	3,430	1,737	1,788	6,871	5,161	504	432	6,846	28,515
Camp 18	484	518	2,281	2,336	2,977	3,090	1,853	1,746	6,621	5,182	364	379	6,799	27,831
Nayapara RC*	87	91	1,580	1,642	2,931	3,037	2,227	2,280	7,169	4,997	457	417	5,733	26,915
Camp 5	450	486	1,997	2,082	2,794	2,858	1,556	1,642	6,051	4,704	457	416	6,131	25,493
Camp 2W	409	407	1,841	1,966	2,832	3,088	1,559	1,571	5,867	4,653	491	372	5,713	25,056
Camp 6	517	446	2,005	2,116	2,699	2,870	1,449	1,549	5,740	4,546	428	388	5,765	24,753
Camp 22	409	384	1,604	1,794	2,560	2,624	1,690	1,681	4,854	3,978	378	332	4,592	22,288
Camp 12	370	356	1,608	1,696	2,357	2,634	1,567	1,528	5,081	3,973	404	353	4,856	21,927
Camp 16	434	396	1,589	1,671	2,328	2,538	1,522	1,438	4,966	4,003	383	322	4,828	21,590
Camp 19	327	314	1,533	1,613	2,153	2,395	1,373	1,412	4,630	3,610	326	281	4,580	19,967
Kutupalong RC*	90	76	1,102	1,260	2,001	2,152	1,510	1,444	4,810	3,838	296	281	3,770	18,860
Camp 17	215	257	1,218	1,218	1,600	1,670	912	901	3,402	2,601	215	208	3,393	14,417
Camp 27	222	194	1,006	1,072	1,545	1,542	925	958	3,010	2,165	198	168	2,891	13,005
Camp 21	227	211	905	957	1,341	1,405	758	801	2,943	2,354	184	133	2,992	12,219
Camp 23	182	200	796	824	1,446	1,472	629	648	2,668	1,689	171	159	2,642	10,884
Camp 25	141	160	725	716	1,133	1,217	760	700	2,254	1,611	172	114	2,185	9,703
Camp 20	81	92	332	387	521	560	246	287	1,165	824	78	67	1,133	4,640
No camp**	76	71	354	375	506	541	280	307	1,045	810	84	66	1,050	4,515
Camp 20 Extension	8	10	48	53	72	79	42	42	151	115	6	7	154	633
Camp 4 Extension	-	1	2	3	1	1	1	2	5	4	-	-	5	20
Total	14,985	14,937	65,867	68,604	97,260	102,707	60,119	60,807	209,498	163,358	15,618	13,901	204,354	887,661

*Kutupalong RC includes 14,183 registered refugees & Nayapara RC includes 19,773 registered refugees

**This represents refugees residing outside formal camp boundaries

Population figures by period of arrival

Arrival Period	Before 09 Oct 2016		09 Oct 2016 - 24 Aug 2017		25 Aug 2017 - 31 Dec 2017		01 Jan 2018 - Current date		Total Families	Total Individuals
	Total Families	Total Individuals	Total Families	Total Individuals	Total Families	Total Individuals	Total Families	Total Individuals		
Camp 15	11	47	768	3,405	10,365	45,838	1	8	11,145	49,298
Camp 26	72	352	851	3,797	8,397	36,703	456	1,977	9,776	42,829
Camp 13	11	42	788	3,445	8,738	37,196	1	4	9,538	40,687
Camp 1W	22	86	1,043	4,471	8,315	36,105	19	64	9,399	40,726
Camp 7	121	533	1,057	4,576	8,022	33,603	40	174	9,240	38,886
Camp 1E	33	159	1,608	6,902	7,464	32,485	21	75	9,126	39,621
Camp 3	17	80	951	4,186	8,122	34,876	12	53	9,102	39,195
Camp 9	89	349	2,137	8,695	6,414	27,571	2	8	8,642	36,623
Camp 24	2,181	10,561	527	2,224	5,080	20,894	16	52	7,804	33,731
Camp 10	8	39	605	2,582	7,089	30,574	7	25	7,709	33,220
Camp 8E	38	156	893	3,909	6,669	28,873	17	72	7,617	33,010
Camp 8W	23	106	657	2,864	6,808	29,629	59	221	7,547	32,820
Camp 4	17	81	291	1,198	6,960	28,272	208	864	7,476	30,415
Camp 11	1	3	1,120	4,969	6,209	27,298	1	2	7,331	32,272
Camp 14	7	25	592	2,745	6,238	28,298	6	29	6,843	31,097
Camp 2E	3,224	13,630	1,667	7,045	1,937	7,779	18	61	6,846	28,515
Camp 18	15	63	169	699	6,590	26,978	25	91	6,799	27,831
Camp 5	23	90	541	2,309	5,552	23,038	15	56	6,131	25,493
Camp 6	57	257	1,080	4,867	4,616	19,586	12	43	5,765	24,753
Nayapara RC*	3,752	19,963	252	977	1,694	5,869	36	106	5,734	26,915
Camp 2W	1,833	8,413	1,388	6,041	2,454	10,464	38	138	5,713	25,056
Camp 12	3	15	236	1,074	4,613	20,818	4	20	4,856	21,927
Camp 16	5	25	282	1,249	4,541	20,316	-	-	4,828	21,590
Camp 22	4	31	206	1,001	4,381	21,253	1	3	4,592	22,288
Camp 19	1	4	381	1,723	4,137	17,962	61	278	4,580	19,967
Kutupalong RC*	2,928	15,504	194	768	633	2,540	15	48	3,770	18,860
Camp 17	23	105	136	554	2,142	8,973	1,092	4,785	3,393	14,417
Camp 21	12	53	145	632	2,723	11,118	112	416	2,992	12,219
Camp 27	29	142	259	1,213	2,470	11,041	133	609	2,891	13,005
Camp 23	254	1,171	284	1,210	2,101	8,491	3	12	2,642	10,884
Camp 25	18	90	254	1,133	1,909	8,461	4	19	2,185	9,703
Camp 20	52	236	72	322	865	3,534	144	548	1,133	4,640
No camp**	36	158	136	582	831	3,573	47	202	1,050	4,515
Camp 20 Extension	10	40	13	44	44	180	87	369	154	633
Camp 4 Extension	-	-	-	-	5	20	-	-	5	20
Grand Total	14,930	72,609	21,583	93,411	165,128	710,209	2,713	11,432	204,354	887,661

*Kutupalong RC includes 14,183 registered refugees & Nayapara RC includes 19,773 registered refugees

**This represents refugees residing outside formal camp boundaries

Creation date: 18 June 2018 Sources: UNHCR Feedback: bgdcoim@unhcr.org

Population figures by specific needs

Camp	Families with separated children	Families with unaccompanied children	Families with a person with disability	Families with older person at risk	Families with older person at risk with children	Families with people with serious medical condition	Single male parents with infants	Single female parent	Families with people with specific needs
Camp 26	178	55	290	372	115	230	81	2,252	3,345
Camp 15	237	60	353	589	197	463	63	1,612	3,202
Camp 1E	171	43	553	451	325	486	57	1,141	2,898
Nayapara RC	178	41	608	168	51	1,203	35	1,198	2,837
Camp 7	225	29	355	363	244	461	105	1,269	2,777
Camp 1W	164	32	402	450	217	450	66	1,268	2,764
Camp 13	248	79	309	394	208	344	64	1,423	2,751
Camp 3	198	62	374	354	293	332	65	1,420	2,660
Camp 24	177	74	301	289	121	258	43	1,644	2,645
Camp 9	152	75	388	398	268	498	100	1,069	2,548
Camp 10	130	80	400	355	253	530	97	1,065	2,484
Camp 4	241	88	183	292	195	272	100	1,433	2,462
Camp 8E	169	78	366	390	253	434	88	1,110	2,450
Camp 18	157	62	247	228	171	309	83	1,186	2,163
Camp 2E	157	51	255	240	194	310	51	1,160	2,136
Camp 11	176	63	278	305	161	243	69	1,117	2,034
Camp 5	163	72	214	290	171	212	64	1,115	1,992
Camp 14	118	46	184	314	137	305	42	966	1,847
Camp 6	168	45	224	242	127	322	40	818	1,823
Camp 8W	89	38	249	272	160	293	80	747	1,695
Camp 2W	106	18	283	238	112	268	60	789	1,684
Kutupalong RC	60	15	351	106	39	768	10	580	1,595
Camp 19	119	32	184	211	79	116	44	729	1,361
Camp 12	80	34	143	201	104	138	34	772	1,340
Camp 16	92	22	171	201	81	162	37	711	1,322
Camp 22	70	17	159	156	77	154	16	580	1,115
Camp 17	99	19	119	135	69	102	34	617	1,063
Camp 23	50	12	75	96	43	69	11	742	1,010
Camp 27	49	13	93	76	33	49	21	680	945
Camp 21	66	23	109	94	32	108	34	511	894
Camp 25	38	23	75	84	36	87	18	501	766
Camp 20	16	12	61	45	30	49	12	215	385
No camp	23	10	40	57	15	27	9	197	342
Camp 20 Extension	-	1	1	4	1	-	2	23	33
Camp 4 Extension	-	-	1	-	-	-	-	1	1
Total	4,364	1,424	8,398	8,460	4,612	10,052	1,735	32,661	63,369

Population density by camps in KTP

Using GIS technology, polygons of the camps were established. The GPS coordinates of each family were then mapped into the polygons, in order to determine the total number of families and individuals within each camp.

Based on the high quality drone imagery and field mapping conducted by Site Planning unit, the total usable area and non-usable area was calculated jointly by UNHCR with IOM. While the usable area refers to areas populated by refugees, the non-usable areas refers to flood and landslide prone areas.

Note: The recommended minimum surface area is 45 m² per person when planning a refugee camp (including kitchen / vegetable gardening space). However the actual surface area per person (excluding garden space) should not be less than 30 m² per person.

Camp	Total Families	Total Individuals	Useable area (sqm)	% useable area	Unuseable area (sqm)	Average usable area per person (sqm)
Camp 6	5,765	24,753	15,549.13	4%	346,464.55	0.63
Camp 7	9,240	38,886	187,746.25	26%	526,339.25	4.83
Camp 17	3,393	14,417	105,265.74	12%	773,225.50	7.30
Camp 18	6,799	27,831	215,867.55	29%	535,809.11	7.76
Camp 8W	7,547	32,820	261,919.44	34%	510,261.66	7.98
Camp 2E	6,846	28,515	231,810.44	60%	157,511.49	8.13
Camp 10	7,709	33,220	275,403.52	56%	220,741.93	8.29
Camp 11	7,331	32,272	291,155.08	62%	174,864.36	9.02
Camp 3	9,102	39,195	370,579.30	81%	89,175.01	9.45
Camp 9	8,642	36,623	364,589.86	56%	284,492.95	9.96
Camp 2W	5,713	25,056	251,214.12	63%	147,230.93	10.03
Camp 1W	9,399	40,726	453,408.96	85%	80,984.99	11.13
Camp 4	7,476	30,415	358,275.42	32%	765,423.70	11.78
Camp 5	6,131	25,493	312,596.39	51%	302,700.82	12.26
Camp 8E	7,617	33,010	433,694.96	45%	522,855.70	13.14
Camp 13	9,538	40,687	566,311.36	76%	180,248.89	13.92
Camp 1E	9,126	39,621	608,228.12	96%	25,354.87	15.35
Camp 19	4,580	19,967	340,459.65	48%	373,588.12	17.05
Kutupalong RC*	3,770	18,860	340,824.72	89%	40,514.96	18.07
Camp 12	4,856	21,927	487,402.76	77%	143,735.69	22.23
Camp 20	1,133	4,640	230,466.42	46%	268,065.66	49.67

*Kutupalong RC includes 14,183 registered refugees