

Rhino Camp Refugee settlement

Health and Nutrition updates-Week 05 (25th to 31st January 2018).

Health & Nutrition															
Health															
Partners and agencies: UNHCR, UNFPA, UNICEF, ADLG, Medical teams international (MTI), Save the Children International (SCI), Global Refuge International, The Transcultural Organization (TPO), MMC, AMREF, CARE Uganda international, CUAMM Doctors with Africa, Uganda Red Cross Society (URCS).															
Total OPD/ IPD Consultations	<ul style="list-style-type: none"> OPD consultations: 4,755 (3,119 refugees and 1,636 nationals) new OPD consultations were made in week 05 compared to 4,695 in week 04. Of the consultations 66% were to refugees and 34% to nationals. Mental Health and Psychosocial Support (MHPSS): 26 new and 00 revisit clients received MHPSS in week 05 as was in week 04. Major conditions being epilepsy, PTSD, depression, acute stress disorder and developmental disorders. New IPD admissions: 138 (71 refugees and 67 Nationals) new IPD admissions were made in week 05 compared to 89 in week 04. New referrals: 35 (21 refugees and 14 nationals) new referrals were made to Arua regional referral hospital in week 05 compared to 37 in week 04. While 08 referrals from the community were served by health facilities within the settlement. 														
Morbidity	<p>Proportional Morbidity:</p> <ul style="list-style-type: none"> 787 (17%) Malaria confirmed cases 1,194 (25%) Acute RTI 276 (6%) Watery Diarrhoea 06 cases of dysentery. 00 case of typhoid fever 	<p>Medical screening, Vaccination; Deworming ; Vitamin A</p>	<p>Expanded programme on immunization /EPI updates:</p> <ul style="list-style-type: none"> 304 individuals vaccinated in week 05 compared to 682 in week 04. 235 individuals received Vitamin A supplementation in week 05 compared to 90 in week 04. 147 mothers and girls of reproductive age were vaccinated against TT in week 05 compared to 175 in week 04. 110 individuals dewormed in week 05 compared to 103 in week 04. 												
Priorit y diseas e	A F P	Ani mal bite s	Chol era	Blo dy diar rhe a	Wate ry diarr hea	G u i n e a W o r m	Mala ria	M e A S I e s	Meni ngitis	Yell ow Fev er	N N T	V H F	Ty ph oi d	MD R TB	Huma n Influe nza sampl es
cases	0	0	0	06	276	0	787	0	0	0	0	0	0	0	0
Death s	0	0	0	0	0	0	0	0	0	0	0	0	0	0	0
Suspect cholera Cases Identified in the Day		0					Suspect cholera Cases Undergoing Treatment			0					

Suspected Acute Flaccid Paralysis cases	<p style="text-align: center;">0</p>	Suspected Acute Flaccid Paralysis cases undergoing treatment	<p style="text-align: center;">0</p>																						
Mortality	<p>Deaths: No 00 deaths was reported in week 05 compared to 01 in week 04. 00 death from health center's and 00 from the community. There was no (00) maternal death and 00 death among neonates.</p> <p>Crude mortality rate (CMR): 0.0 deaths/10,000/day in week 05 compared to 0.01 deaths/10,000/day in week 04.</p> <p>Under Five Mortality (U5MR): 0.0 deaths/10,000/day in week 05 as was in week 04.</p>	Health Workers per 10,000 Population	<p>Total # skilled staff= 140 (medical officers, clinical officers, nurses and midwives). This translates to 12/10,000 population. Given the current population of under 120,725 and 56,657 nationals (Total 172,001), children <5 years 24,362 as at 25th January 2018.</p>																						
Reproductive Health Mortality / HIV, TB care	<p>Antenatal Care:</p> <ul style="list-style-type: none"> ▪ Total ANC: 316 (149 refugees and 167 nationals) total ANC visits were made in week 05 compared to 313 in week 04. ▪ First ANC Visit: 129 (73 refugees and 56 nationals) attended first ANC in week 05 compared to 130 in week 04. ▪ Fourth ANC visits: 54 (33 refugees and 21 nationals) attended fourth ANC in week 05 compared to 47 in week 04. <div data-bbox="336 1144 932 1693" style="border: 1px solid black; padding: 5px;"> <p>Labour and delivery care:</p> <p style="text-align: center;">Weekly Deliveries in Rhino Camp settlement</p> <table border="1" style="width: 100%; text-align: center;"> <caption>Weekly Deliveries in Rhino Camp settlement</caption> <thead> <tr> <th>Week</th> <th>Deliveries</th> <th>Refugees</th> <th>Nationals</th> </tr> </thead> <tbody> <tr> <td>WK 1</td> <td>55</td> <td>32</td> <td>22</td> </tr> <tr> <td>WK 2</td> <td>52</td> <td>30</td> <td>23</td> </tr> <tr> <td>WK 3</td> <td>48</td> <td>15</td> <td>33</td> </tr> <tr> <td>WK 4</td> <td>62</td> <td>32</td> <td>31</td> </tr> <tr> <td>Wk 5</td> <td>52</td> <td>20</td> <td>31</td> </tr> </tbody> </table> </div> <p>Elimination of mother to child HIV transmission (eMTCT) services:</p> <ul style="list-style-type: none"> • 129 (73 refugees and 56 nationals) pregnant mothers who attended ANC1 were offered HIV testing services in week 05 compared to 130 in week 04 and all were found HIV negative. • No (00) HIV positive delivery, therefore, 100% eMTCT coverage. <p>HIV and AIDS services:</p> <ul style="list-style-type: none"> • 04 (04 refugees and 00 national) individuals were newly tested HIV positive in week 05 compared to 11 in week 04. • 430 (384 refugees and 46 nationals) individuals were offered HIV testing services in week 05 compared to 630 in week 04. • 04 new HIV positives was initiated on HIV care and support. • 7,048 pieces of condoms were distributed in week 04 for HIV <p>• 52 (21 refugees and 31 nationals) deliveries were conducted by skilled health workers in week 05 compared to 62 in week 04.</p> <p>Post-natal Care (PNC)</p> <ul style="list-style-type: none"> • 98 (45 Refugees and 53 Nationals) mothers attended PNC in week 05 compared to 144 in week 04. <p>Family planning services:</p>	Week	Deliveries	Refugees	Nationals	WK 1	55	32	22	WK 2	52	30	23	WK 3	48	15	33	WK 4	62	32	31	Wk 5	52	20	31
Week	Deliveries	Refugees	Nationals																						
WK 1	55	32	22																						
WK 2	52	30	23																						
WK 3	48	15	33																						
WK 4	62	32	31																						
Wk 5	52	20	31																						

- 06 (05 refugees and 01 national) women received modern contraceptives in week 05 compared to 15 in week 04.

prevention in the community compared 3,185 in week 04.

TB care and treatment:

- 03 individual tested TB positives in week 05 compared to 01 in week 04. 03 started on TB treatment.

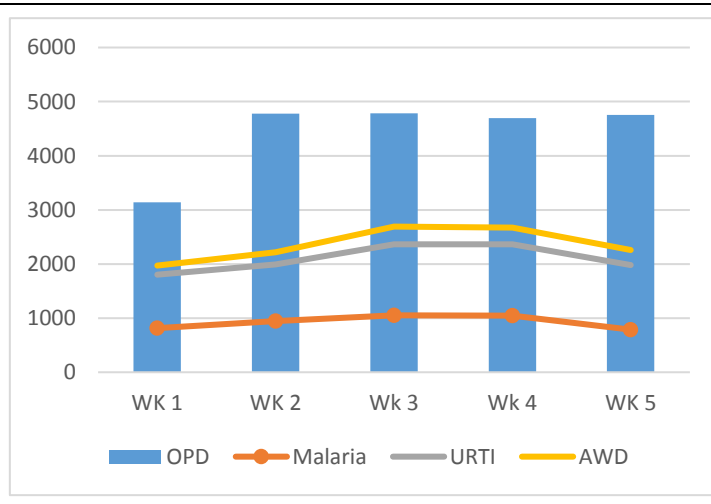
Achievements and Impact

OPD Consultations: 4,755 (3,119 refugees and 1,636 nationals) new OPD consultations were made in week 05 compared to 4,695 in week 04. Sixty four percent 66% of the consultations to refugees and 34% to nationals.

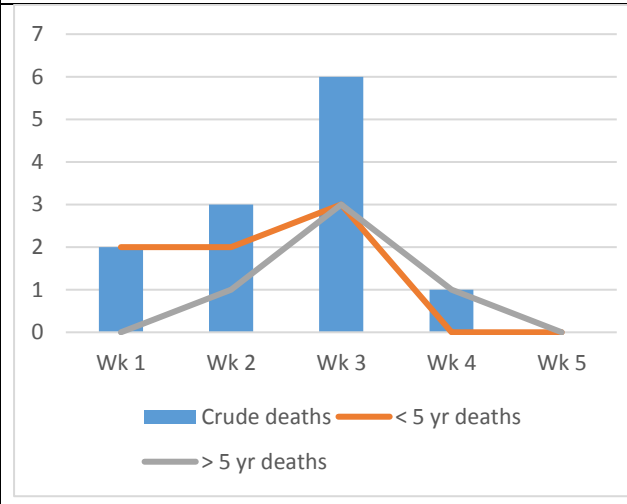
Respiratory Tract infections topped the most common ailments among the consultations with 25% and Malaria was second with 17% of the consultations and acute watery diarrhoea was among 6% of the OPD consultations. Therefore malaria, URTI and AWD contributed to 48% in week 05 of the overall consultations compared to 57% in week 04. The incidence of malaria and watery diarrhoea is estimate at 7 cases/1000 persons/week, RTI 10 cases/1000 persons /week and AWD 3 cases/ 1000/ week respectively.

Mortality and Morbidity:

Weekly OPD consultations and Morbidity trends in Rhino Camp settlement



Weekly Mortality trends in Rhino camp settlement



- No 00 deaths were reported from Rhino Camp settlement in week 05 compared to 01 in week 04. None (00) death was among individuals above 5 years and 00 among individuals less than 5 years. 00 deaths were reported from health center's and 00 from the community. There was no (00) premature, 00 neonatal deaths/< 28 days old deaths, and 00 maternal deaths. Therefore, Crude Mortality Rate (CMR) was 0.0 deaths/10,000/day and under-5 year mortality ratio (U5MR) was at 0.0 deaths/10,000/day below the emergency threshold of 1 and 2 deaths/10,000/day respectively.

Community Disease surveillance and control of Outbreaks

- No (00) reports of suspected diseases of outbreak potential was reported in Rhino Camp settlement in week 05. In the settlement 194 VHT's are actively involved in reporting cases from the community to health facilities.
- Surveillance activities especially educating health workers and VHT's on VHF and Rift Valley Fever have been maintained during the week

Others activities and highlights in the week

- SCI continued to conduct daily outreaches in Omugo extension and Ofua I health post. SCI reached 766 (652 refugees and 114 nationals) with medical consultations in the community in week 05 compared to 1,502 in week 04.
- MTI, GRI and SCI continued to carryout routine static and outreach activities in the 7 zones of Rhino Camp settlement and other partners most notably Arua district local government at Siripi, GRI at Odoubu HCII, MTI at Ofua, Olujobo and Ocea and Omugo I health post.
- TPO supported 19 (02 males and 17 females) clients with MHPSS in the settlements in week 05 compared to 12 in week 04.

Identified Needs and Remaining Gaps

- During the week there was stock of BCG and TT vaccines in some sites leading to reduced number of children vaccinated in the week. Requests have been placed to the district vaccine store.
- There is limited isolation space in the settlement facilities. MTI will be supported through UNHCR to construct at least 2 isolation units to receive the suspected cases with priority diseases.
- In the week there has been reported stock out of Health information system (HIS) tools (OPD tally sheets, HIS weekly reporting templates, monthly report sheets, Outbreak alert forms). The UNHCR/partners to print additional HIS tools for data collection, and reporting.
- There is transport challenge for coordinating community interventions in the settlement. In the meantime, there is integration of nutrition, expanded immunization activities (EPI) and outreaches in the community.

Nutrition

Partners and Agencies: World Food Programme (WFP), UNHCR, ADLG/DHO, Andre Foods International (AFI), Pentecostal Assemblies of God (PAG), Save the Children International (SCI), Medical Teams International (MTI), Global Refuge International, CUAMM Doctors with Africa, Welthungerhilfe (WHH), AMREF

Overall Rhino Camp Settlement weekly active case finding Children less than 5 years Screened for nutritional status 3,941 (35 MAM and 08 SAM).	1.1%	Kuluba New arrival Weekly proxy Global Acute Malnutrition among children 6-59 months, MUAC (< 125 mm and/or oedema) 30 screened (00 MAM 00 SAM). Pregnant and lactating screened 21 screened, 00 <23 cm and 21 were >23 cm were 23	0.0%
Olujobo Screened for nutritional status 719 screened (08 MAM and 02 SAM)	1.4%	Ofua Screened for nutritional status 192 (00 MAM and 00 SAM)	0.0%
Siripi Screened for nutritional status 414 screened (04 MAM and 02 SAM)	1.9%	Oduobu Screened for nutritional status 1,025 (01 MAM and 03 SAM)	0.4%
Omugo zone Screened for nutritional status 1,350 screened (20 MAM and 01 SAM)	1.6%	Ocea Screened for nutritional status 241 (02 MAM and 00 SAM)	0.8%
General Food Distribution Rhino Camp (kilocalories/person/day)	N/A	New arrivals ration (kilocal /person/day)	N/A

Narrative

Achievements and Impact

- 30 children < 5 years and 21 pregnant and lactating women were screened for their nutritional status at Kuluba transit center with a proxy GAM rate of 0.0% in week 05 compared to 4.5% in week 04.
- In the Rhino settlement, 3,941 children less than 5 years were screened for their nutritional status in week 05 compared to 5,011 in week 04. Therefore, the weekly proxy Global acute malnutrition in Rhino Camp settlement using MUAC and WHZ score is 1.1% in week 05 compared to 1.2% in week 04. The proxy GAM rate were distributed as follows with Siripi at 1.9%, Omugo zone at 1.6%, Ofua at 0.0%, and Olujobo at 1.4%, Oduobu 0.4%, and Ocea 0.8%.
- 43 children less than 5 years were enrolled in targeted supplementary feeding program in week 05 compared to 46 in week 04. In Week 04, six 6 (04 refugees and 02 national) was admitted in the Outpatient Therapeutic program (OTP). Similarly, 318 mothers were enrolled in maternal child health nutrition program in week 05 compared to 779 in week 04.
- 17 beneficiaries week exited from the TSFP, of which only 14 had cured, 02 transferred out, 03 transferred to OTP/ITP, 00 defaulters, and 01 non response. Overall for Rhino Camp settlement recovery rate in week 05 was 93.3% in week 05 as was in week 04. Other performance 0% death rates, 01 (6.7%) non response rate, defaulter rates 0 (0.0%) above UNHCR standards of less than 15%.
- In the OTP, 01 beneficiaries were exited with 01 cured, 00 non-response and 00 death. Therefore recovery/cure rates in OTP was 100%, 0% death rate and 0 (0.0%) non-response rate.

Other nutrition activities during the week

Health Education and IYCF sensitization:

- AFI reached 1,105 individuals with maternal IYCF-E messages in week 05 compared to 1,810 in week 04.

IYCF through mother baby areas:

- During the week SCI continued to run 03 MBA's in Eden and in Rhino Camp and 03 in Omugo. Cumulatively in week 05, 114 (114 refugees and 00 nationals) were being served in MBA's in the settlement.
- SCI reached 256 (100 individuals in the community, 108 lactating mothers and 48 pregnant mothers) in week 05 compared to 403 in week 04.

Follow up of defaulters in the community:

- During the week, AFI followed up defaulters in all the 7 zones of the settlement

Food and cooking demonstration:

- In week 05, AFI conducted a food and cooking demonstration in Oduobu zone and reach 65 pregnant and lactating mothers.

Quarterly Mass Nutrition screening in the community:

- In week 05, AFI, SCI, CUAMM, GRI, MTI, and ADLG/DHO conducted two day mass nutrition screening in all the 7 zones in the settlement.

Identified Needs and Remaining Gaps

- No major reported challenges in week 05