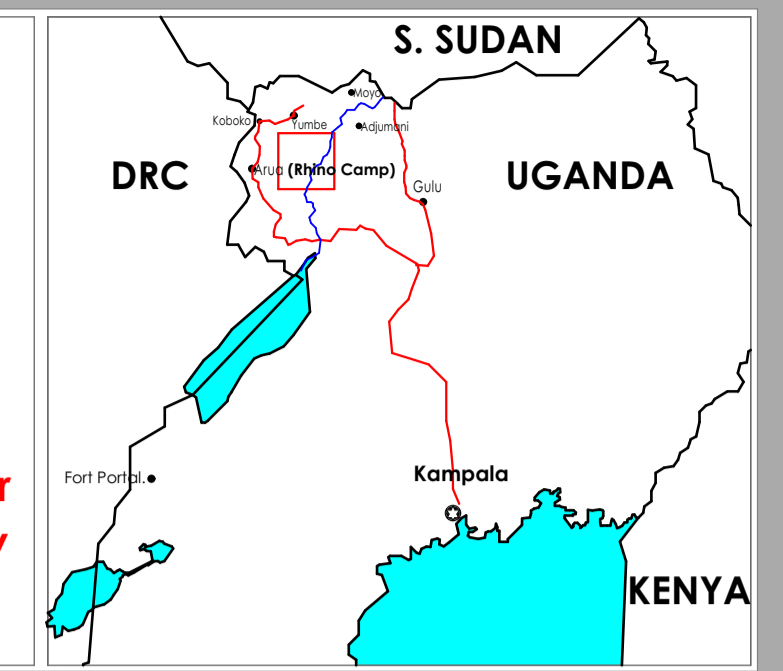


RHINO CAMP REFUGEE SETTLEMENT IN ARUA DISTRICT MASTERPLAN

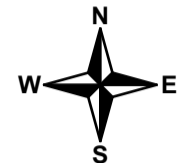
DRAFT X As of 21st of March 2018



The boundaries and names shown and the designation used on this map do not imply official endorsement or acceptance by United Nations



Map for Internal use by UNHCR and its Partners



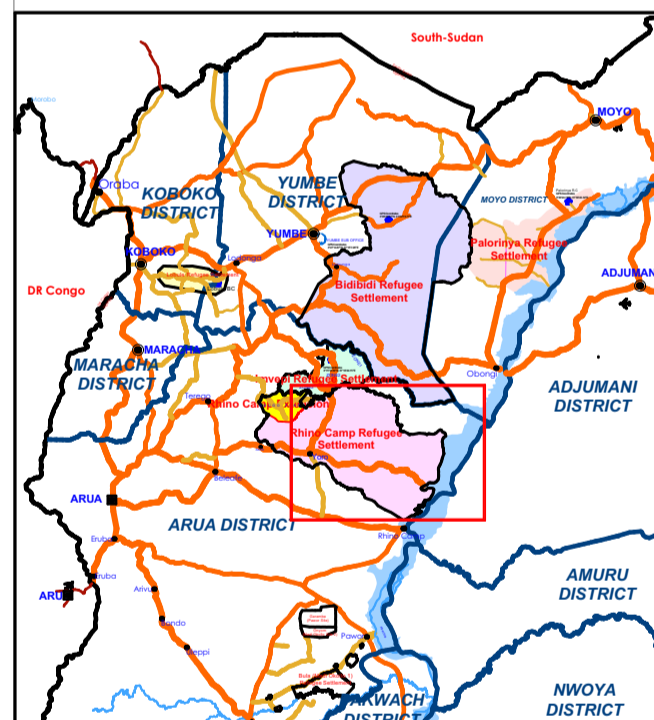
Total Gross area of Rhino Camp Refugee Settlement = 85.525 Km²

Total available receiving capacity in Rhino Camp Refugee Settlement Absorption Area - 5.503 Km²

88% of 5.503 = 4.843 Km² for Agriculture and Residential.
12% of 5.503 = 0.660 Km² for Roads and Facilities.

Residential = 4.843/0.0025 = 1,937 Families
= 1,937 Families x 5 Persons/Family
= **9,685 People**

AVAILABLE ABSORPTION CAPACITY (Km ²)	POPULATION AS OF 30 JANUARY 2018
OCEA ZONE 1	0.000
SIRIPI ZONE 2	0.000
EDEN ZONE 3	0.000
TIKA ZONE 4	96,199
ODOBU ZONE 5	0.000
OFUA ZONE 6	0.000
OMUGO ZONE 07	20,781
OFUA ZONE 1&6	0
GBULUKU ATUNI	0
TOTAL	116,980



Map Legend Existing Infrastructure

- WATER, SANITATION & HYGIENE**
- Motorized Borehole
 - Hand pumps
 - System tanks
 - Trucking Tanks
- GENERAL INFRASTRUCTURE**
- District Access Rd.
 - Existing access roads
 - Roads under DANIDA
 - Zonal Boundaries
 - Rivers
 - Existing Culvert / Bridge
 - School/Play ground
 - Early Childhood Development
 - Swamp
 - Ofua Zone
 - Siripi Zone
 - Ocea Zone
 - Possible Absorption Space
 - Eden Zone
 - Odobu Zone
 - Health Centre
 - Child Friendly Space
 - Market
 - Help Desk
 - Trading Centre
 - Nationals
 - Police station
 - Recreational Facility
 - Rhino Camp Reception Centre
 - Permanent Food Distribution Point
 - Satellite Food Distribution Point
 - Proposed Permanent Food Distribution Point
 - Proposed Satellite Food Distribution Point

