



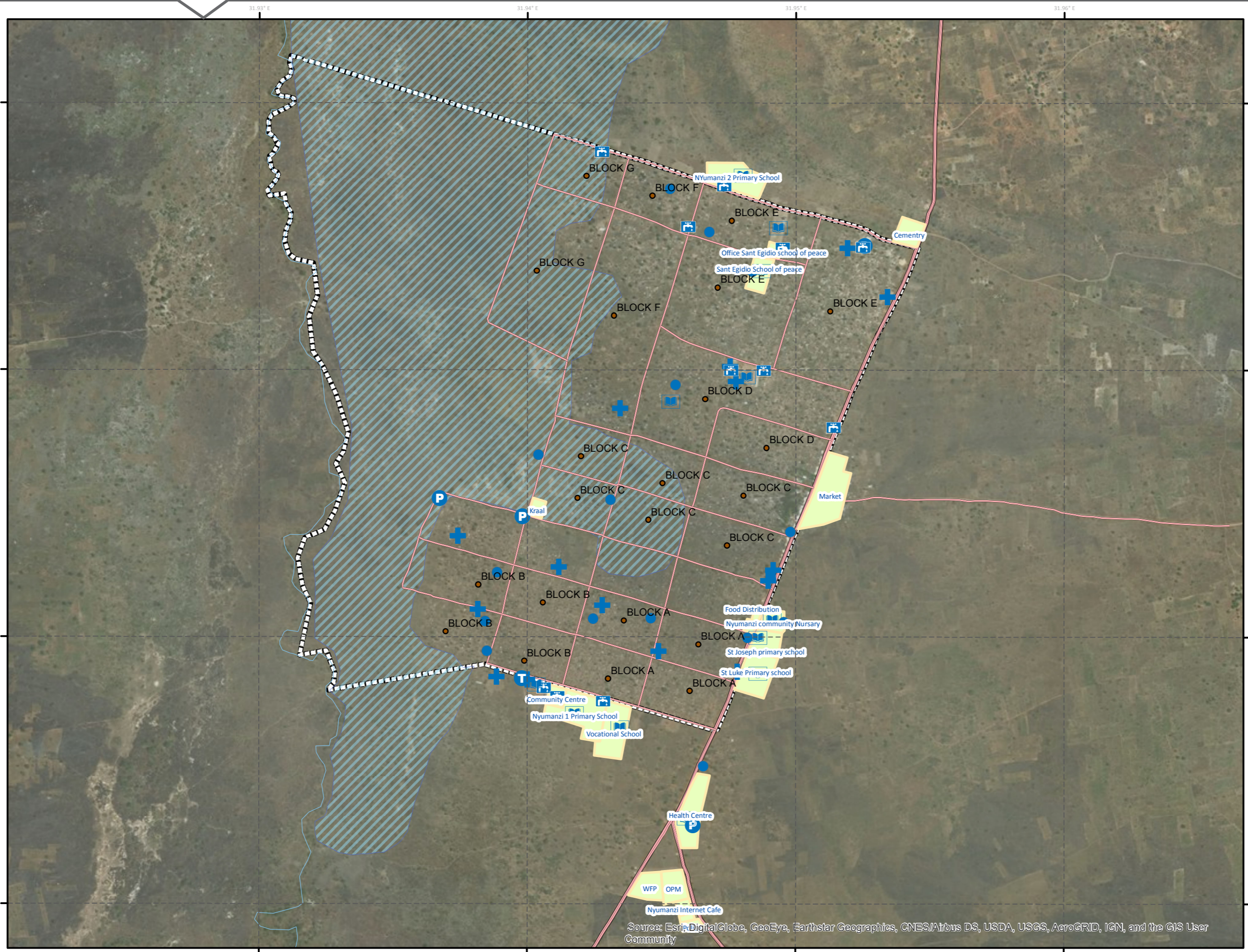
Principal settlement specifications

District: Adjumani
Subcounty: Djaipi
Date of establishment: 1 Jan 2014
Surface Area: 488 hectares
Current population:
Family plot: 30m x 30m
Number of blocks: 23

Coordinate System: GCS WGS 1984
Datum: WGS 1984
Units: Degree

Legend

- Church
- School/ECD/CFS
- Tap
- Borehole
- Water Tank
- Pump
- River
- Access Roads
- major Roads
- Wet Spot
- Settlement



Source: Esri, DigitalGlobe, GeoEye, Earthstar Geographics, CNES/Airbus DS, USDA, USGS, AeroGRID, IGN, and the GIS User Community