



Principal settlement specifications

District: Adjumani
Subcounty: Djaipi
Date of establishment: 1 Jan 2016
Surface Area: 531 hectares
Current population:
Family plot: 30m x 30m
Number of blocks:

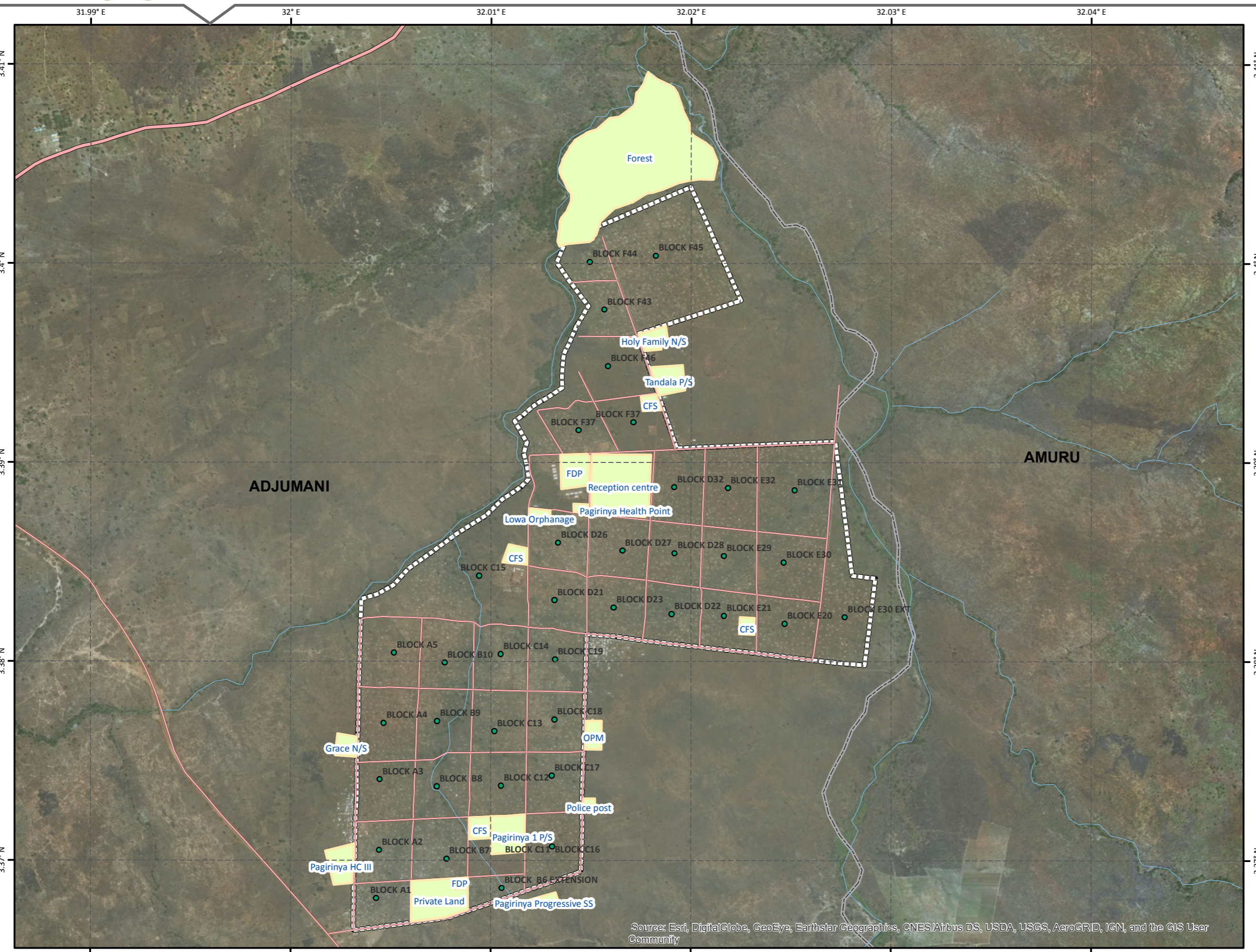
Coordinate System: GCS WGS 1984
Datum: WGS 1984
Units: Degree

Legend

- Borehole
- Church
- Health Center
- Market
- Police
- Reception
- School
- Access Roads
- River
- Major Roads
- Blocks
- Settlement

1:20,000

0 0.125 0.25 0.5 Km



Source: Esri, DigitalGlobe, GeoEye, Earthstar Geographics, CNES/Airbus DS, USDA, USGS, AeroGRID, IGN, and the GIS User Community