

Comprehensive Refugee Response Framework Energy & Environment Technical Working Group

ReHoPE

Energy & Environment Response Plan

February 5, 2018

Presentation Revision 1

Presentation Outline



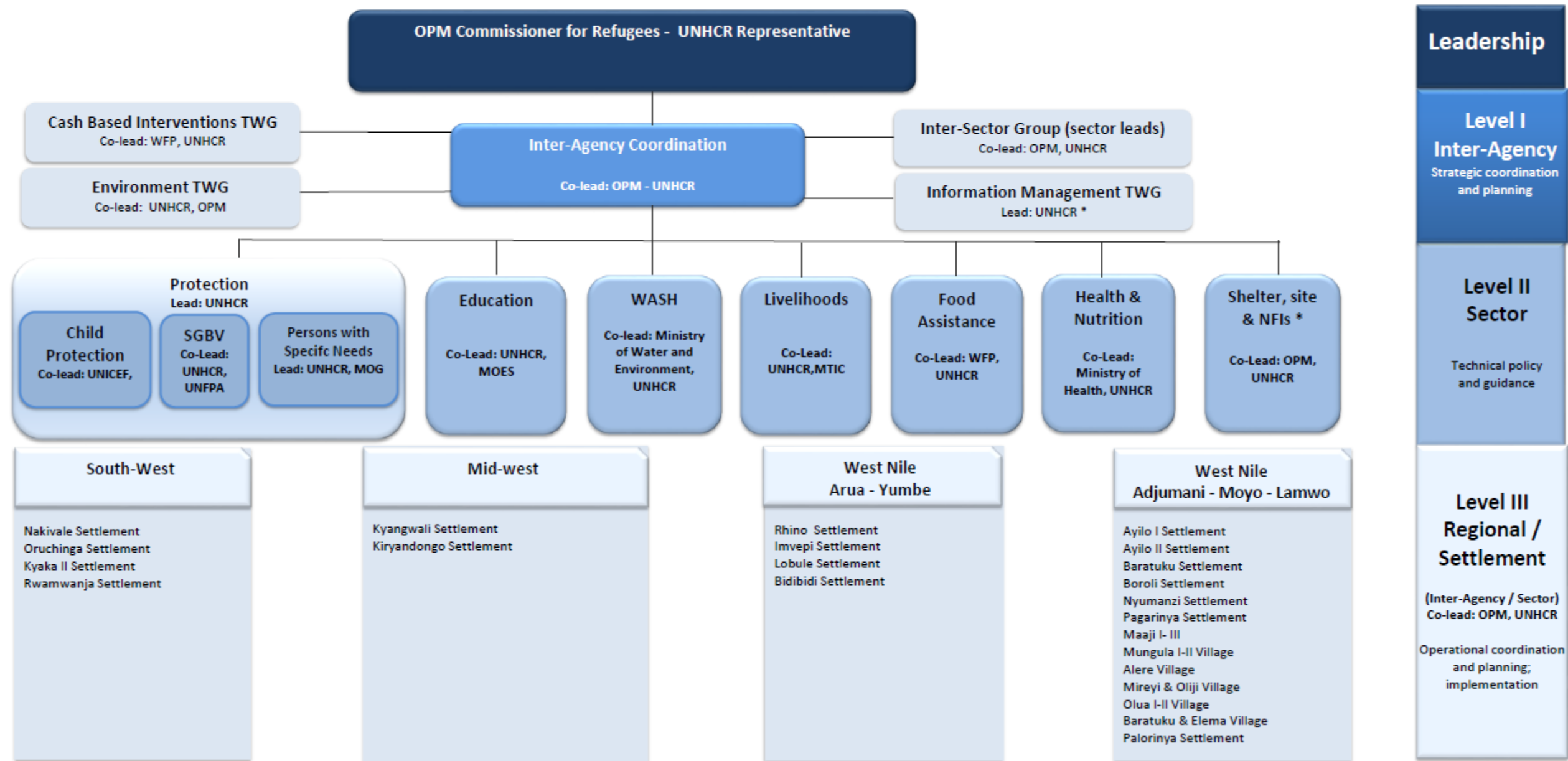
Purpose: To validate preliminary elements of the overall EE Response Plan

Overview:

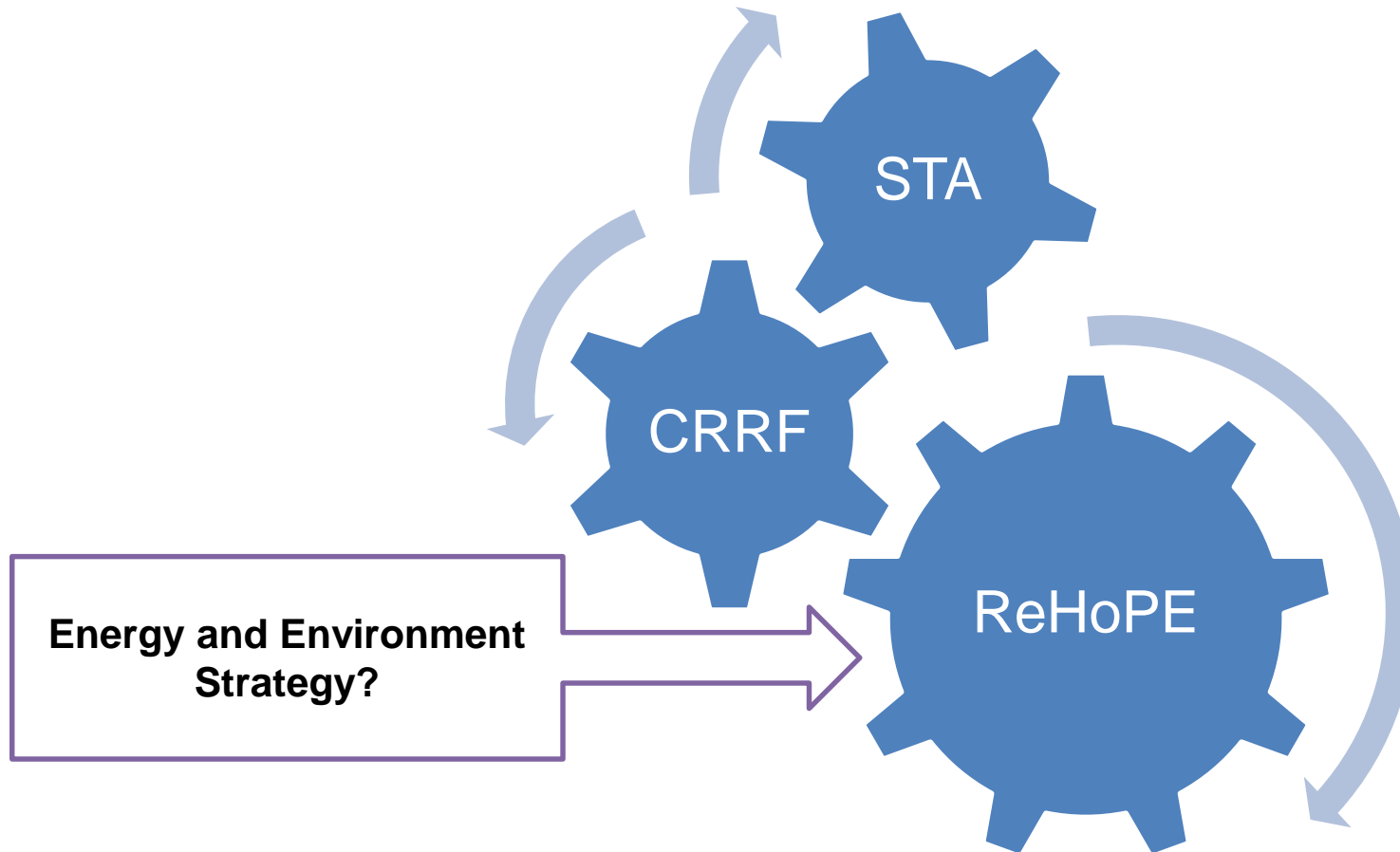
- CRRF & EE TWG
- Strategic Context
- ReHoPE
- Proposed EETWG Response Plan - Results
 - (as synthesized from draft EES and comments received)*
- EE Response Plan Overview*
- Validation and Way Forward

*All new content is subject to review and validation by the TWG, a level best effort was made to provide meaningful content based on existing material for members to comment on and to provide a logical framework upon which to build.

UGANDA: Refugee Response Coordination Structure



Strategic Context



Energy and Environment TWG Mandate



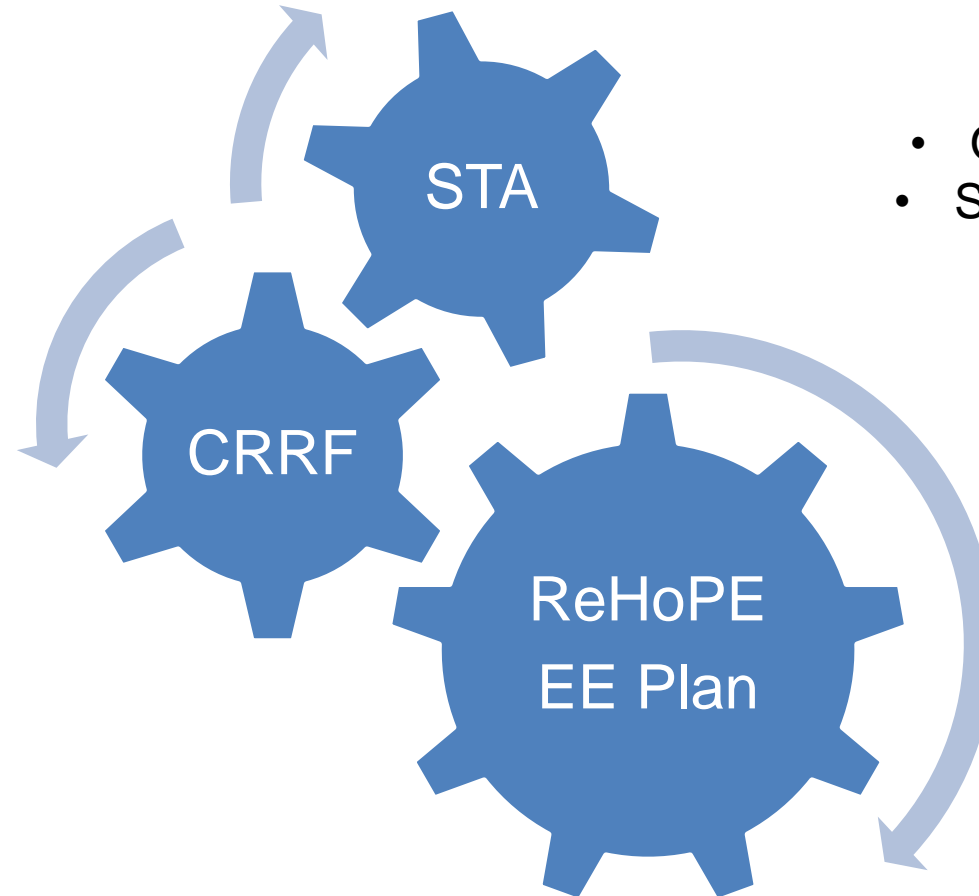
- The mandate for the Energy and Environment TWG is well-anchored in existing strategies:
 - STA Pillars 1, 2, 4 & 5: *Land Management, Sustainable Livelihoods, Environmental Protection, Community Infrastructure*
 - RRP Strategic Priority #6, Objective #3: *Improve environmental conditions in areas of displacement*
 - ReHoPE Strategic Objective #4: *Environmental Degradation in Refugee Hosting Areas Addressed*

Strategic Context

EETWG will take the lead on Objective #4 of the ReHoPE Strategy based on a detailed Response Plan that includes:

- Results
- Strategies
- Outputs
- Indicators
- Actions
- Milestones
- Responsibilities
- Budget

The TWG will validate and enhance the results and indicators in the next revision of the ReHoPE strategy



PROS:

- Operationalize ReHoPE
- Streamline execution and reporting

ReHoPE Objective #4: Environmental Degradation in Refugee Hosting Areas Addressed

ReHoPE Objective #4

ReHoPE Objectives	Results	Intermediate results	Outcome Indicators
Environmental degradation in refugee hosting areas addressed	Improved access to and use of energy saving technologies	-Increased number of energy saving technology development and training centres established	Households using energy saving technologies by type (Number)
			Population trained in the use and maintenance of energy saving technologies % by gender by type (biogas, stoves)
		-Increased number of women and youth are being trained in the development, use and maintenance of energy saving technologies	Population engaged in energy saving technologies as their IGA (% by gender by type)
			Population engaged in tree planting for own use or as their IGA (% by gender)
	Improved environmental management	-Increased level (in number and intensity) of sensitisation/awareness creation campaigns and training of communities, including school children on the importance and sound measures, including provision of incentives for protection of environment	Population with awareness of at least two good environmental management practices (% by gender)

What Does Success Look Like? Proposed Results



- ✓ Environment, wetlands, rivers, aquifers, forests and natural resources are proactively and effectively managed (STA Pillar Environmental Protection)
- Infrastructure and environmental services are delivered sustainably and land is effectively managed (STA Pillars Land Management and Community Infrastructure)
- Settlements and host communities are self-reliant and resilient (STA Pillar Sustainable Livelihood)
- ✓ Safe Access to Sustainable Energy Improved and Deforestation Mitigated (STA Pillar Community Infrastructure)
- Accessible, integrated and current environmental data is monitored and evaluated

✓ ReHoPE Result

Vision	Sound management and sustainable use of Energy & Environment resources for the protection and empowerment of refugee and host communities in Uganda.				
Mission	The CRRF – EETWG will harmonize humanitarian and development responses to plan and implement cross-cutting, proactive and sustainable solutions that foster resilience and mitigate the environmental impacts of refugee settlements on their host communities; To achieve the ReHoPE Objective #4: “Environmental Degradation in Refugee Hosting Areas Addressed”, in line with NDPII, SDPs, STA and the RRP.				
Values	Risk Management	Systems-thinking	Participation	Protection	Accountability
EE Pillars	Environmental Management	Planning and Infrastructure	Livelihood and Resilience	Sustainable Energy	Knowledge Management
Results	Environment, wetlands, rivers, aquifers, forests and natural resources effectively managed	Infrastructure service delivery is sustainable and land is effectively managed	Settlements and host communities are self-reliant and resilient	Safe Access to Sustainable Energy Improved and Deforestation Mitigated	Accessible, integrated and current environmental data is monitored and evaluated
STA Pillars	Environmental Protection Governance and Rule of Law	Community Infrastructure Land Management	Sustainable Livelihoods Peaceful Coexistence	Community Infrastructure Peaceful Coexistence	N/A
Strategies	Apply Best Environmental Management Practices	Adopt integrated, participatory, cross-sector planning, O&M approaches	Expand livelihood and reduce vulnerability to environment hazards and resource-related conflicts	Implement SAFE, nBEST, REDD+ and Renewable Energy Strategies	Utilize standardized inter-agency data management approaches and maintain rationalized indicators
Outputs	<ul style="list-style-type: none"> - Develop and implement overall and settlement ESMPs - Build capacity for Environment at District Level (plans, policies, legislation, programmes, projects and processes) - Ensure all actors respect ESMPs and integrate risk assessment and mitigation measures including reduction of carbon footprint into all interventions - Include environmental criteria in partner selection evaluation 	<ul style="list-style-type: none"> - Identify potential environmental impacts and mitigation measures in each CRRF sub-sector strategy - Adopt master planning approach in refugee settlements and host communities - Produce plans for all settlements conducive to cost-effective access to services, land use management, FSM, energy from waste, water for production etc. - Address land/soil-use exhaustion - Integrate source water protection with WASH projects and O&M - Publish environmentally sound technical standards and guidelines 	<ul style="list-style-type: none"> - Plan interventions that mitigate environmental impacts including climate change, generate livelihood and sustainable economic growth - Perform vulnerability assessments - Enhance assets - Strengthen resource rights - Enhance capacity to manage the environment, - Expand access to sound and locally appropriate technology 	<ul style="list-style-type: none"> - Implement an energy action plan for lighting, cooking, and power needs at household and institutional levels using feasible and appropriate technologies - Standardize cookstoves - Promote energy from waste alternatives - Use best available technology for energy conservation, supply and recovery in new facilities - Retrofit existing facilities - Engage private sector through small grants, innovation challenge funds 	<ul style="list-style-type: none"> - Integrate harmonized M&E protocols linked to key objectives and indicators - Use online information portal to publish all studies and reports - Implement a shared platform and standards for geo-spatial data sharing - Monitor land-use/forest by aerial mapping with regular reporting - Monitoring of groundwater levels - Engage with research partners in a coordinated forum

Way Forward – Before next Meeting



- Finalize TOR for EETWG – Vision, Mission, Values, Results
 - TOR has been updated to use CRRF Standard Template,
 - Most comments previously received have been incorporated
 - **TWG Action: Review and submit final comments**
- Finalize EE Response Plan – Pillars, Results, Strategies, Outputs
 - Integrates most content and comments from EES
 - **TWG Action: Review and submit comments (2 weeks), for approval next month**
 - EE Response Plan is a living document
- Draft Indicators and Targets
- Draft Response Plan including Priorities, Actions, Milestones, Roles & Responsibilities, Risks, Assumptions and Budget
- Merge recommended additional Results and indicators with ReHoPE

