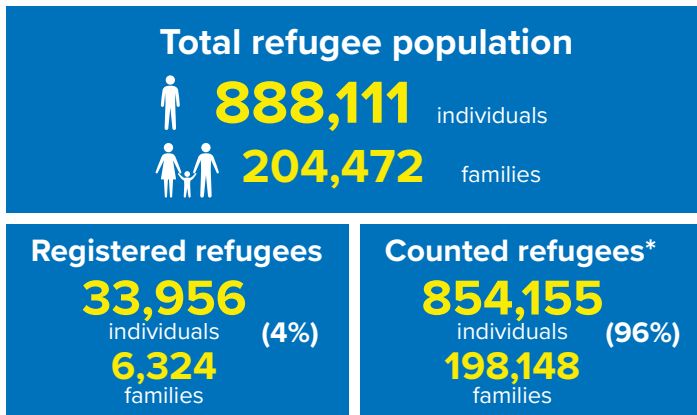
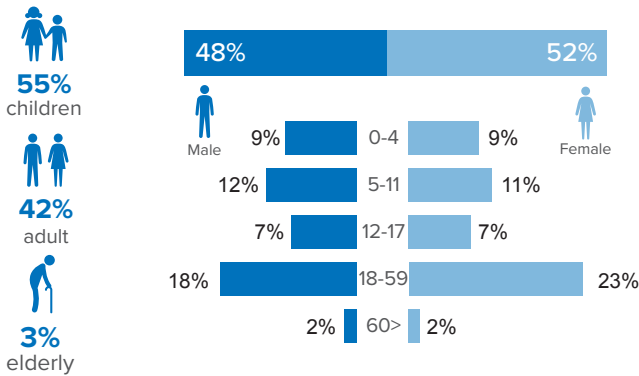


## Refugee population figure

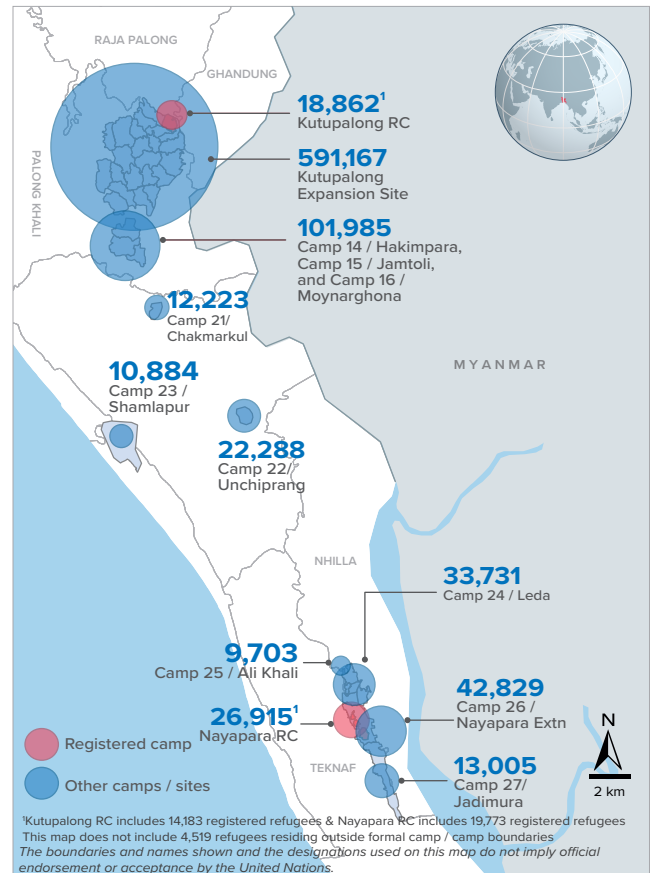


\* Some refugees living in host communities and in certain locations beyond the camp boundaries may not have been counted.

## Demography

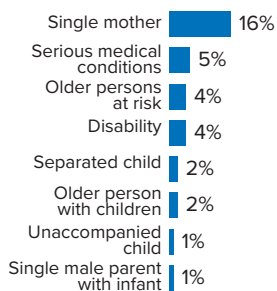


## Refugee population density



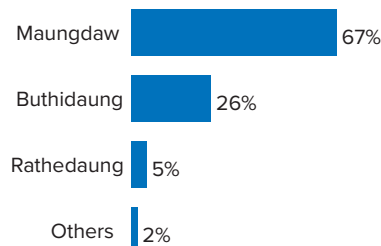
## Specific needs

**31%** of the families have been identified with at least one protection vulnerability\*



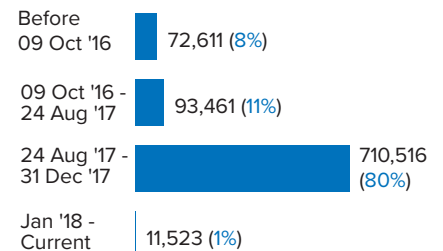
## Place of origin

**67%** of the Rohingya refugees comes from Maungdaw Township



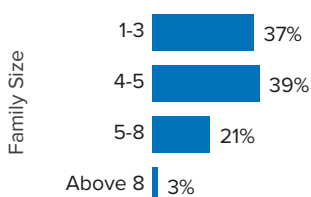
## Period of arrival

**80%** of current population arrived between Aug. and Dec 2017



## Family size breakdown

**39%** of the families have a standard family size of 4-5 persons



## Linking exercise

The Linking Exercise, conducted from December 2017 until February 2018, was a collaborative effort between the Government of Bangladesh and the United Nations High Commissioner for Refugees that aimed to merge the family based Rohingya population data collected through the Family Counting Exercise with attributes of the individual Rohingya population data collected by the Ministry of Home Affairs.

The exercise was conducted with a view to creating a unified dataset with individual data grouped into families which will be used to better protect and assist families.

\*Figures are the percentage of total families with at least one person with a specific need. More than one specific need may be present within one family.

## Age and gender breakdown by camp/site

Camp	Infant female below 1	Infant male below 1	1-4 Children female	1-4 Children male	5-11 Children female	5-11 Children male	12-17 Children female	12-17 Children male	18-59 Adult female	18-59 Adult male	60+ Elderly female	60+ Elderly male	Total Families	Total Individuals
Camp 15	946	893	3,537	3,677	5,282	5,477	3,412	3,596	11,500	9,172	901	905	11,145	49,298
Camp 26	720	647	3,255	3,264	4,930	5,443	3,106	2,915	10,230	7,077	662	580	9,776	42,829
Camp 1W	763	762	2,936	2,952	4,417	4,472	2,688	2,779	9,623	7,737	854	752	9,401	40,735
Camp 13	703	749	3,018	3,110	4,414	4,676	2,714	2,786	9,537	7,573	734	673	9,538	40,687
Camp 1E	659	733	2,782	2,935	4,226	4,447	2,633	2,760	9,260	7,721	789	689	9,130	39,634
Camp 3	687	731	3,025	3,087	4,188	4,411	2,511	2,682	9,341	7,303	684	587	9,113	39,237
Camp 7	711	716	2,974	3,095	4,198	4,424	2,622	2,574	9,109	7,156	714	641	9,253	38,934
Camp 9	622	561	2,771	2,791	3,983	4,038	2,484	2,511	8,531	6,924	715	692	8,642	36,623
Camp 24	513	524	2,290	2,504	4,047	4,169	2,325	2,415	8,043	5,933	547	421	7,804	33,731
Camp 10	645	620	2,610	2,734	3,431	3,781	2,161	2,121	7,822	6,153	610	532	7,709	33,220
Camp 8E	526	523	2,392	2,489	3,555	3,637	2,425	2,358	7,754	6,226	577	579	7,625	33,041
Camp 8W	558	539	2,656	2,600	3,488	3,678	2,069	2,172	7,738	6,167	614	547	7,549	32,826
Camp 11	568	601	2,426	2,468	3,464	3,673	2,196	2,256	7,461	6,103	550	506	7,331	32,272
Camp 14	545	575	2,229	2,471	3,296	3,643	2,221	2,206	7,101	5,707	585	518	6,843	31,097
Camp 4	558	592	2,285	2,447	3,407	3,563	1,962	1,961	7,202	5,629	487	385	7,489	30,478
Camp 2E	534	505	2,182	2,237	3,175	3,443	1,741	1,794	6,908	5,174	505	436	6,878	28,634
Camp 18	484	518	2,281	2,336	2,977	3,090	1,853	1,746	6,621	5,182	364	379	6,799	27,831
Nayapara RC*	87	91	1,580	1,642	2,931	3,037	2,227	2,280	7,169	4,997	457	417	5,734	26,915
Camp 5	450	487	1,997	2,083	2,797	2,859	1,557	1,643	6,055	4,709	458	416	6,136	25,511
Camp 2W	410	409	1,846	1,971	2,834	3,091	1,559	1,572	5,876	4,660	492	372	5,722	25,092
Camp 6	517	447	2,010	2,122	2,703	2,873	1,449	1,549	5,750	4,551	429	388	5,774	24,788
Camp 22	409	384	1,604	1,794	2,560	2,624	1,690	1,681	4,854	3,978	378	332	4,592	22,288
Camp 12	370	356	1,608	1,696	2,357	2,634	1,567	1,528	5,081	3,973	404	353	4,856	21,927
Camp 16	434	396	1,589	1,671	2,328	2,538	1,522	1,438	4,966	4,003	383	322	4,828	21,590
Camp 19	327	314	1,533	1,613	2,153	2,395	1,373	1,412	4,630	3,610	326	281	4,580	19,967
Kutupalong RC*	90	77	1,102	1,260	2,001	2,152	1,510	1,444	4,811	3,838	296	281	3,771	18,862
Camp 17	216	257	1,222	1,219	1,601	1,670	913	901	3,407	2,606	216	209	3,400	14,437
Camp 27	222	194	1,006	1,072	1,545	1,542	925	958	3,010	2,165	198	168	2,891	13,005
Camp 21	227	211	905	959	1,341	1,406	758	801	2,944	2,354	184	133	2,993	12,223
Camp 23	182	200	796	824	1,446	1,472	629	648	2,668	1,689	171	159	2,642	10,884
Camp 25	141	160	725	716	1,133	1,217	760	700	2,254	1,611	172	114	2,185	9,703
Camp 20	81	92	332	387	521	560	246	287	1,165	824	78	67	1,133	4,640
No camp**	76	71	354	375	506	542	280	308	1,046	811	84	66	1,051	4,519
Camp 20 Extension	8	10	48	53	72	79	42	42	151	115	6	7	154	633
Camp 4 Extension	-	1	2	3	1	1	1	2	5	4	-	-	5	20
<b>Total</b>	<b>14,989</b>	<b>14,946</b>	<b>65,908</b>	<b>68,657</b>	<b>97,308</b>	<b>102,757</b>	<b>60,131</b>	<b>60,826</b>	<b>209,623</b>	<b>163,435</b>	<b>15,624</b>	<b>13,907</b>	<b>204,472</b>	<b>888,111</b>

\*Kutupalong RC includes 14,183 registered refugees & Nayapara RC includes 19,773 registered refugees

\*\*This represents refugees residing outside formal camp boundaries

## Population figures by period of arrival

Arrival Period	Before 09 Oct 2016		09 Oct 2016 - 24 Aug 2017		25 Aug 2017 - 31 Dec 2017		01 Jan 2018 - Current date		Total Families	Total Individuals
Camp	Total Families	Total Individuals	Total Families	Total Individuals	Total Families	Total Individuals	Total Families	Total Individuals		
Camp 15	11	47	768	3,405	10,365	45,838	1	8	11,145	49,298
Camp 26	72	352	851	3,797	8,397	36,703	456	1,977	9,776	42,829
Camp 13	11	42	788	3,445	8,738	37,196	1	4	9,538	40,687
Camp 1W	22	86	1,043	4,471	8,316	36,109	20	69	9,401	40,735
Camp 7	121	533	1,057	4,576	8,030	33,638	45	187	9,253	38,934
Camp 1E	33	159	1,608	6,902	7,467	32,494	22	79	9,130	39,634
Camp 3	17	80	951	4,186	8,131	34,909	14	62	9,113	39,237
Camp 9	89	349	2,137	8,695	6,414	27,571	2	8	8,642	36,623
Camp 24	2,181	10,561	527	2,224	5,080	20,894	16	52	7,804	33,731
Camp 10	8	39	605	2,582	7,089	30,574	7	25	7,709	33,220
Camp 8E	38	156	893	3,909	6,677	28,904	17	72	7,625	33,041
Camp 8W	23	106	657	2,864	6,810	29,635	59	221	7,549	32,826
Camp 4	17	81	292	1,201	6,968	28,302	212	894	7,489	30,478
Camp 11	1	3	1,120	4,969	6,209	27,298	1	2	7,331	32,272
Camp 2E	3,225	13,632	1,673	7,073	1,957	7,852	23	77	6,878	28,634
Camp 14	7	25	592	2,745	6,238	28,298	6	29	6,843	31,097
Camp 18	15	63	169	699	6,590	26,978	25	91	6,799	27,831
Camp 5	23	90	541	2,309	5,557	23,056	15	56	6,136	25,511
Camp 6	57	257	1,080	4,867	4,623	19,615	14	49	5,774	24,788
Nayapara RC*	3,752	19,963	252	977	1,694	5,869	36	106	5,734	26,915
Camp 2W	1,833	8,413	1,391	6,058	2,460	10,483	38	138	5,722	25,092
Camp 12	3	15	236	1,074	4,613	20,818	4	20	4,856	21,927
Camp 16	5	25	282	1,249	4,541	20,316	-	-	4,828	21,590
Camp 22	4	31	206	1,001	4,381	21,253	1	3	4,592	22,288
Camp 19	1	4	381	1,723	4,137	17,962	61	278	4,580	19,967
Kutupalong RC*	2,928	15,504	195	770	633	2,540	15	48	3,771	18,862
Camp 17	23	105	136	554	2,148	8,989	1,093	4,789	3,400	14,437
Camp 21	12	53	145	632	2,723	11,118	113	420	2,993	12,223
Camp 27	29	142	259	1,213	2,470	11,041	133	609	2,891	13,005
Camp 23	254	1,171	284	1,210	2,101	8,491	3	12	2,642	10,884
Camp 25	18	90	254	1,133	1,909	8,461	4	19	2,185	9,703
Camp 20	52	236	72	322	865	3,534	144	548	1,133	4,640
No camp**	36	158	136	582	832	3,577	47	202	1,051	4,519
Camp 20 Extension	10	40	13	44	44	180	87	369	154	633
Camp 4 Extension	-	-	-	-	5	20	-	-	5	20
<b>Grand Total</b>	<b>14,931</b>	<b>72,611</b>	<b>21,594</b>	<b>93,461</b>	<b>165,212</b>	<b>710,516</b>	<b>2,735</b>	<b>11,523</b>	<b>204,472</b>	<b>888,111</b>

\*Kutupalong RC includes 14,183 registered refugees & Nayapara RC includes 19,773 registered refugees

\*\*This represents refugees residing outside formal camp boundaries

Creation date: 4 July 2018 Sources: UNHCR Feedback: bgdcoim@unhcr.org

## Population figures by specific needs

Camp	Families with separated children	Families with unaccompanied children	Families with a person with disability	Families with older person at risk	Families with older person at risk with children	Families with people with serious medical condition	Single male parents with infants	Single female parent	Families with people with specific needs
Camp 26	178	55	290	372	115	230	81	2,252	3,345
Camp 15	237	60	353	589	197	463	63	1,612	3,202
Camp 1E	171	43	553	451	325	486	57	1,142	2,899
Nayapara RC	178	41	608	168	51	1,203	35	1,198	2,837
Camp 7	225	29	356	363	244	461	105	1,273	2,782
Camp 1W	164	32	402	450	217	450	66	1,269	2,765
Camp 13	248	79	309	394	208	344	64	1,423	2,751
Camp 3	198	62	375	354	293	332	66	1,422	2,664
Camp 24	177	74	301	289	121	258	43	1,644	2,645
Camp 9	152	75	388	398	268	498	100	1,069	2,548
Camp 10	130	80	400	355	253	530	97	1,065	2,484
Camp 4	241	88	183	292	195	272	100	1,433	2,462
Camp 8E	170	78	366	390	253	434	88	1,113	2,454
Camp 18	157	62	247	228	171	309	83	1,186	2,163
Camp 2E	158	52	256	243	195	312	51	1,168	2,150
Camp 11	176	63	278	305	161	243	69	1,117	2,034
Camp 5	163	72	215	291	171	212	65	1,115	1,995
Camp 14	118	46	184	314	137	305	42	966	1,847
Camp 6	168	45	224	242	127	322	40	818	1,823
Camp 8W	89	38	249	272	160	293	80	747	1,695
Camp 2W	106	18	283	238	112	268	60	791	1,686
Kutupalong RC	60	15	351	106	39	768	10	581	1,596
Camp 19	119	32	184	211	79	116	44	729	1,361
Camp 12	80	34	143	201	104	138	34	772	1,340
Camp 16	92	22	171	201	81	162	37	711	1,322
Camp 22	70	17	159	156	77	154	16	580	1,115
Camp 17	100	19	120	135	69	102	34	617	1,065
Camp 23	50	12	75	96	43	69	11	742	1,010
Camp 27	49	13	93	76	33	49	21	680	945
Camp 21	66	23	109	94	32	108	34	512	895
Camp 25	38	23	75	84	36	87	18	501	766
Camp 20	16	12	61	45	30	49	12	215	385
No camp	23	10	40	57	15	27	9	197	342
Camp 20 Extension	-	1	1	4	1	-	2	23	33
Camp 4 Extension	-	-	1	-	-	-	-	1	1
<b>Total</b>	<b>4,367</b>	<b>1,425</b>	<b>8,403</b>	<b>8,464</b>	<b>4,613</b>	<b>10,054</b>	<b>1,737</b>	<b>32,684</b>	<b>63,407</b>

## Population density by camps in KTP

Using GIS technology, polygons of the camps were established. The GPS coordinates of each family were then mapped into the polygons, in order to determine the total number of families and individuals within each camp.

Based on the high quality drone imagery and field mapping conducted by Site Planning unit, the total usable area and non-usable area was calculated jointly by UNHCR with IOM. While the usable area refers to areas populated by refugees, the non-usable areas refers to flood and landslide prone areas.

**Note:** The recommended minimum surface area is 45 m<sup>2</sup> per person when planning a refugee camp (including kitchen / vegetable gardening space). However the actual surface area per person (excluding garden space) should not be less than 30 m<sup>2</sup> per person.

Camp	Total Families	Total Individuals	Useable area (sqm)	% useable area	Unuseable area (sqm)	Average usable area per person (sqm)
Camp 6	5,774	24,788	15,549.13	4%	346,464.55	0.63
Camp 7	9,253	38,934	187,746.25	26%	526,339.25	4.82
Camp 17	3,400	14,437	105,265.74	12%	773,225.50	7.29
Camp 18	6,799	27,831	215,867.55	29%	535,809.11	7.76
Camp 8W	7,549	32,826	261,919.44	34%	510,261.66	7.98
Camp 2E	6,878	28,634	231,810.44	60%	157,511.49	8.10
Camp 10	7,709	33,220	275,403.52	56%	220,741.93	8.29
Camp 11	7,331	32,272	291,155.08	62%	174,864.36	9.02
Camp 3	9,113	39,237	370,579.30	81%	89,175.01	9.44
Camp 9	8,642	36,623	364,589.86	56%	284,492.95	9.96
Camp 2W	5,722	25,092	251,214.12	63%	147,230.93	10.01
Camp 1W	9,401	40,735	453,408.96	85%	80,984.99	11.13
Camp 4	7,489	30,478	358,275.42	32%	765,423.70	11.76
Camp 5	6,136	25,511	312,596.39	51%	302,700.82	12.25
Camp 8E	7,625	33,041	433,694.96	45%	522,855.70	13.13
Camp 13	9,538	40,687	566,311.36	76%	180,248.89	13.92
Camp 1E	9,130	39,634	608,228.12	96%	25,354.87	15.35
Camp 19	4,580	19,967	340,459.65	48%	373,588.12	17.05
Kutupalong RC*	3,771	18,862	340,824.72	89%	40,514.96	18.07
Camp 12	4,856	21,927	487,402.76	77%	143,735.69	22.23
Camp 20	1,133	4,640	230,466.42	46%	268,065.66	49.67

\*Kutupalong RC includes 14,183 registered refugees