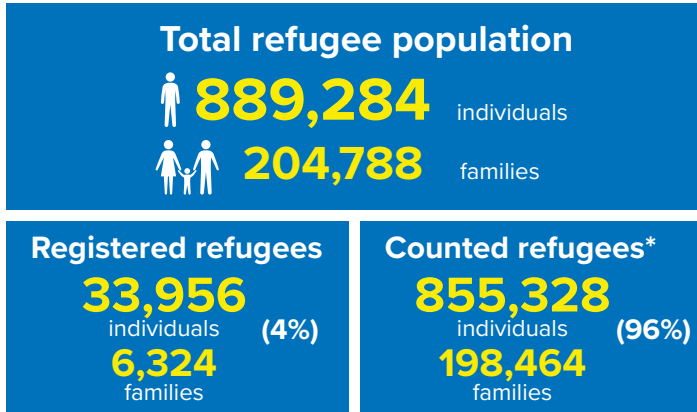
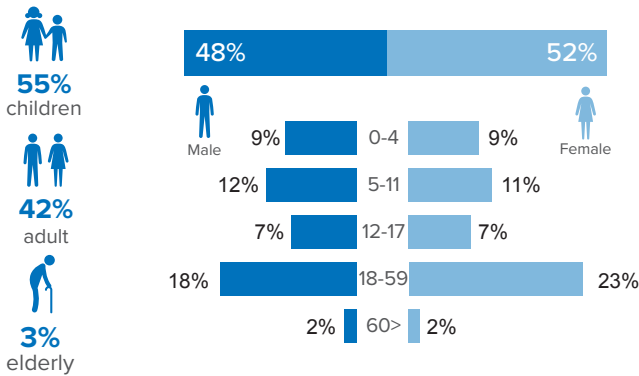


Refugee population figure

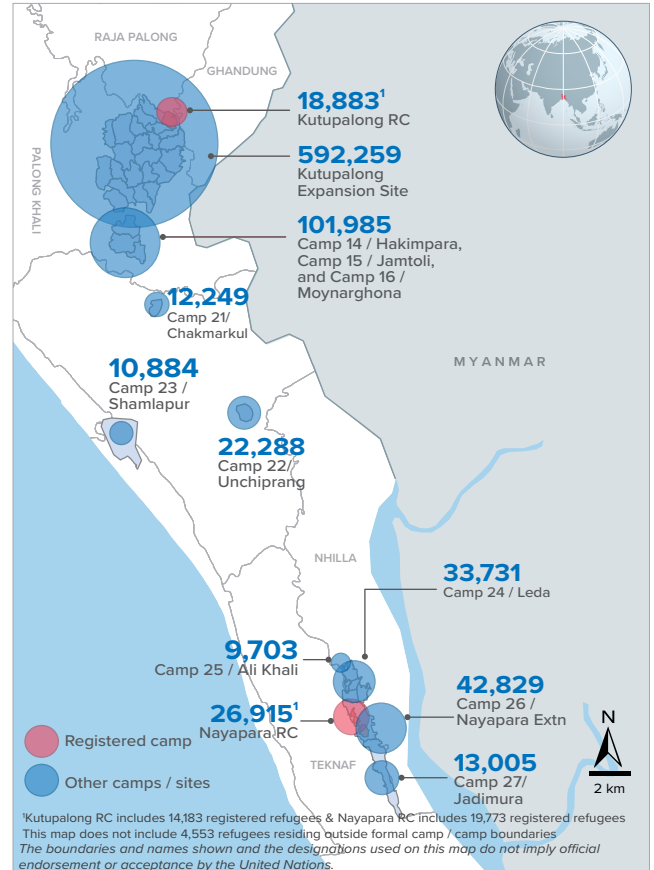


* Some refugees living in host communities and in certain locations beyond the camp boundaries may not have been counted.

Demography

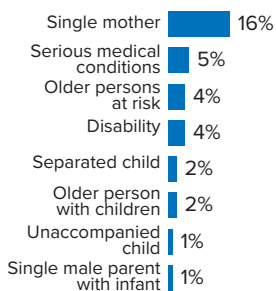


Refugee population density



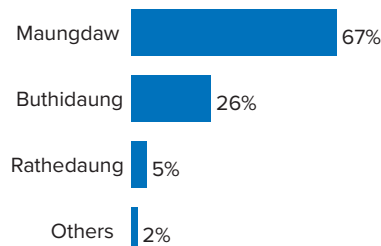
Specific needs

31% of the families have been identified with at least one protection vulnerability*



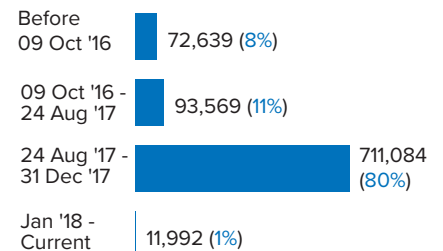
Place of origin

67% of the Rohingya refugees comes from Maungdaw Township



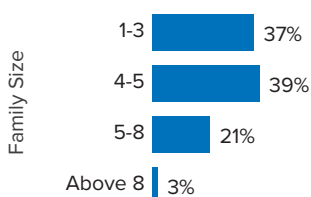
Period of arrival

80% of current population arrived between Aug. and Dec 2017



Family size breakdown

39% of the families have a standard family size of 4-5 persons



Linking exercise

The Linking Exercise, conducted from December 2017 until February 2018, was a collaborative effort between the Government of Bangladesh and the United Nations High Commissioner for Refugees that aimed to merge the family based Rohingya population data collected through the Family Counting Exercise with attributes of the individual Rohingya population data collected by the Ministry of Home Affairs.

The exercise was conducted with a view to creating a unified dataset with individual data grouped into families which will be used to better protect and assist families.

*Figures are the percentage of total families with at least one person with a specific need. More than one specific need may be present within one family.

Age and gender breakdown by camp/site

Camp	Infant female below 1	Infant male below 1	1-4 Children female	1-4 Children male	5-11 Children female	5-11 Children male	12-17 Children female	12-17 Children male	18-59 Adult female	18-59 Adult male	60+ Elderly female	60+ Elderly male	Total Families	Total Individuals
Camp 15	946	893	3,537	3,677	5,282	5,477	3,412	3,596	11,500	9,172	901	905	11,145	49,298
Camp 26	720	647	3,255	3,264	4,930	5,443	3,106	2,915	10,230	7,077	662	580	9,776	42,829
Camp 13	703	749	3,018	3,110	4,414	4,676	2,714	2,786	9,537	7,573	734	673	9,538	40,687
Camp 1W	759	761	2,927	2,947	4,404	4,468	2,684	2,770	9,605	7,719	854	750	9,381	40,648
Camp 1E	657	733	2,784	2,936	4,224	4,446	2,631	2,755	9,253	7,712	789	688	9,122	39,608
Camp 3	687	732	3,025	3,091	4,191	4,413	2,511	2,683	9,346	7,307	684	587	9,118	39,257
Camp 7	702	709	2,961	3,073	4,178	4,394	2,602	2,559	9,028	7,096	707	639	9,188	38,648
Camp 9	622	561	2,771	2,791	3,983	4,038	2,484	2,511	8,531	6,924	715	692	8,642	36,623
Camp 24	513	524	2,290	2,504	4,047	4,169	2,325	2,415	8,043	5,933	547	421	7,804	33,731
Camp 10	645	620	2,612	2,734	3,432	3,781	2,161	2,121	7,823	6,154	610	532	7,710	33,225
Camp 8E	526	523	2,391	2,489	3,553	3,637	2,425	2,358	7,753	6,226	577	578	7,624	33,036
Camp 8W	559	542	2,657	2,607	3,492	3,682	2,070	2,173	7,750	6,177	618	548	7,563	32,875
Camp 11	568	601	2,426	2,468	3,464	3,673	2,196	2,256	7,461	6,103	550	506	7,331	32,272
Camp 14	545	575	2,229	2,471	3,296	3,643	2,221	2,206	7,101	5,707	585	518	6,843	31,097
Camp 4	559	590	2,283	2,446	3,408	3,563	1,961	1,960	7,208	5,634	488	384	7,490	30,484
Camp 2E	536	504	2,189	2,248	3,184	3,452	1,743	1,800	6,930	5,183	506	436	6,900	28,711
Camp 18	484	518	2,281	2,336	2,977	3,090	1,853	1,746	6,621	5,182	364	379	6,799	27,831
Nayapara RC*	87	91	1,580	1,642	2,931	3,037	2,227	2,280	7,169	4,997	457	417	5,734	26,915
Camp 5	446	479	1,980	2,051	2,760	2,826	1,539	1,623	5,975	4,648	453	412	6,054	25,192
Camp 2W	409	410	1,841	1,966	2,836	3,083	1,562	1,568	5,875	4,658	490	371	5,725	25,069
Camp 6	515	446	2,007	2,117	2,695	2,866	1,448	1,544	5,741	4,539	428	388	5,762	24,734
Camp 22	409	384	1,604	1,794	2,560	2,624	1,690	1,681	4,854	3,978	378	332	4,592	22,288
Camp 12	370	356	1,606	1,696	2,356	2,633	1,567	1,528	5,080	3,973	404	353	4,855	21,922
Camp 16	434	396	1,589	1,671	2,328	2,538	1,522	1,438	4,966	4,003	383	322	4,828	21,590
Camp 19	330	316	1,548	1,627	2,168	2,408	1,380	1,425	4,679	3,653	334	281	4,633	20,149
Kutupalong RC*	92	78	1,103	1,262	2,005	2,152	1,510	1,445	4,818	3,841	296	281	3,779	18,883
Camp 17	223	260	1,243	1,236	1,625	1,702	921	916	3,466	2,645	219	213	3,458	14,669
Camp 27	222	194	1,006	1,072	1,545	1,542	925	958	3,010	2,165	198	168	2,891	13,005
Camp 21	227	212	907	962	1,344	1,408	759	801	2,952	2,360	184	133	3,001	12,249
Camp 23	182	200	796	824	1,446	1,472	629	648	2,668	1,689	171	159	2,642	10,884
Camp 25	141	160	725	716	1,133	1,217	760	700	2,254	1,611	172	114	2,185	9,703
Camp 20	81	92	333	388	521	561	248	288	1,168	826	78	67	1,136	4,651
Camp 4 Extension	22	22	64	92	114	112	53	63	246	186	18	12	241	1,004
Camp 20 Extension	12	14	73	70	118	120	58	57	240	187	7	8	239	964
No camp**	76	72	356	379	510	546	280	310	1,056	818	84	66	1,059	4,553
Total	15,009	14,964	65,997	68,757	97,454	102,892	60,177	60,883	209,937	163,656	15,645	13,913	204,788	889,284

*Kutupalong RC includes 14,183 registered refugees & Nayapara RC includes 19,773 registered refugees

**This represents refugees residing outside formal camp boundaries

Population figures by period of arrival

Arrival Period	Before 09 Oct 2016		09 Oct 2016 - 24 Aug 2017		25 Aug 2017 - 31 Dec 2017		01 Jan 2018 - Current date		Total Families	Total Individuals
Camp	Total Families	Total Individuals	Total Families	Total Individuals	Total Families	Total Individuals	Total Families	Total Individuals		
Camp 15	11	47	768	3,405	10,365	45,838	1	8	11,145	49,298
Camp 26	72	352	851	3,797	8,397	36,703	456	1,977	9,776	42,829
Camp 13	11	42	788	3,445	8,738	37,196	1	4	9,538	40,687
Camp 1W	22	86	1,040	4,457	8,299	36,036	20	69	9,381	40,648
Camp 1E	33	159	1,609	6,910	7,457	32,454	23	85	9,122	39,608
Camp 3	17	80	951	4,186	8,133	34,917	17	74	9,118	39,257
Camp 7	120	525	1,058	4,581	7,961	33,337	49	205	9,188	38,648
Camp 9	89	349	2,137	8,695	6,414	27,571	2	8	8,642	36,623
Camp 24	2,181	10,561	527	2,224	5,080	20,894	16	52	7,804	33,731
Camp 10	8	39	605	2,582	7,090	30,579	7	25	7,710	33,225
Camp 8E	38	156	893	3,909	6,676	28,899	17	72	7,624	33,036
Camp 8W	23	106	657	2,864	6,822	29,678	61	227	7,563	32,875
Camp 11	1	3	1,120	4,969	6,209	27,298	1	2	7,331	32,272
Camp 14	7	25	592	2,745	6,238	28,298	6	29	6,843	31,097
Camp 4	17	81	289	1,193	6,969	28,298	215	912	7,490	30,484
Camp 2E	3,226	13,638	1,675	7,081	1,974	7,908	25	84	6,900	28,711
Camp 18	15	63	169	699	6,590	26,978	25	91	6,799	27,831
Nayapara RC*	3,752	19,963	252	977	1,694	5,869	36	106	5,734	26,915
Camp 5	23	90	534	2,270	5,481	22,773	16	59	6,054	25,192
Camp 2W	1,832	8,405	1,393	6,060	2,459	10,461	41	143	5,725	25,069
Camp 6	57	257	1,078	4,856	4,614	19,575	13	46	5,762	24,734
Camp 22	4	31	206	1,001	4,381	21,253	1	3	4,592	22,288
Camp 12	3	15	236	1,074	4,612	20,813	4	20	4,855	21,922
Camp 16	5	25	282	1,249	4,541	20,316			4,828	21,590
Camp 19	1	4	387	1,757	4,170	18,062	75	326	4,633	20,149
Kutupalong RC*	2,928	15,504	195	770	640	2,560	16	49	3,779	18,883
Camp 17	24	109	145	591	2,182	9,127	1,107	4,842	3,458	14,669
Camp 27	29	142	259	1,213	2,470	11,041	133	609	2,891	13,005
Camp 21	12	53	145	632	2,726	11,129	118	435	3,001	12,249
Camp 23	254	1,171	284	1,210	2,101	8,491	3	12	2,642	10,884
Camp 25	18	90	254	1,133	1,909	8,461	4	19	2,185	9,703
Camp 20	52	236	74	330	866	3,537	144	548	1,136	4,651
Camp 4 Extension	3	17	16	78	220	899	2	10	241	1,004
Camp 20 Extension	12	49	13	44	61	243	153	628	239	964
No camp**	37	166	136	582	836	3,592	50	213	1,059	4,553
Grand Total	14,937	72,639	21,618	93,569	165,375	711,084	2,858	11,992	204,788	889,284

*Kutupalong RC includes 14,183 registered refugees & Nayapara RC includes 19,773 registered refugees

**This represents refugees residing outside formal camp boundaries

Creation date: 17 July 2018 Sources: UNHCR Feedback: bgdcoim@unhcr.org

Population figures by specific needs

Camp	Families with separated children	Families with unaccompanied children	Families with a person with disability	Families with older person at risk	Families with older person at risk with children	Families with people with serious medical condition	Single male parents with infants	Single female parent	Families with people with specific needs
Camp 26	178	55	290	372	115	230	81	2,252	3,345
Camp 15	237	60	353	589	197	463	63	1,612	3,202
Camp 1E	171	43	553	451	324	486	57	1,142	2,899
Nayapara RC	178	41	608	168	51	1,203	35	1,198	2,837
Camp 7	224	28	352	362	244	458	104	1,259	2,771
Camp 1W	164	32	399	448	217	449	65	1,264	2,760
Camp 13	248	79	309	394	208	344	64	1,423	2,751
Camp 3	198	62	375	354	293	332	66	1,422	2,665
Camp 24	177	74	301	289	121	258	43	1,644	2,645
Camp 9	152	75	388	398	268	498	100	1,069	2,548
Camp 10	130	80	400	355	253	530	97	1,065	2,484
Camp 4	240	87	183	291	194	272	100	1,431	2,462
Camp 8E	170	78	366	390	252	434	88	1,113	2,453
Camp 18	157	62	247	228	171	309	83	1,186	2,163
Camp 2E	158	52	256	243	195	312	50	1,167	2,158
Camp 11	176	63	278	305	161	243	69	1,117	2,034
Camp 5	161	70	210	288	167	210	63	1,095	1,961
Camp 14	118	46	184	314	137	305	42	966	1,847
Camp 6	167	45	224	242	126	320	39	818	1,820
Camp 8W	89	38	249	272	160	293	80	747	1,698
Camp 2W	106	18	283	237	112	264	60	790	1,689
Kutupalong RC	60	15	351	106	39	768	10	581	1,598
Camp 19	119	32	184	211	79	116	44	729	1,375
Camp 12	80	34	143	201	104	138	34	771	1,339
Camp 16	92	22	171	201	81	162	37	711	1,322
Camp 22	70	17	159	156	77	154	16	580	1,115
Camp 17	99	19	121	135	71	103	34	617	1,083
Camp 23	50	12	75	96	43	69	11	742	1,010
Camp 27	49	13	93	76	33	49	21	680	945
Camp 21	66	23	109	94	32	108	35	512	900
Camp 25	38	23	75	84	36	87	18	501	766
Camp 20	17	12	61	45	30	49	12	216	388
Camp 4 Extension	5	4	12	8	6	11	5	43	81
Camp 20 Extension	-	1	1	4	1	-	2	23	54
No camp	23	10	40	57	15	27	9	198	345
Total	4,367	1,425	8,403	8,464	4,613	10,054	1,737	32,684	63,513

Population density by camps in KTP

Using GIS technology, polygons of the camps were established. The GPS coordinates of each family were then mapped into the polygons, in order to determine the total number of families and individuals within each camp.

Based on the high quality drone imagery and field mapping conducted by Site Planning unit, the total usable area and non-usable area was calculated jointly by UNHCR with IOM. While the usable area refers to areas populated by refugees, the non-usable areas refers to flood and landslide prone areas.

Note: The recommended minimum surface area is 45 m² per person when planning a refugee camp (including kitchen / vegetable gardening space). However the actual surface area per person (excluding garden space) should not be less than 30 m² per person.

Camp	Total Families	Total Individuals	Useable area (sqm)	% useable area	Unuseable area (sqm)	Average usable area per person (sqm)
Camp 6	5,762	24,734	15,549.13	4%	346,464.55	0.63
Camp 7	9,188	38,648	187,746.25	26%	526,339.25	4.86
Camp 17	3,458	14,669	105,265.74	12%	773,225.50	7.18
Camp 18	6,799	27,831	215,867.55	29%	535,809.11	7.76
Camp 8W	7,563	32,875	261,919.44	34%	510,261.66	7.97
Camp 2E	6,900	28,711	231,810.44	60%	157,511.49	8.07
Camp 10	7,710	33,225	275,403.52	56%	220,741.93	8.29
Camp 11	7,331	32,272	291,155.08	62%	174,864.36	9.02
Camp 3	9,118	39,257	370,579.30	81%	89,175.01	9.44
Camp 9	8,642	36,623	364,589.86	56%	284,492.95	9.96
Camp 2W	5,725	25,069	251,214.12	63%	147,230.93	10.02
Camp 1W	9,381	40,648	453,408.96	85%	80,984.99	11.15
Camp 4	7,490	30,484	358,275.42	32%	765,423.70	11.75
Camp 5	6,054	25,192	312,596.39	51%	302,700.82	12.41
Camp 8E	7,624	33,036	433,694.96	45%	522,855.70	13.13
Camp 13	9,538	40,687	566,311.36	76%	180,248.89	13.92
Camp 1E	9,122	39,608	608,228.12	96%	25,354.87	15.36
Camp 19	4,633	20,149	340,459.65	48%	373,588.12	16.90
Kutupalong RC*	3,779	18,883	340,824.72	89%	40,514.96	18.05
Camp 12	4,855	21,922	487,402.76	77%	143,735.69	22.23
Camp 20	1,136	4,651	230,466.42	46%	268,065.66	49.55

*Kutupalong RC includes 14,183 registered refugees