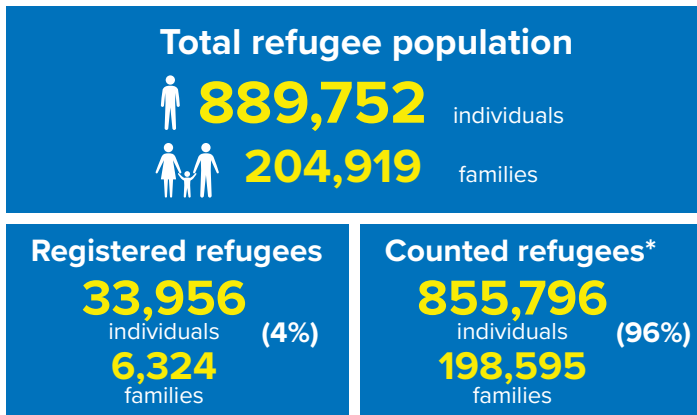
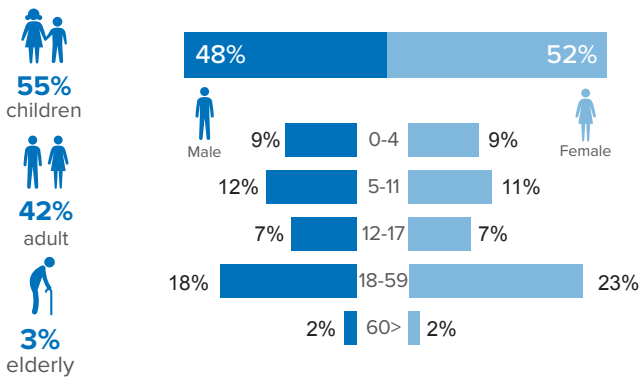


## Refugee population figure

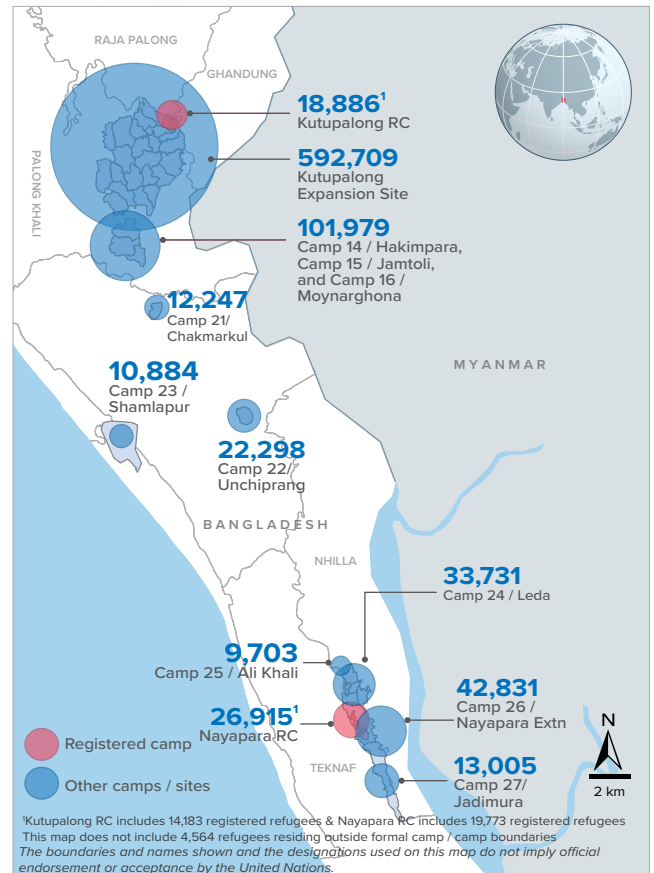


\* Some refugees living in host communities and in certain locations beyond the camp boundaries may not have been counted.

## Demography

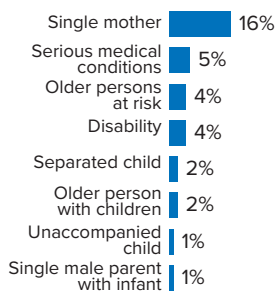


## Refugee population density



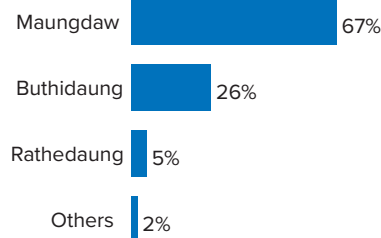
## Specific needs

**31%** of the families have been identified with at least one protection vulnerability\*



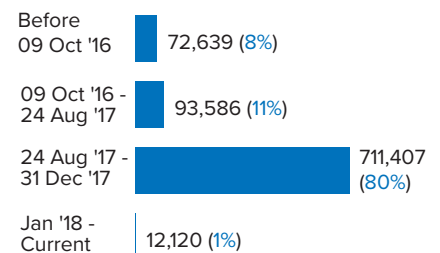
## Place of origin

**67%** of the Rohingya refugees comes from Maungdaw Township



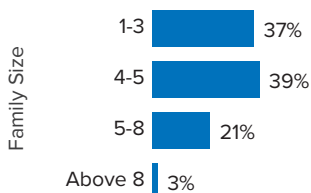
## Period of arrival

**80%** of current population arrived between Aug. and Dec 2017



## Family size breakdown

**39%** of the families have a standard family size of 4-5 persons



## Linking exercise

The Linking Exercise, conducted from December 2017 until February 2018, was a collaborative effort between the Government of Bangladesh and the United Nations High Commissioner for Refugees that aimed to merge the family based Rohingya population data collected through the Family Counting Exercise with attributes of the individual Rohingya population data collected by the Ministry of Home Affairs.

The exercise was conducted with a view to creating a unified dataset with individual data grouped into families which will be used to better protect and assist families.

\*Figures are the percentage of total families with at least one person with a specific need. More than one specific need may be present within one family.

## Age and gender breakdown by camp/site

Camp	Infant female below 1	Infant male below 1	1-4 Children female	1-4 Children male	5-11 Children female	5-11 Children male	12-17 Children female	12-17 Children male	18-59 Adult female	18-59 Adult male	60+ Elderly female	60+ Elderly male	Total Families	Total Individuals
Camp 15	946	893	3,537	3,677	5,282	5,477	3,412	3,596	11,500	9,172	901	905	11,145	49,298
Camp 26	720	647	3,255	3,264	4,930	5,443	3,107	2,915	10,230	7,077	662	581	9,777	42,831
Camp 13	703	749	3,020	3,114	4,419	4,680	2,715	2,787	9,545	7,578	734	673	9,546	40,717
Camp 1W	759	759	2,925	2,939	4,404	4,468	2,680	2,769	9,593	7,709	855	747	9,370	40,607
Camp 1E	657	731	2,781	2,933	4,221	4,443	2,630	2,755	9,243	7,702	787	688	9,110	39,571
Camp 3	686	729	3,022	3,086	4,182	4,410	2,508	2,681	9,327	7,298	685	584	9,103	39,198
Camp 7	696	708	2,948	3,059	4,163	4,364	2,591	2,551	8,992	7,068	707	639	9,149	38,486
Camp 9	622	561	2,771	2,791	3,983	4,038	2,484	2,511	8,531	6,924	715	692	8,642	36,623
Camp 24	513	524	2,290	2,504	4,047	4,169	2,325	2,415	8,043	5,933	547	421	7,804	33,731
Camp 10	645	619	2,610	2,731	3,430	3,772	2,157	2,117	7,812	6,146	608	530	7,698	33,177
Camp 8E	525	523	2,387	2,488	3,550	3,632	2,425	2,354	7,744	6,219	577	576	7,616	33,000
Camp 8W	558	543	2,664	2,615	3,499	3,688	2,071	2,179	7,769	6,191	618	549	7,582	32,944
Camp 11	568	600	2,425	2,466	3,462	3,671	2,196	2,255	7,458	6,101	550	506	7,328	32,258
Camp 14	545	575	2,229	2,471	3,296	3,643	2,221	2,206	7,101	5,707	585	518	6,843	31,097
Camp 4	560	591	2,286	2,450	3,412	3,563	1,962	1,960	7,214	5,638	488	384	7,497	30,508
Camp 2E	537	504	2,193	2,248	3,186	3,457	1,744	1,801	6,939	5,196	508	436	6,912	28,749
Camp 18	483	517	2,278	2,323	2,971	3,081	1,849	1,740	6,603	5,168	364	379	6,781	27,756
Nayapara RC*	87	91	1,580	1,642	2,931	3,037	2,227	2,280	7,169	4,997	457	417	5,734	26,915
Camp 5	444	478	1,975	2,050	2,752	2,820	1,536	1,619	5,960	4,635	453	412	6,039	25,134
Camp 2W	410	409	1,842	1,965	2,840	3,086	1,562	1,568	5,876	4,658	490	372	5,729	25,078
Camp 6	515	447	2,006	2,116	2,688	2,861	1,450	1,538	5,730	4,526	427	385	5,750	24,689
Camp 22	410	384	1,604	1,797	2,560	2,626	1,690	1,681	4,856	3,980	378	332	4,594	22,298
Camp 12	370	356	1,604	1,695	2,355	2,631	1,565	1,528	5,079	3,972	404	353	4,853	21,912
Camp 16	434	396	1,587	1,670	2,327	2,538	1,522	1,438	4,965	4,002	383	322	4,827	21,584
Camp 19	330	316	1,548	1,627	2,168	2,408	1,380	1,425	4,679	3,653	334	281	4,633	20,149
Kutupalong RC*	92	78	1,103	1,262	2,006	2,153	1,510	1,445	4,819	3,841	296	281	3,780	18,886
Camp 17	223	260	1,246	1,240	1,628	1,709	924	918	3,475	2,651	219	214	3,467	14,707
Camp 27	222	194	1,006	1,072	1,545	1,542	925	958	3,010	2,165	198	168	2,891	13,005
Camp 21	227	213	908	963	1,346	1,405	757	800	2,952	2,359	183	134	2,999	12,247
Camp 23	182	200	796	824	1,446	1,472	629	648	2,668	1,689	171	159	2,642	10,884
Camp 25	141	160	725	716	1,133	1,217	760	700	2,254	1,611	172	114	2,185	9,703
Camp 20	81	92	333	388	521	561	248	288	1,168	826	78	67	1,136	4,651
Camp 4 Extension	35	34	108	151	182	189	85	95	405	310	25	23	404	1,642
Camp 20 Extension	14	15	84	90	131	147	66	72	286	227	10	11	289	1,153
No camp**	76	71	355	379	508	550	282	311	1,059	821	86	66	1,064	4,564
<b>Total</b>	<b>15,016</b>	<b>14,967</b>	<b>66,031</b>	<b>68,806</b>	<b>97,504</b>	<b>102,951</b>	<b>60,195</b>	<b>60,904</b>	<b>210,054</b>	<b>163,750</b>	<b>15,655</b>	<b>13,919</b>	<b>204,919</b>	<b>889,752</b>

\*Kutupalong RC includes 14,183 registered refugees & Nayapara RC includes 19,773 registered refugees

\*\*This represents refugees residing outside formal camp boundaries

## Population figures by period of arrival

Arrival Period	Before 09 Oct 2016		09 Oct 2016 - 24 Aug 2017		25 Aug 2017 - 31 Dec 2017		01 Jan 2018 - Current date		Total Families	Total Individuals
Camp	Total Families	Total Individuals	Total Families	Total Individuals	Total Families	Total Individuals	Total Families	Total Individuals		
Camp 15	11	47	768	3,405	10,365	45,838	1	8	11,145	49,298
Camp 26	72	352	851	3,797	8,397	36,703	457	1,979	9,777	42,831
Camp 13	11	42	788	3,445	8,738	37,196	9	34	9,546	40,717
Camp 1W	21	84	1,040	4,457	8,288	35,996	21	70	9,370	40,607
Camp 7	119	524	1,058	4,581	7,922	33,173	50	208	9,149	38,486
Camp 1E	33	159	1,606	6,899	7,447	32,426	24	87	9,110	39,571
Camp 3	17	80	951	4,186	8,113	34,839	22	93	9,103	39,198
Camp 9	89	349	2,137	8,695	6,414	27,571	2	8	8,642	36,623
Camp 24	2,181	10,561	527	2,224	5,080	20,894	16	52	7,804	33,731
Camp 10	8	39	605	2,582	7,078	30,531	7	25	7,698	33,177
Camp 8E	38	156	891	3,897	6,669	28,874	18	73	7,616	33,000
Camp 8W	23	106	657	2,864	6,841	29,747	61	227	7,582	32,944
Camp 4	17	81	289	1,193	6,973	28,312	218	922	7,497	30,508
Camp 11	1	3	1,120	4,969	6,206	27,284	1	2	7,328	32,258
Camp 2E	3,226	13,638	1,675	7,083	1,983	7,938	28	90	6,912	28,749
Camp 14	7	25	592	2,745	6,238	28,298	6	29	6,843	31,097
Camp 18	15	63	169	699	6,572	26,903	25	91	6,781	27,756
Camp 5	23	90	534	2,270	5,466	22,715	16	59	6,039	25,134
Camp 6	57	257	1,075	4,844	4,605	19,542	13	46	5,750	24,689
Nayapara RC*	3,752	19,963	252	977	1,694	5,869	36	106	5,734	26,915
Camp 2W	1,832	8,405	1,395	6,068	2,460	10,460	42	145	5,729	25,078
Camp 12	3	15	236	1,074	4,610	20,803	4	20	4,853	21,912
Camp 16	5	25	281	1,243	4,541	20,316	-	-	4,827	21,584
Camp 19	1	4	387	1,757	4,170	18,062	75	326	4,633	20,149
Camp 22	4	31	206	1,001	4,381	21,253	3	13	4,594	22,298
Kutupalong RC*	2,928	15,504	196	773	640	2,560	16	49	3,780	18,886
Camp 17	24	109	145	591	2,190	9,161	1,108	4,846	3,467	14,707
Camp 21	12	53	144	626	2,726	11,135	117	433	2,999	12,247
Camp 27	29	142	259	1,213	2,470	11,041	133	609	2,891	13,005
Camp 23	254	1,171	284	1,210	2,101	8,491	3	12	2,642	10,884
Camp 25	18	90	254	1,133	1,909	8,461	4	19	2,185	9,703
Camp 20	52	236	74	330	866	3,537	144	548	1,136	4,651
Camp 4 Extension	5	20	24	111	373	1,501	2	10	404	1,642
Camp 20 Extension	12	49	15	56	99	384	163	664	289	1,153
No camp**	37	166	137	588	838	3,593	52	217	1,064	4,564
<b>Grand Total</b>	<b>14,937</b>	<b>72,639</b>	<b>21,622</b>	<b>93,586</b>	<b>165,463</b>	<b>711,407</b>	<b>2,897</b>	<b>12,120</b>	<b>204,919</b>	<b>889,752</b>

\*Kutupalong RC includes 14,183 registered refugees & Nayapara RC includes 19,773 registered refugees

\*\*This represents refugees residing outside formal camp boundaries

Creation date: 31 July 2018 Sources: UNHCR Feedback: bgdcoim@unhcr.org

## Population figures by specific needs

Camp	Families with separated children	Families with unaccompanied children	Families with a person with disability	Families with older person at risk	Families with older person at risk with children	Families with people with serious medical condition	Single male parents with infants	Single female parent	Families with people with specific needs
Camp 26	178	55	290	372	115	230	81	2,252	3,345
Camp 15	237	60	353	589	197	463	63	1,612	3,202
Camp 1E	170	42	552	451	322	485	57	1,139	2,893
Nayapara RC	178	41	608	168	51	1,203	35	1,198	2,837
Camp 7	221	28	352	361	243	456	104	1,255	2,764
Camp 1W	164	32	397	446	217	449	65	1,264	2,758
Camp 13	248	79	309	394	208	344	64	1,423	2,757
Camp 3	198	62	375	355	291	332	66	1,415	2,659
Camp 24	177	74	301	289	121	258	43	1,644	2,645
Camp 9	152	75	388	398	268	498	100	1,069	2,548
Camp 10	129	79	398	353	253	526	97	1,065	2,477
Camp 4	240	87	182	291	194	272	100	1,432	2,464
Camp 8E	170	78	363	390	252	432	88	1,112	2,450
Camp 2E	158	52	256	243	195	312	50	1,167	2,163
Camp 18	157	62	247	228	171	309	83	1,184	2,161
Camp 11	176	63	277	305	161	242	69	1,116	2,032
Camp 5	161	70	209	288	167	210	62	1,093	1,957
Camp 14	118	46	184	314	137	305	42	966	1,847
Camp 6	167	45	223	242	125	318	39	817	1,818
Camp 8W	89	38	249	272	160	293	80	747	1,705
Camp 2W	106	18	283	237	112	264	60	790	1,693
Kutupalong RC	60	15	351	106	39	768	10	581	1,598
Camp 19	119	32	184	211	79	116	44	729	1,375
Camp 12	80	34	143	201	104	138	32	770	1,337
Camp 16	92	22	171	201	81	162	37	711	1,322
Camp 22	70	17	159	156	77	154	16	580	1,115
Camp 17	99	19	122	135	71	104	36	619	1,087
Camp 23	50	12	75	96	43	69	11	742	1,010
Camp 27	49	13	93	76	33	49	21	680	945
Camp 21	66	23	109	95	32	108	35	509	898
Camp 25	38	23	75	84	36	87	18	501	766
Camp 20	17	12	61	45	30	49	12	216	388
Camp 4 Extension	9	5	19	11	12	16	6	62	123
Camp 20 Extension	1	2	5	5	1	6	2	23	73
No camp	23	10	40	56	15	27	9	201	348
<b>Total</b>	<b>4,367</b>	<b>1,425</b>	<b>8,403</b>	<b>8,464</b>	<b>4,613</b>	<b>10,054</b>	<b>1,737</b>	<b>32,684</b>	<b>63,560</b>