

SOUTH SUDAN SITUATION

Regional overview of population of concern

as of 31 July 2018



KEY FIGURES



4.63 MILLION
POPULATION OF CONCERN

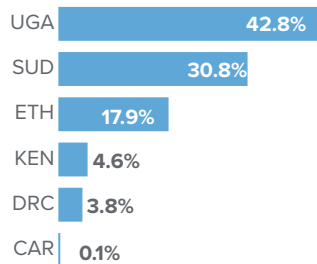
2.49 million

TOTAL REFUGEES
FROM SOUTH SUDAN

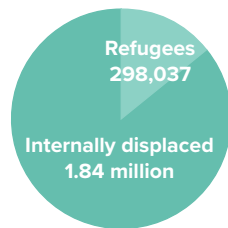
2.13 million

POP. OF CONCERN
IN SOUTH SUDAN

BY COUNTRY OF ASYLUM



BY POP. OF CONCERN



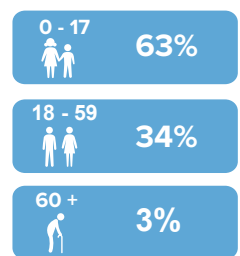
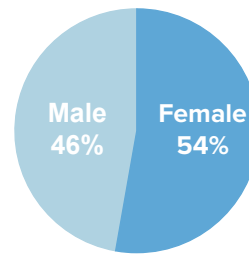
USD 782.7 million requested

USD 100.3 million received (13%)

by UNHCR in 2018 for the South Sudan situation (as of 31 July)

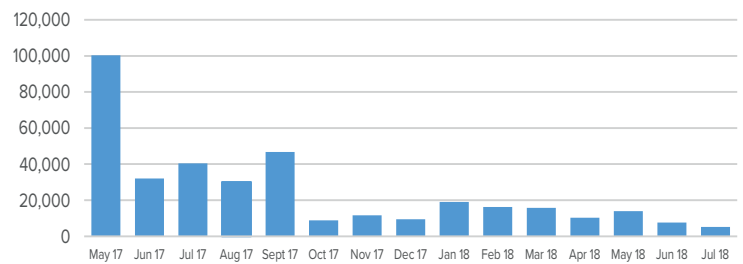
REGIONAL AGE & SEX COMPOSITION

South Sudanese Refugees



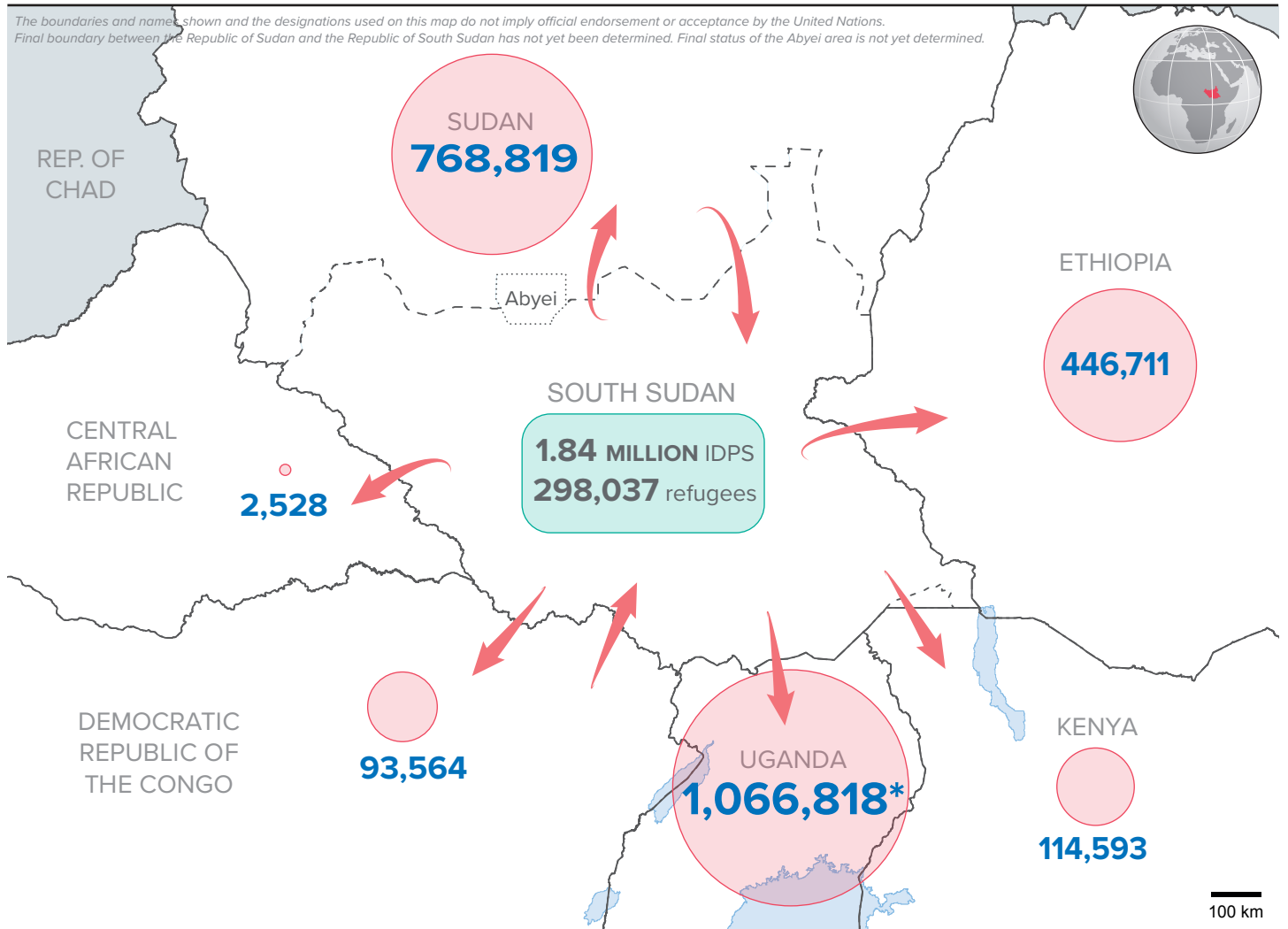
REGIONAL ARRIVALS BY MONTH

South Sudanese Refugees



2018 arrivals (1 Jan - 31 July): 88,115

based on field reports, UNHCR and Government registration



Date: 31 July 2018 Source: UNHCR, OCHA, Government Feedback: mckierna@unhcr.org

*As of 30 June, biometrically registered in the Refugee Information Management System (Government - OPM)