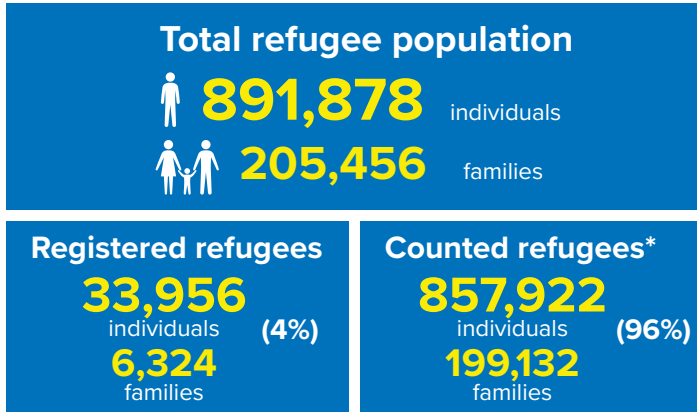
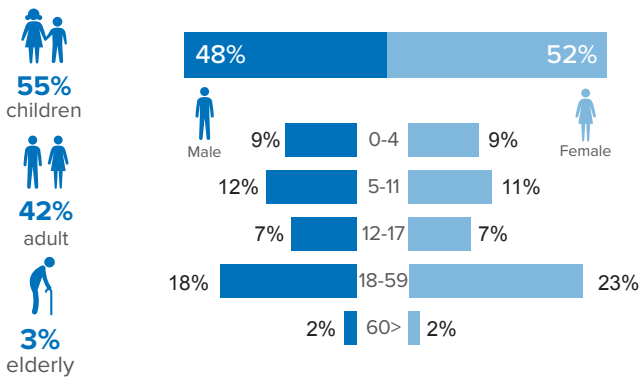


Refugee population figure

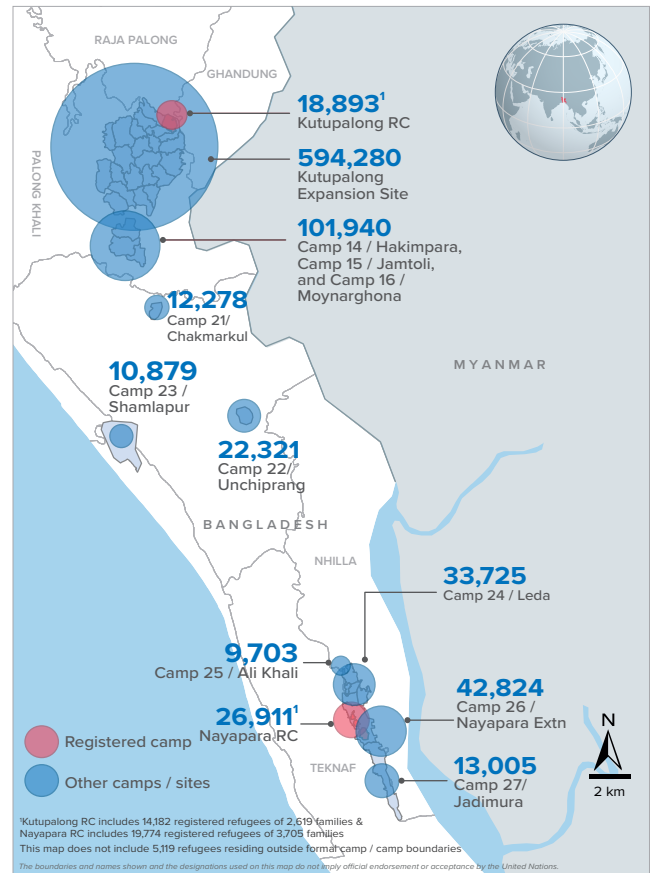


* Some refugees living in host communities and in certain locations beyond the camp boundaries may not have been counted.

Demography

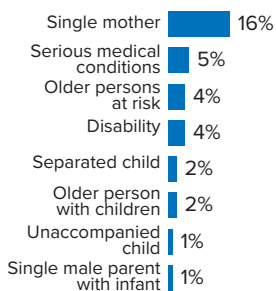


Refugee population density



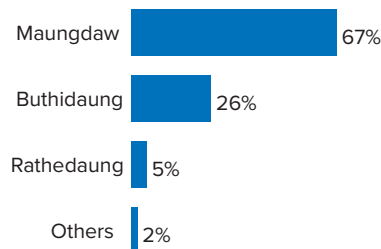
Specific needs

31% of the families have been identified with at least one protection vulnerability*



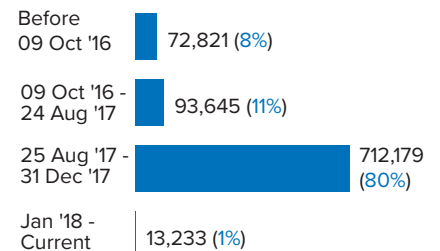
Place of origin

67% of the Rohingya refugees comes from Maungdaw Township



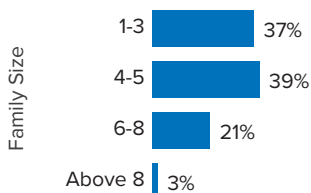
Period of arrival

80% of current population arrived between Aug. and Dec 2017



Family size breakdown

39% of the families have a standard family size of 4-5 persons



Linking exercise

The Linking Exercise, conducted from December 2017 until February 2018, was a collaborative effort between the Government of Bangladesh and the United Nations High Commissioner for Refugees that aimed to merge the family based Rohingya population data collected through the Family Counting Exercise with attributes of the individual Rohingya population data collected by the Ministry of Home Affairs.

The exercise was conducted with a view to creating a unified dataset with individual data grouped into families which will be used to better protect and assist families.

*Figures are the percentage of total families with at least one person with a specific need. More than one specific need may be present within one family.

Age and gender breakdown by camp/site

Camp	Infant female below 1	Infant male below 1	1-4 Children female	1-4 Children male	5-11 Children female	5-11 Children male	12-17 Children female	12-17 Children male	18-59 Adult female	18-59 Adult male	60+ Elderly female	60+ Elderly male	Total Families	Total Individuals
Camp 15	946	893	3,537	3,677	5,282	5,475	3,411	3,596	11,497	9,169	901	905	11,142	49,289
Camp 26	720	647	3,255	3,264	4,928	5,443	3,107	2,915	10,227	7,075	662	581	9,774	42,824
Camp 13	702	748	3,019	3,113	4,417	4,678	2,715	2,787	9,542	7,576	734	673	9,542	40,704
Camp 1W	756	756	2,919	2,933	4,395	4,458	2,676	2,763	9,570	7,690	854	746	9,349	40,516
Camp 1E	655	729	2,766	2,928	4,210	4,435	2,616	2,746	9,218	7,689	786	685	9,082	39,463
Camp 3	682	728	3,014	3,086	4,168	4,398	2,498	2,681	9,310	7,282	686	581	9,086	39,114
Camp 7	696	706	2,931	3,053	4,152	4,354	2,581	2,542	8,960	7,043	705	636	9,120	38,359
Camp 9	616	556	2,743	2,754	3,927	3,999	2,463	2,482	8,423	6,845	704	686	8,538	36,198
Camp 24	513	524	2,290	2,504	4,045	4,169	2,324	2,414	8,042	5,932	547	421	7,802	33,725
Camp 8W	549	531	2,635	2,580	3,469	3,656	2,044	2,152	7,675	6,128	611	544	7,497	32,574
Camp 10	625	603	2,534	2,641	3,328	3,686	2,108	2,050	7,596	5,966	590	519	7,468	32,246
Camp 8E	504	504	2,275	2,379	3,423	3,479	2,331	2,266	7,443	5,970	549	558	7,303	31,681
Camp 11	547	583	2,339	2,378	3,360	3,564	2,143	2,196	7,237	5,925	541	500	7,102	31,313
Camp 14	543	575	2,228	2,470	3,296	3,643	2,219	2,205	7,095	5,704	584	517	6,838	31,079
Camp 4	560	595	2,281	2,439	3,415	3,557	1,963	1,956	7,211	5,632	485	384	7,496	30,478
Camp 2E	537	504	2,200	2,258	3,199	3,466	1,747	1,804	6,958	5,203	508	437	6,930	28,821
Camp 18	474	503	2,230	2,275	2,916	3,022	1,813	1,711	6,481	5,069	360	371	6,656	27,225
Nayapara RC*	87	91	1,578	1,642	2,931	3,037	2,227	2,280	7,168	4,996	457	417	5,733	26,911
Camp 2W	410	412	1,845	1,972	2,845	3,086	1,560	1,568	5,883	4,661	489	373	5,736	25,104
Camp 5	444	474	1,967	2,049	2,745	2,814	1,531	1,615	5,948	4,626	453	411	6,027	25,077
Camp 6	512	446	1,993	2,106	2,673	2,850	1,443	1,530	5,705	4,507	427	384	5,723	24,576
Camp 22	411	384	1,607	1,799	2,560	2,631	1,690	1,682	4,861	3,984	378	334	4,602	22,321
Camp 12	367	351	1,592	1,687	2,350	2,614	1,560	1,526	5,057	3,951	403	353	4,828	21,811
Camp 16	433	396	1,587	1,668	2,324	2,536	1,522	1,438	4,963	4,000	383	322	4,825	21,572
Camp 19	331	318	1,552	1,623	2,176	2,413	1,385	1,430	4,694	3,658	338	282	4,649	20,200
Kutupalong RC*	93	79	1,102	1,262	2,009	2,150	1,510	1,446	4,822	3,843	296	281	3,784	18,893
Camp 17	226	267	1,267	1,257	1,655	1,742	933	934	3,530	2,699	220	217	3,520	14,947
Camp 27	222	194	1,006	1,072	1,545	1,542	925	958	3,010	2,165	198	168	2,891	13,005
Camp 21	228	213	909	965	1,346	1,410	760	800	2,962	2,367	184	134	3,010	12,278
Camp 23	182	200	796	824	1,445	1,472	629	648	2,667	1,687	170	159	2,641	10,879
Camp 25	141	160	725	716	1,133	1,217	760	700	2,254	1,611	172	114	2,185	9,703
Camp 20	124	134	541	627	780	831	408	442	1,753	1,295	121	98	1,729	7,154
Camp 20 Extension	65	58	300	293	388	415	222	227	867	682	50	44	878	3,611
Camp 4 Extension	64	53	239	256	359	353	176	178	758	585	45	42	766	3,108
No camp**	86	84	399	429	561	604	320	340	1,192	933	97	74	1,204	5,119
Total	15,051	14,999	66,201	68,979	97,755	103,199	60,320	61,008	210,579	164,148	15,688	13,951	205,456	891,878

*Kutupalong RC includes 14,182 registered refugees of 2,619 families & Nayapara RC includes 19,774 registered refugees of 3,705 families

**This represents refugees residing outside formal camp boundaries

Population figures by period of arrival

Arrival Period	Before 09 Oct 2016		09 Oct 2016 - 24 Aug 2017		25 Aug 2017 - 31 Dec 2017		01 Jan 2018 - Current date		Total Families	Total Individuals
Camp	Total Families	Total Individuals	Total Families	Total Individuals	Total Families	Total Individuals	Total Families	Total Individuals		
Camp 15	11	47	767	3,399	10,363	45,835	1	8	11,142	49,289
Camp 26	72	352	851	3,797	8,394	36,696	457	1,979	9,774	42,824
Camp 13	11	42	787	3,441	8,735	37,187	9	34	9,542	40,704
Camp 1W	20	79	1,038	4,454	8,270	35,913	21	70	9,349	40,516
Camp 7	120	527	1,054	4,563	7,896	33,061	50	208	9,120	38,359
Camp 3	17	80	949	4,175	8,091	34,739	29	120	9,086	39,114
Camp 1E	34	163	1,608	6,905	7,413	32,294	27	101	9,082	39,463
Camp 9	89	349	2,111	8,583	6,336	27,258	2	8	8,538	36,198
Camp 24	2,180	10,558	527	2,224	5,079	20,891	16	52	7,802	33,725
Camp 8W	24	110	655	2,854	6,748	29,343	70	267	7,497	32,574
Camp 4	22	99	290	1,197	6,956	28,221	228	961	7,496	30,478
Camp 10	8	39	596	2,542	6,857	29,640	7	25	7,468	32,246
Camp 8E	34	142	855	3,742	6,395	27,720	19	77	7,303	31,681
Camp 11	1	3	1,092	4,849	6,007	26,457	2	4	7,102	31,313
Camp 2E	3,232	13,660	1,676	7,085	1,994	7,986	28	90	6,930	28,821
Camp 14	7	25	592	2,745	6,233	28,280	6	29	6,838	31,079
Camp 18	12	48	166	686	6,452	26,395	26	96	6,656	27,225
Camp 5	23	90	533	2,262	5,454	22,664	17	61	6,027	25,077
Camp 2W	1,834	8,413	1,395	6,066	2,464	10,475	43	150	5,736	25,104
Nayapara RC*	3,752	19,963	252	977	1,693	5,865	36	106	5,733	26,911
Camp 6	56	254	1,074	4,840	4,578	19,431	15	51	5,723	24,576
Camp 12	3	15	236	1,074	4,585	20,702	4	20	4,828	21,811
Camp 16	5	25	281	1,243	4,539	20,304	-	-	4,825	21,572
Camp 19	1	4	387	1,757	4,182	18,095	79	344	4,649	20,200
Camp 22	6	39	206	1,001	4,381	21,253	9	28	4,602	22,321
Kutupalong RC*	2,928	15,504	197	775	641	2,559	18	55	3,784	18,893
Camp 17	28	126	154	625	2,230	9,350	1,108	4,846	3,520	14,947
Camp 21	12	53	144	626	2,731	11,150	123	449	3,010	12,278
Camp 27	29	142	259	1,213	2,470	11,041	133	609	2,891	13,005
Camp 23	254	1,171	284	1,210	2,100	8,486	3	12	2,641	10,879
Camp 25	18	90	254	1,133	1,909	8,461	4	19	2,185	9,703
Camp 20	57	255	109	478	1,248	5,139	315	1,282	1,729	7,154
Camp 20 Extension	15	62	59	257	640	2,624	164	668	878	3,611
Camp 4 Extension	21	83	50	227	672	2,702	23	96	766	3,108
No camp**	47	209	150	640	931	3,962	76	308	1,204	5,119
Total	14,983	72,821	21,638	93,645	165,667	712,179	3,168	13,233	205,456	891,878

*Kutupalong RC includes 14,182 registered refugees of 2,619 families & Nayapara RC includes 19,774 registered refugees of 3,705 families

**This represents refugees residing outside formal camp boundaries

Creation date: 31 August 2018 Sources: UNHCR Feedback: bgdcoim@unhcr.org

Population figures by specific needs

Camp	Families with separated children	Families with unaccompanied children	Families with a person with disability	Families with older person at risk	Families with older person at risk with children	Families with people with serious medical condition	Single male parents with infants	Single female parent	Families with people with specific needs
Camp 26	178	55	290	372	115	230	81	2,251	3,344
Camp 15	237	60	353	589	197	463	63	1,611	3,201
Camp 1E	168	41	550	450	318	483	56	1,134	2,878
Nayapara RC	178	41	608	168	51	1,203	35	1,198	2,837
Camp 13	247	79	311	394	208	344	65	1,425	2,755
Camp 7	220	29	353	361	244	454	106	1,261	2,754
Camp 1W	164	32	395	446	214	448	65	1,264	2,751
Camp 3	198	62	375	355	292	328	65	1,411	2,649
Camp 24	177	74	301	289	121	258	43	1,643	2,644
Camp 9	150	74	383	396	263	488	95	1,050	2,508
Camp 4	239	88	180	290	196	268	100	1,432	2,455
Camp 10	126	79	385	337	243	512	93	1,032	2,401
Camp 8E	154	70	344	369	243	417	84	1,074	2,348
Camp 2E	158	52	256	247	200	312	50	1,187	2,171
Camp 18	155	62	241	225	168	303	81	1,165	2,123
Camp 11	169	61	272	299	161	235	67	1,080	1,971
Camp 5	161	70	208	288	166	210	61	1,094	1,953
Camp 14	118	46	184	314	137	304	42	964	1,844
Camp 6	166	44	219	241	125	316	39	815	1,809
Camp 2W	106	18	280	239	112	264	62	796	1,693
Camp 8W	90	37	244	268	156	288	81	735	1,674
Kutupalong RC	60	15	351	106	39	768	10	584	1,600
Camp 19	121	32	187	215	80	116	44	742	1,379
Camp 12	80	34	142	199	103	138	32	766	1,331
Camp 16	92	22	171	201	81	162	37	711	1,322
Camp 22	70	17	159	157	78	154	16	581	1,119
Camp 17	101	19	128	138	74	108	36	637	1,101
Camp 23	50	12	75	95	43	69	11	742	1,009
Camp 27	49	13	93	76	33	49	21	680	945
Camp 21	66	23	110	96	32	108	35	515	901
Camp 25	38	23	75	84	36	87	18	501	766
Camp 20	26	12	93	69	47	74	20	300	559
Camp 20 Extension	21	14	35	39	23	35	11	134	268
Camp 4 Extension	14	9	39	25	18	38	8	118	236
No camp	27	10	50	59	16	33	12	217	380
Total	4,374	1,429	8,440	8,496	4,633	10,067	1,745	32,850	63,679