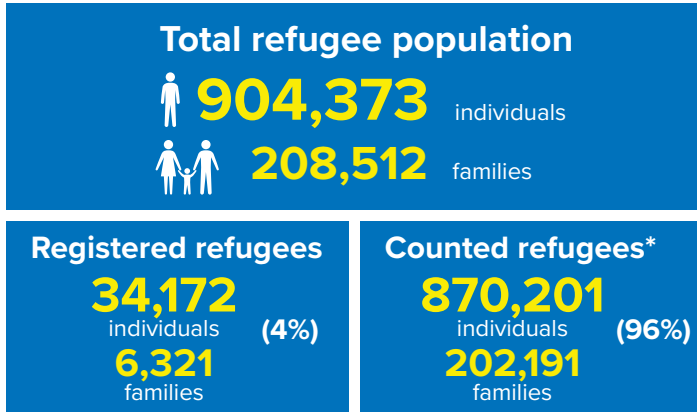
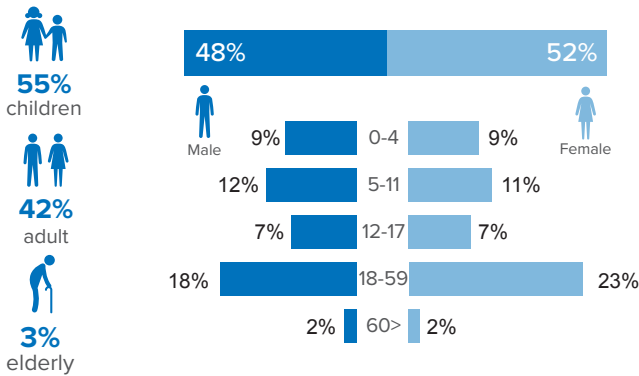


Refugee population figure

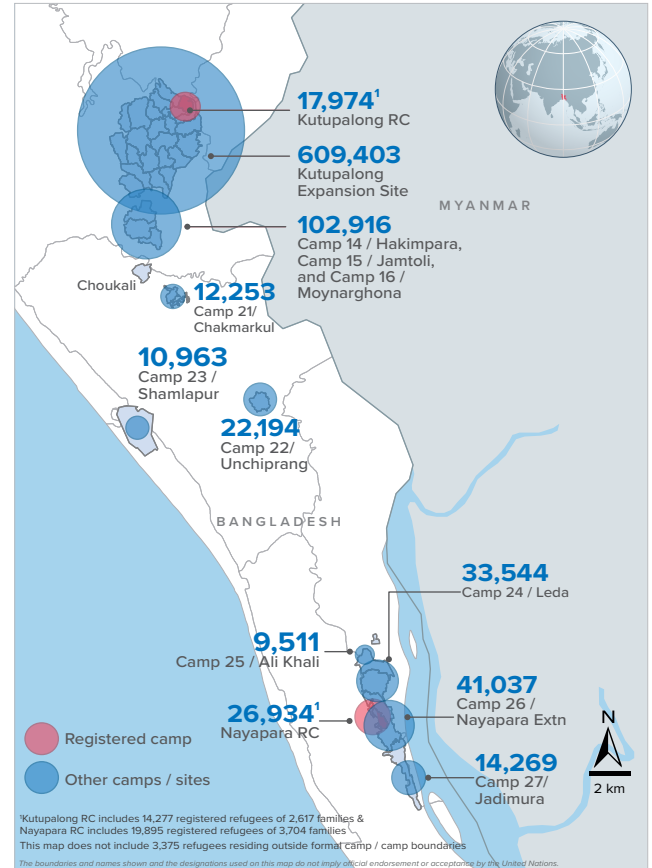


* Some refugees living in host communities and in certain locations beyond the camp boundaries may not have been counted.

Demography

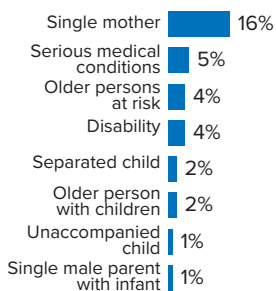


Refugee population density



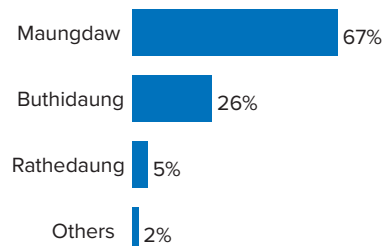
Specific needs

31% of the families have been identified with at least one protection vulnerability*



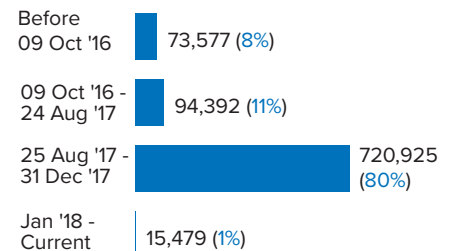
Place of origin

67% of the Rohingya refugees comes from Maungdaw Township



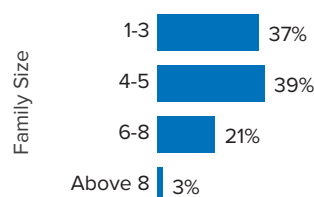
Period of arrival

80% of current population arrived between Aug. and Dec 2017



Family size breakdown

39% of the families have a standard family size of 4-5 persons



Linking exercise

The Linking Exercise, conducted from December 2017 until February 2018, was a collaborative effort between the Government of Bangladesh and the United Nations High Commissioner for Refugees that aimed to merge the family based Rohingya population data collected through the Family Counting Exercise with attributes of the individual Rohingya population data collected by the Ministry of Home Affairs.

The exercise was conducted with a view to creating a unified dataset with individual data grouped into families which will be used to better protect and assist families.

*Figures are the percentage of total families with at least one person with a specific need. More than one specific need may be present within one family.

Age and gender breakdown by camp/site

Camp	Infant female below 1	Infant male below 1	1-4 Children female	1-4 Children male	5-11 Children female	5-11 Children male	12-17 Children female	12-17 Children male	18-59 Adult female	18-59 Adult male	60+ Elderly female	60+ Elderly male	Total Families	Total Individuals
Camp 15	951	899	3,543	3,690	5,300	5,478	3,425	3,607	11,534	9,187	907	905	11,177	49,426
Camp 13	721	770	3,096	3,207	4,510	4,771	2,774	2,854	9,801	7,745	743	686	9,772	41,678
Camp 26	694	616	3,132	3,135	4,748	5,205	2,973	2,775	9,808	6,761	635	555	9,399	41,037
Camp 1W	763	755	2,952	2,967	4,436	4,529	2,689	2,790	9,654	7,760	864	754	9,443	40,913
Camp 1E	676	744	2,824	3,009	4,322	4,537	2,695	2,796	9,448	7,847	816	710	9,301	40,424
Camp 3	702	742	3,029	3,120	4,226	4,449	2,537	2,724	9,432	7,375	702	592	9,202	39,630
Camp 7	710	730	3,006	3,149	4,253	4,462	2,668	2,610	9,173	7,174	723	654	9,330	39,312
Camp 9	624	562	2,795	2,798	3,973	4,042	2,479	2,481	8,539	6,900	712	692	8,643	36,597
Camp 24	506	521	2,278	2,488	4,028	4,147	2,308	2,403	8,003	5,904	543	415	7,761	33,544
Camp 10	628	620	2,597	2,724	3,399	3,745	2,146	2,087	7,791	6,111	599	522	7,651	32,969
Camp 8W	544	517	2,618	2,566	3,427	3,632	2,035	2,145	7,637	6,091	605	534	7,463	32,351
Camp 4	573	625	2,444	2,582	3,585	3,710	2,043	2,061	7,619	5,945	521	404	7,890	32,112
Camp 14	559	584	2,309	2,552	3,385	3,732	2,258	2,242	7,284	5,816	604	524	7,031	31,849
Camp 11	546	576	2,358	2,385	3,371	3,575	2,134	2,186	7,243	5,914	533	495	7,113	31,316
Camp 8E	495	498	2,244	2,326	3,360	3,410	2,306	2,234	7,340	5,881	537	554	7,191	31,185
Camp 2E	553	522	2,298	2,335	3,306	3,591	1,802	1,847	7,195	5,414	517	443	7,213	29,823
Nayapara RC*	86	90	1,551	1,624	2,916	2,995	2,301	2,359	7,143	5,008	447	414	5,706	26,934
Camp 18	464	494	2,186	2,210	2,850	2,967	1,781	1,670	6,342	4,962	352	357	6,502	26,635
Camp 2W	425	429	1,903	1,995	2,894	3,130	1,618	1,606	6,054	4,761	492	389	5,894	25,696
Camp 5	435	473	1,957	2,026	2,775	2,825	1,542	1,621	5,934	4,618	465	422	6,037	25,093
Camp 6	523	463	2,006	2,143	2,708	2,915	1,466	1,549	5,784	4,571	439	387	5,805	24,954
Camp 12	402	385	1,737	1,858	2,534	2,790	1,705	1,636	5,485	4,267	437	379	5,245	23,615
Camp 22	410	381	1,595	1,796	2,548	2,614	1,671	1,667	4,840	3,960	378	334	4,581	22,194
Camp 16	432	403	1,596	1,683	2,334	2,551	1,519	1,427	4,986	4,002	384	324	4,844	21,641
Camp 19	336	322	1,589	1,674	2,242	2,490	1,428	1,466	4,847	3,775	348	287	4,815	20,804
Kutupalong RC*	78	58	1,017	1,165	1,922	2,050	1,468	1,430	4,590	3,683	264	249	3,541	17,974
Camp 17	264	300	1,422	1,419	1,866	1,963	1,026	1,030	3,981	3,052	242	236	3,973	16,801
Camp 27	237	217	1,094	1,148	1,674	1,710	1,030	1,063	3,307	2,384	219	186	3,150	14,269
Camp 21	225	210	904	960	1,346	1,410	761	797	2,960	2,361	184	135	3,008	12,253
Camp 23	181	199	808	845	1,451	1,491	632	650	2,687	1,690	170	159	2,661	10,963
Camp 25	140	158	711	701	1,110	1,191	743	685	2,213	1,579	168	112	2,146	9,511
Camp 20	124	137	561	643	797	857	410	447	1,796	1,320	122	97	1,766	7,311
Camp 4 Extension	105	105	464	518	663	672	318	325	1,401	1,107	80	79	1,412	5,837
Camp 20 Extension	87	74	358	380	455	478	256	241	1,056	850	63	49	1,067	4,347
No camp**	62	46	249	254	380	400	227	253	775	621	62	46	779	3,375
Total	15,261	15,225	67,231	70,075	99,094	104,514	61,174	61,764	213,682	166,396	15,877	14,080	208,512	904,373

*Kutupalong RC includes 14,277 registered refugees of 2,617 families & Nayapara RC includes 19,895 registered refugees of 3,704 families

**This represents refugees residing outside formal camp boundaries

Population figures by period of arrival

Arrival Period	Before 09 Oct 2016		09 Oct 2016 - 24 Aug 2017		25 Aug 2017 - 31 Dec 2017		01 Jan 2018 - Current date		Total Families	Total Individuals
Camp	Total Families	Total Individuals	Total Families	Total Individuals	Total Families	Total Individuals	Total Families	Total Individuals		
Camp 15	11	47	761	3,376	10,396	45,966	9	37	11,177	49,426
Camp 13	12	48	786	3,439	8,908	37,920	66	271	9,772	41,678
Camp 26	72	352	828	3,682	8,062	35,112	437	1,891	9,399	41,037
Camp 1W	25	95	1,041	4,488	8,351	36,241	26	89	9,443	40,913
Camp 1E	40	188	1,647	7,104	7,581	33,015	33	117	9,301	40,424
Camp 3	21	99	950	4,190	8,204	35,230	27	111	9,202	39,630
Camp 7	99	429	1,077	4,666	8,083	33,938	71	279	9,330	39,312
Camp 9	93	373	2,090	8,488	6,438	27,663	22	73	8,643	36,597
Camp 24	2,173	10,526	523	2,210	5,049	20,756	16	52	7,761	33,544
Camp 10	12	53	616	2,633	7,000	30,197	23	86	7,651	32,969
Camp 8W	27	113	639	2,795	6,719	29,142	78	301	7,463	32,351
Camp 4	28	116	339	1,390	7,257	29,495	266	1,111	7,890	32,112
Camp 14	12	44	603	2,795	6,377	28,853	39	157	7,031	31,849
Camp 11	3	11	1,080	4,795	6,014	26,447	16	63	7,113	31,316
Camp 8E	34	142	849	3,714	6,280	27,224	28	105	7,191	31,185
Camp 2E	3,308	14,021	1,687	7,073	2,171	8,578	47	151	7,213	29,823
Nayapara RC*	3,750	20,077	248	968	1,672	5,783	36	106	5,706	26,934
Camp 18	12	48	165	679	6,299	25,812	26	96	6,502	26,635
Camp 2W	1,886	8,649	1,411	6,079	2,547	10,799	50	169	5,894	25,696
Camp 5	29	116	523	2,211	5,464	22,688	21	78	6,037	25,093
Camp 6	57	250	1,125	5,062	4,608	19,588	15	54	5,805	24,954
Camp 12	5	29	264	1,202	4,928	22,193	48	191	5,245	23,615
Camp 22	6	39	207	998	4,355	21,111	13	46	4,581	22,194
Camp 16	5	25	279	1,236	4,550	20,339	10	41	4,844	21,641
Camp 19	4	13	397	1,790	4,223	18,219	191	782	4,815	20,804
Kutupalong RC*	2,838	15,196	155	609	532	2,116	16	53	3,541	17,974
Camp 17	34	151	204	834	2,601	10,861	1,134	4,955	3,973	16,801
Camp 27	29	142	275	1,300	2,698	12,149	148	678	3,150	14,269
Camp 21	12	53	144	626	2,723	11,096	129	478	3,008	12,253
Camp 23	252	1,155	287	1,222	2,106	8,517	16	69	2,661	10,963
Camp 25	17	85	252	1,122	1,873	8,285	4	19	2,146	9,511
Camp 20	56	248	109	477	1,277	5,278	324	1,308	1,766	7,311
Camp 4 Extension	57	218	122	539	1,101	4,522	132	558	1,412	5,837
Camp 20 Extension	66	282	66	292	727	2,965	208	808	1,067	4,347
No camp**	31	144	72	308	654	2,827	22	96	779	3,375
Grand Total	15,116	73,577	21,821	94,392	167,828	720,925	3,747	15,479	208,512	904,373

*Kutupalong RC includes 14,277 registered refugees of 2,617 families & Nayapara RC includes 19,895 registered refugees of 3,704 families

**This represents refugees residing outside formal camp boundaries

Creation date: 15 December 2018 Sources: UNHCR Feedback: bgdcoim@unhcr.org

Population figures by specific needs

Camp	Families with separated children	Families with unaccompanied children	Families with a person with disability	Families with older person at risk	Families with older person at risk with children	Families with people with serious medical condition	Single male parents with infants	Single female parent	Families with people with specific needs
Camp 26	169	53	280	357	114	215	81	2,182	3,236
Camp 15	234	60	354	589	198	460	63	1,606	3,211
Camp 1E	173	45	557	460	327	489	57	1,164	2,941
Camp 7	225	28	362	374	243	460	107	1,289	2,819
Nayapara RC	176	41	607	164	50	1,197	35	1,187	2,818
Camp 13	243	79	311	395	208	344	64	1,424	2,800
Camp 1W	166	32	404	448	215	447	66	1,270	2,772
Camp 3	203	61	376	368	289	319	66	1,438	2,693
Camp 24	177	73	299	285	121	256	43	1,637	2,632
Camp 4	246	92	202	302	205	293	101	1,504	2,590
Camp 9	149	73	382	396	260	487	95	1,046	2,530
Camp 10	125	79	382	337	240	506	93	1,036	2,434
Camp 8E	152	69	338	364	239	410	83	1,057	2,310
Camp 2E	160	54	263	253	208	307	53	1,218	2,262
Camp 18	152	62	238	220	167	293	81	1,134	2,072
Camp 11	167	61	263	290	155	230	65	1,058	1,975
Camp 5	159	68	213	297	163	213	61	1,094	1,965
Camp 14	119	45	185	314	138	305	43	969	1,906
Camp 6	165	44	213	242	130	313	42	837	1,840
Camp 2W	109	17	287	240	115	266	59	810	1,744
Camp 8W	95	36	233	266	148	292	79	742	1,686
Kutupalong RC	52	17	344	86	35	772	7	527	1,516
Camp 12	81	33	142	204	103	138	32	768	1,457
Camp 19	122	33	190	219	81	118	46	761	1,415
Camp 16	92	22	167	201	81	159	35	704	1,328
Camp 17	107	21	138	152	82	124	41	704	1,235
Camp 22	69	17	159	156	77	154	16	580	1,119
Camp 27	55	13	99	88	34	63	21	729	1,025
Camp 23	50	12	72	97	43	69	11	752	1,020
Camp 21	66	23	110	96	32	105	35	511	900
Camp 25	38	23	75	83	33	87	18	494	755
Camp 20	25	12	92	68	46	75	19	289	564
Camp 4 Extension	20	13	52	36	33	47	13	179	384
Camp 20 Extension	26	12	44	37	25	41	12	140	300
No camp	19	6	26	39	12	21	7	143	246
Total	4,386	1,429	8,459	8,523	4,650	10,075	1,750	32,983	64,500