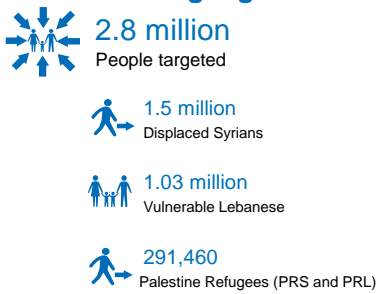


# 2018 November Statistical Dashboard



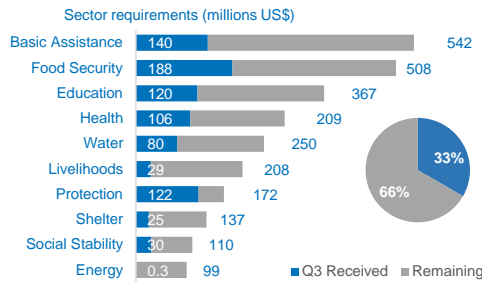
The monthly dashboard summarizes the progress made by partners involved in the Lebanon Crisis Response Plan (LCRP) and highlights trends affecting people in need. Partners in Lebanon are working to: 1) ensure protection of vulnerable populations; 2) provide immediate assistance to vulnerable populations; 3) support service provision through national systems; and 4) reinforce Lebanon's economic, social, institutional and environmental stability. Reported progress towards targets is cumulative since January 2018, unless otherwise specified.

## 2018 Planning Figures

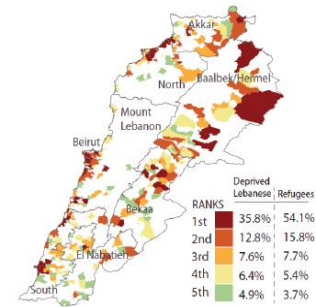


## 2018 Funding Requirements

**US\$ 2.68 billion**



## 251 Most Vulnerable Cadastres



### Basic Assistance

This month:	Partners reporting	Population reached
# of households receiving regular cash transfers (monthly target)*	64,923 /	238,700
Total USD distributed in multi-purpose cash (Leb, Syr & Pal)	\$131.1m /	\$307.1m
# of families receiving seasonal cash grants or vouchers	88,376 /	238,200
Total USD distributed as seasonal multi-purpose cash (Leb, Syr & Pal)	\$33,874,875 /	\$175.4m
Total USD amount injected into economy in forms of cash assistance (seasonal + regular)	\$164.9m /	\$482.5m

\* Vulnerable Lebanese, Syrian refugees and Palestine refugees. Population reached includes families targeted by UNICEF.

Syrian refugees < MEB (\$114/person/month) <sup>19</sup>	68%
Syrian refugees < SMEB (\$87/person/month) <sup>19</sup>	51%
Lebanese families receiving \$175 MPC grants	377
Palestinian families receiving \$100 MPC grants	8,784
Syrian families receiving \$175 MPC grants	62,627
Syrian families receiving child-focused grants*	-

MPC: multi-purpose cash  
\*Child-focused grants: 'Min-ila' + 'reaching schools' cash grants from UNICEF.

### Education

This month:	Partners reporting	Population reached
# of children and youth whose registration fees for public formal education are partially or fully subsidised	438,288 /	457,682
# of children and youth whose registration fees for regulated NFE programmes are partially or fully subsidised	67,019 /	75,000
# of children and youth benefiting from remedial or homework support programs	44,004 /	70,000

% of school-aged refugees out of formal education in 2017 <sup>3</sup>	59%
Non-Lebanese students in basic education enrolled in the first shift in 2017 <sup>3</sup>	1 in 3
% of non-Lebanese among all students enrolled in first shift basic education in 2017 <sup>3</sup>	32%
% of non-Lebanese among all students enrolled in public schools in basic education in 2017 <sup>3</sup>	50%

### Water

This month:	Partners reporting	Population reached
# of affected people assisted with improved access to adequate quantity of safe water for drinking and domestic use [e.g. public water supply system improvements]*	348,406 /	1,319,000
# of affected people assisted with improved access to safely managed wastewater services [e.g. public wastewater network augmentations]*	51,803 /	917,000
# of affected people assisted with temporary access to adequate quantity of safe water for drinking and water for domestic use in temporary locations [monthly target; e.g. water trucking, on-site water treatment]	264,970 /	241,550
# of affected people with access to improved safe sanitation in temporary locations [monthly target; e.g. installation of latrines, septic systems, desludging]	248,052 /	262,150
# individuals who have experienced a WASH behaviour change session/activity	226,322 /	394,000

\*Activities may focus on one or several aspects of a system (e.g. improving the efficiency of the water supply through a network repair programme), but households may still not have safe water when needed.

% population in Lebanon without access to safely managed drinking water <sup>18</sup>	64%
% of all Lebanon's sewage not receiving secondary (biological) treatment <sup>9</sup>	97%
% Syrian refugee families with no access to improved drinking water sources <sup>8</sup>	22%
% Syrian refugee families with no access to improved sanitation facilities <sup>8</sup>	14%
% Syrian refugee families without access to private sanitation facilities <sup>8</sup>	39%
% Syrian refugee families with no access to personal hygiene items <sup>8</sup>	13%

### Food Security

This month:	Partners reporting	Population reached
# of vulnerable people reached with monthly food assistance through various modalities (monthly target)	747,665 /	899,143
Total USD transferred as cash for food	\$193.8m /	\$345.0m
# of farmers with enhanced farming production	2,405 /	21,693
# of people supported for employment in the agriculture sector	2,027 /	2,000
# of individuals supported for seasonal agricultural labor/casual labor	9,570 /	21,678
# of people supported for improved nutritional practices	5,535 /	10,000

% Syrian refugee families with some level of food insecurity <sup>19</sup>	90%
% Syrian refugee families are moderately to severely food insecure <sup>19</sup>	34%
% Syrian refugee families depending on food voucher/e-card for income source <sup>2</sup>	40%
% Lebanese families vulnerable to food insecurity <sup>4</sup>	10%
% Lebanese farmers in need of agriculture support <sup>4</sup>	73%
% PRS population who is food insecure <sup>5</sup>	95%

### Energy

This month:	Partners reporting	Population reached
# households benefitting from renewable energy equipment (solar water heaters, pico solar system, etc.)	0 /	196,575
# municipalities or informal settlements provided with off-grid lighting	25 /	38
# renewable energy power generation systems installed for communities and/or institutions	11 /	4
# individuals reached through installation of necessary equipment to reinforce the distribution network	18,775 /	277,140

Power generation required to cater for the daily electricity needs of displaced Syrians <sup>15</sup>	486 MW
Power added to the grid since 2010 by MoEW	715 MW
Percentage of energy supplied to displaced Syrians out of total energy supplied in Lebanon <sup>15</sup>	33%



## Health

This month:	Partners reporting	19
	Population reached	62,653
# of subsidized primary health care consultations provided	1,497,213 /	2,152,000
# of persons assisted with their hospital bills	79,992 /	127,226
# of primary health care staff receiving salary support at central, peripheral and PHC level	497 /	250

% Syrian refugees not able to access needed primary healthcare in past 6 months <sup>19</sup>	13%
% Syrian refugees unable to access needed secondary healthcare in past 6 months <sup>19</sup>	23%
Syrian refugee families' monthly health-related expenditure <sup>2</sup>	\$52
Syrian refugee families' monthly health-related expenditure share <sup>2</sup>	13%



## Livelihoods

This month:	Partners reporting	30
	Population reached	4,567
# micro, small & medium enterprises (MSME) & cooperatives supported through increased access to financial services, in-kind & cash grants	504 /	3,090
# of targeted vulnerable people working on public infrastructure / environmental assets upgrading	5,461 /	37,650
# people trained and/or provided with marketable skills and other types of services	38,053 /	31,000

% of Lebanese families registered with NPTP with access to full-time employment <sup>6</sup>	13%
% of Syrian refugee families living below the poverty line <sup>19</sup>	68%
% of Syrian children at work <sup>7</sup>	17.5%
% of Lebanese children at work <sup>7</sup>	5%



## Protection

This month:	Partners reporting	30
	Population reached	122,960
# of individuals benefitting from legal counseling, assistance and representation regarding legal stay	28,034 /	40,000
# of individuals benefitting from counseling, legal assistance and representation for civil registration (birth registration, marriage)	65,362 /	91,000
# of individuals benefitting from community-based interventions	24,707 /	67,640
# of individuals trained, supported, and monitored to engage in community-based mechanisms	3,223 /	5,201
# of individuals with specific needs receiving specific support (non-cash)	13,408 /	16,000
# of women, girls, men and boys at risk and survivors accessing SGBV prevention and response services in safe spaces	61,478 /	140,000
# of women, girls, men and boys sensitized on SGBV	128,561 /	286,750
# of boys and girls receiving case management services and assisted through Child Protection focused psychosocial support	17,086 /	24,000
# of caregivers engaged in activities to promote wellbeing and protection of children	49,358 /	29,262
# of boy and girls boys engaged in community-based Child Protection activities	121,103 /	91,445

Total registered Syrian refugees <sup>1</sup>	952,562
% of Syrian refugees who are women and children <sup>2</sup>	80.5%
% of Syrian refugee families reporting that all members have legal residency permits <sup>19</sup>	18%
% of families reported having at least one member with specific needs <sup>2</sup>	66%
# of individuals participating in activities in community centres and SDCs (2017) <sup>9</sup>	19,742
# of institutional actors trained who demonstrate increased knowledge of SGBV (2017) <sup>9</sup>	1,779
# of partners and government staff provided with general training on child protection and children's rights (2017) <sup>9</sup>	387



## Shelter

This month:	Partners reporting	9
	Population reached	26,017
# of people benefitting from weatherproofing and/or maintenance of makeshift shelters within informal settlements, residential and non-residential buildings	137,616 /	208,800
# of people benefitting from rehabilitation, upgrade or repair of substandard buildings into adequate shelters	21,115 /	297,164
# of people benefitting from upgrade of common areas within substandard residential buildings	0 /	30,000
# of people received fire-fighting kits and awareness sessions in informal settlements and substandard buildings	62,377 /	300,000

# of assessments and profiles of (mainly poor urban) neighbourhoods (target: 15)	3
% of Syrian refugee families living in substandard shelter conditions <sup>19</sup>	55%
% of Syrian refugee families living in informal settlements <sup>19</sup>	19%
% of Syrian refugee families living in non-residential buildings (worksites, garages, etc.) <sup>19</sup>	15%
Average cost for rent per household for Syrian refugees <sup>2</sup>	\$183



## Social Stability

This month:	Partners reporting	21
	Population reached	2,585
# community and municipal support projects implemented to alleviate resource pressure and reduce tensions	44 /	300
# new dispute resolution and conflict prevention mechanisms established	113 /	28
# youth and children engaged in social stability initiatives	23,802 /	35,000

% people who agree presence of Syrian refugees places too much strain on Lebanon's resources (e.g. water, electricity) <sup>10</sup>	90%
# cadastres identified as most vulnerable <sup>11</sup>	251
# of vulnerable cadastres where population has increased by 50% or more <sup>11</sup>	114
% people who believe Lebanese people have been good hosts to refugees since 2011 <sup>10</sup>	91% <sup>13</sup>
% people reporting 'no tensions' between Lebanese and Syrians in their area <sup>10</sup>	3% <sup>14</sup>

1. UNHCR registration data as of 30 September 2018.  
2. 2017 Vulnerability Assessment of Syrian Refugees in Lebanon (VASyR).

3. MEHE - 2017.  
4. Food Security and Livelihoods Assessment of Lebanese Host Communities FSLA 2015.

5. AUB UNRWA 2015.  
6. MeSA NPTP Database.

7. ARK Survey (Wave 1, 2&3)  
8. UNICEF (2016), Rapid Assessment for Large & Medium Scale Waste Water Treatment Plants across the Lebanese Territory.

9. Activity Info Partner Reports - 2017.  
10. UNDP - ARK Narrative Report - Regular Perception Surveys on Social Tensions throughout Lebanon.

11. UNDP - ARK Narrative Report - Regular Perception Surveys on Social Tensions throughout Lebanon.  
12. Inter-Agency 251 most vulnerable cadastrals, <http://data.unhcr.org/syrianrefugees/download.php?id=8698>

13. 93% of LebaOese aOd 77% of SyriaO respoOdeOts.

14. 92% of LebaOese aOd 89% of SyriaO respoOdeOts.

15. 2% of LebaOese respoOdeOts aOd 11% of SyriaO respoOdeOts.

16. LebaOoO, MiOistry of EEnergy aOd Water aOd UODP (2017), The Impact of the SyriaO Crisis oO the LebaOese Power Sector aOd Priority RecommOdatiOts.

17. UODP (2017), 2016 Solar PV Status Report for LebaOoO.

18. WHO/JUOICEF (2016), JoiO MoOitOriOg Program LebaOoO water quality survey. Safely maOaHed driOkiOg water is 1) from aO improved water source, 2) that is located oO premises, 3) available wheO Oeeded, aOd 4) free from faecal aOd priority chemical coOamiQatiO.

19. 2018 VuOerability AssessmeOt of SyriaO Refugees iO LebaOoO (VASyR).