

SYRIA REFUGEE RESPONSE

Informal Settlements - Expected Snow Depth in the Coming 72 hours

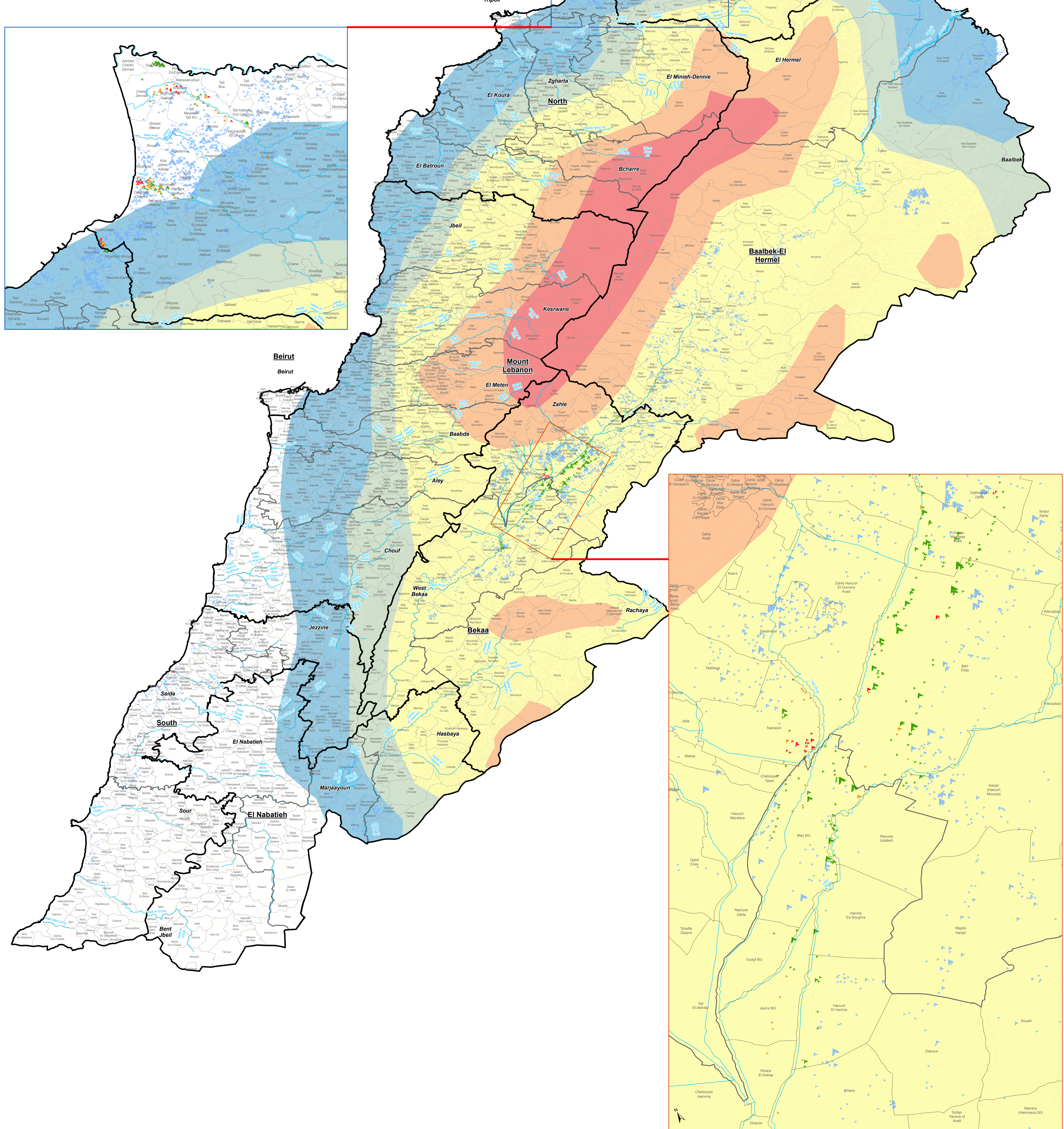
8 January 2019

70,000 refugees living in informal settlements are at risk of extreme weather:

33,000 living in areas with risk of flooding.

3,600 will experience heavy snow in the coming 72 hours (over 50cm of snow).

35,000 are living on high altitudes above 1,100 meters and will face extreme cold.



Informal Settlements - Flood Risks	Total number of Individuals	Expected Snow Depth	Contour line	Elevation (m)	Governorate
▲ High	▲ 0 - 100	■ Less Than 5 cm	— < 1,100	□ Governorate	
▲ Moderate	▲ 101 - 250	■ 5 - 10 cm	— > 1,100	□ District	
▲ Low	▲ 251 - 500	■ 10 - 50 cm	— River	□ Cadastral	
▲ Not affected	▲ 501 - 1,011	■ 50 cm - 1 m			
		■ 1 - 3 m			

This map has been produced by the Inter-Agency Information Management Unit of UNHCR based on maps and material provided by the Government of Lebanon for operational purposes. It does not constitute an official United Nations map. The designations employed and the presentation of material on this map do not imply the expression of any opinion whatsoever on the part of the Secretariat of the United Nations concerning the legal status of any country, territory, city or area or of its authorities, or concerning the delimitation of its frontiers or boundaries.

GIS & Mapping by UNHCR.
For more information about mapping, contact Jad Ghosn at ghosn@unhcr.org, Maroun Sader at sader@unhcr.org

