



**Inter-Agency
Coordination**
Lebanon

BASIC ASSISTANCE WORKING GROUP

21 JAN 2019

AGENDA

1. Sector Updates:
 - a) Targeting Assistance
2. Winter Support:
 - a) Winter activities implemented / preparedness
 - b) Storm Response
 - c) Additional cash support in emergencies

1) Sector Updates:

1) Sector Updates: Targeting Assistance

Reported activities in December 2018 (AI,RAIS)

63,819 vulnerable households received monthly cash transfers / multi-purpose cash

54,159* SYR HHs (CLMC, ICRC, LRC, RI, Solidar Suisse, UNHCR, WFP)

8,959 PRS HHs (UNRWA, NABAA)

701 Leb HHs (ACTED**,CLMC, LRC)

USD 11,168,325 injected in the local economy (Dec)

*drop due to new caseloads being reached based on the new eligibility list; 58,000 cases are booked and expected to be fully reached by January 2019.

**new

2) Winter Support

2.a) Winter Support: Winter Activities / Preparedness

Reported activities by end December 2018

177,447 vulnerable households received winter cash assistance

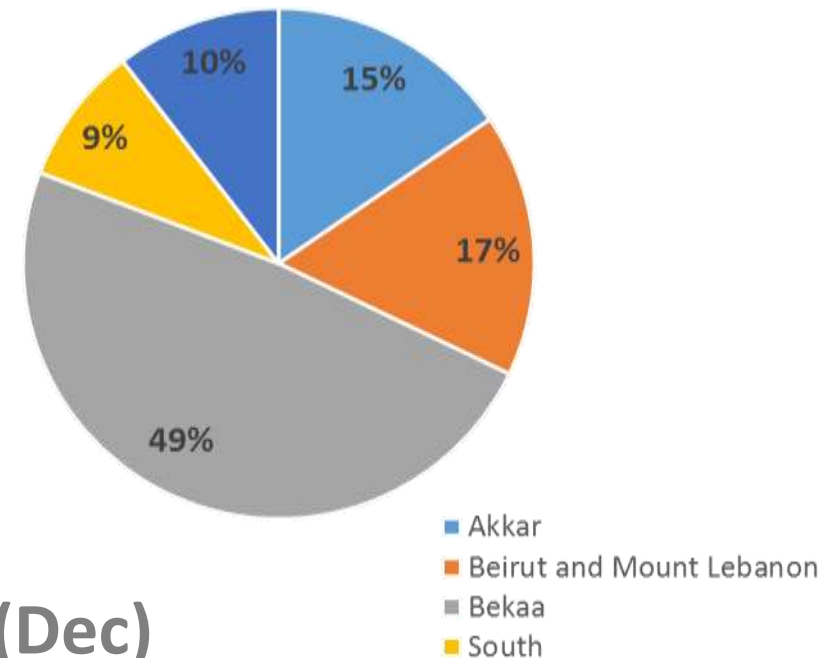
167,349* SYR HHs → \$75 X 5 = \$375 one-off package

9,358 PRS / PRL HHs → \$75 X 5 = \$375 one-off package

740 Leb HHs → \$100 (PCPM – North – another transfer to take place)

21,295** SYR HHS received a one off \$40/child top up

USD \$68,433,290 injected in the local economy (Dec)

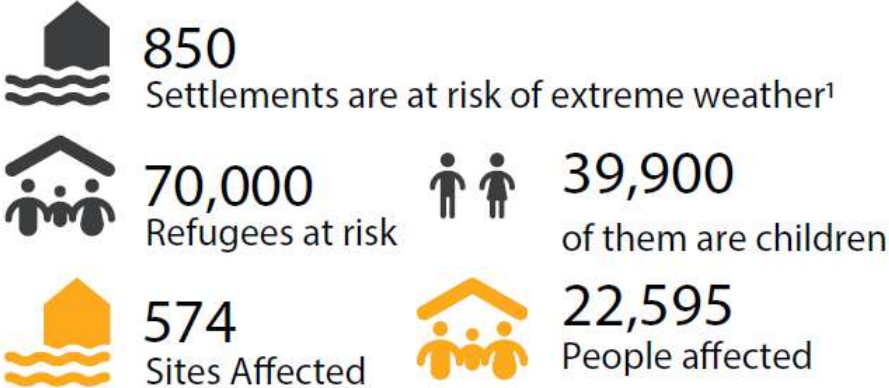


* AI / RAIS: reported figure by UNHCR, CLMC, NRC)

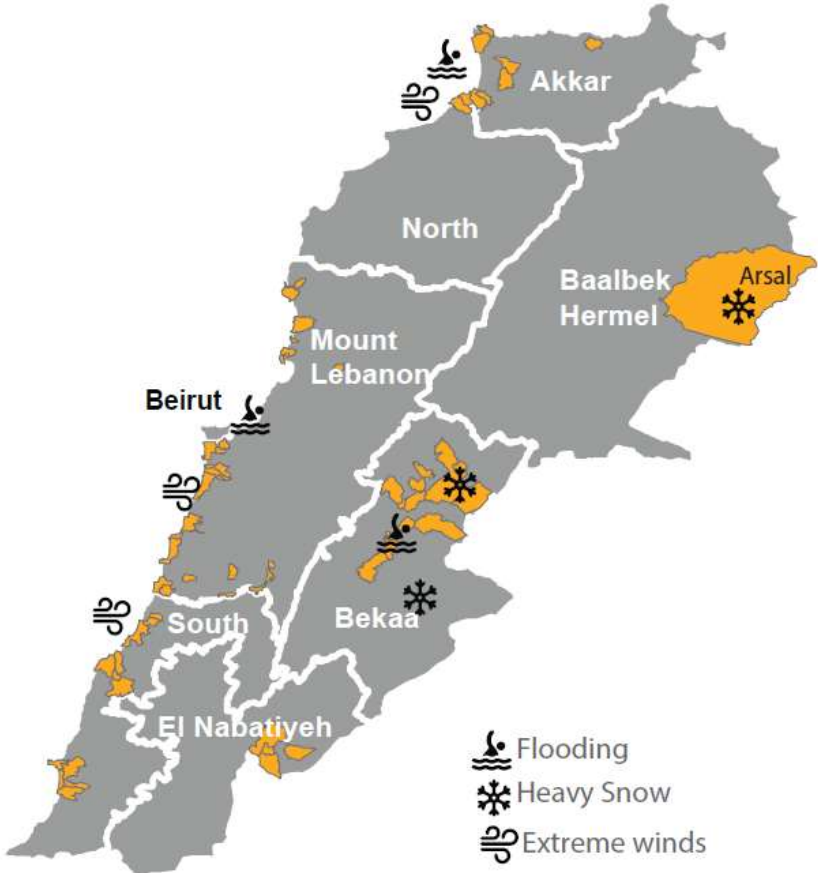
** From within the 167,000 HHs targeted with winter cash – priority given to SV HHs discontinued from cash / food assistance (UNICEF)

2.b) Winter Support: Storm Response Overview

AFFECTED POPULATION



AREAS MOST AFFECTED



2.b) Winter Support: Storm Response Overview

Preparedness

- Emergency SOPs
- Weather forecast/flood hazard
- Stocks
- IAMP
- Assessment/reporting tools
- Activation of communication tree

Needs Assessment

- Phone Survey for initial prioritization
- Adapted RNA for multi-sectoral assessment
- Sector assessment as needed

Response

- Coordination among partners and relevant ministries
- Distribution of CRIs, shelter kits, drainage kits, baby kits, etc. and relocation
- Dewatering and desludging
- Distribution tracking


Lessons Learned

- Identify gaps and issues
- Action planning: steps to be taken to improve preparedness/risk mitigation and response
- Advocacy

2.b) Winter Support: Storm Response Overview

Winter Storms Assistance 16-January 2019

19,984

Individuals assisted 

169

Baby Kits distributed 

3,935

Families assisted 

1,307

Weather proofing kits distributed 

844

Non - Food items distributed 

299

Sites assisted 


20,686

Blankets distributed 


1,170

Food Parcels provided 

8,229

Mattresses distributed 

117

Families received E - cash assistance 

64

Desludging sites 

144

Drainage Kits distributed 

10

Sites Water Pumped 

291

Families received Hygiene kits 

6

Sites Received Water Trucking 

2,547

Fuel Cards Distributed 

Lessons Learned

- Harmonized IA needs assessments for quick response; use of existing data
- Field working groups to activate communication trees as early as possible and outreach to partners – especially local NGOs;
- to discuss an intersectoral sequenced response plan: wash / shelter → Basic Assistance → etc..
- Geo-split is effective
- Additional cash support to mitigate shocks?

2.b) Winter Support: Storm Response Overview

In focus – use of existing data:



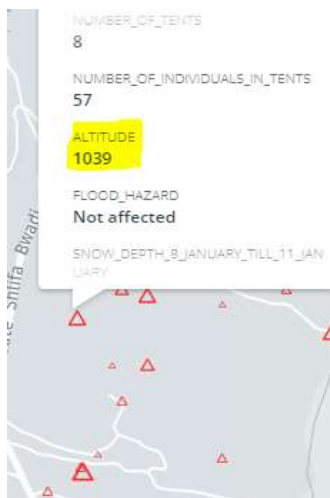
IAMP data
Geocoded list of all Informal Settlements in Lebanon (includes population)
Sites flooded last winter

CNRS Flood Hazards layer
Layer that has flood prone areas categorized by high, moderate and low risk of flooding



Prioritized list of sites at risk

ID	Name	Population	Altitude	Flood Hazard	Number of Tents	Number of Individuals
1001	En Nahriya	1000	1039	High	8	57
1002	El Litani	1000	1039	High	8	57
1003	Rue Ash Sham	1000	1039	High	8	57
1004	Istabl	1000	1039	High	8	57



Altitude Data
Used GPS location of informal settlements to get the corresponding altitude.

Weather forecast & Satellite Imagery
Used several weather forecasting sites to know what areas will be most affected by snow.



[INTERACTIVE MAP](#)

2.b) Winter Support: Storm Response Per Area

NORTH

In focus:

- Harmonized IA needs assessments – RNA
- Geo – split
- Assessments by phone made to flood prone sites
- Coordination with the governor's office
- Extreme weather alerts → activation of RNA network

2.b) Winter Support: Storm Response Per Area

MOUNT LEBANON

In focus:

- Coordination with partners and local authorities - data and maps shared;
- IS, collective shelters affected and covered;
- Rapid needs assessments:
 - Extreme Weather Phone Questionnaire 2019
 - Extreme Weather Questionnaire 2019

2.b) Winter Support: Storm Response Per Area

BEKAA

In focus:

- Three rounds of rapid phone assessments has been conducted by UNHCR during the two consecutive storms;
- Coordination with implementing agencies – WhatsApp groups / communication trees;
- Cash assistance: not to be used in bekaa as a modality for assistance (in emergencies that include floods, snow accumulation, fire...);
- Relocation site – assessments done by protection;
- Referrals mechanism - Sites that agencies are planning to distribute to are flagged PRIOR to distribution as to avoid duplication in the field – google doc.

2.b) Winter Support: Storm Response Per Area

SOUTH

In focus:

- Localized impact of the storm;
- As the majority of the refugees in the South reside in residential or non-residential buildings (around 94% as per the VASyR 2018), the South did not witness the large scale destruction of Information Settlements;
- RNA tool used – geo split; assessments ongoing;
- Several partners prepositioning materials to be used as needed;

2.c) Additional cash support in emergencies

Emergency Cash during storms: how effective according to implementing agencies experience?

- Links with emergency cash – managed by the protection sector, does it follow the same SOP?
- Intervention logic?
- What is the assessment tool used?
- Selection criteria? Any targeting applies?
- Assistance package?
- Lessons learned and next steps