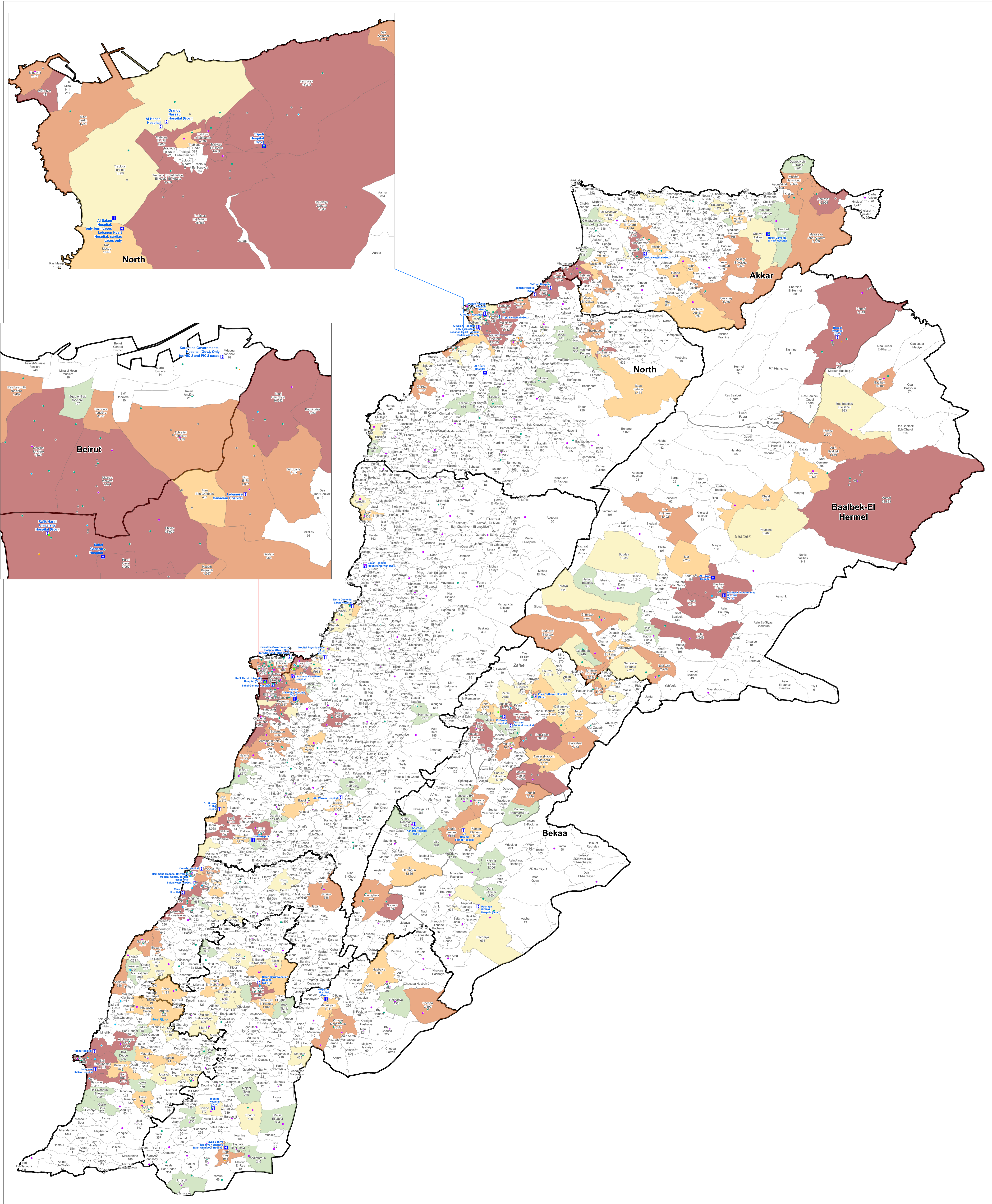


SYRIA REFUGEE RESPONSE LEBANON

Distribution of Health Facilities



Notes
This map has been produced by the Inter-Agency Information Management Unit of UNHCR based on maps and material provided by the Government of Lebanon for operational purposes. It does not constitute an official United Nations map. The designations employed and the presentation of material on this map do not imply the expression of any opinion whatsoever on the part of the Secretariat of the United Nations concerning the legal status of any country, territory, city or area or of its authorities, or concerning the delimitation of its frontiers or boundaries.

Data Sources:
- Lebanese Border, Caza and Cadastral Boundaries: NPMPLT 2005.
- Geographic Projection WGS 1984

Registered Refugees Figures as of 31 March 2019.
For more information contact Diana El Habr at elhabr@unhcr.org

GIS and Mapping by UNHCR. For information and updates contact Jad Ghosn: ghosn@unhcr.org
Maroun Sader: sader@unhcr.org

Legend

Type of Health Gateways

- MoPH PHCC (217)
- MOSA SDC (208)
- MoPH PHCC / MOSA SDC (11)
- UNRWA Clinic (27)
- Dispensary (309)
- TB (9)
- VCT (4)

251 Most Vulnerable Cadastres in Lebanon

- Most Vulnerable (35.8% Deprived Lebanese / 54.1% Refugees) (50)
- 2nd Most Vulnerable (12.8% Deprived Lebanese / 15.8% Refugees) (50)
- 3rd Most Vulnerable (7.6% Deprived Lebanese / 7.7% Refugees) (50)
- 4th Most Vulnerable (6.4% Deprived Lebanese / 5.4% Refugees) (51)
- 5th Most Vulnerable (4.9% Deprived Lebanese / 3.7% Refugees) (50)

- Governorate
- Caza
- Cadaster

