

This fact sheet provides key statistics for Social Stability indicators in the Governorate of Akkar, with approximately quarterly data from May 2017 to July 2019, including interviews with 2,885 Akkar residents, of whom 568 (19.7%) were Syrian.

MEDIA AND POLITICS

- Per cent citing media as tension factor: 1.4%
- Per cent ‘interested’ in politics: 28.1%
- Per cent with recall of social media content related to refugee relations: 52.8%

EXPECTATIONS ON RETURN

- Per cent citing ‘return of Syrian refugees’ as a factor ‘leading to better relations’: 23.9%
- Asked, ‘how long do you think it will take for Syrian refugees to return to Syria?’, per cent with assessment of ‘five years or more’: 32.8%

PERCEPTION OF MUNICIPAL RESPONSE

Per cent agreeing with the statement, ‘The municipality is doing the best it can to respond to the needs of people in this community’: 36.8%

TRUST IN INSTITUTIONS

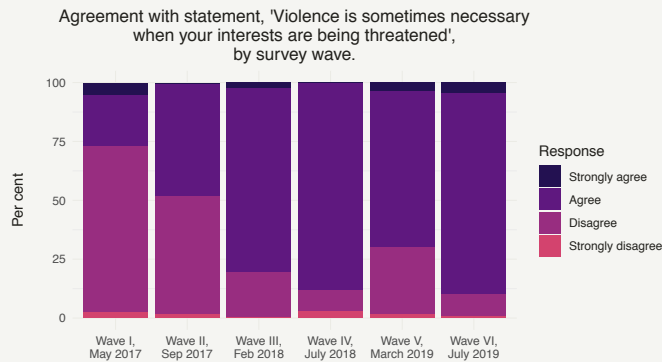
Per cent agreeing that each institution has ‘improved life a lot’ or ‘improved life somewhat’:

- The Government (Cabinet): 38.5%
- The Army (LAF): 98.2%
- Municipal authorities: 87.7%

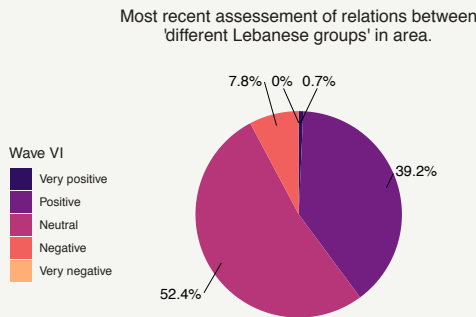
RESOURCES AND PUBLIC SERVICES

Per cent agreeing with statement, ‘The presence of so many Syrian refugees in Lebanon today is placing too much strain on Lebanon’s resources, like water and electricity’: 80.7%

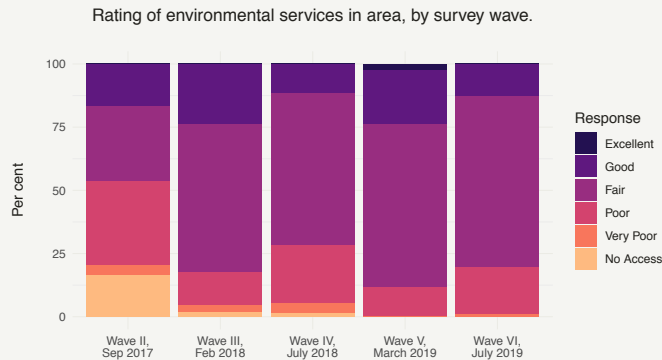
ACCEPTABLE USE OF VIOLENCE



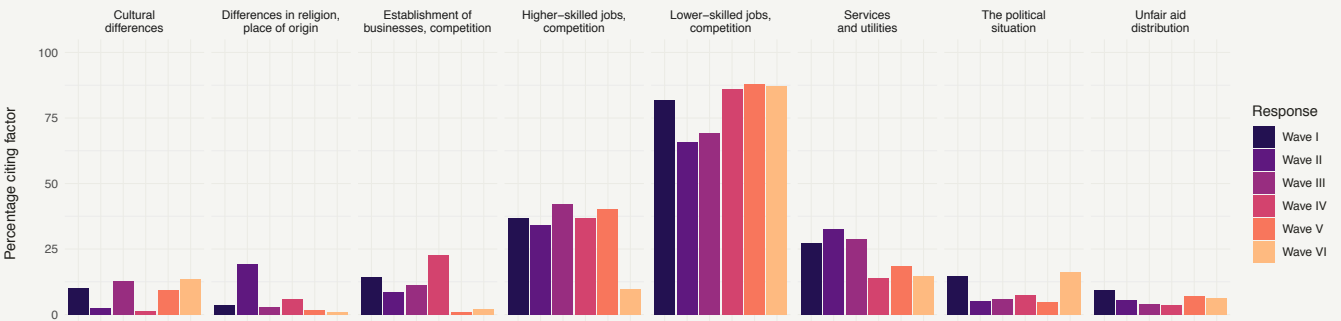
INTRA-LEBANESE RELATIONS



QUALITY OF ENVIRONMENTAL SERVICES



PERCEPTION OF TENSION FACTORS IN LEBANESE-SYRIAN RELATIONS



This fact sheet provides key statistics for Social Stability indicators in the Governorate of Baalbek-Hermel, with approximately quarterly data from May 2017 to July 2019, including interviews with 2,648 Baalbek-Hermel residents, of whom 446 (16.8%) were Syrian.

MEDIA AND POLITICS

- Per cent citing media as tension factor: 15.1%
- Per cent ‘interested’ in politics: 28.8%
- Per cent with recall of social media content related to refugee relations: 46.8%

EXPECTATIONS ON RETURN

- Per cent citing ‘return of Syrian refugees’ as a factor ‘leading to better relations’: 65.7%
- Asked, ‘how long do you think it will take for Syrian refugees to return to Syria?’, per cent with assessment of ‘five years or more’: 5.3%

PERCEPTION OF MUNICIPAL RESPONSE

Per cent agreeing with the statement, ‘The municipality is doing the best it can to respond to the needs of people in this community’: 36.2%

TRUST IN INSTITUTIONS

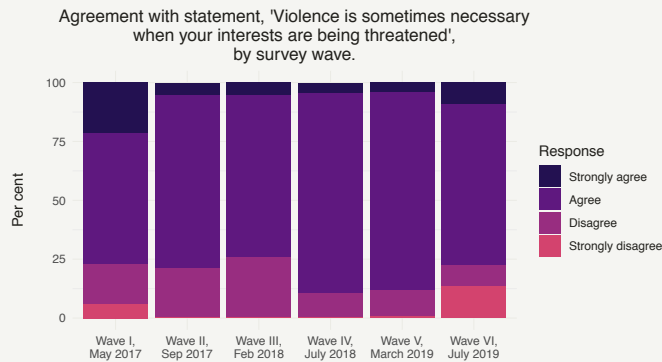
Per cent agreeing that each institution has ‘improved life a lot’ or ‘improved life somewhat’:

- The Government (Cabinet): 25.7%
- The Army (LAF): 57.2%
- Municipal authorities: 62.5%

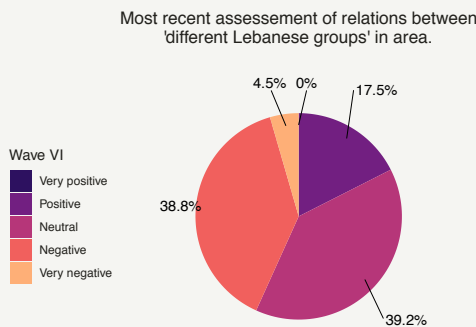
RESOURCES AND PUBLIC SERVICES

Per cent agreeing with statement, ‘The presence of so many Syrian refugees in Lebanon today is placing too much strain on Lebanon’s resources, like water and electricity’: 92.5%

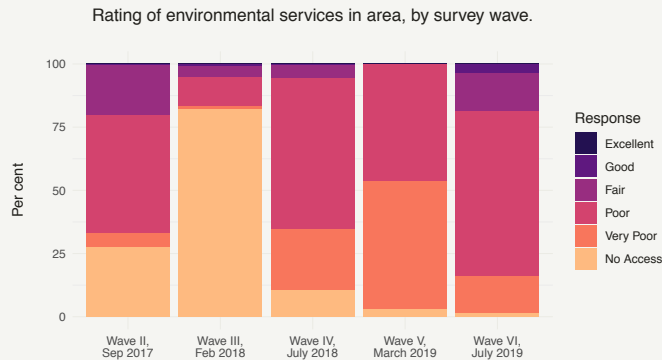
ACCEPTABLE USE OF VIOLENCE



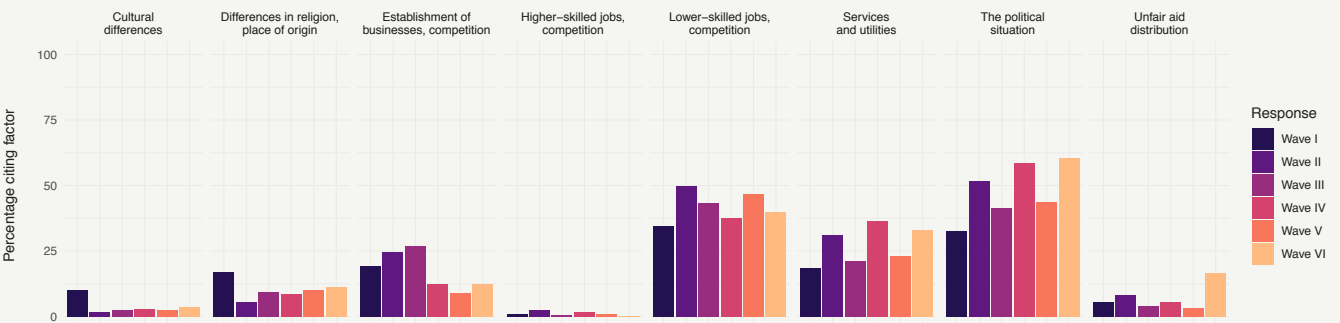
INTRA-LEBANESE RELATIONS



QUALITY OF ENVIRONMENTAL SERVICES



PERCEPTION OF TENSION FACTORS IN LEBANESE-SYRIAN RELATIONS



This fact sheet provides key statistics for Social Stability indicators in the Governorate of Beirut, with approximately quarterly data from May 2017 to July 2019, including interviews with 1,888 Beirut residents, of whom 261 (13.8%) were Syrian.

MEDIA AND POLITICS

- Per cent citing media as tension factor: 0.0%
- Per cent ‘interested’ in politics: 14.9%
- Per cent with recall of social media content related to refugee relations: 57.1%

EXPECTATIONS ON RETURN

- Per cent citing ‘return of Syrian refugees’ as a factor ‘leading to better relations’: 32.3%
- Asked, ‘how long do you think it will take for Syrian refugees to return to Syria?’, per cent with assessment of ‘five years or more’: 56.1%

PERCEPTION OF MUNICIPAL RESPONSE

Per cent agreeing with the statement, ‘The municipality is doing the best it can to respond to the needs of people in this community’: 67.6%

TRUST IN INSTITUTIONS

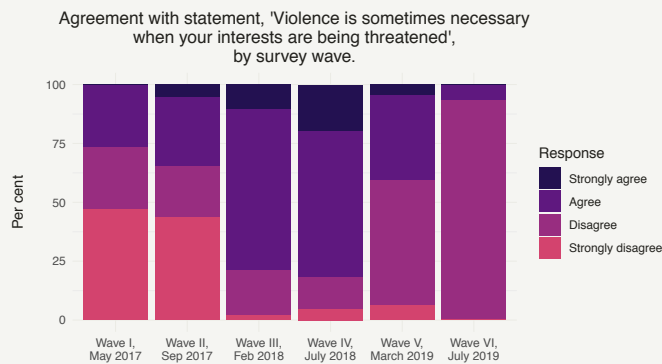
Per cent agreeing that each institution has ‘improved life a lot’ or ‘improved life somewhat’:

- The Government (Cabinet): 43.6%
- The Army (LAF): 87.5%
- Municipal authorities: 94.6%

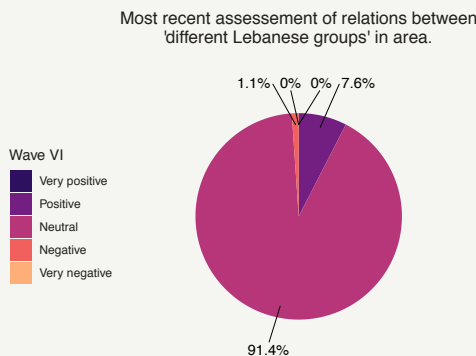
RESOURCES AND PUBLIC SERVICES

Per cent agreeing with statement, ‘The presence of so many Syrian refugees in Lebanon today is placing too much strain on Lebanon’s resources, like water and electricity’: 98.0%

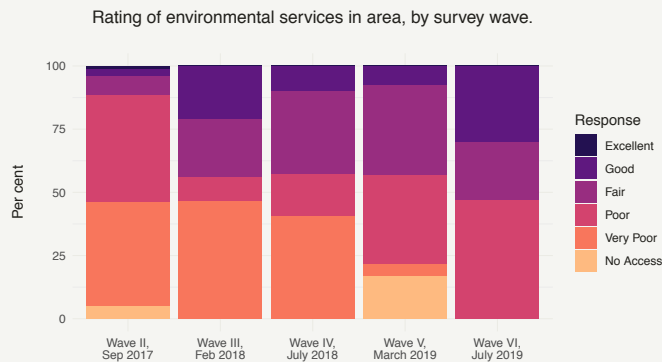
ACCEPTABLE USE OF VIOLENCE



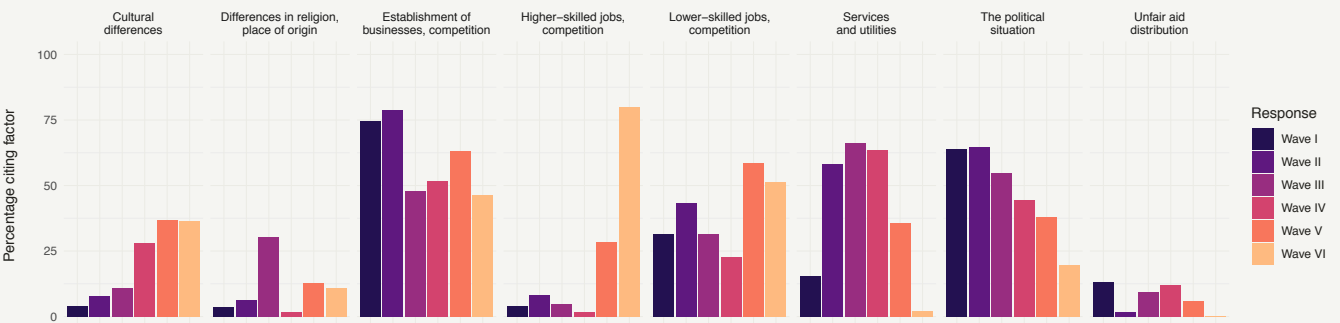
INTRA-LEBANESE RELATIONS



QUALITY OF ENVIRONMENTAL SERVICES



PERCEPTION OF TENSION FACTORS IN LEBANESE-SYRIAN RELATIONS



This fact sheet provides key statistics for Social Stability indicators in the Governorate of Beqaa, with approximately quarterly data from May 2017 to July 2019, including interviews with 3,642 Beqaa residents, of whom 528 (14.5%) were Syrian.

MEDIA AND POLITICS

- Per cent citing media as tension factor: 4.8%
- Per cent ‘interested’ in politics: 46.5%
- Per cent with recall of social media content related to refugee relations: 57.9%

EXPECTATIONS ON RETURN

- Per cent citing ‘return of Syrian refugees’ as a factor ‘leading to better relations’: 36.4%
- Asked, ‘how long do you think it will take for Syrian refugees to return to Syria?’, per cent with assessment of ‘five years or more’: 18.6%

PERCEPTION OF MUNICIPAL RESPONSE

Per cent agreeing with the statement, ‘The municipality is doing the best it can to respond to the needs of people in this community’: 70.5%

TRUST IN INSTITUTIONS

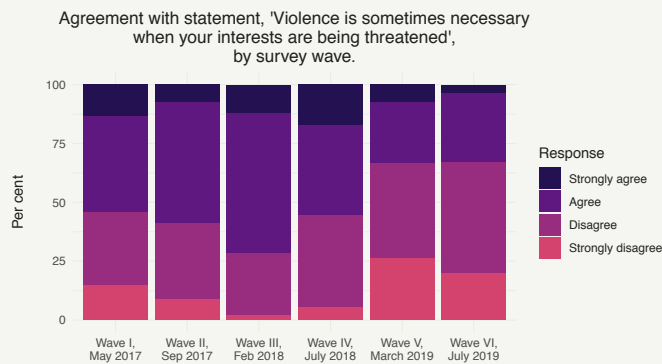
Per cent agreeing that each institution has ‘improved life a lot’ or ‘improved life somewhat’:

- The Government (Cabinet): 21.0%
- The Army (LAF): 99.6%
- Municipal authorities: 81.8%

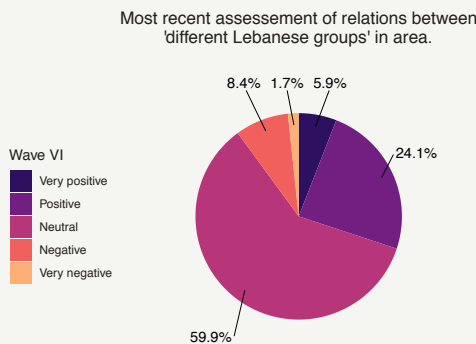
RESOURCES AND PUBLIC SERVICES

Per cent agreeing with statement, ‘The presence of so many Syrian refugees in Lebanon today is placing too much strain on Lebanon’s resources, like water and electricity’: 83.4%

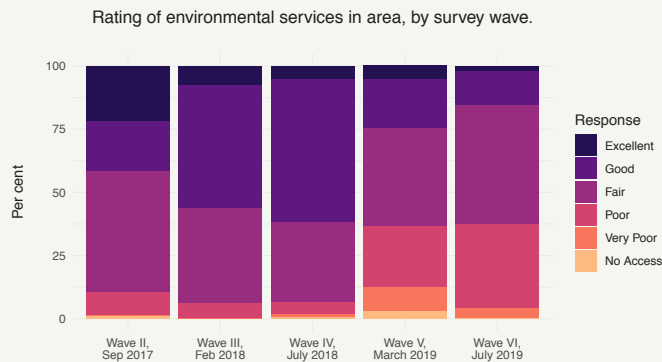
ACCEPTABLE USE OF VIOLENCE



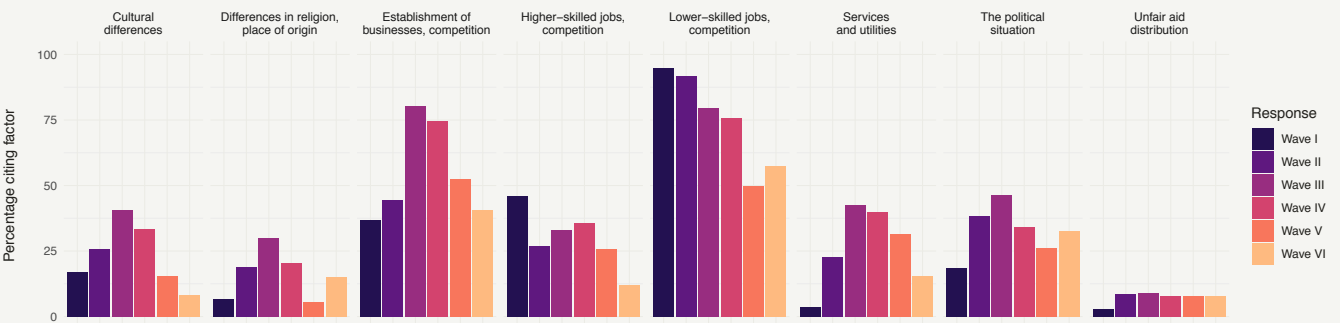
INTRA-LEBANESE RELATIONS



QUALITY OF ENVIRONMENTAL SERVICES



PERCEPTION OF TENSION FACTORS IN LEBANESE-SYRIAN RELATIONS



This fact sheet provides key statistics for Social Stability indicators in the Governorate of Mount Lebanon, with approximately quarterly data from May 2017 to July 2019, including interviews with 8,142 Mount Lebanon residents, of whom 1,048 (12.9%) were Syrian.

### MEDIA AND POLITICS

- Per cent citing media as tension factor: 8.3%
- Per cent ‘interested’ in politics: 48.8%
- Per cent with recall of social media content related to refugee relations: 60.8%

### EXPECTATIONS ON RETURN

- Per cent citing ‘return of Syrian refugees’ as a factor ‘leading to better relations’: 37.7%
- Asked, ‘how long do you think it will take for Syrian refugees to return to Syria?’, per cent with assessment of ‘five years or more’: 10.6%

### PERCEPTION OF MUNICIPAL RESPONSE

Per cent agreeing with the statement, ‘The municipality is doing the best it can to respond to the needs of people in this community’: 53.0%

### TRUST IN INSTITUTIONS

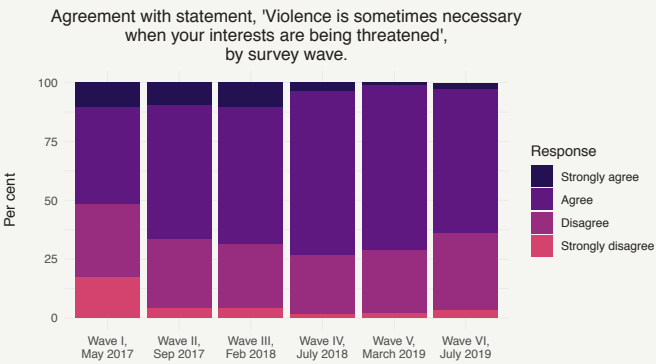
Per cent agreeing that each institution has ‘improved life a lot’ or ‘improved life somewhat’:

- The Government (Cabinet): 23.7%
- The Army (LAF): 92.8%
- Municipal authorities: 67.0%

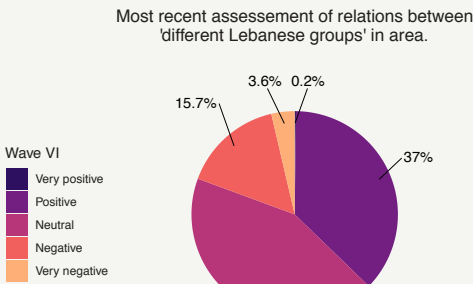
### RESOURCES AND PUBLIC SERVICES

Per cent agreeing with statement, ‘The presence of so many Syrian refugees in Lebanon today is placing too much strain on Lebanon’s resources, like water and electricity’: 93.6%

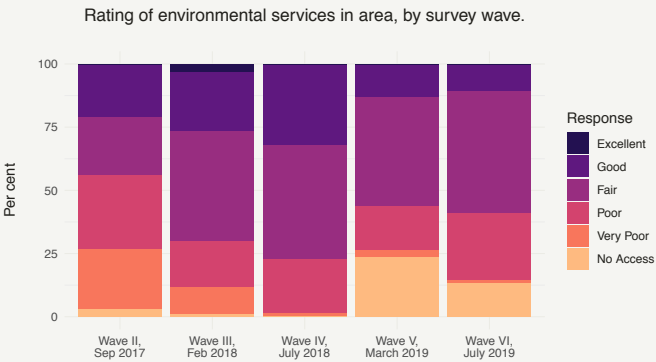
### ACCEPTABLE USE OF VIOLENCE



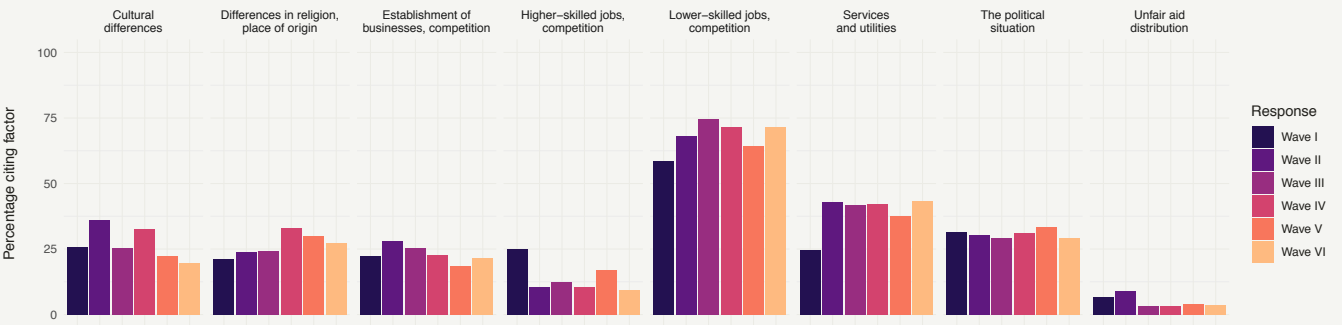
### INTRA-LEBANESE RELATIONS



### QUALITY OF ENVIRONMENTAL SERVICES



### PERCEPTION OF TENSION FACTORS IN LEBANESE-SYRIAN RELATIONS



This fact sheet provides key statistics for Social Stability indicators in the Governorate of Nabatiye, with approximately quarterly data from May 2017 to July 2019, including interviews with 2,460 Nabatiye residents, of whom 497 (20.2%) were Syrian.

MEDIA AND POLITICS

- Per cent citing media as tension factor: 2.3%
- Per cent ‘interested’ in politics: 41.2%
- Per cent with recall of social media content related to refugee relations: 59.5%

EXPECTATIONS ON RETURN

- Per cent citing ‘return of Syrian refugees’ as a factor ‘leading to better relations’: 41.2%
- Asked, ‘how long do you think it will take for Syrian refugees to return to Syria?’, per cent with assessment of ‘five years or more’: 8.9%

PERCEPTION OF MUNICIPAL RESPONSE

Per cent agreeing with the statement, ‘The municipality is doing the best it can to respond to the needs of people in this community’: 77.5%

TRUST IN INSTITUTIONS

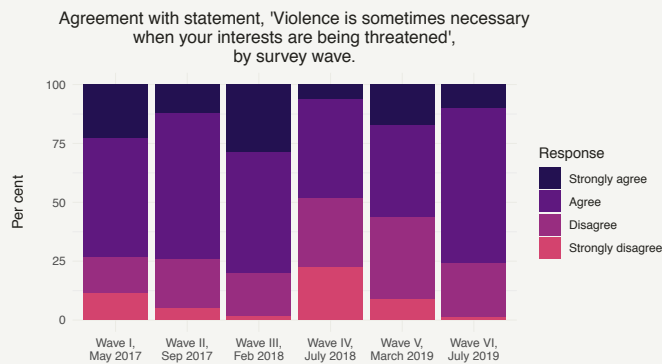
Per cent agreeing that each institution has ‘improved life a lot’ or ‘improved life somewhat’:

- The Government (Cabinet): 5.8%
- The Army (LAF): 58.1%
- Municipal authorities: 30.2%

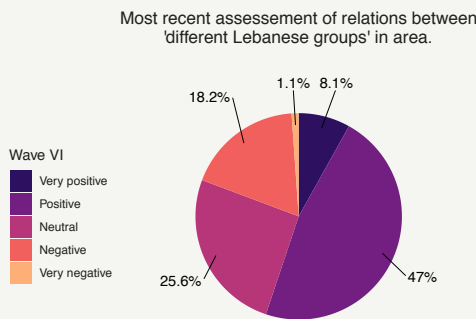
RESOURCES AND PUBLIC SERVICES

Per cent agreeing with statement, ‘The presence of so many Syrian refugees in Lebanon today is placing too much strain on Lebanon’s resources, like water and electricity’: 90.8%

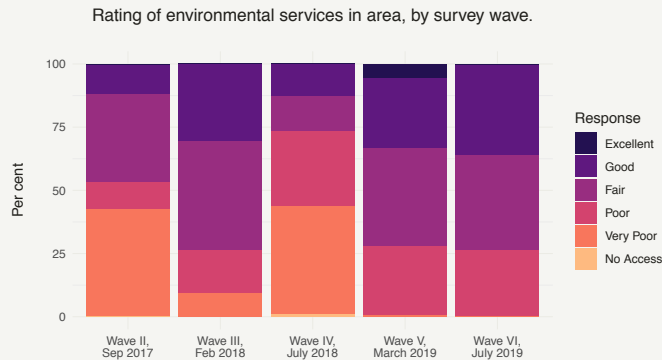
ACCEPTABLE USE OF VIOLENCE



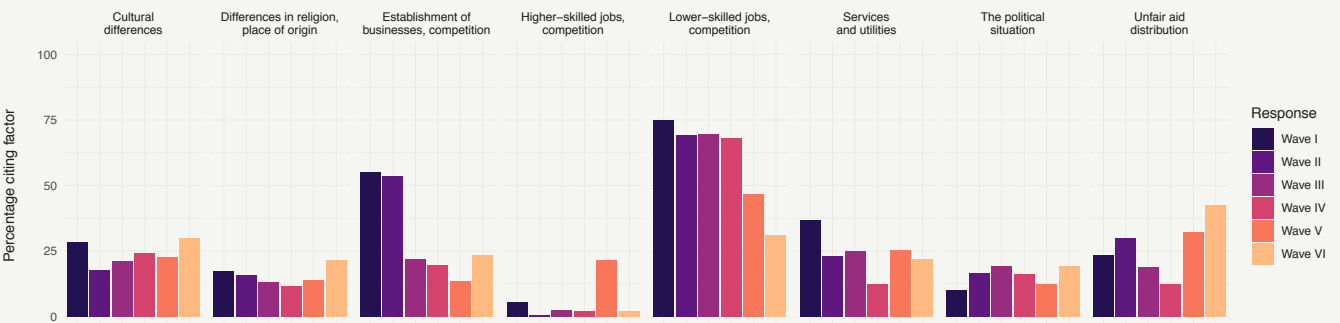
INTRA-LEBANESE RELATIONS



QUALITY OF ENVIRONMENTAL SERVICES



PERCEPTION OF TENSION FACTORS IN LEBANESE-SYRIAN RELATIONS





This fact sheet provides key statistics for Social Stability indicators in the Governorate of the North, with approximately quarterly data from May 2017 to July 2019, including interviews with 4,093 residents in the North, of whom 558 (13.6%) were Syrian.

MEDIA AND POLITICS

- Per cent citing media as tension factor: 1.5%
- Per cent ‘interested’ in politics: 51.5%
- Per cent with recall of social media content related to refugee relations: 69.2%

EXPECTATIONS ON RETURN

- Per cent citing ‘return of Syrian refugees’ as a factor ‘leading to better relations’: 60.8%
- Asked, ‘how long do you think it will take for Syrian refugees to return to Syria?’, per cent with assessment of ‘five years or more’: 7.5%

PERCEPTION OF MUNICIPAL RESPONSE

Per cent agreeing with the statement, ‘The municipality is doing the best it can to respond to the needs of people in this community’: 51.5%

TRUST IN INSTITUTIONS

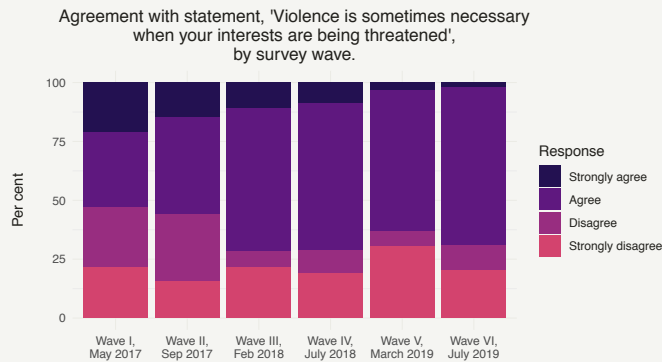
Per cent agreeing that each institution has ‘improved life a lot’ or ‘improved life somewhat’:

- The Government (Cabinet): 13.0%
- The Army (LAF): 96.6%
- Municipal authorities: 80.5%

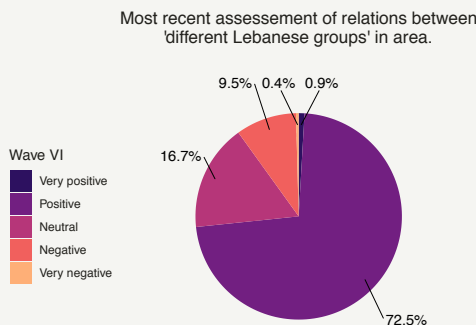
RESOURCES AND PUBLIC SERVICES

Per cent agreeing with statement, ‘The presence of so many Syrian refugees in Lebanon today is placing too much strain on Lebanon’s resources, like water and electricity’: 91.8%

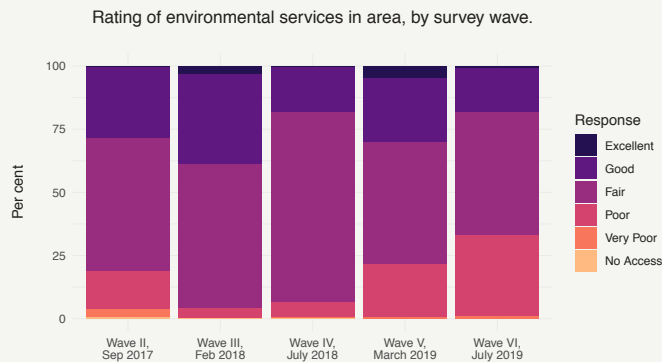
ACCEPTABLE USE OF VIOLENCE



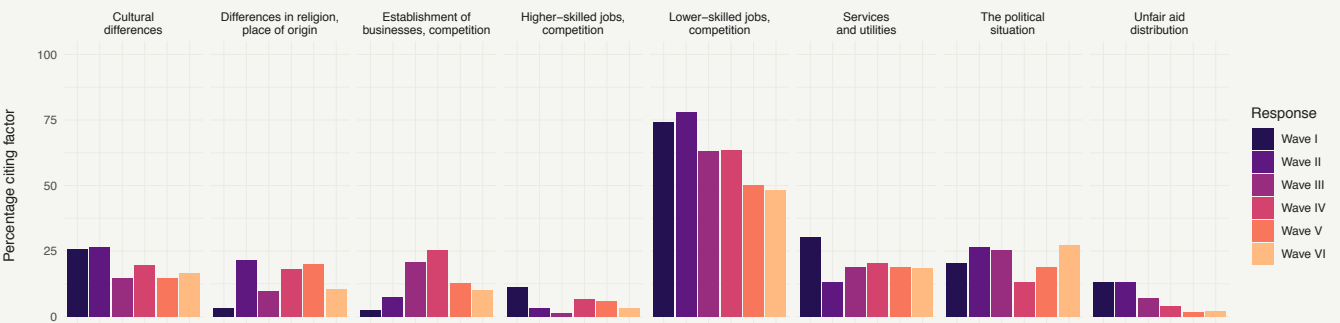
INTRA-LEBANESE RELATIONS



QUALITY OF ENVIRONMENTAL SERVICES



PERCEPTION OF TENSION FACTORS IN LEBANESE-SYRIAN RELATIONS



This fact sheet provides key statistics for Social Stability indicators in the Governorate of the South, with approximately quarterly data from May 2017 to July 2019, including interviews with 3,953 residents of the South, of whom 566 (14.3%) were Syrian.

MEDIA AND POLITICS

- Per cent citing media as tension factor: 7.3%
- Per cent ‘interested’ in politics: 56.7%
- Per cent with recall of social media content related to refugee relations: 49.8%

EXPECTATIONS ON RETURN

- Per cent citing ‘return of Syrian refugees’ as a factor ‘leading to better relations’: 49.2%
- Asked, ‘how long do you think it will take for Syrian refugees to return to Syria?’, per cent with assessment of ‘five years or more’: 18.7%

PERCEPTION OF MUNICIPAL RESPONSE

Per cent agreeing with the statement, ‘The municipality is doing the best it can to respond to the needs of people in this community’: 48.0%

TRUST IN INSTITUTIONS

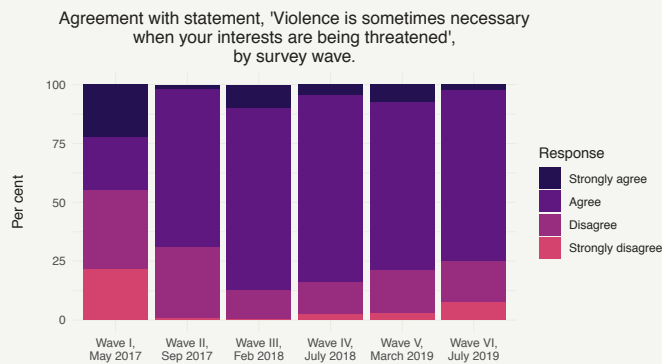
Per cent agreeing that each institution has ‘improved life a lot’ or ‘improved life somewhat’:

- The Government (Cabinet): 45.2%
- The Army (LAF): 62.6%
- Municipal authorities: 59.7%

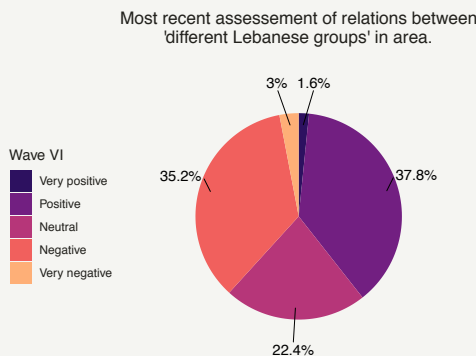
RESOURCES AND PUBLIC SERVICES

Per cent agreeing with statement, ‘The presence of so many Syrian refugees in Lebanon today is placing too much strain on Lebanon’s resources, like water and electricity’: 78.4%

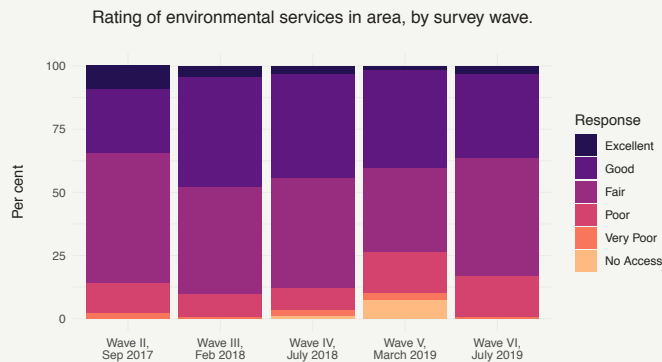
ACCEPTABLE USE OF VIOLENCE



INTRA-LEBANESE RELATIONS



QUALITY OF ENVIRONMENTAL SERVICES



PERCEPTION OF TENSION FACTORS IN LEBANESE-SYRIAN RELATIONS

