



**235,802**

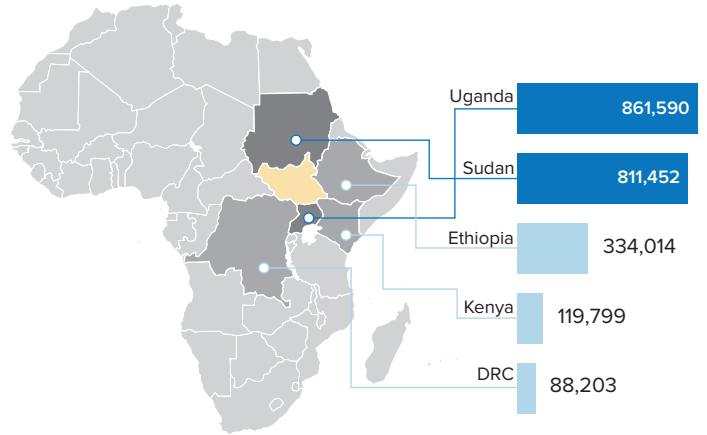
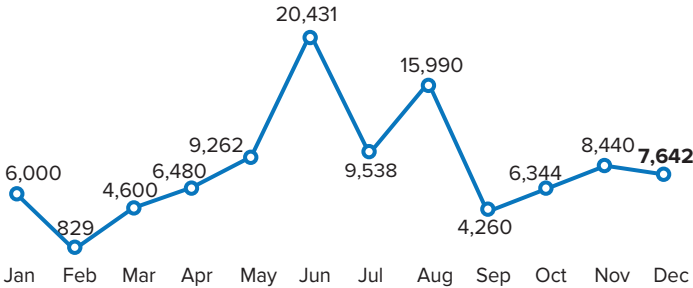
Reported number of spontaneous refugee returnees\*  
\*This number represents the total returns corroborated from November 2017 to date



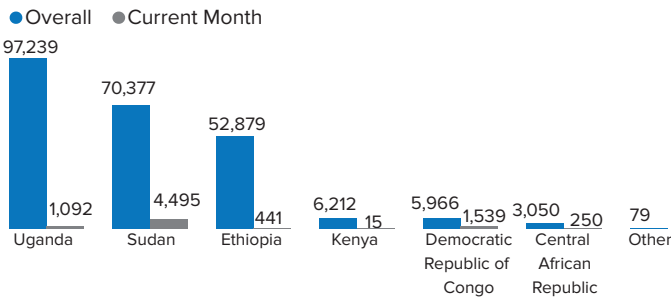
**2,215,058**

South Sudanese refugees in the region

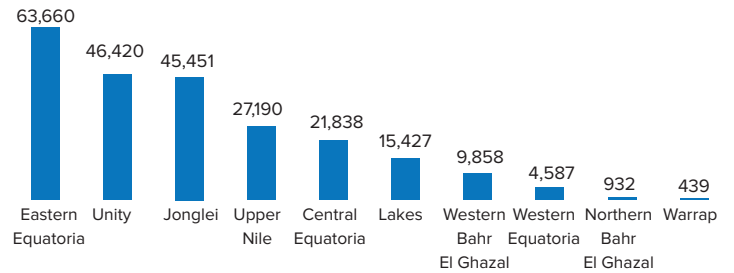
**2019 spontaneous refugee return trend (1 Jan - 31 Dec): 99,816 \*\*\***



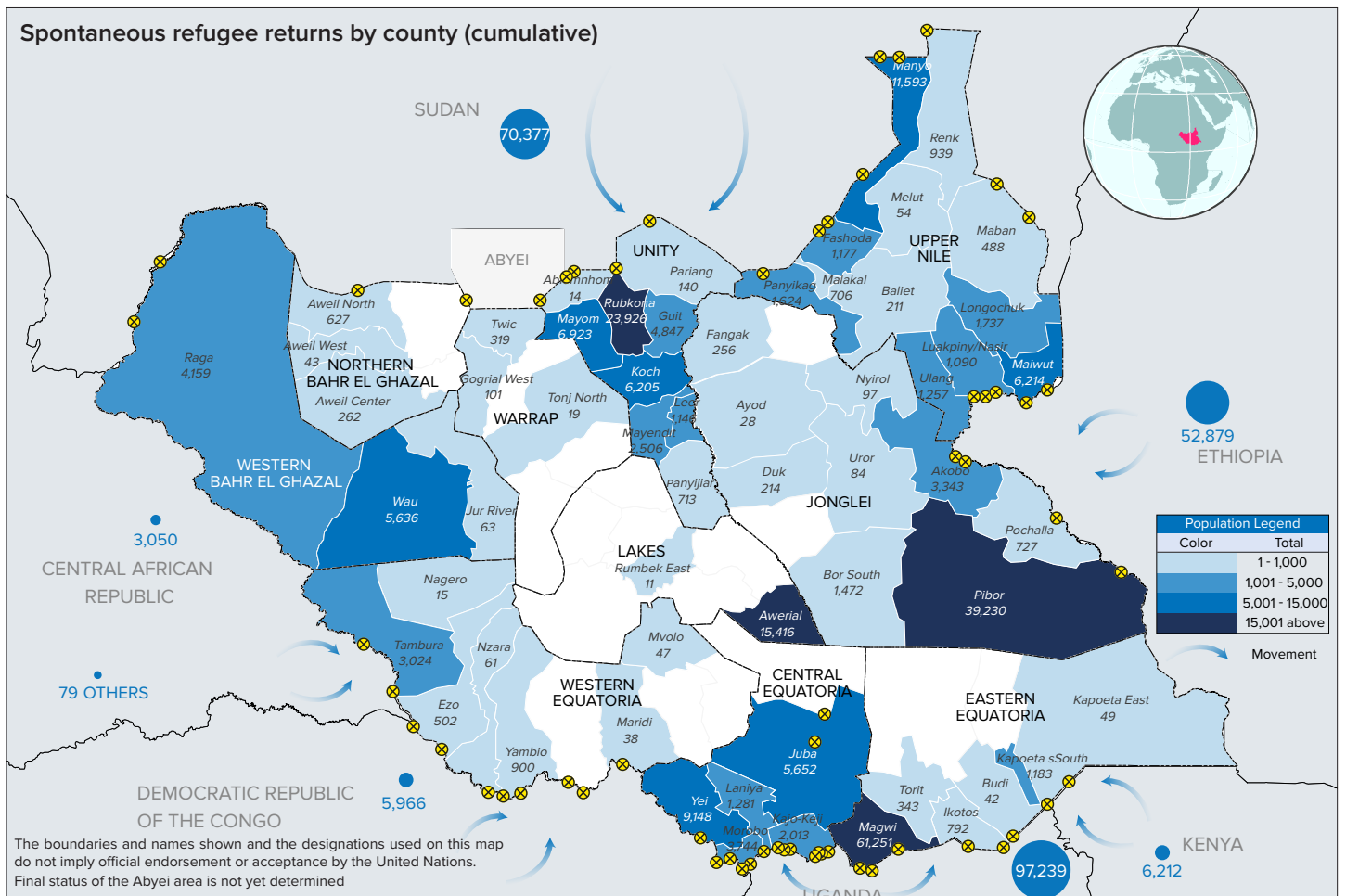
**Spontaneous refugee returnees by Country of Asylum**



**Returns by state of arrival (cumulative)**



**Spontaneous refugee returns by county (cumulative)**



\*In coordination with the office of the Relief and Rehabilitation Commission (RRC), UNHCR and its partners triangulate received reports at community level with local government authorities, religious groups, traditional leaders, civil society and community members as well as refugee returnees themselves.  
Source: Geographic data: UNHCR, UNCS, UNDP. Returnee statistics: UNHCR and partners  
Feedback: Sagun Ratna Tuladhar, Associate Operational Data Management Officer, [tuladhar@unhcr.org](mailto:tuladhar@unhcr.org)