

Democratic Republic of the Congo

1 – 31 January 2020

In January, **46 new Burundian asylum-seeker households** (121 persons) were admitted in the Kavimvira Transit Center in South Kivu Province. With all reception structures being saturated, new arrivals were however forced to wait outside.

From 10 to 16 January, UNHCR **biometrically registered 807 newly arrived Central African refugees** (249 households) in Gboko, Bosobolo Territory, Nord Ubangi Province.

On 13 January in Rome (Italy), the South Sudan Government and opposition movements committed to a **“Cessation of Hostilities Agreement.”**

Refugees

Burundian refugees

Total in DRC	Women	Men
47,496	24,451	23,045

As of 31 January 2020

- An unaccompanied Burundian refugee child living in Lusenda camp, South Kivu Province, was **voluntarily repatriated and reunified with his biological grandparents** in Burundi, following UNHCR and ICRC’s collaboration.
- UNHCR, in coordination with CNR, IOM, AIRD and AIDES, prepared for the **resettlement of nine Burundian refugees to Canada**. The refugees travelled to Kinshasa, capital of the DRC, for medical screenings and to initiate their visa process. Where possible, resettlement is one of the durable solutions for vulnerable refugees and is dependent on the availability of resettlement places.
- In January, 46 new Burundian asylum-seeker households (121 persons) were **admitted in the Kavimvira Transit Center** (TC). With all reception structures being saturated, new arrivals were forced to wait outside the TC. Due to road conditions, the transfer of asylum-seekers and refugees to Mulongwe settlement was delayed. To date, 2,389 persons (862 households) are accommodated in Sange Assembly Point, Kavimvira TC, and Mongemonge TC, although the total capacity is 2,100. Among them, **1,912 asylum seekers** await their Refugee Status Determination (RSD).
- Several **incursions by armed individuals into Lusenda camp** in January threatened the civilian character of asylum. UNHCR discussed the issue with the police, the army and CNR, and reinforced security measures at entry points.
- Due to heavy rain, the **road between Uvira and Baraka has further deteriorated**, seriously hampering UNHCR’s and partners’ activities at Lusenda refugee camp.
- UNHCR’s partner ActionAid **constructed a new nursery school** for Burundian refugee children aged 3 to 5 in Lusenda camp, with a capacity of 200 children. Nursery school prepares children for primary school, and reinforces their development and protection.



New nursery school for 200 children in Lusenda camp, South Kivu Province. © ActionAid/J. Olinde

- UNHCR's partner AIRD **rehabilitated 1,500 shelters** that were damaged by weather conditions in 2019 in Lusenda camp. Evaluations are in progress to identify additional shelters that were damaged following heavy rains and winds in the Lusenda area.
- UNHCR **donated medical equipment and supplies** to the Nundu General Hospital in Fizi Territory, which provides health care to the 30,000 refugees living in Lusenda camp, as well as to the host population. The surgery, laboratory, labour and birthing equipment will help improving the quality of healthcare provided at the hospital.
- With UNHCR's support, refugee committees on Sexual and Gender-Based Violence (SGBV) organized six workshops for 458 Burundian refugees in Lusenda camp and Mulongwe settlement, to **raise awareness on the prevention of SGBV and HIV/AIDS**. Male participants in Mulongwe recommended that UNHCR provide male condoms and raise awareness on the use of contraceptives and family planning. UNHCR and partners are also working on improving reporting systems for victims of sexual violence.
- UNHCR and partner ActionAid made a **cash donation to the eight primary schools** in Lusenda camp and Mulongwe settlement, to respond to the schools' operational needs.
- UNHCR's partner ActionAid facilitated the **payment of school fees for 1,741 secondary school refugee pupils** for the first quarter of the 2019-2020 school year, to allow them attend classes in Lusenda and Mulongwe.

Central African refugees

Total in DRC	Women	Men
171,400	91,648	79,752

As of 31 January 2020

- From 10 to 16 January, **UNHCR biometrically registered 807 Central African refugees** (249 households) who arrived in Gboko, Bosobolo Territory, Nord Ubangi Province, in December 2019. This is 75% of the 1,181 refugees who had been pre-registered in the area – many had gone back to the CAR due to difficult living conditions in the DRC. UNHCR will provide WASH, shelter and non-food item (NFI) assistance in three villages, where refugees will be relocated so that they can live at a safe distance from the border.
- UNHCR and partners resumed **surveys on Central African refugees' intentions in terms of voluntary repatriation** from all camps, and initial results showed growing wishes to return. A total of 6,282 refugees already expressed their desire to return, in addition to the estimated 300 who expressed this intention last year. In 2019, UNHCR already facilitated the voluntary repatriation of 3,133 refugees from Mole and Boyabu camps (Sud Ubangi Province). UNHCR needs increased funding to facilitate further voluntary repatriations in safety and dignity.
- On 16 January, **a fire broke out at the health center of Bili refugee camp**, likely caused by a bushfire. Two tarpaulin buildings with a capacity of 12 beds, as well as one warehouse, were destroyed. The buildings contained a laboratory, the equipment of which was destroyed. The maternity ward remained intact. UNHCR has raised temporary infrastructures to enable refugees to continue receiving health care, however more funds are needed to replace the lost equipment and ensure quality healthcare for the 9,500 refugees in the camp.
- UNHCR continued **assisting victims of recent floods** in Nord and Sud Ubangi provinces. In Bosobolo Territory, Nord Ubangi Province, 590 refugee and local households received cash assistance, bringing to 4,001 the total of affected households who received cash assistance since December. Meanwhile, 488 other households, including 250 with specific needs, received non-food item (NFI) kits in Nord and Sud Ubangi provinces, bringing to 1,600 the total number of affected households who received NFIs since December.



A Central African refugee blacksmith makes buckets in Bili camp, to cater for his family. He has taught his skills to other members of the community, who now also have a reliable source of income.

© UNHCR/Clariss Achu

- In January in Mole camp, Sud Ubangi Province, groups of refugees and locals started receiving **bakery, tailoring and carpentering training** from UNHCR's partner AIDES, with the aim of enhancing their livelihoods opportunities. They also received kits to help them start their own businesses.
- To improve access to education for both refugees and locals in refugee-hosting areas, UNHCR **handed over two new classrooms** to the nursery school at the Oblates Sisters' Convent in Libenge, close to Boyabu camp, Sud Ubangi Province. Six other primary school classrooms had previously been handed over. The convent hosts unaccompanied Central African refugee children, most of whom were educated at the convent with support from UNHCR.
- UNHCR supported local communities in **constructing eight new classrooms** in Bili camp, Nord Ubangi Province, in order to offer adequate classroom space for refugee and local children, many of whom were studying under trees, exposed to the weather. The communities molded the mud blocks and carried out the works, while UNHCR provided aluminum sheets, and other materials that were not locally available. The new classrooms however still lack benches and other furniture.

Rwandan refugees

Total in DRC (figure based on a pre-registration done by the DRC Government)	Repatriated this month (figure pending verification)	Repatriated in 2020 (figure pending verification)
214,777	212	212
Women: 108,015 Men: 106,762		

As of 31 January 2020

- In January, **195 Rwandan refugees were repatriated** in safety and dignity to Rwanda (56 women, 51 girls, 45 boys and 43 men). UNHCR also **reunited 5 unaccompanied refugee children** with their families in DRC.
- In South Kivu Province, **Kalehe Territory hosts a high number of Rwandan refugees**, many of whom were displaced by fighting in southern North Kivu Province. Similarly to the Rwandan refugees who were refouled to Rwanda in December, they remain at risk if they are also considered part of the entourage of the CNRD or FDLR armed groups.

South Sudanese refugees

Total in DRC	Women	Men
88,876	47,447	41,429

As of 31 January 2020

- On 13 January in Rome (Italy), the South Sudan Government and opposition movements **committed to a "Cessation of Hostilities Agreement,"** which was however violated on 25 January, in a location close to the DRC border. UNHCR is expecting renewed flows of refugees from South Sudan if hostilities continue. In January, 190 new arrivals were recorded.
- In January, 111 persons (136 households) were **relocated to the new Bele settlement** (Haut-Uele Province), both from the overcrowded Meri settlement, and from unsafe border areas. This brings the total of persons relocated to Bele to 1,307 (532 households) since September 2019.
- Since December 2019, UNHCR had been **out of anti-malarial medication** for South Sudanese refugees, although malaria is the leading cause of mortality in the area. On 15 January, UNHCR received essential drugs and antimalarials to cover the first trimester of 2020, although additional deliveries are needed to cover the rest of the year.

- In January, UNHCR and partner ADES recorded **239 new cases of malnutrition** in all South Sudanese refugee settlements; 5 cases of severe acute malnutrition, 176 cases of moderate acute malnutrition, 26 pregnant and lactating women, and 32 people living with AIDS. This brings to 2,201 the total number of people enrolled in UNHCR's nutrition program in South Sudanese refugee settlements, including 276 children. Additional nutritional inputs are needed to respond to their needs.
- In Biringi and Meri settlements, **school kits were distributed to 5,506 pupils** in 14 primary schools, including 919 Congolese pupils of the host community.
- In January, **21 refugee newborns were registered** at the civil registry within the deadline for them to receive birth certificates. UNHCR provides material support to Civil Registration offices to facilitate registrations.
- In January, UNHCR's partner ADES **sensitized 2,457 people on diseases with epidemiological potential**, mainly Ebola and the Coronavirus.



*In Biringi settlement, Ituri Province, South Sudanese refugee pupils and Congolese pupils receive school kits from UNHCR.
© UNHCR/Isaac Ndifor*

Congolese returnees

- The **organized voluntary repatriation** of Congolese refugees from Lóvua settlement in Angola was still on hold in January, due to adverse road and weather conditions. The repatriations, interrupted in December 2019, are set to resume in February 2020.

Urban refugees

- In 2019, UNHCR's partner AIDES provided **cash assistance for income-generating activities** to 50 vulnerable urban refugees in Goma, provincial capital of North Kivu, such as persons with chronic diseases, persons with disabilities, and elderly persons.
- UNHCR and partners CNR and AIDES provided **cash assistance to 27 vulnerable urban refugee households** in Bukavu, South Kivu Province, including refugees whose houses were destroyed by rain and refugees with specific needs, a majority being women.
- UNHCR's partner AIDES enrolled 20 young urban refugees from Bukavu, South Kivu Province, into a **vocational training programme** aimed at promoting self-reliance.

Internally Displaced Persons (IDPs)

Ituri Province

- **Armed clashes in Djugu, Irumu, Mahagi and Mambasa territories** continued to pose a danger to communities. Several dozen persons fled villages in Djugu Territory, although they had just come back from displacement. They fled towards displacement sites, which themselves were overcrowded, forcing them to move again.
- According to UNHCR's partner Caritas, an estimated **1,553 households arrived in the displacement sites of Rho, Bule and Drodro**, as well as in host families around Drodro, since the start of the latest crisis. An informal displacement site was also created in Tchukpa, a locality close to Lake Albert, where some 1,500 people are reported to have settled.
- In areas hit by massive displacement since mid-2019, namely Drodro and Bule (Djugu Territory), and Bunia, Tchomia and Kasenyi (Irumu Territory), UNHCR carried out **needs assessments based on age, gender**

and diversity. The 237 displaced persons and members of the host community who participated flagged poor access to food, limited sources of income, a lack of schooling, a lack of resources for medical care, and precarious living conditions in emergency shelters.

- Alleged members of the ADF armed group have reportedly **moved from Beni Territory (North Kivu Province), to Mambasa and Irumu territories (Ituri Province)**, amidst ongoing military operations against them, and have allegedly carried out several attacks against civilians.
- In January, 494 displaced households (2,175 persons) were **relocated from the General Hospital displacement site to the new Kigonze site** in Bunia. This brings to 1,262 households (5,854 people) the total relocated since November 2019. The relocated households also received non-food item (NFI) kits composed of blankets, sleeping mats, 10-liter jerry cans, laundry and soaps, and menstrual hygiene kits.
- In January, **615 emergency shelters** were built at the new Kigonze displacement site in Bunia, bringing to 1,615 the total number of emergency shelters built since the start of relocations in November 2019.



New arrivals at the Kigonze displacement site in Bunia, Ituri Province. © UNHCR/I. Bystrytska

North Kivu Province



Displaced persons staying in schools in Nobili, North Kivu Province, due to the lack of available shelter. © UNHCR/Hanson Tamfu

■ A **military operation in Beni Territory (North Kivu Province) and southern Ituri Province** triggered both displacements and retaliations by armed groups against villagers accused of supporting the army. The Kivu Security Tracker (KST), a civil society organization, estimated that 200 civilians were killed in Beni Territory in January.

■ Consequently, **tens of thousands of people were displaced from the north and north east of Beni Territory**, and are now in the towns of Beni, Butembo, Kasindi and Oicha, where communities are offering immediate assistance. Many were victims of human rights violations such as lootings, murders, kidnapping or extortion, and need multisectoral assistance. UNHCR and the humanitarian community are conducting assessments.

■ In and around Nobili, in Beni Territory, the security situation stabilized after attacks by alleged members of an

armed group in Kamango led to the displacement of some 150,000 people to Nobili in November and December 2019. **UNHCR started providing shelter and protection**, and is supporting local authorities in gathering statistics on the number of displaced persons, and prioritising needs.

- In Masisi Territory, some **398 households** (1,791 individuals) were reportedly displaced, some towards host families and others to the displacement site of Kivuye. Humanitarian assistance is planned for February.
- Armed groups that control north-eastern Masisi have been **restricting residents' movements and violently imposing illegal taxes**. This has prevented residents from accessing medical care and other services. Advocacy for the DRC Government to reinforce civilian authority and police presence is ongoing.
- In response to the arrival of over 150,000 displaced people in Nobili, who fled attacks in Watalinga Chiefdom in December 2019, UNHCR lead the design of a harmonized data collection tool to set up a **common database for all actors** on the ground. 70 data collectors were trained, including the three community protection structures who are involved in identifying IDPs and people with specific needs.
- In 2019, **a total of 2,080 shelters made of local materials, and 1,089 communal latrines**, were completed by UNHCR's partner AIDES in North Kivu Province's Masisi, Lubero and Rutshuru territories for IDPs who returned to their areas of origin. Another **2,348 emergency shelters** were built for IDPs in Masisi, Rutshuru and Lubero territories.

- In addition, AIDES completed the construction of **20 community dormitories** to accommodate 120 displaced households, as well as **eight classrooms** to expand the school capacity in Oicha, Beni Territory.
- In late January, UNHCR launched **participatory assessments based on age, gender and diversity** in Beni, Lubero and Masisi territories. A total of 32 focus group discussions were held with displaced persons, returnees and repatriates from Uganda. Participants explained the protection risks they are facing, their root causes, and suggested local solutions.

South Kivu Province

- Inter-community conflict continued in the Fizi highlands. In Kalehe Territory, a military operation against the CNRD-FDLR armed group, which started in November 2019, continued in January. According to a UNHCR assessment, **3,625 households (some 15,000 persons) were displaced** between Bushaku and Katasomwa (Kalehe Territory) as a result. While the majority are hosted in communities, 774 families have gathered in three informal sites.
- UNHCR's **community-based protection** programmes are ongoing in Kalehe Territory, and UNHCR is planning to provide shelter assistance and non-food items (NFIs) to those residing in informal sites.
- According to UNHCR's partner Caritas, over **35,000 people have fled from Kabambare Territory** (Maniema Province) towards three localities in South Kivu Province and five in Maniema Province. This is a consequence of fighting between the army and a militia. OCHA and UNHCR are preparing a multi-sectoral assessment mission in the main displacement areas.
- UNHCR's partner AVSI launched **Quick Impact Projects (QIPs)** for displaced persons in Kimbi-Lulenge and Nundu Health Zones, Fizi Territory, and in Lemera and the Ruzizi plains in Uvira Territory. The 17 projects support **community protection structures** and **IDP committees** for them to strengthen community-based protection mechanisms.
- Out of 1,000 shelters and 1,000 latrines planned in 2019 for UNHCR's shelter project in Kazimia-Kikonde, **only 358 shelters were constructed**, due to a lack of access linked to degraded roads. The project has been extended into 2020 to complete the constructions.



The classrooms constructed by UNHCR's partner AIDES for displaced children in Oicha, North Kivu Province. © AIDES/S. Muhigwa



Non-food item distribution in Kalemie, Tanganyika Province. © UNHCR/Aline Irakarama

Kasai region

- From 13 to 31 January, UNHCR carried out an **evaluation of the needs of displaced persons, returnees, those expelled from Angola, and repatriates** in Kasai, Kasai Central and Kasai Oriental provinces, using an approach based on age, gender and diversity. In Kasai Province, the evaluation revealed a still-preoccupying protection environment, due to insufficient means of subsistence, a lack of documentation, a lack of access to education, sexual and gender-based violence, peaceful coexistence issues, property rights issues, impunity, and reinsertion issues for former members of armed groups.

- UNHCR **provided NFI kits** composed of kitchen kits, mosquito nets and jerrycans, to 100 households from two communities (50 from each community) in Katende, Kasai Central Province, after tensions rose between them due to forest exploitation.

Tanganyika / Haut-Katanga Provinces

- From 22 to 29 January, UNHCR and partners AIDES and AIRD **distributed non-food items (NFIs) to 8,008 returnees** (1,579 households) in eight villages north of Kalemie, Tanganyika Province. The kits included blankets, mats, kitchen utensils, mosquito nets, jerrycan and tarpaulins. They responded to the needs of returnees who have lost their belongings, or at times their homes, and who need reintegration support.
- In December, UNHCR's partner INTERSOS **recorded 1,707 human rights violations in Tanganyika and Haut-Katanga provinces**; a sharp increase compared to the 636 incidents recorded in November, probably due to a resurgence of targeted human rights violations perpetrated by militias in Nyunzu Territory, which

revived inter-community tensions. Nyunzu Territory was by far the most affected, with 1,614 incidents, while violations of the right to property represented 89.5% of the total. Sexual and Gender-Based Violence remained a significant issue, with 71 recorded cases.

- In Lualaba Province, UNHCR participated in a joint assessment mission to evaluate the needs of an **estimated 13,000 Congolese persons who were expelled from Angola** to Kapanga, Dilolo and Sandoa territories since October 2018, according to the DRC's migration authorities. Malnutrition was the biggest issue, while other needs included health, shelter, education, WASH and non-food items. The mission recommended to use a community-based approach to assistance, to ensure the respect of the “do no harm” principle.

Clusters and Working Groups

Protection Cluster

- On 10 January, the Protection Cluster published a [note](#) by UNHCR and INTERSOS on the **protection situation in Nyanzale** (Rutshuru Territory, North Kivu Province) and its surroundings. Recommendations were to launch a large-scale multisectoral assistance programme on the Mweso-Nyanzale axis, and to find urgent solutions for the 16 former child soldiers present in Nyanzale.
- On 15 January, the Protection Cluster published an [analysis](#) by UNHCR and INTERSOS on the **protection situation in Irumu and Djugu territories** (Ituri Province). The urgent needs highlighted were cash and food, security, menstrual hygiene kits for women and girls, PEP kits for rape survivors, non-food items, and health and education support.
- On 22 January, the Protection Cluster shared a [note](#) by UNHCR and INTERSOS on **newly-arrived displaced persons in the IDP sites of Rho and Drodro**, Djugu Territory, Ituri Province. The main reported needs were shelter and NFIs, food, protection of civilians (for fear of attacks by armed men), and health. The biggest challenge for the delivery assistance was however the withdrawal of humanitarian actors from the area since 14 January, due to insecurity.
- On 30 January, the Protection Cluster shared the [2019 trends in terms of human rights violations](#) recorded by UNHCR's partner INTERSOS. A total of 53,784 protection incidents were recorded between January and December 2019 – a decrease compared to the 75,082 incidents recorded in 2018. The DRC was affected by three types of threats: armed conflict, criminal activities, and social unrest in Ituri and North Kivu provinces. The analysis showed that despite a change in state leadership in DRC, the protection environment remained unstable, particularly in provinces rich in natural resources. Eastern DRC was the most affected by human rights violations, particularly South Kivu (26.1% of incidents) and North Kivu (25.9%).
- On 31 January, the Protection Cluster shared an [alert](#) from INTERSOS on the security and protection situation in Mahagi Territory (Ituri Province). The alert highlighted an **armed incursion in the village of Jalusene** on 30 January at night, which led an estimated 90% of the village's inhabitants to flee.
- In response to intensified attacks against civilians in Nyabiondo (Masisi Territory) at the end of 2019, the **Protection Cluster**, along with ICRC and Geneva Call, worked with Congolese authorities to reinforce the protective environment for civilians, through awareness-raising and advocacy for the **implementation of international humanitarian law**.
- From 28 to 31 January, the Protection Cluster evaluated the protection situation in Katende (Kasai Central Province), following **tensions between two communities related to forest exploitation**. UNHCR provided NFI kits (kitchen kits, mosquito nets and jerrycans) to 100 households (50 from each community).

Shelter Cluster

- In January, the **Shelter Cluster was formally activated** in DRC, with UNHCR as its lead, and UNICEF as the lead of the Non-Food Items (NFI) Working Group.

External / Donor Relations

As of 6 February 2020

UNHCR, the UN Refugee Agency is grateful for the support of:

Donors for UNHCR operations in DRC in 2019

United Nations Foundation (0.32 M) | International Olympic Committee (0.23 M) | European Union (0.17 M)

Major donors of regional or other funds with soft earmarking 2019

Germany (8.4 M) | Canada (2.3 M)

Major donors of un-earmarked funds in 2019

Sweden (76.4 M) | Norway (41.4 M) | Netherlands (36.1 M) | Denmark (34.6 M) | United Kingdom (31.7 M) | Germany (26.4 M) | Switzerland (16.4 M)

Contacts

Johannes van Gemund, Senior External Relations Officer, – UNHCR Representation Kinshasa, DR Congo, gemund@unhcr.org, tel: +243 996 041 000, +243 817 009 484

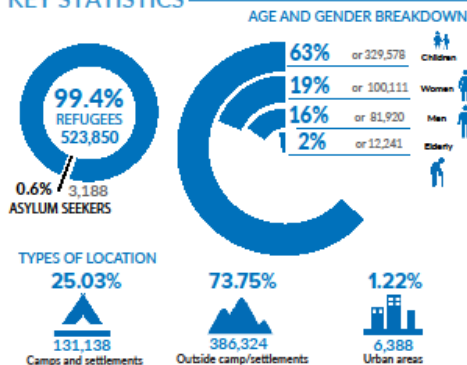
Alexandra Stenbock-Fermor, Associate External Relations and Reporting Officer, – UNHCR Representation Kinshasa, DR Congo, stenbock@unhcr.org, tel: +243 996 041 000, +243 822 253 121

[DR Congo Emergency page](#) | [UNHCR DRC operation page](#) | [Facebook](#) | [Twitter](#)

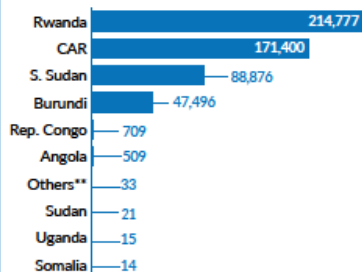
527,038

TOTAL NUMBER OF REFUGEES AND ASYLUM SEEKERS

KEY STATISTICS



REFUGEE POPULATION BY COUNTRY OF ORIGIN

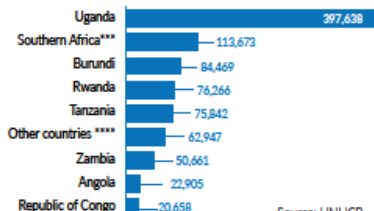


**Others include Ivory Coast, Eritrea, Syria, Liberia, Chad, etc.

REFUGEES FROM DRC IN AFRICA

905,059*

TOTAL DRC REFUGEE POPULATION

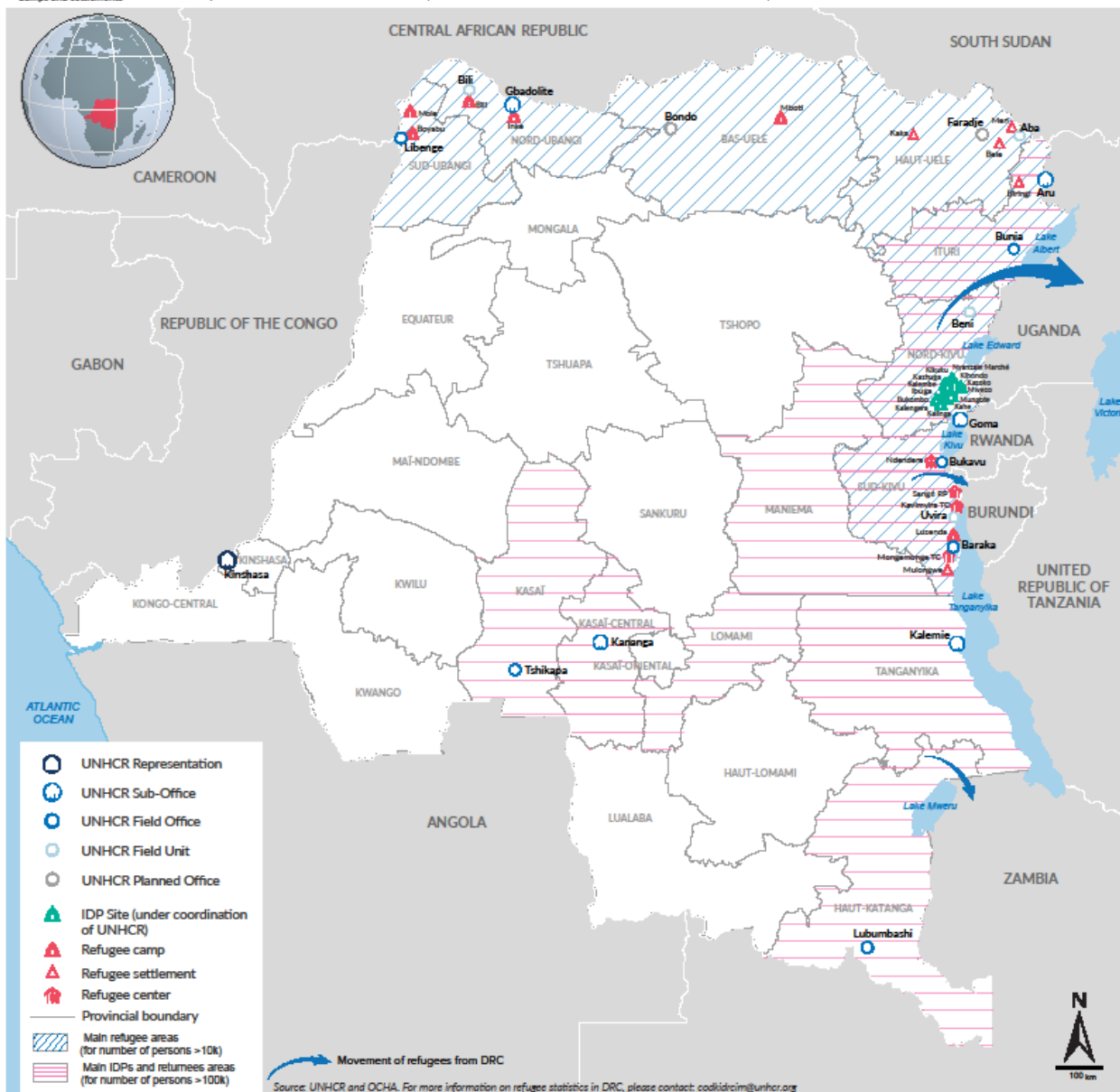


Source: UNHCR

* These figures are those of December 2019, the figures for January 2020 are not yet available.

*** Southern Africa includes Namibia, Botswana, Lesotho, Malawi, Zimbabwe, Mozambique, Madagascar, South Africa and the Kingdom of Eswatini.

**** Other countries include South Sudan, Kenya, Central African Republic and Chad.



The boundaries and names shown and the designations used on this map do not imply official endorsement or acceptance by the United Nations.

Printing date: 24 February 2020 Author: UNHCR - Kinshasa