

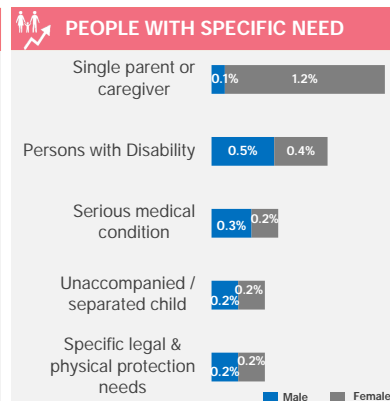
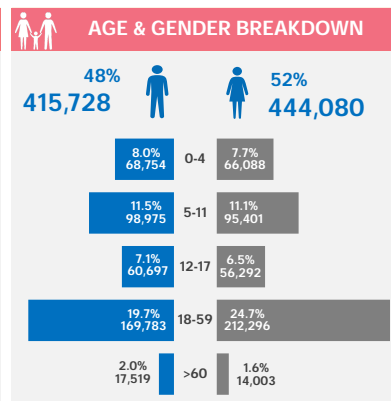
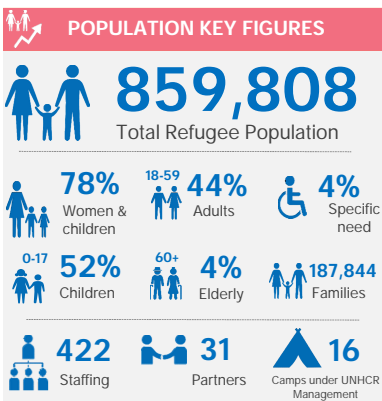
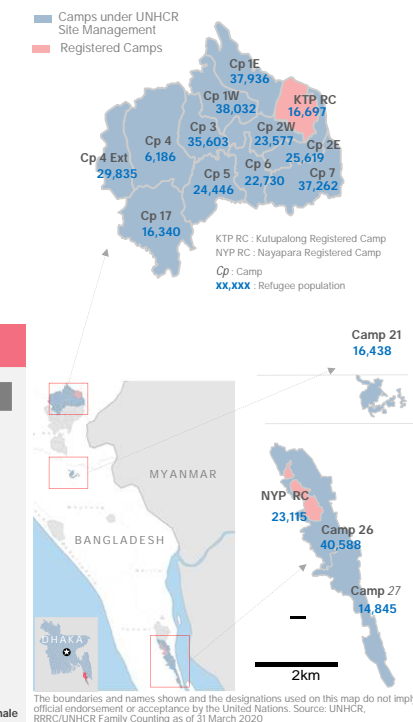
SITUATION OVERVIEW

More than 859,000 Rohingya refugee women, men, girls and boys are hosted in Cox's Bazar District, including 35,060 registered refugees who arrived in the 1990s (4%), and other unregistered Rohingya refugees who had settled in host communities prior to August 2017. Children make up 52% of the total refugee population and women and girls make up 51%.

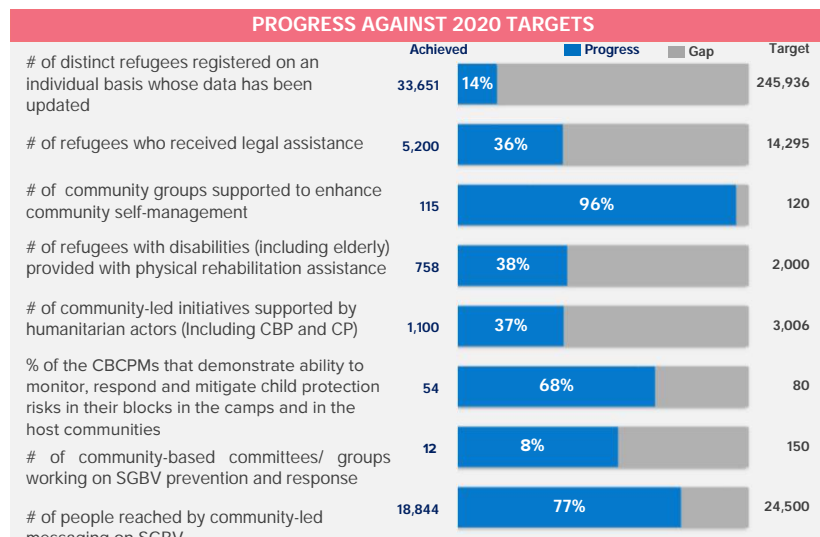
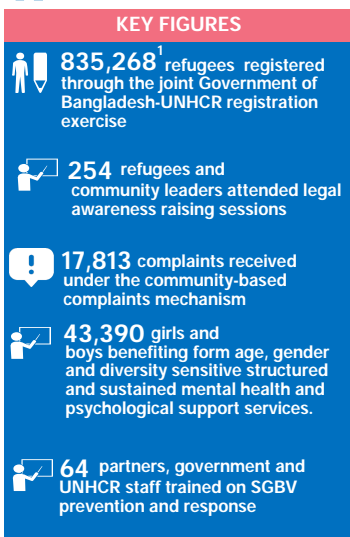
The humanitarian crisis of Rohingya refugees has intensified by the spread of the COVID19 in the country and the world. While there are still no confirmed cases of COVID19 in the Rohingya refugees camps, UNHCR continues preparedness and response efforts focusing on Health, WASH and risk communication and community engagement despite the lockdown and reducing footprint in the camps since end of March consistent with the Government's public health policies.

This dashboard monitors the monthly achievements of selected indicators from the 2020 country operations plan for each strategic area of activity with cumulative key figures and monthly highlights.

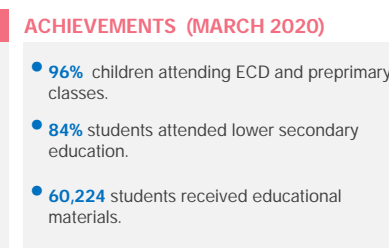
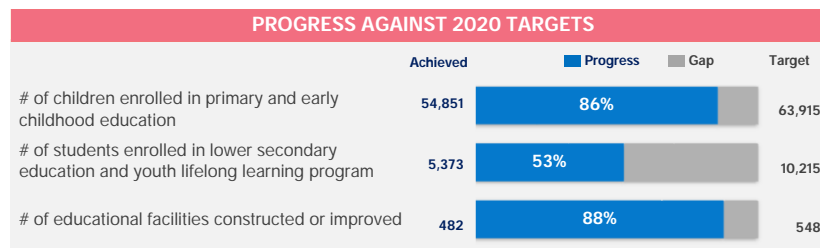
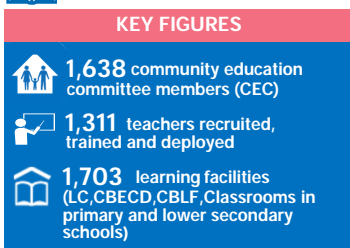
GEOGRAPHIC SITUATION



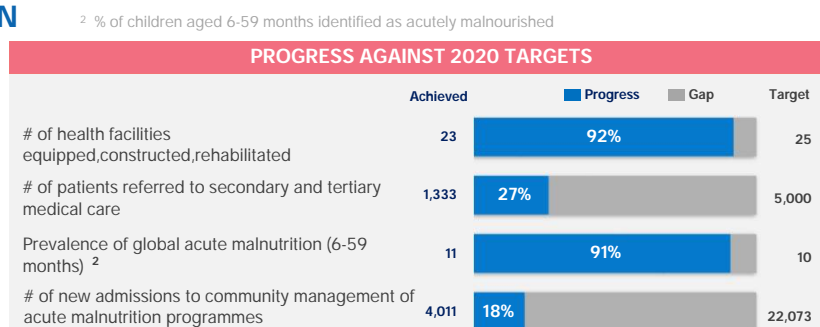
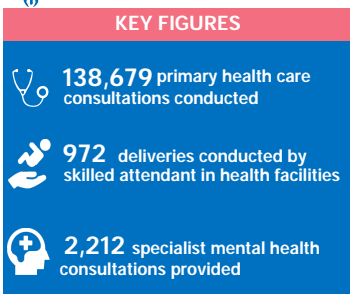
PROTECTION



EDUCATION



HEALTH & NUTRITION

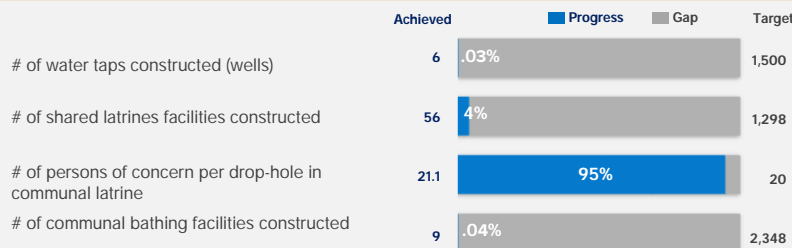


WASH

KEY FIGURES

- 39,583** WASH facilities assessed during a sweep survey in 2019
- 574** Hygiene volunteers
- 52** WASH hygiene kits distributed
- 5,923** tube well and latrine maintenance conducted (repair, renovate, decommission and desludge)

PROGRESS AGAINST 2020 TARGETS



ACHIEVEMENTS (MARCH 2020)

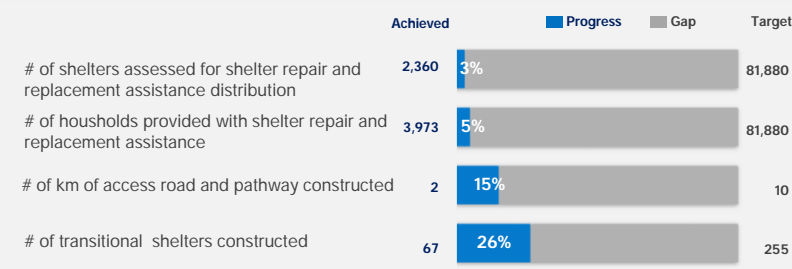
- 24** WASH facilities constructed, including **18** latrines and **6** taps.
- 1,676** WASH facilities have been maintained, including **863** tube wells and **813** latrines.
- 666** waste bins and waste pits installed.

SHELTER

KEY FIGURES

- 28** km of roads and pathways³
- 79** km of drainage
- 63** km of retaining structures
- 33** km of steps and
- 4.8** km of bridges constructed
- 3,973** shelter repair and replacement kits distributed

PROGRESS AGAINST 2020 TARGETS



ACHIEVEMENTS (MARCH 2020)

- 4.6** km of infrastructures constructed, including **1** km of roads and pathways, **0.3** km of bridges and **3** km of retaining structures.
- 45** partial shelter repair and replacement kits distributed.

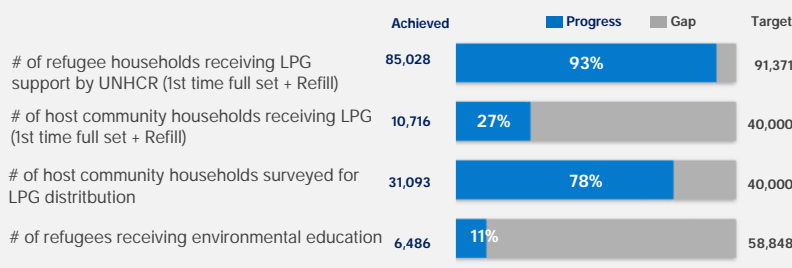
⁴ Comprehensive target which include targets from all UNHCR partners involved in shelter repair and replacement assistance distribution.

ENVIRONMENT & ENERGY

KEY FIGURES

- 31,093** host community households have been assessed during LPG distribution assessment
- 5** conflicts with elephants successfully mitigated by trained ERT* members

PROGRESS AGAINST 2020 TARGETS



ACHIEVEMENTS (MARCH 2020)

- 211** refugee households received 1st time LPG cylinder while LPG refills were distributed to **81,774** refugee households.
- 8,122** host community households have received LPG refill.
- 15,062** host community households have been surveyed for LPG distribution.
- 5,662** refugees received environmental education.

NFI & SITE MANAGEMENT

KEY FIGURES

- 39,495** Emergency shelter and WASH kit (PDK) pre-positioned
- 16** camps managed by site management support agency partners
- 95,763** female/menstrual hygiene kits distributed

PROGRESS AGAINST 2020 TARGETS



ACHIEVEMENTS (MARCH 2020)

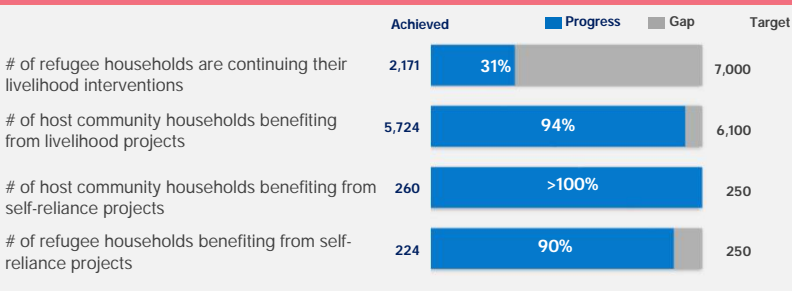
- 113** refugee households received core relief items.
- 58,780** female menstrual hygiene kits distributed to women age 12 to 59 year old.
- 72,484** households received double portion of bathing and laundry soap.

SOCIAL COHESION

KEY FIGURES

- 2,028** host community households are continuing their livelihood intervention with TUP* projects
- 3,475** host community and **2,171** refugee households are continuing their livelihood interventions
- 500** host community and refugee households enrolled for skill development training for ensuring their self-reliance

PROGRESS AGAINST 2020 TARGETS



ACHIEVEMENTS (MARCH 2020)

- 3,475** host community and **2,171** refugee households have initiated their livelihood interventions while **2,028** are continuing their livelihood interventions with TUP projects.
- 224** host community and **260** refugee members have been enrolled for skill development training for ensuring their self-reliance.

THANK YOU

UNHCR's humanitarian response in Bangladesh is made possible thanks to the generous support of major donors who have contributed unrestricted funding to UNHCR's global operations, and to donors who have generously contributed directly to UNHCR Bangladesh operations.

In 2020, continued generous support has been received from the governments of: **Australia, Canada, Denmark, the European Union, Germany, Ireland, Italy, Japan, the Republic of Korea, the Netherlands, Norway, Sweden, Switzerland, the United Kingdom, and the United States of America.**

UNHCR is sincerely grateful for the additional support received from many individuals, foundations, and companies worldwide including **Bill & Melinda Gates Foundation, CERF, Education Cannot Wait, and Thani Bin Abdullah Bin Thani Al-Thani Humanitarian Fund.**