

## KEY FIGURES

**301,490**  
Total refugee population

**98%**

Living in camps and settlements  
**296,062**

**82%**

Are Women and Children

**66,886**  
Households

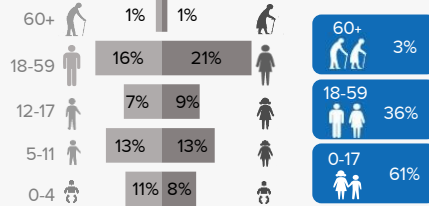
**2%**

Living in urban areas  
**5,428**

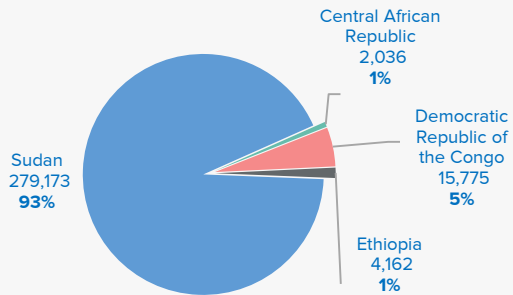
**53%**

Are female

## Age and gender breakdowns

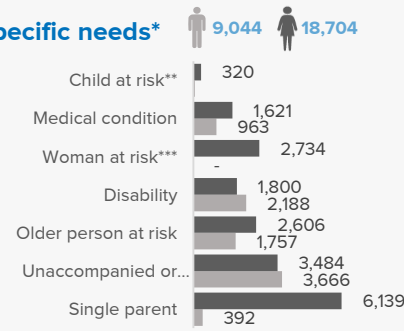


## Main countries of origin\*



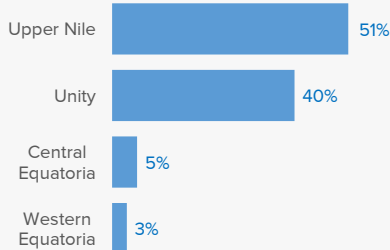
\* Excludes 344 refugees from other countries

## Main Specific needs\*



\*Individual can have more than one specific need  
\*\*Excludes children at risk of not attending school  
\*\*\*Excludes lactating mothers

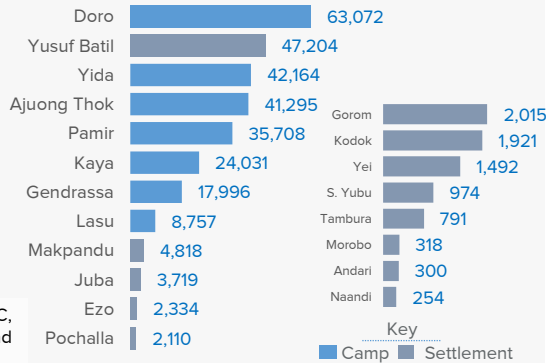
## States hosting refugees



## Our Partners

CRA, AAHI, ACROSS, ACTED, AHA, CARE, DRC, HDC, IMC, IRC, LWF, RI, SCI, SP, UMCOR, JRS and WVI.

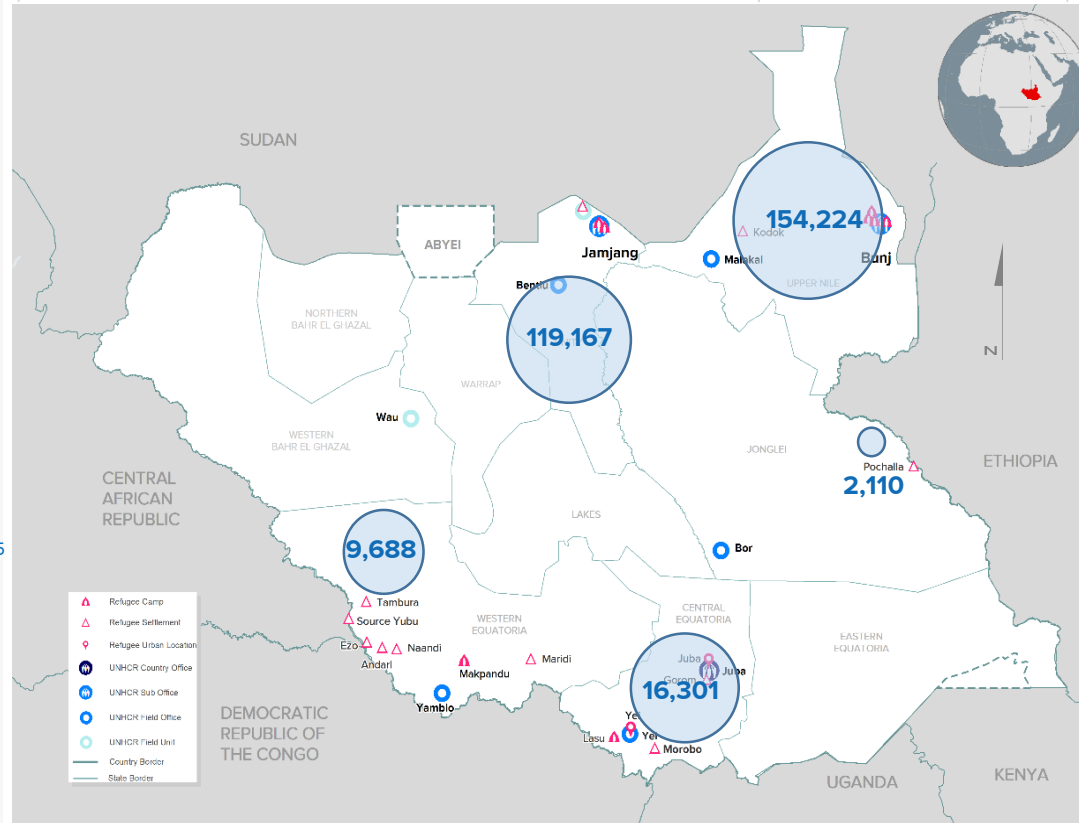
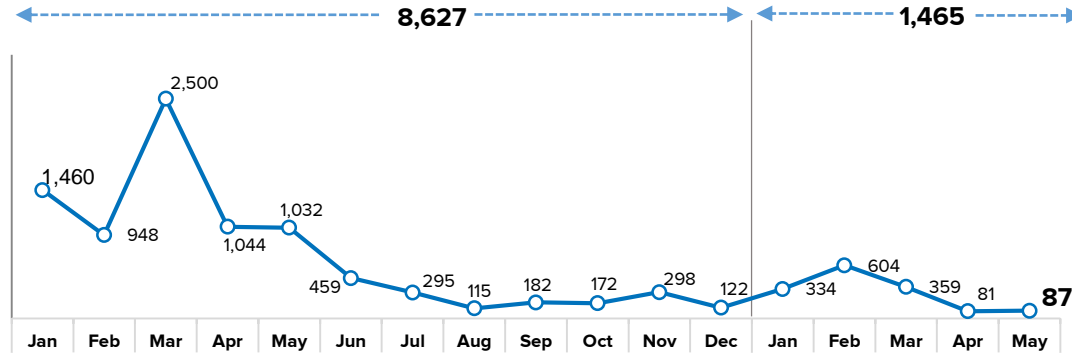
## Refugee locations



Key  
Camp Settlement

## New arrivals trends

Jan 2019 – May 2020



# South Sudan Refugee statistics: Population by Location, Sex and Age Group

as of the 31-May-2020



State	Location	0 - 4 years			5 - 11 years			12 - 17 years			18 - 59 years			60 years +			Total			Households		
		F	M	Total	F	M	Total	F	M	Total	F	M	Total	F	M	Total	F	M	Total	F	M	Total
Upper Nile	Doro	5,874	6,113	11,987	7,867	8,361	16,228	5,263	5,433	10,696	12,881	10,006	22,887	699	575	1,274	32,584	30,488	63,072	7,741	6,034	13,775
	Kaya	1,914	2,105	4,019	2,799	2,947	5,746	2,038	2,009	4,047	5,291	3,787	9,078	491	650	1,141	12,533	11,498	24,031	2,761	2,474	5,235
	Yusuf Batil	3,921	4,100	8,021	5,616	5,870	11,486	3,987	3,998	7,985	9,807	7,833	17,640	947	1,125	2,072	24,278	22,926	47,204	4,788	4,606	9,394
	Gendrassa	1,324	1,348	2,672	2,140	2,303	4,443	1,627	1,536	3,163	3,965	2,993	6,958	346	414	760	9,402	8,594	17,996	2,148	1,824	3,972
	Kodok	0	0	0	274	286	560	226	182	408	475	401	876	40	37	77	1,015	906	1,921	327	213	540
	<b>Total</b>	<b>13,033</b>	<b>13,666</b>	<b>26,699</b>	<b>18,696</b>	<b>19,767</b>	<b>38,463</b>	<b>13,141</b>	<b>13,158</b>	<b>26,299</b>	<b>32,419</b>	<b>25,020</b>	<b>57,439</b>	<b>2,523</b>	<b>2,801</b>	<b>5,324</b>	<b>79,812</b>	<b>74,412</b>	<b>154,224</b>	<b>17,765</b>	<b>15,151</b>	<b>32,916</b>
Unity State	Ajounj Thok	3,489	3,520	7,009	5,153	5,237	10,390	4,003	4,286	8,289	8,195	6,801	14,996	367	244	611	21,207	20,088	41,295	4,995	3,005	8,000
	Pamir	3,596	3,639	7,235	4,754	4,868	9,622	3,365	3,110	6,475	7,257	4,595	11,852	325	199	524	19,297	16,411	35,708	5,541	2,105	7,646
	Yida	3,308	3,417	6,725	6,222	6,380	12,602	4,468	4,099	8,567	9,800	3,780	13,580	429	261	690	24,227	17,937	42,164	6,417	1,846	8,263
	<b>Total</b>	<b>10,393</b>	<b>10,576</b>	<b>20,969</b>	<b>16,129</b>	<b>16,485</b>	<b>32,614</b>	<b>11,836</b>	<b>11,495</b>	<b>23,331</b>	<b>25,252</b>	<b>15,176</b>	<b>40,428</b>	<b>1,121</b>	<b>704</b>	<b>1,825</b>	<b>64,731</b>	<b>54,436</b>	<b>119,167</b>	<b>16,953</b>	<b>6,956</b>	<b>23,909</b>
Central Equatoria	Gorom	174	181	355	209	231	440	164	183	347	439	396	835	27	11	38	1,013	1,002	2,015	324	310	634
	Juba	116	97	213	208	190	398	136	131	267	450	2,270	2,720	7	114	121	917	2,802	3,719	243	2,289	2,532
	Lasu	204	220	424	1,207	1,202	2,409	811	798	1,609	2,111	1,815	3,926	249	140	389	4,582	4,175	8,757	1,259	1,201	2,460
	Morobo	6	12	18	53	44	97	26	43	69	71	53	124	4	6	10	160	158	318	38	41	79
	Yei	84	99	183	167	204	371	137	143	280	267	357	624	15	19	34	670	822	1,492	222	305	527
	<b>Total</b>	<b>584</b>	<b>609</b>	<b>1,193</b>	<b>1,844</b>	<b>1,871</b>	<b>3,715</b>	<b>1,274</b>	<b>1,298</b>	<b>2,572</b>	<b>3,338</b>	<b>4,891</b>	<b>8,229</b>	<b>302</b>	<b>290</b>	<b>592</b>	<b>7,342</b>	<b>8,959</b>	<b>16,301</b>	<b>2,086</b>	<b>4,146</b>	<b>6,232</b>
Jonglei State	Pochalla	214	218	432	204	243	447	191	234	425	573	168	741	52	13	65	1,234	876	2,110	435	87	522
	<b>Total</b>	<b>214</b>	<b>218</b>	<b>432</b>	<b>204</b>	<b>243</b>	<b>447</b>	<b>191</b>	<b>234</b>	<b>425</b>	<b>573</b>	<b>168</b>	<b>741</b>	<b>52</b>	<b>13</b>	<b>65</b>	<b>1,234</b>	<b>876</b>	<b>2,110</b>	<b>435</b>	<b>87</b>	<b>522</b>
Western Equatoria	Andari	3	3	6	47	45	92	18	25	43	86	52	138	8	13	21	162	138	300	60	61	121
	Ezo	9	11	20	248	273	521	151	152	303	791	503	1,294	105	91	196	1,304	1,030	2,334	557	424	981
	Makpandu	425	478	903	559	527	1,086	350	319	669	1,072	975	2,047	45	68	113	2,451	2,367	4,818	661	815	1,476
	Maridi	6	4	10	26	25	51	23	24	47	45	62	107	0	2	2	100	117	217	31	52	83
	Naandi	3	2	5	37	35	72	24	28	52	55	52	107	8	10	18	127	127	254	39	45	84
	Source yubu	4	7	11	137	164	301	91	89	180	287	162	449	16	17	33	535	439	974	196	124	320
	Tambura	6	10	16	139	148	287	85	73	158	200	118	318	8	4	12	438	353	791	147	95	242
	<b>Total</b>	<b>456</b>	<b>515</b>	<b>971</b>	<b>1,193</b>	<b>1,217</b>	<b>2,410</b>	<b>742</b>	<b>710</b>	<b>1,452</b>	<b>2,536</b>	<b>1,924</b>	<b>4,460</b>	<b>190</b>	<b>205</b>	<b>395</b>	<b>5,117</b>	<b>4,571</b>	<b>9,688</b>	<b>1,691</b>	<b>1,616</b>	<b>3,307</b>
<b>Grand total</b>		<b>24,680</b>	<b>25,584</b>	<b>50,264</b>	<b>38,066</b>	<b>39,583</b>	<b>77,649</b>	<b>27,184</b>	<b>26,895</b>	<b>54,079</b>	<b>64,118</b>	<b>47,179</b>	<b>111,297</b>	<b>4,188</b>	<b>4,013</b>	<b>8,201</b>	<b>158,236</b>	<b>143,254</b>	<b>301,490</b>	<b>38,930</b>	<b>27,956</b>	<b>66,886</b>



# Asylum Seekers Population by Country of Origin, Sex and Age Group in South Sudan

as of the 31-May-2020



Country of Origin	Location	Principal Applicants			Persons																	
		Total Cases	Female headed		0 - 4 years			5 - 11 years			12 - 17 years			18 - 59 years			60 years +			Total		
			Cases	%	F	M	T	F	M	T	F	M	T	F	M	T	F	M	T	F	M	T
BURUNDI	Juba	742	21	3%	18	13	31	10	9	19	3	4	7	74	723	797	0	0	0	105	749	854
	Total	742	21	3%	18	13	31	10	9	19	3	4	7	74	723	797	-	-	-	105	749	854
CHAD	Juba	1	-	0%	-	-	-	-	-	-	-	-	-	-	1	1	-	-	-	-	1	1
	Total	1	-	3%	-	-	-	-	-	-	-	-	-	-	1	1	-	-	-	-	1	1
CAMEROON	Juba	2	-	0%	-	-	-	-	-	-	-	-	-	-	2	2	-	-	-	-	2	2
	Makpandu	2	-	0%	-	-	-	-	-	-	-	-	-	-	2	2	-	-	-	-	2	2
	Total	4	-	0%	-	-	-	-	-	-	-	-	-	-	4	4	-	-	-	-	4	4
ERITREA	Juba	1,939	376	18%	99	150	249	45	45	90	1	8	9	539	1,544	2,083	6	57	63	690	1,804	2,494
	Makpandu	3	-	0%	-	-	-	-	-	-	-	-	-	-	3	3	-	-	-	-	3	3
	Total	1,942	376	19%	99	150	249	45	45	90	1	8	9	539	1,547	2,086	6	57	63	690	1,807	2,497
ETHIOPIA	Doro	1	-	0%	-	-	-	-	-	-	-	-	-	-	1	1	-	-	-	-	1	1
	Juba	272	61	18%	8	19	27	11	6	17	1	-	1	114	210	324	-	2	2	134	237	371
	Makpandu	2	-	0%	-	-	-	-	-	-	-	-	-	-	2	2	-	-	-	-	2	2
	Total	275	61	22%	8	19	27	11	6	17	1	-	1	114	213	327	-	2	2	134	240	374
SOMALIA	Juba	30	1	3%	-	-	-	-	-	-	-	-	-	1	29	30	-	-	-	1	29	30
	Total	30	1	3%	-	-	-	-	-	-	-	-	-	1	29	30	-	-	-	1	29	30
SUDAN	Juba	7	-	0%	-	1	1	-	-	-	-	-	-	2	5	7	-	2	2	2	8	10
	Pamir	-	-	0%	-	-	-	-	-	-	-	-	-	-	4	4	-	-	-	-	4	4
	Total	7	-	0%	-	1	1	-	-	-	-	-	-	2	9	11	-	2	2	2	12	14
SYRIA	Juba	1	-	0%	-	-	-	-	-	-	-	-	-	-	1	1	-	-	-	-	1	1
	Makpandu	1	-	0%	-	-	-	-	-	-	-	-	-	-	1	1	-	-	-	1	-	1
	Total	2	-	0%	-	-	-	-	-	-	-	-	-	-	2	2	-	-	-	1	1	2
Egypt	Juba	1	-	0%	-	-	-	-	-	-	-	-	-	-	1	1	-	-	-	-	1	1
	Juba	1	-	0%	-	-	-	-	-	-	-	-	-	-	1	1	-	-	-	-	1	1
UGANDA	Juba	1	-	0%	-	-	-	-	-	-	-	-	-	-	1	1	-	-	-	-	1	1
	Juba	4	-	0%	2	-	2	-	-	-	-	-	-	1	4	5	-	-	-	3	4	7
DRC	Juba	2	-	0%	-	-	-	-	-	-	-	-	-	-	2	2	-	-	-	-	2	2
	Total	8	-	0%	2	-	2	-	-	-	-	-	-	1	8	9	-	-	-	3	8	11
Grand Total		3,011	459	1	127	183	310	66	60	126	5	12	17	731	2,536	3,267	6	61	67	936	2,851	3,787