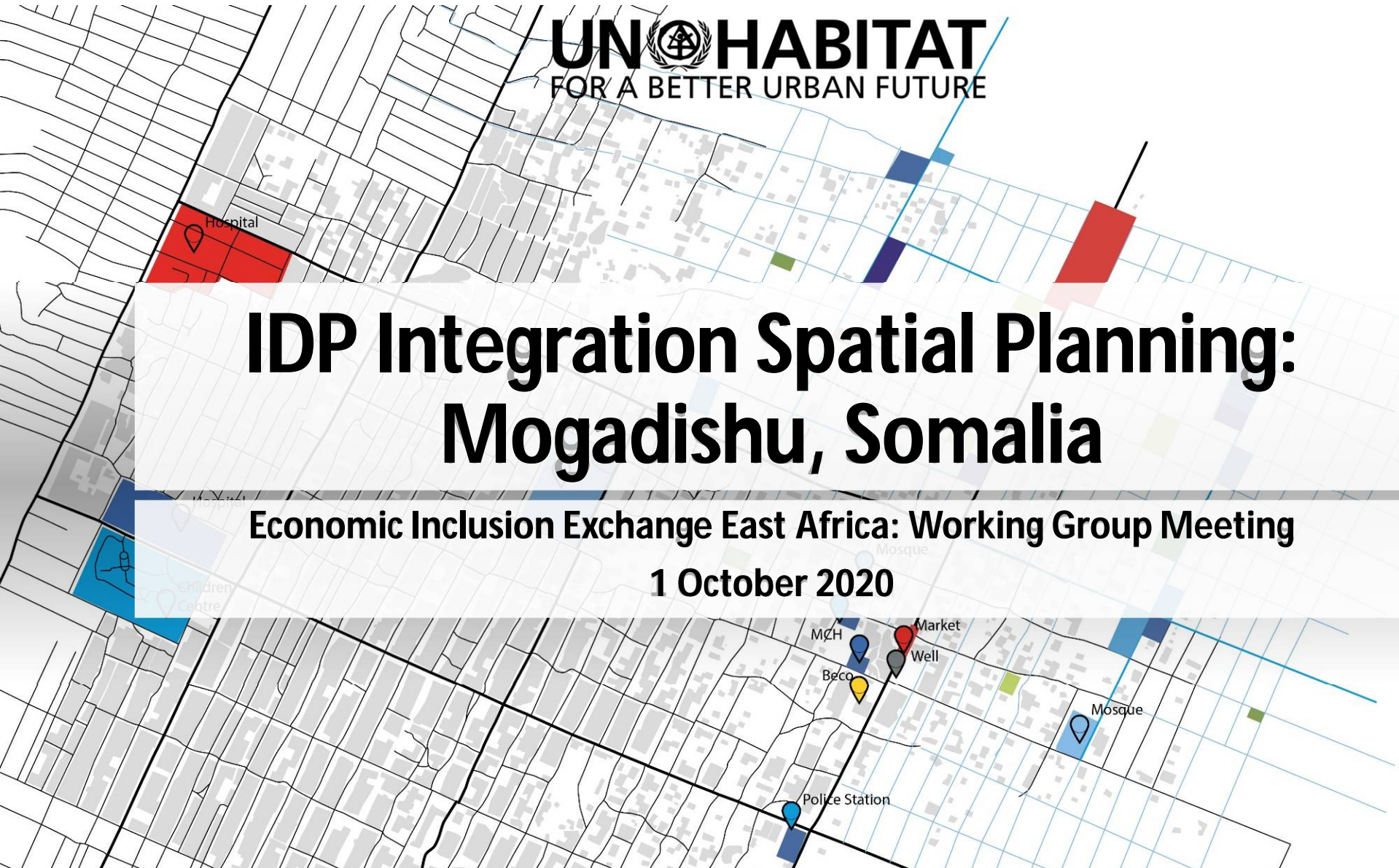
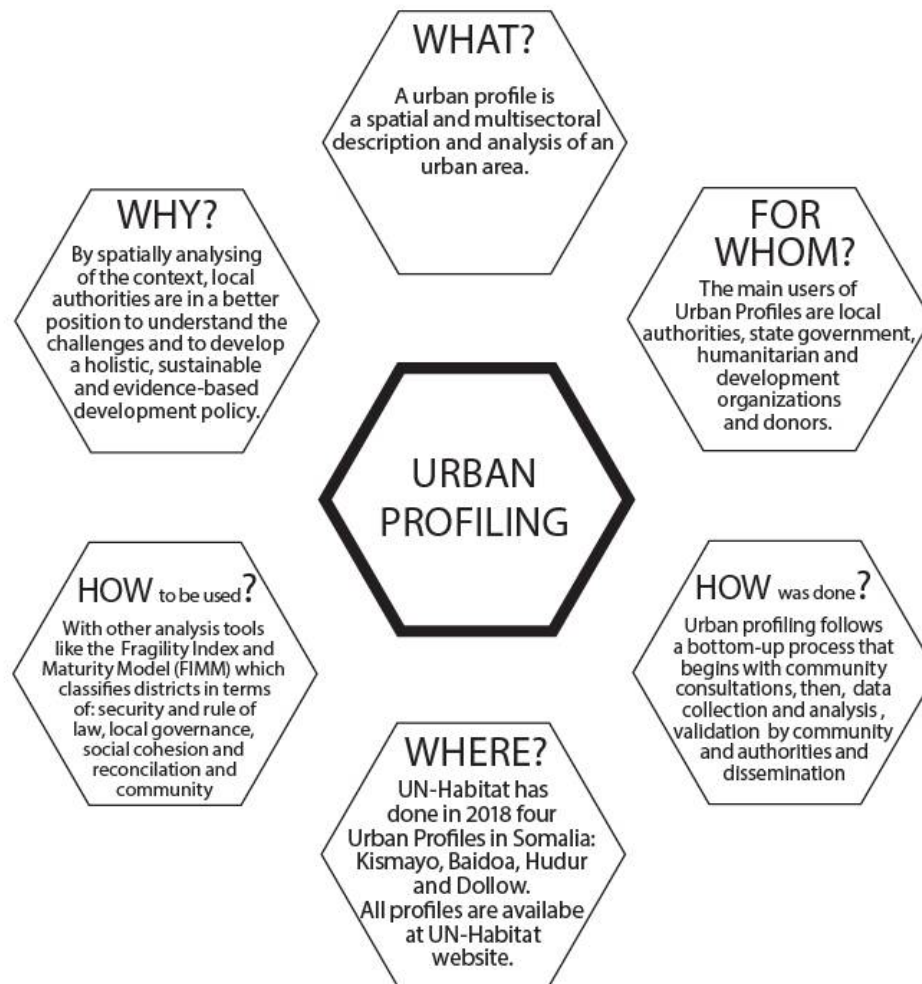


# IDP Integration Spatial Planning: Mogadishu, Somalia

**Economic Inclusion Exchange East Africa: Working Group Meeting**  
**1 October 2020**

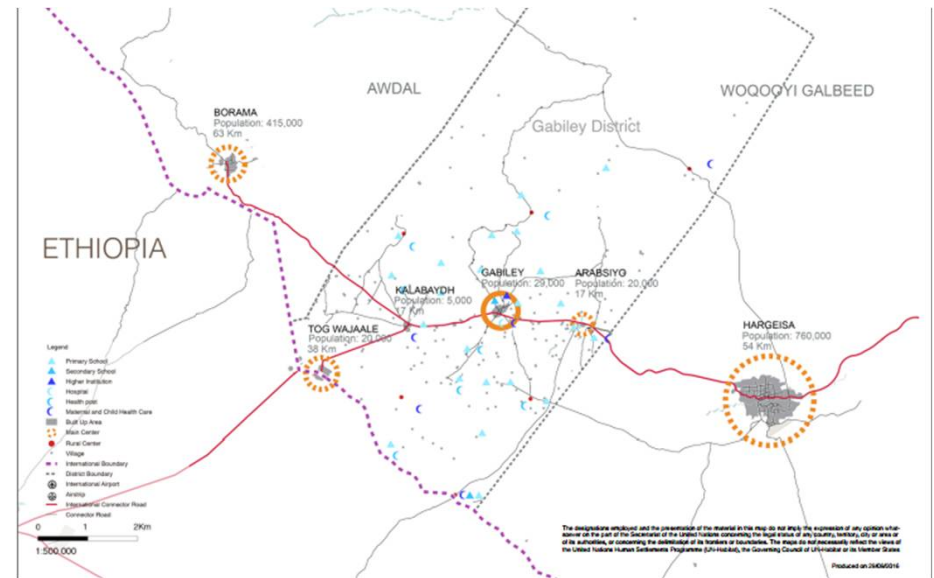
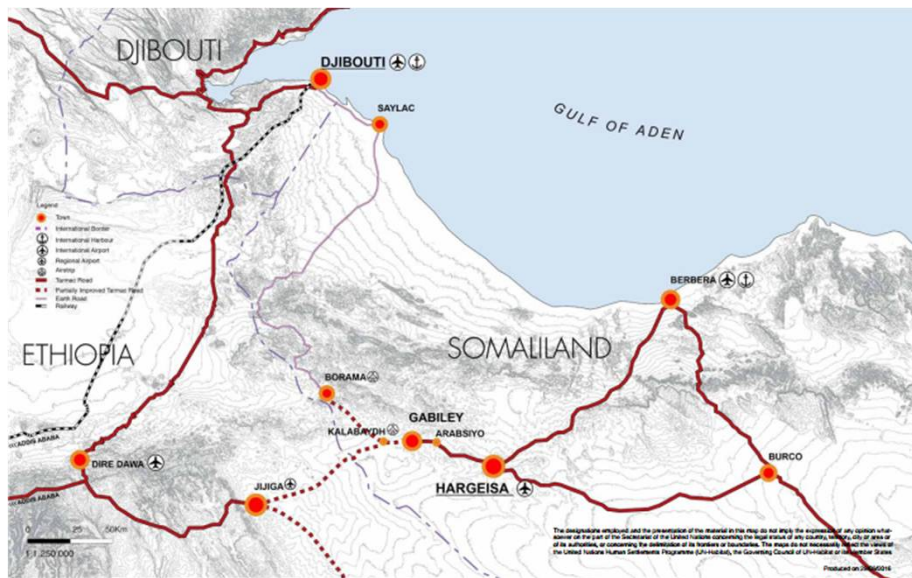


# Economic Inclusion: Urban Profiling



# Economic Inclusion: Location and Regional Context

- Is there good connectivity for people and goods between the city and regional and international destinations?
- To what extent does the city have strong, integrated economic relationships with other cities and regions? Is the city a key node, or is it close to a key node, in global or regional transportation networks (ports, rail, air)?



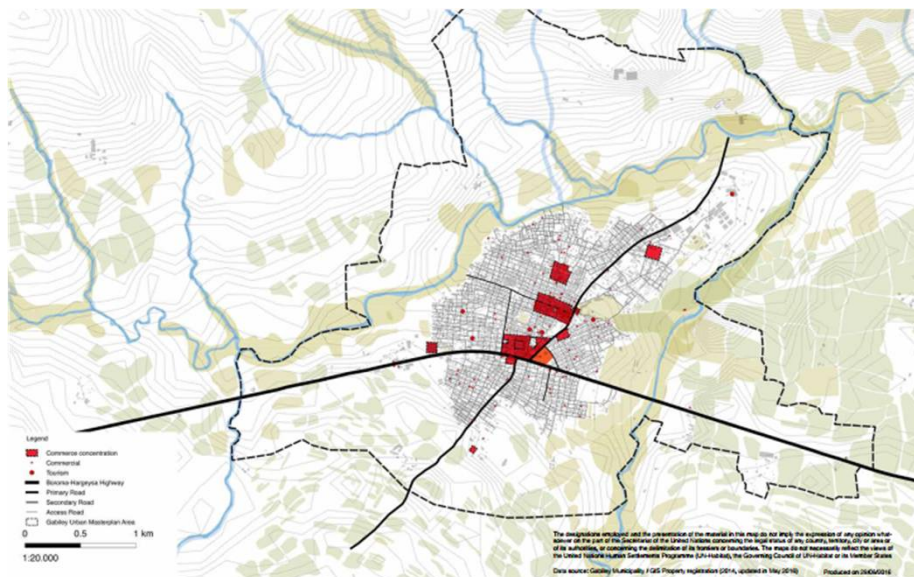


# Urban Profiling: Livelihood and Productive Sectors:

Factors that influence the local economy & main activities in which the community rely on:

- Livestock rearing and farming
- Agriculture
- Small, medium or big scale businesses
- Remittances from diaspora
- Tax revenue from airport or port activities

- Financial contributions / ODA
- Trade routes
- Imports / exports
- Markets (wholesale and retail)
- Hospitality sector (hotels and restaurants)
- Industry
- *Role of youth in employment and livelihoods*



Auto rick in Baidoa city centre (Baidoa Urban Profile)



Workers in the port of Kismayo. (Kismayo Urban Profile)

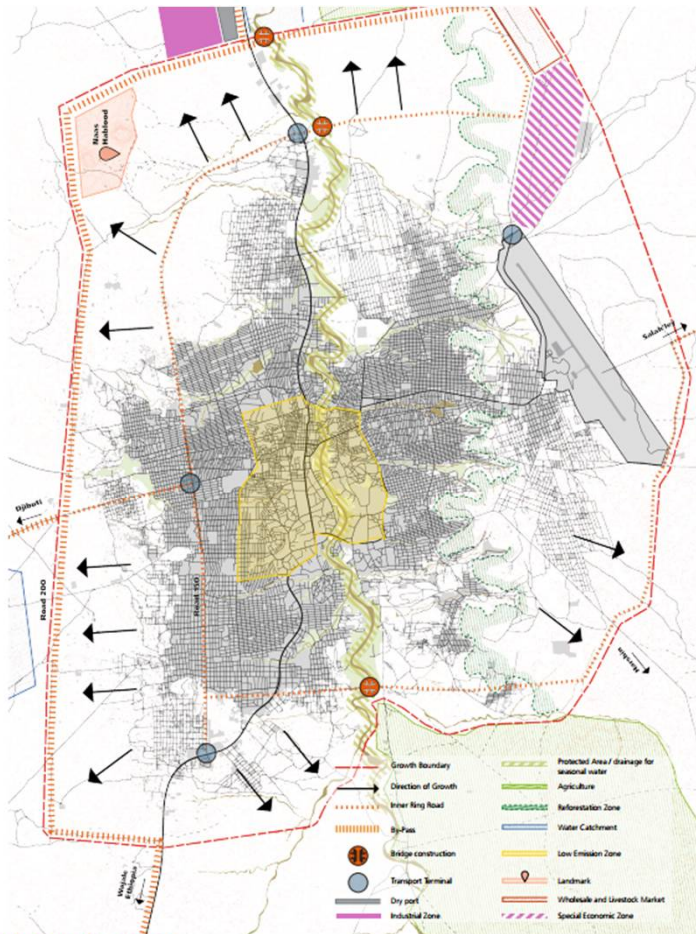


Meat market area in Suuq Weyne (Hudur Urban Profile)



Charcoal briquette production (Baidoa Urban Profile)

# City Profiling: Outputs



- Introduction
- General city information
  - Location and regional context
  - Governance and administration
  - History
- Urban growth and demographics
  - People and demographic trends
  - Urban growth
- Land use patterns and environmental constraints
- Urban and Rural economy
  - Development potentials
  - Livelihood and productive sectors
- Basic urban services
  - Security
  - Water and sanitation
  - Transport and transport management
  - Power and telecommunications
  - Education
  - Health
  - Social and religious services
- Housing, land and properties
- Dimension of displacement, humanitarian needs & services gaps
  - Latest data
  - Immediate needs and basic services

- Community and city consultations
- Community Action Planning (CAP)
- Capacity assessment
- Development scenarios

**ACTION!**





# Case Study: Mogadishu IDP Integration Planning

- Mogadishu is the 5th largest city in the East African region.
- IDPs: 850,000 (in 2019)
- An estimated one-third of all IDPs in Mogadishu, have lived in long-term protracted displacement relying on humanitarian assistance.



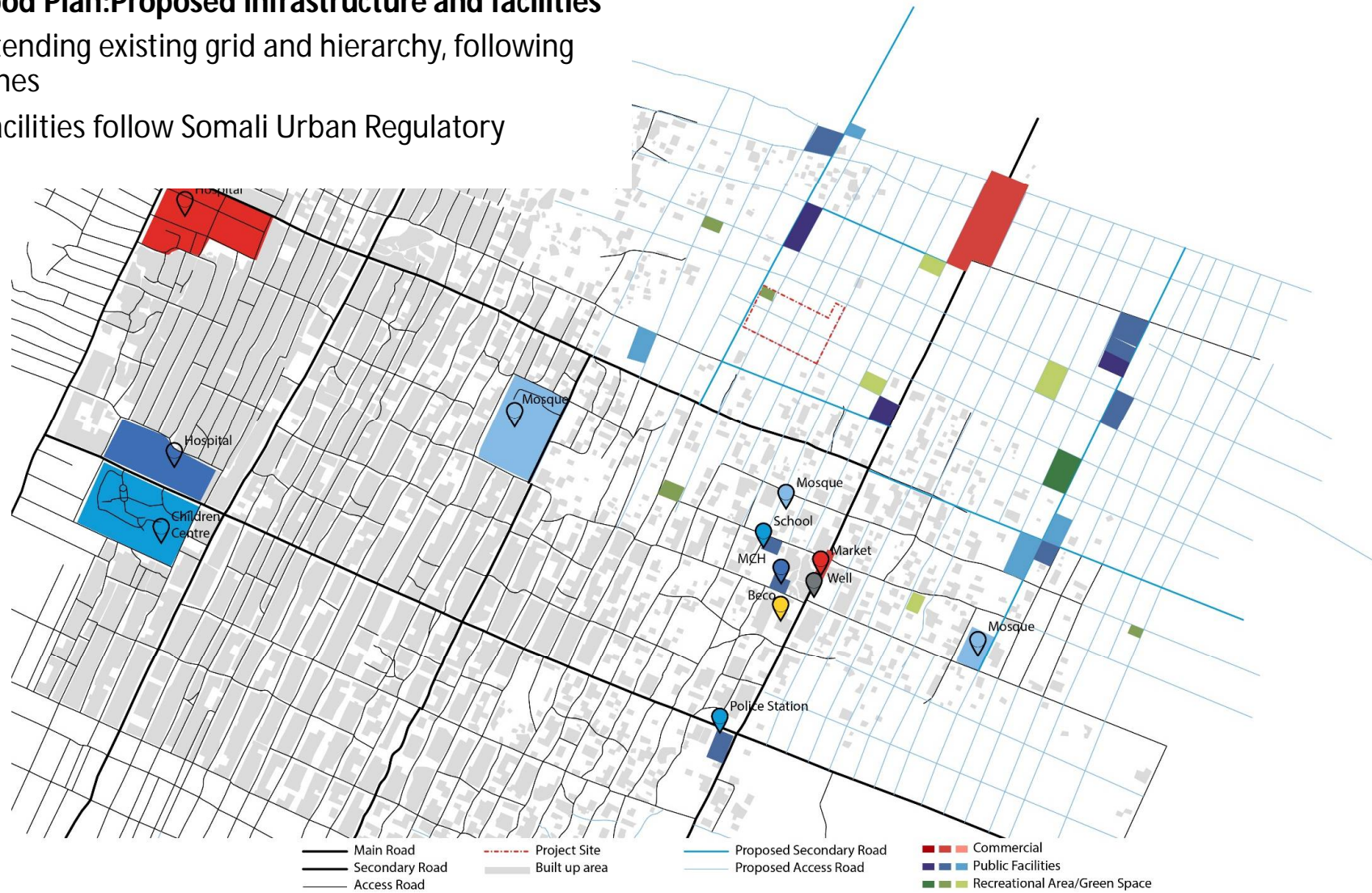
## Heliwa: Existing infrastructure and facilities

Analysis undergoing but lack of neighbourhood scale social facilities



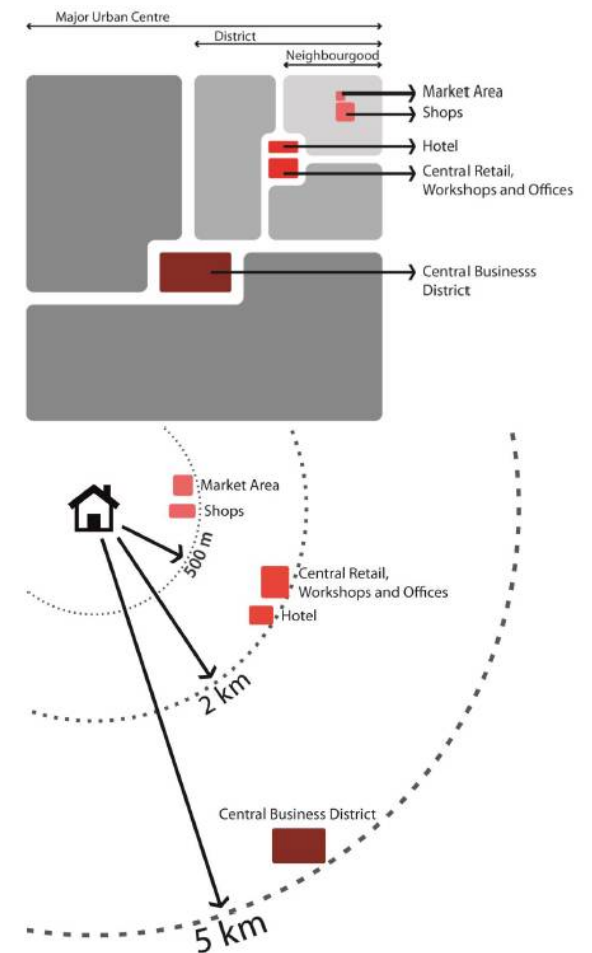
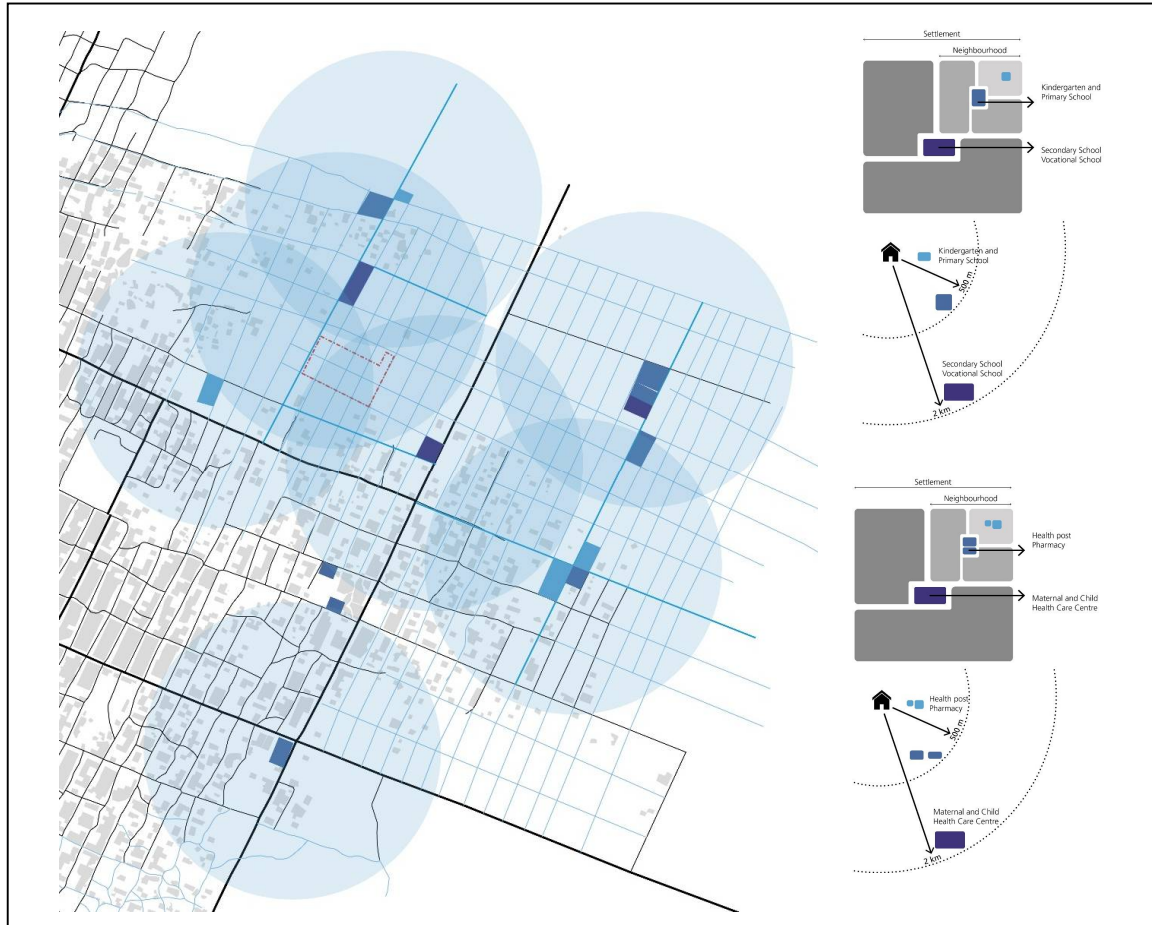
## Heliwa Neighbourhood Plan: Proposed infrastructure and facilities

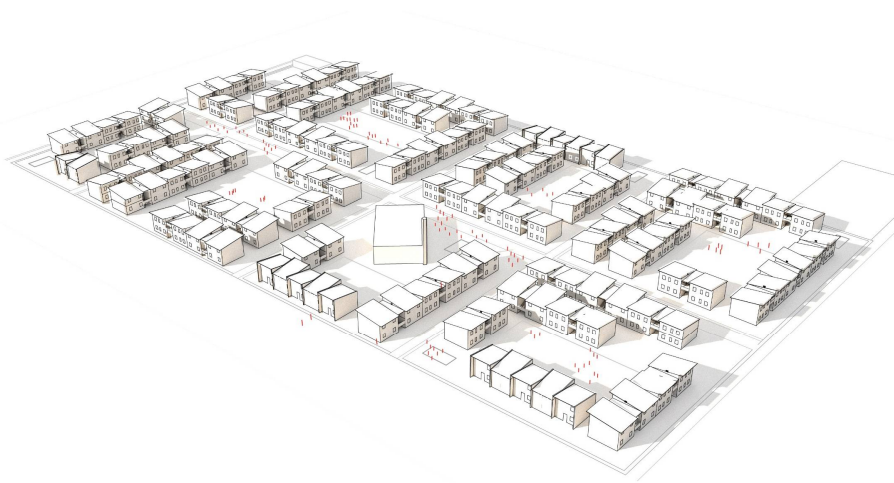
- Road Network extending existing grid and hierarchy, following visible property lines
- Social & Market Facilities follow Somali Urban Regulatory Framework (URF)





## Catchment Area of Neighbourhood level Education and Health facilities as per URF (500m-10 minutes walk)





## Heliwa Housing Scheme: Local Integration

- Affordability
- Mixed-use
- Socially mixed
- Solutions focused



## Implementation Plan

Priority projects should be added following community and local authority consultations



# National Urban Policy:

