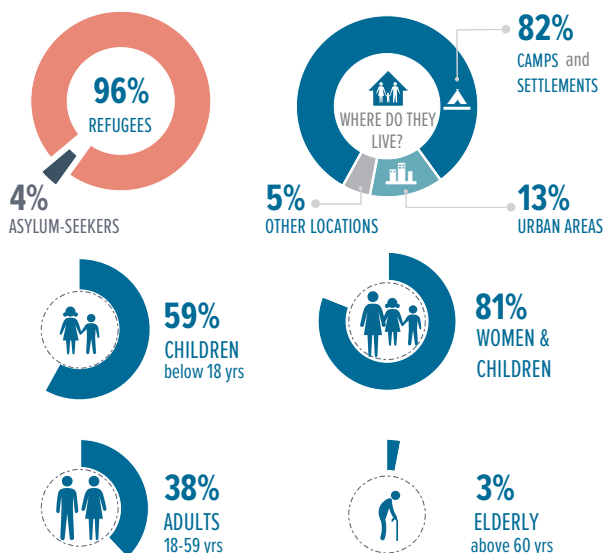


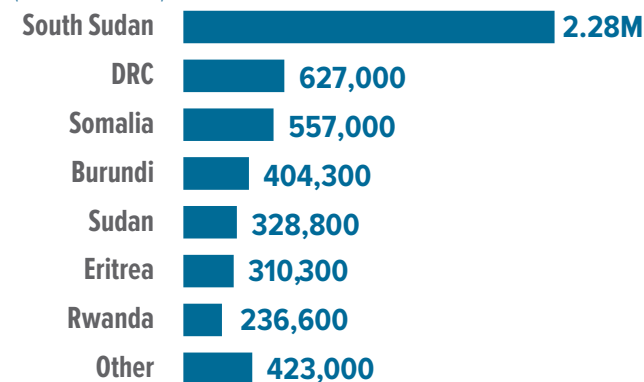
5.17 MILLION
REFUGEES AND ASYLUM-SEEKERS

KEY STATISTICS

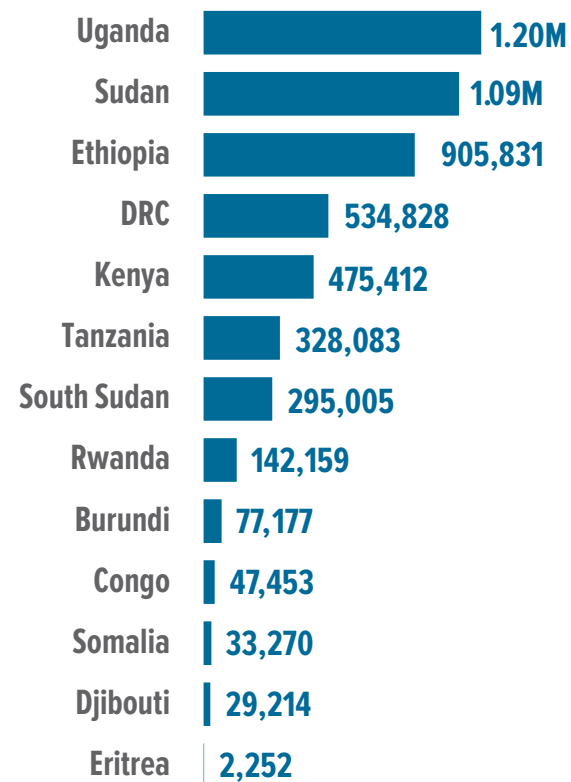


TOTALS BY COUNTRY OF ORIGIN

(to the nearest 100)

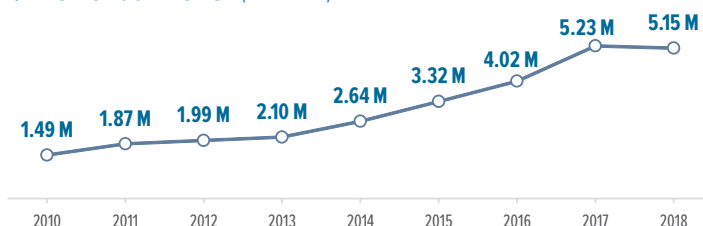


TOTALS BY HOST COUNTRY

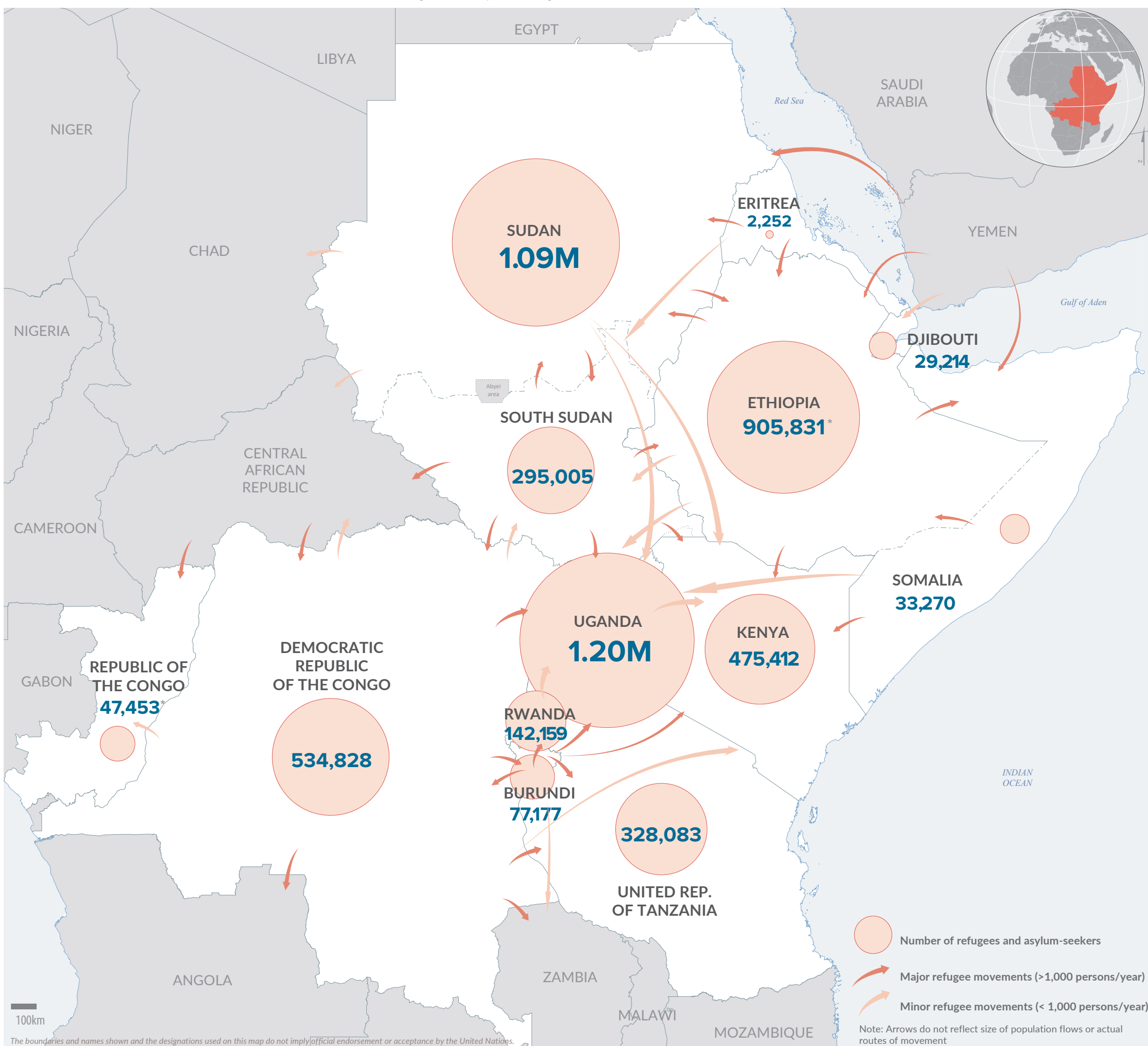


ANNUAL TREND OF DISPLACEMENT

| 2010 to 2018 (in millions)



* The decrease in population is attributed to the completion of a countrywide biometric verification exercise in Uganda; as well as spontaneous refugee returns to Burundi and South Sudan.



The boundaries and names shown and the designations used on this map do not imply official endorsement or acceptance by the United Nations.

Final boundaries between the Republic of Sudan and the Republic of South Sudan and Somalia and Ethiopia has not yet been determined. Final status of the Abyei area is not yet determined.

Creation date: 31 Jan 2019 Sources: Geographic data: UNCS. Population statistics: UNHCR Monthly Statistical Reports 30 November 2018. *Pending the completion of countrywide population verification exercises in Ethiopia and Congo, statistics shown are as 31 August and 31 October 2018 respectively; Burundi and DRC statistics as of 31 Dec 2018. Statistics should be considered provisional and subject to change. Author: UNHCR Regional Service Centre in Nairobi Feedback: kenrsgis@unhcr.org