

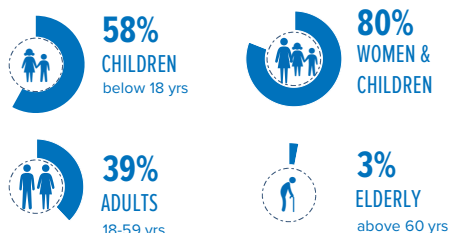
2.5 MILLION
REFUGEES AND ASYLUM-SEEKERS

KEY STATISTICS

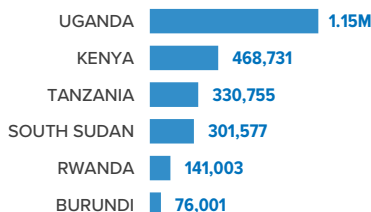


AGE AND SEX COMPOSITION

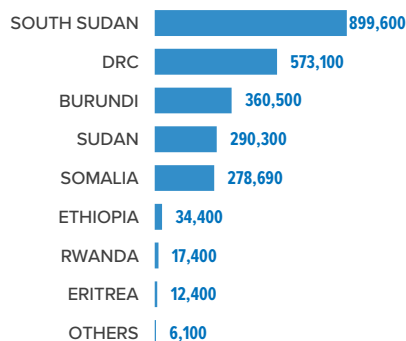
The proportion of children under the age of 18 among refugees and asylum-seekers in the East African region is 58%, compared to the global refugee average of 51%. Uganda and South Sudan host refugee populations with more than 60% children.



HOST COUNTRIES OF REFUGEES & ASYLUM-SEEKERS



SOURCE COUNTRIES OF REFUGEES & ASYLUM-SEEKERS



Numbers rounded off to the nearest 10

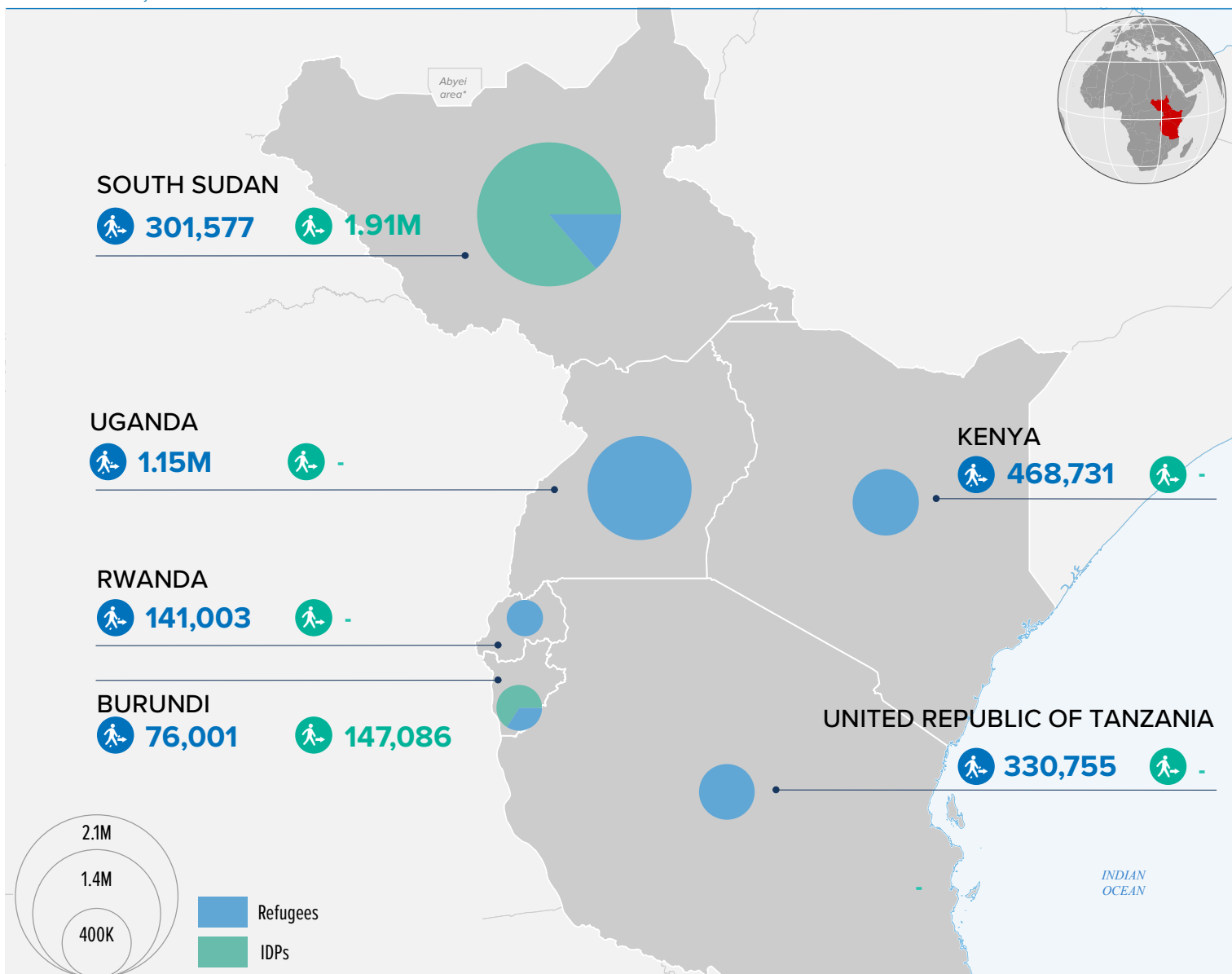
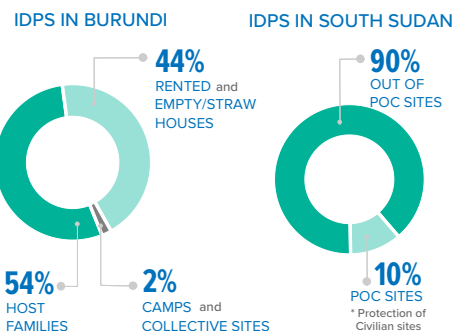
2.1 MILLION
INTERNALLY DISPLACED PERSONS

INTERNALLY DISPLACED PERSONS



Source of the data for IDP figures: South Sudan - OCHA, October 2018; Burundi - IOM DTM October 2018. 24 per cent of IDPs in Burundi (35,864) are linked to the socio-political situation, 75 per cent (110,460) are linked to natural disasters; and 1 per cent to other reasons for displacement.

IDP ACCOMMODATION TYPES



The boundaries and names shown and the designations used on this map do not imply official endorsement or acceptance by the United Nations. Final boundaries between the Republic of Sudan and the Republic of South Sudan and Somalia and Ethiopia has not yet been determined. Final status of the Abyei area is not yet determined.

Printing date: 13 Dec 2018 Sources: Boundaries - UNCS. Refugee statistics - UNHCR Monthly Statistical Reports 31 October 2018, IDP statistics - OCHA, IOM. Statistics should be considered provisional and subject to change. Author: UNHCR Regional Service Centre Nairobi Feedback: kenrsgis@unhcr.org