



Libyan Arab Jamahiriya and neighbouring countries

Population movements since 20th February 2011

As of 06 September 2011

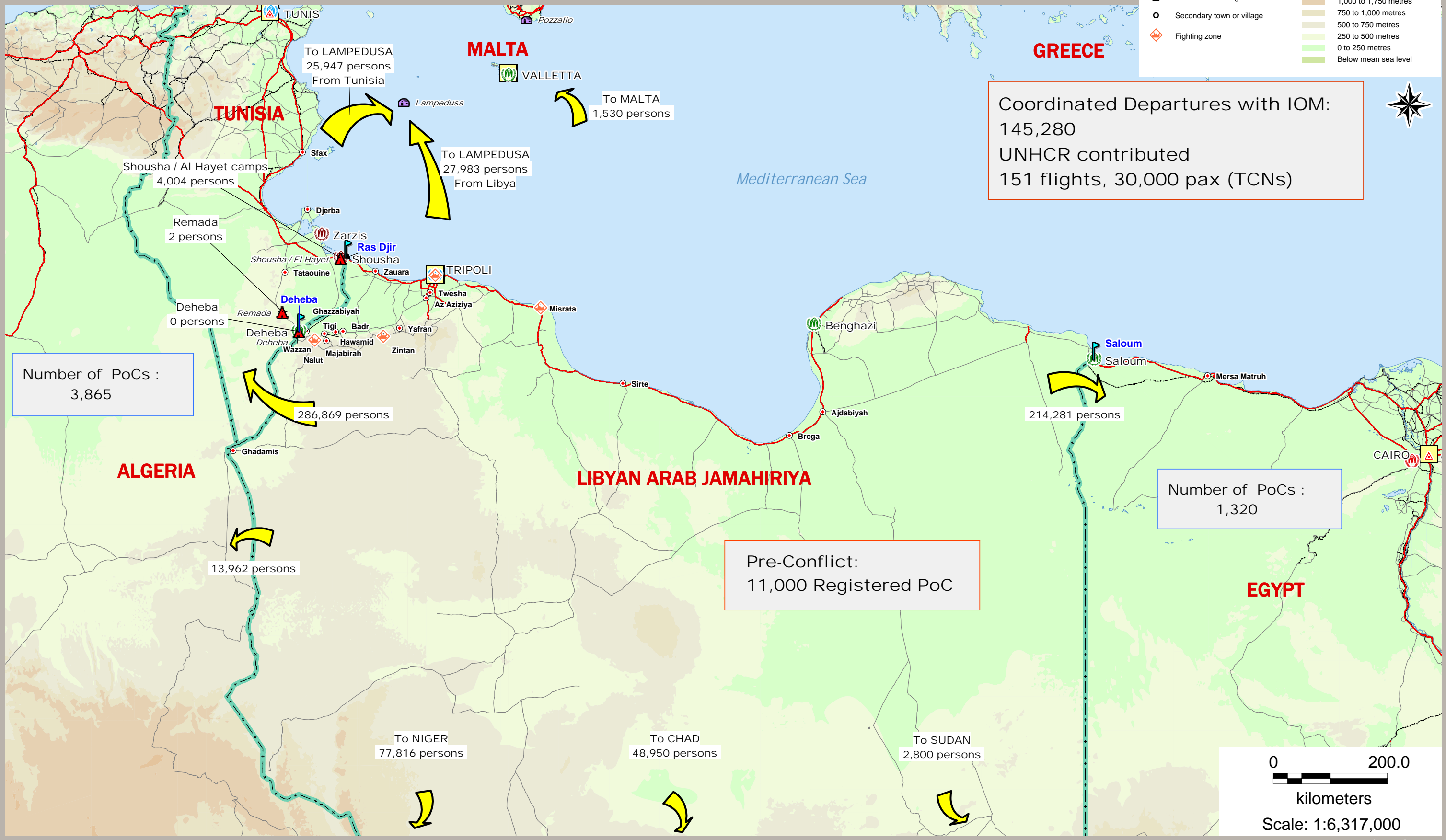
FICSS
Field Information and
Coordination Support Section

Sources:
UNHCR, Global Insight digital mapping
© 1998 Europa Technologies Ltd.
Population figures:
National Borders Authorities
IOM / UNHCR / OCHA

The boundaries and names shown
and the designations used on this
map do not imply official endorsement
or acceptance by the United Nations.



- Capital
- UNHCR Regional Office
- UNHCR Country Office / National Office / Liaison Office
- UNHCR Field Unit
- UNHCR Field Office
- Refugee camp
- Asylum-seeker centre
- Urban refugee location
- Main town or village
- Secondary town or village
- Fighting zone
- Crossing point
- International boundary
- Main road
- Secondary road
- Railway
- Elevation (Above mean sea level)
 - 3,250 to 4,000 metres
 - 2,500 to 3,250 metres
 - 1,750 to 2,500 metres
 - 1,000 to 1,750 metres
 - 750 to 1,000 metres
 - 500 to 750 metres
 - 250 to 500 metres
 - 0 to 250 metres
 - Below mean sea level



Coordinated Departures with IOM:
145,280
UNHCR contributed
151 flights, 30,000 pax (TCNs)