

Flooding in Benin

Displaced Population Sites

As of February 2011



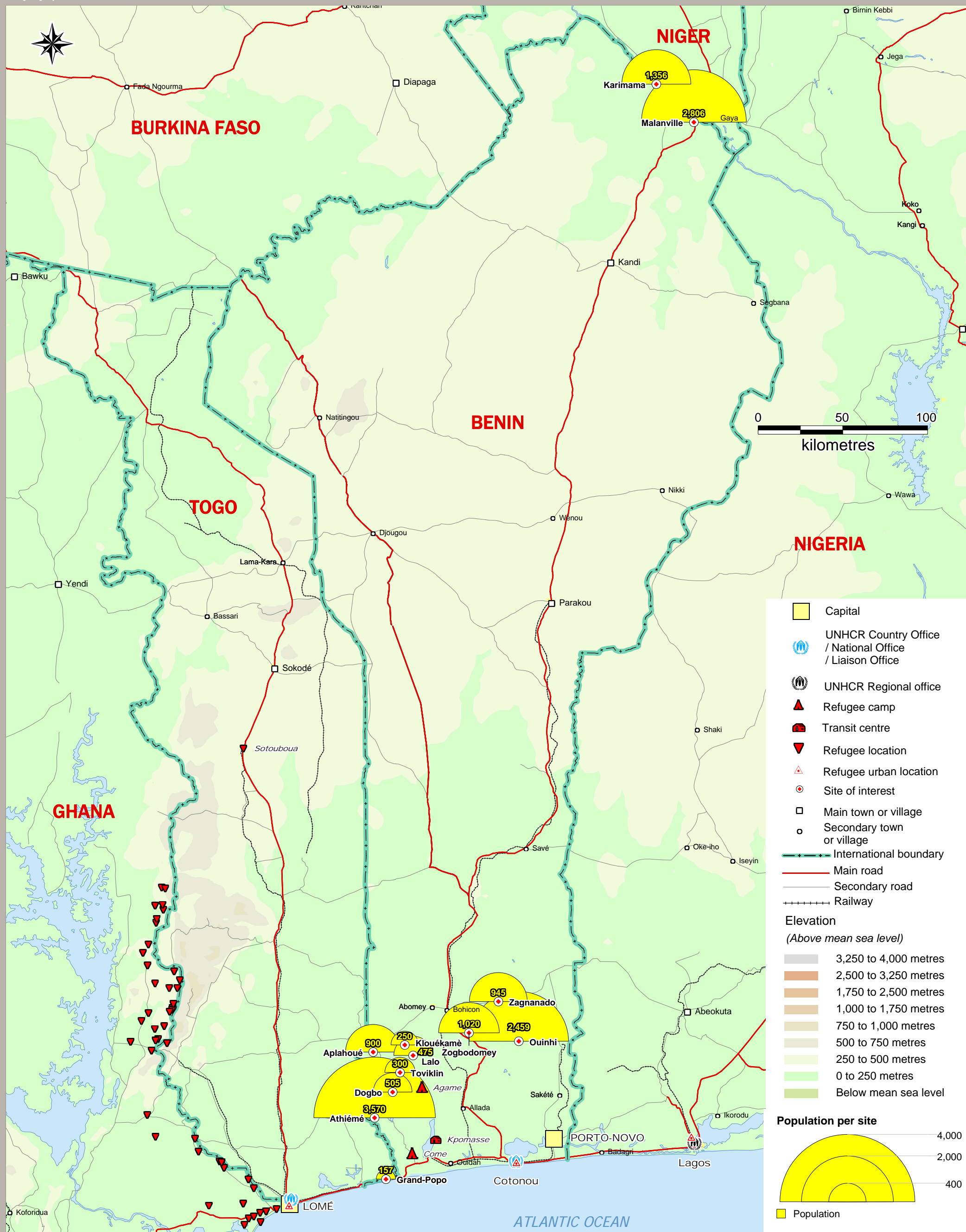
FIGSS
Field Information and
Coordination Support Section

Sources:
UNHCR, Global Insight digital mapping
© 1998 Europa Technologies Ltd.
UNJLC - UNSDI-T

The boundaries and names shown
and the designations used on this
map do not imply official endorsement
or acceptance by the United Nations.



Benin_Flooding_ASPC.WOR



- Capital
- UNHCR Country Office / National Office / Liaison Office
- UNHCR Regional office
- Refugee camp
- Transit centre
- Refugee location
- Refugee urban location
- Site of interest
- Main town or village
- Secondary town or village
- International boundary
- Main road
- Secondary road
- Railway

- Elevation**
(Above mean sea level)
- 3,250 to 4,000 metres
 - 2,500 to 3,250 metres
 - 1,750 to 2,500 metres
 - 1,000 to 1,750 metres
 - 750 to 1,000 metres
 - 500 to 750 metres
 - 250 to 500 metres
 - 0 to 250 metres
 - Below mean sea level

