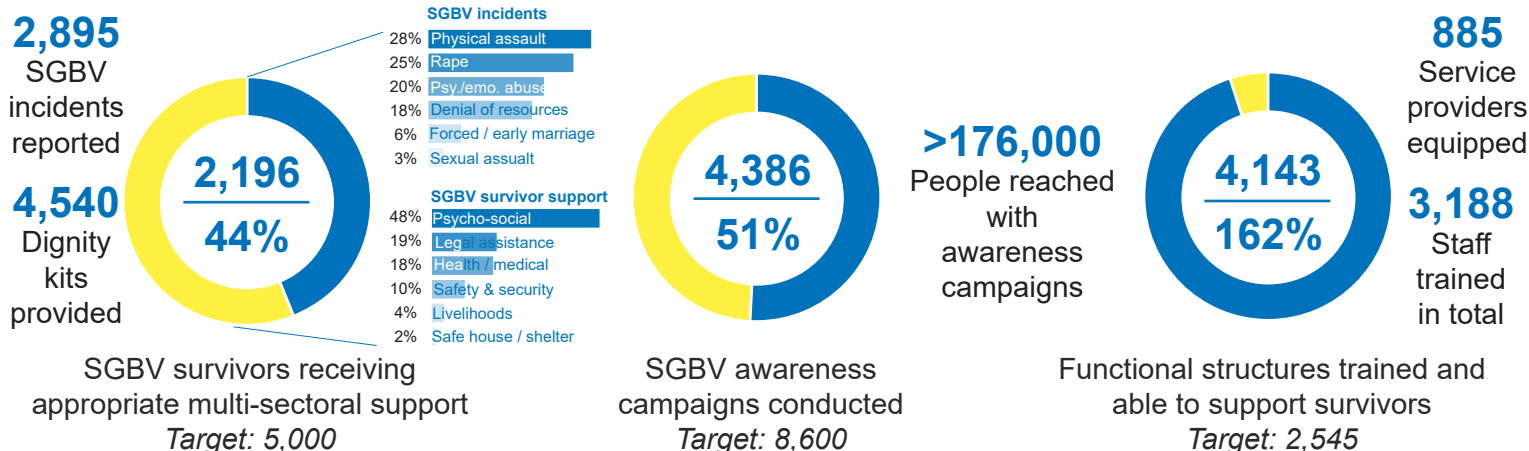




Overview

Awareness-raising remains key to improve understanding of SGBV, Sexual Exploitation and Abuse (SEA), human trafficking and existing mechanisms to report such incidents, including through the development and dissemination of simplified referral pathways. Basic assistance for vulnerable individuals will continue with a view to reduce reliance on negative coping mechanisms and exposure to SGBV risk. Investment in infrastructure and assets is also crucial in preventing and responding to SGBV, including installation of security lights in common areas, establishment of safe spaces and wellness centres for women, psychosocial, medical and legal supports for SGBV survivors, and procurement of additional vehicles and motorcycles to enhance police mobility on patrol and outreach. Linkages with the Livelihood & Resilience sector are of particular importance, both in terms of prevention (economic empowerment of men and women) and response (livelihood support for SGBV survivors).

Key indicators



Objective: Protection systems are strengthened and refugees women and girls are aware of the existing referral pathways with the aim of ensuring their full enjoyment of rights, reduction of SGBV risks and reinforced multi-sectoral response including through mainstreaming of SGBV across all sectors

Indicator	Actual	Target (2020 revised)	Actual against annual target
SGBV awareness campaigns conducted			
- Congolese and other refugees	599	4,500	13%
- South Sudanese refugees	3,787	4,000	95%
- Burundian refugees	0	100	0%
- Host community	497	N/A	0%
SGBV survivors receiving appropriate multi-sectoral support			
- Congolese and other refugees	881	2,500	35%
- South Sudanese refugees	1,385	2,300	60%
- Burundian refugees	75	200	38%
Functional structures (duty bearers) trained and able to support survivors			
- Congolese and other refugees	1,895	1,500	126%
- South Sudanese refugees	2,248	1,000	225%
- Burundian refugees	0	45	0%
- Host community	664	N/A	0%

Operational Presence

Koboko

HADS, UNHCR

Yumbe

Alight, CARE, IRC, SCI, TPO, UNFPA, UNHCR, UNWOMEN, WVI

Terego & Madi Okollo

CARE, DRC, SCI, TPO, UNHCR, UNWOMEN, WVI

Adjumani

CARE, LWF, UNHCR

Kikuube

Alight, CAFOMI, CARE, LWF, TPO, UNFPA, UNHCR

Kyegegwa

Alight, IRC, TPO, UNHCR, UNWOMEN

Kamwenge

Alight, LWF, UNHCR

Kisoro

CAFOMI, UNHCR

Lamwo

CARE, LWF, UNFPA, UNHCR

Obongi

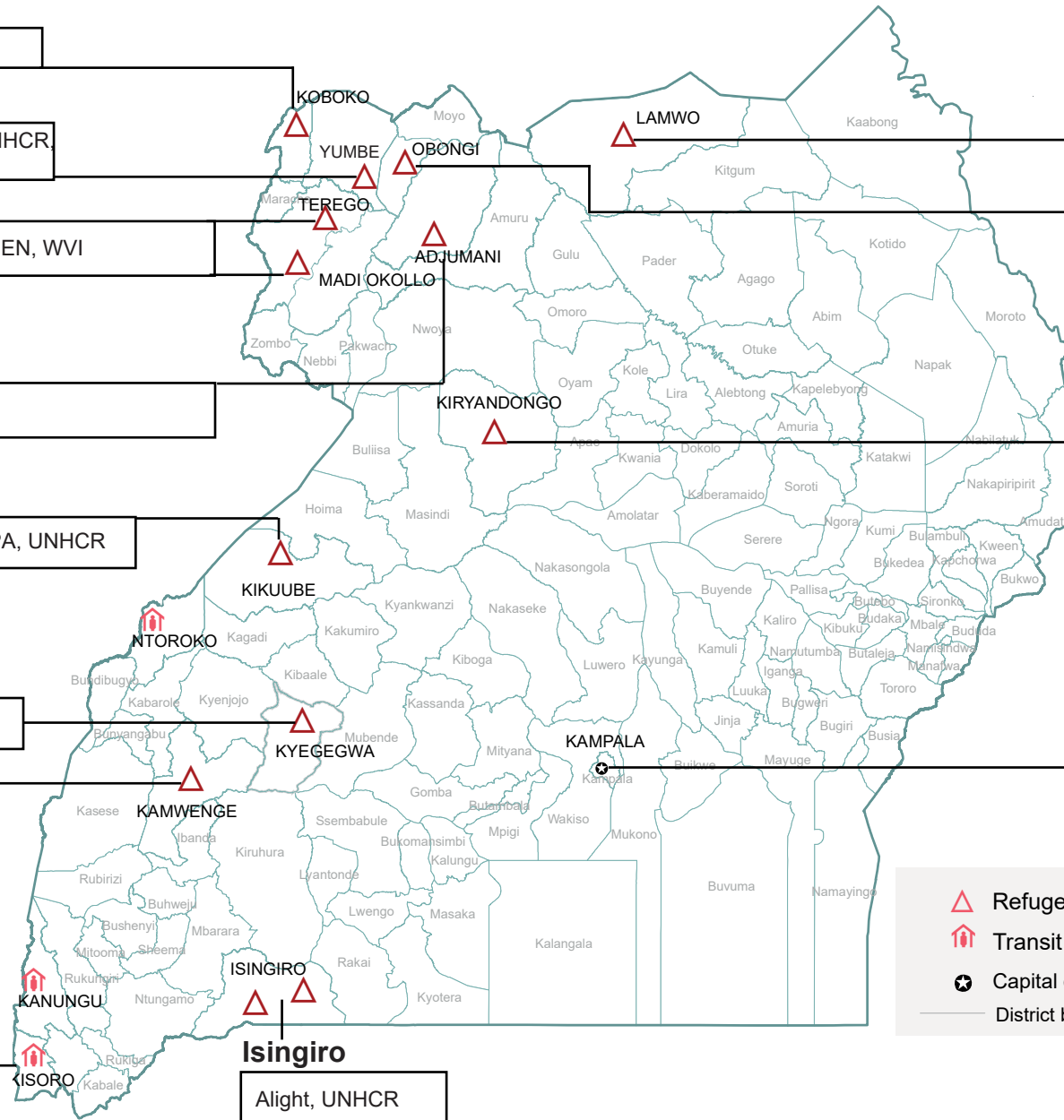
CARE, CFI, LWF, UNFPA, UNHCR




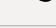
Kiryandongo

ACORD, DRC, TPO, UNFPA, UNHCR, UNWOMEN

Kampala

CAFOMI, IRC, NRC, UNHCR



-  Refugee settlement
-  Transit centre
-  Capital city
-  District boundary