

DEMOCRATIC REPUBLIC OF THE CONGO

MONTHLY STATISTICS - CENTRAL AFRICAN REFUGEES



Total **173,731**

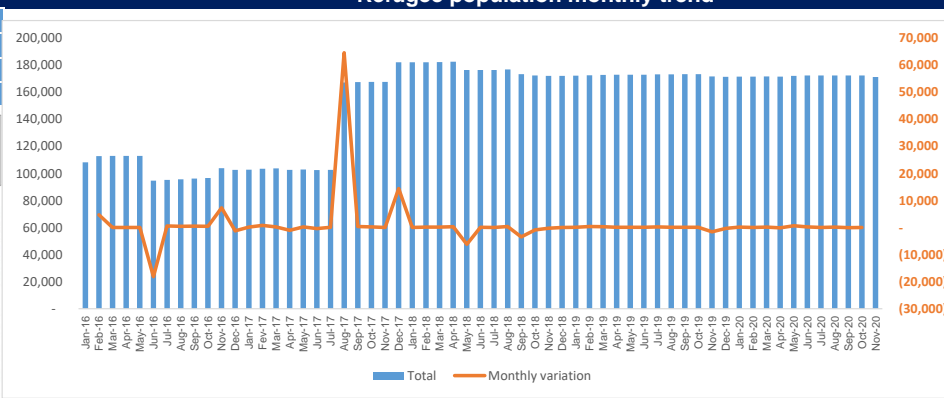
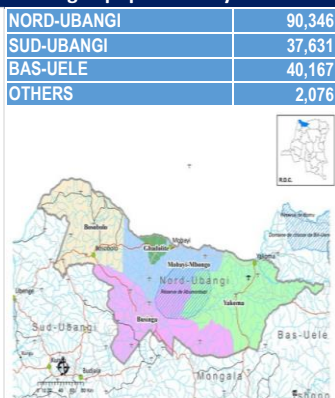
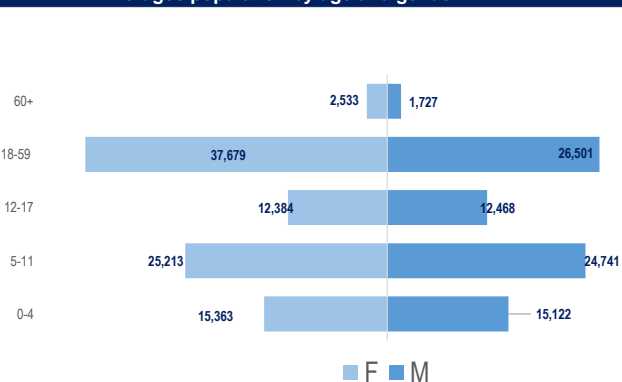
Situation as of December 31, 2020

Province	Territory/City	Location		F 0-4	F 5-11	F12-17	F 18-59	F 60^	S/ Total	M 0-4	M 5-11	M 5-17	M 18-59	M 60^	S/ Total	Total
Urban																
Kinshasa	Kinshasa	Kinshasa	BIMS	14	28	21	66	2	131	8	18	13	96	5	140	271
Haut-Katanga	Lubumbashi	Lubumbashi	BIMS	-	-	-	1	-	1	-	-	-	3	-	3	4
Total Urban				14	28	21	67	2	132	8	18	13	99	5	143	275
In Camp																
Bas Uélé	Ango	Mboti	proGres	109	56	37	116	5	323	103	64	45	173	10	395	718
Nord Ubangi	Mobayi Mbongo	Inke	BIMS	1,530	2,592	1,542	3,355	266	9,285	1,531	2,546	1,645	2,730	145	8,597	17,882
Nord Ubangi	Bosobolo	Bili	BIMS	1,053	1,423	698	1,462	121	4,757	1,025	1,490	781	1,472	110	4,878	9,635
Sud Ubangi	Libenge	Boyabo	BIMS	925	2,423	1,229	3,242	173	7,992	918	2,374	1,196	1,767	68	6,323	14,315
Sud Ubangi	Lbenge	Mole	BIMS	1,086	2,267	1,333	3,075	159	7,920	1,047	2,142	1,182	1,881	64	6,316	14,236
Total in Camp				4,703	8,761	4,839	11,250	724	30,277	4,624	8,616	4,849	8,023	397	26,509	56,786
Rural																
Bas Uélé	Bondo	Bondo	proGres	1,342	1,224	527	2,409	140	5,642	1,283	1,225	533	1,552	142	4,735	10,377
Bas Uélé	Bondo	Bondo	BIMS	184	338	123	367	46	1,058	168	285	120	101	15	689	1,747
Bas Uélé	Bondo	Baye Gaya	BIMS	319	466	211	731	58	1,785	314	462	225	666	59	1,726	3,511
Bas Uélé	Bondo	Nzeret	BIMS	414	348	114	1,025	31	1,932	397	279	109	532	18	1,335	3,267
Bas Uélé	Bondo	Monga	BIMS	394	487	172	812	50	1,915	393	442	138	212	12	1,197	3,112
Bas Uélé	Bondo	Ndu	BIMS	1,700	1,661	888	4,011	219	8,479	1,773	1,607	836	2,607	94	6,917	15,396
Bas Uélé	Bondo	Kanzawi	BIMS	418	355	123	909	46	1,851	427	344	107	511	51	1,440	3,291
Bas Uélé	Bondo	Mbiti	BIMS	512	474	197	1,108	60	2,351	477	424	140	585	29	1,655	4,006
Haut Uélé	Dungu	Dungu	BIMS	3	6	1	11	-	21	10	10	3	10	-	33	54
Nord Ubangi	Gbadolite	Gbadolite	BIMS	723	1,633	742	2,259	159	5,516	686	1,616	769	1,806	131	5,008	10,524
Nord Ubangi	Mobayi Mbongo	Mobayi Mbongo	BIMS	2,651	4,822	2,454	7,253	559	17,739	2,620	4,834	2,518	5,360	419	15,751	33,490
Nord Ubangi	Yakoma	Yakoma	BIMS	536	1,374	583	1,650	143	4,286	506	1,370	624	1,123	97	3,720	8,006
Sud Ubangi	Zongo	Zongo	BIMS	148	612	271	819	48	1,898	124	603	276	554	40	1,597	3,495
Sud Ubangi	Libenge	Libenge	BIMS	253	934	458	1,255	83	2,983	263	910	472	904	53	2,602	5,585
Total Rural (Out of Camp/Site/TC)				9,597	14,734	6,864	24,619	1,642	57,456	9,441	14,411	6,870	16,523	1,160	48,405	105,861
Rural registered 2018-2019																
Nord Ubangi	Bosobolo	Gboko	BIMS	122	95	22	163	13	415	109	95	35	139	9	387	802
Nord Ubangi	Bosobolo/Bili	Bosobolo	BIMS	927	1,595	638	1,580	152	4,892	940	1,601	701	1,717	156	5,115	10,007
Total Rural registered in 2018 & 2019				1,049	1,690	660	1,743	165	5,307	1,049	1,696	736	1,856	165	5,502	10,809
TOTAL				15,363	25,213	12,384	37,679	2,533	93,172	15,122	24,741	12,468	26,501	1,727	80,559	173,731

Refugee population by age and gender

Refugee population by Province

Refugee population monthly trend



Refugee Population Biometrically Enrolled with BIMS ("Biometric Identity Mangement System"):161,204

Source: UNHCR. For more information on refugee statistics in DRC, please contact: CODKIDRCIM@UNHCR.ORG