

Stepped-up Livelihoods response

Responding to Covid19 Impact on POC
Livelihoods in EHAGL


2020-2025

VISION

UNHCR's vision for refugees' economic inclusion is that **all refugees are able to overcome poverty and dependence through participation in host country economies, and that both refugees and host communities enjoy shared prosperity, expanded access to employment and entrepreneurship services and decent work opportunities, and improved social cohesion.**

Refugee Livelihoods and Economic Inclusion

- New York Declaration for Refugees and Migrants and its Global Compact on Refugees (GCR) including the Comprehensive Refugee Response Framework (CRRF) call for the enhancement of refugee resilience and self-reliance, as well as the need for and benefit of taking on a whole-of-society approach.



UNHCR
The UN Refugee Agency


Refugee Livelihoods and Economic Inclusion

2019-2023 Global Strategy Concept Note

Engage in advocacy to enhance the enabling environment such that refugees have legal and de facto access to decent work (such as through rights to work, own a business, access financial services, land/property ownership, and freedom of mobility).

Partner with and convene expert entities to facilitate inclusion of refugees into existing programmes/services.

- Conduct consultations with different types of stakeholders, such as:
 - Financial and Business Development Service Providers
 - Private Sector (companies, chambers of commerce, employment agencies, business associations)
 - Training Institutes (public and private)
 - Development Actors
 - NGOs
 - Governments
 - UN Agencies
 - Academia and Research Institutions
- Complete an institutional mapping exercise to see if inclusion is viable, considering:
 - Whether actors have relevant services for refugees
 - Capacity, incentives and influence of actors to include all targeted refugees; and
 - Expertise of entities and quality of market-based interventions.



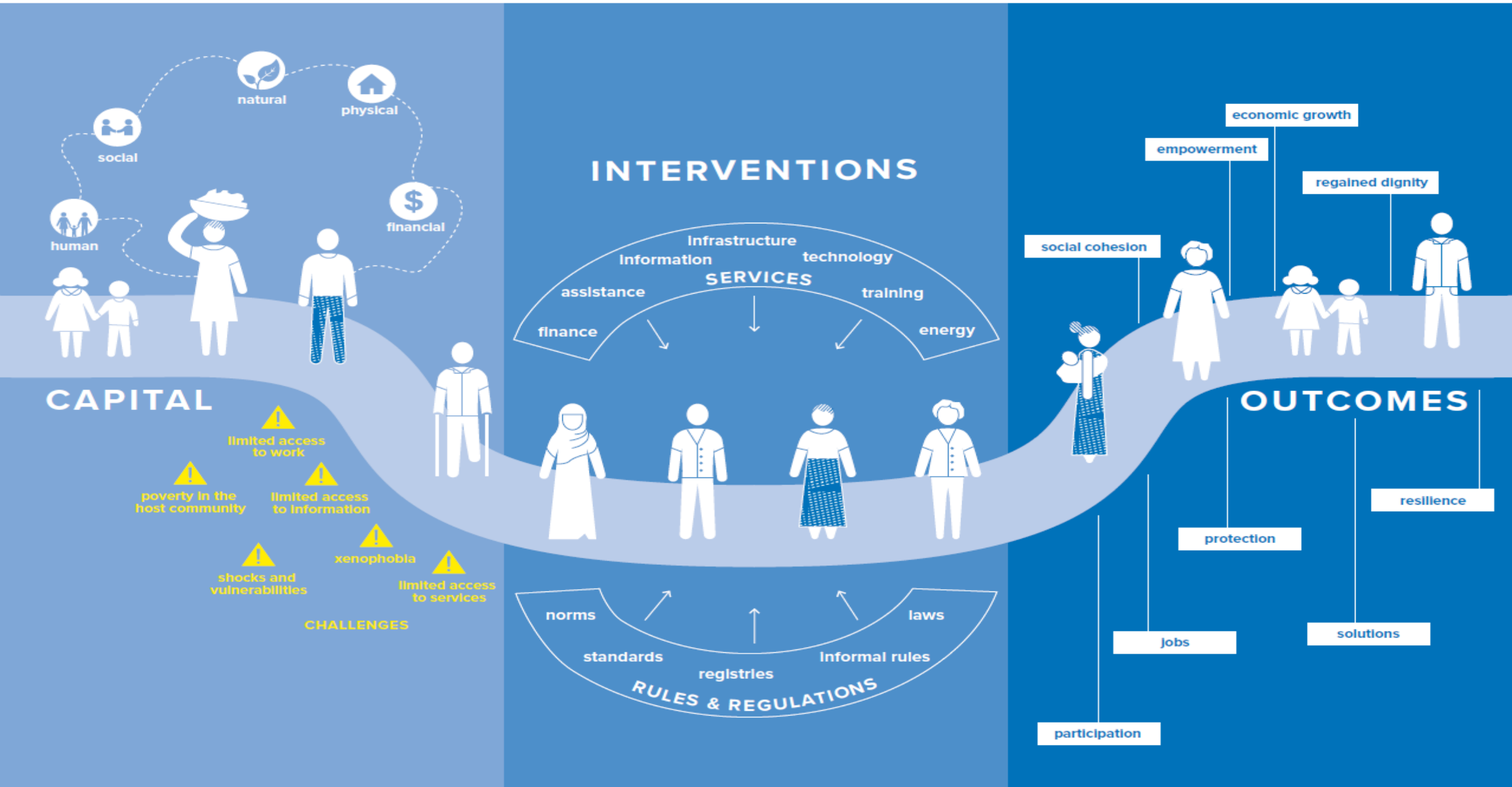
As a last choice, implement interventions to fill a gap in service only when:

- There is limited or no presence of expert entities who can include refugees; or
- The engagement of other stakeholders is not possible or still insufficient to meet the needs of refugees.

In cases of implementation, operations are recommended to apply the **Minimum Economic Recovery Standards**, which were initially a great contributor to the development of the Minimum Criteria for Livelihoods Programming.

INCLUSIVE MARKET SYSTEM

Improving livelihoods of forcibly displaced persons and host communities through economic & financial inclusion

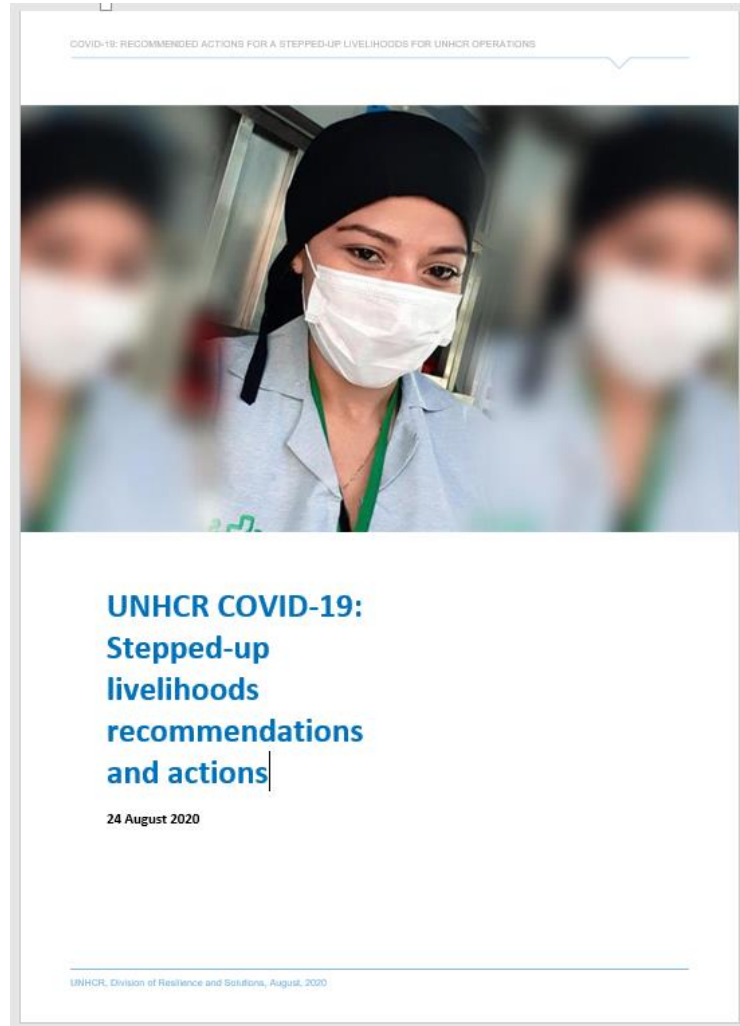


Key challenges

UNHCR internal survey from 2019

- **Country legal frameworks** not conducive to foster formalised access to employment: 88% of refugees have restricted right to work, 70% have limited freedom of movement and access to markets and 65% of refugees have limited access to bank accounts.
- **Pre-existing poverty, low saving rates, and lack of economic assets** diminish the resilience to respond to additional economic shocks as triggered by the pandemic containment measures.
- **Access to entrepreneurship is limited by access to formal financial services:** Refugee business face challenges in accessing loans, formalizing businesses and inclusion into existing value chains.
- **Fourthly, limited access to training and skills development and recognition** renders many income generating opportunities unattainable.

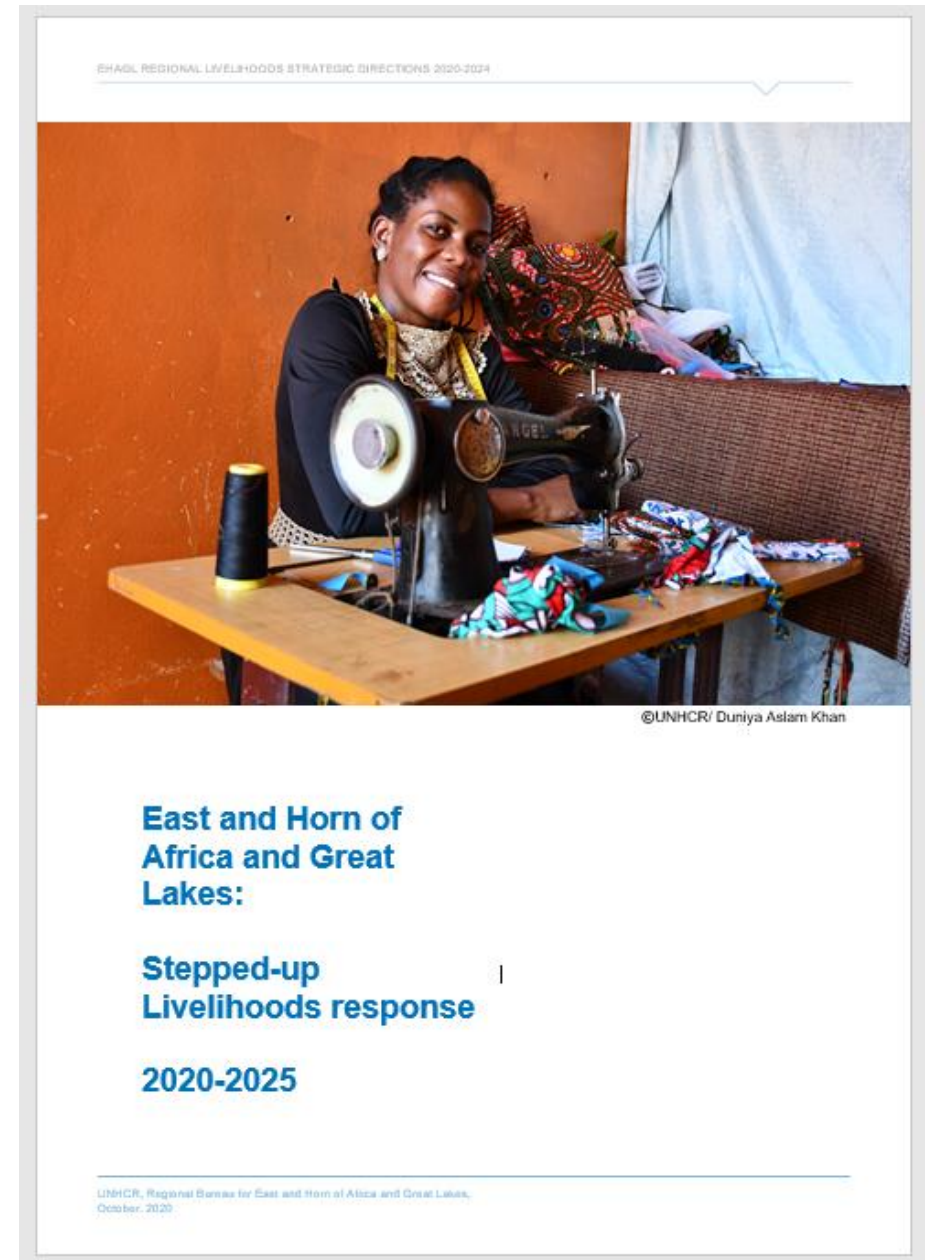
Why a “COVID-19 Livelihoods strategy”?



- ✓ **Respond to the disproportionate socio-economic impact** that COVID-19 has on POCs.
- ✓ **Respond to High Commissioners request** on enhancing livelihoods opportunities in the field and **positioning** livelihoods as a central piece of any COVID-19 response

Livelihoods Subobjectives for the EHAGL region

- **Data/Information Management:** Market and evidence-based livelihoods programming for POCs is enabled in the region through the creation of a solid evidence base.
- **Advocacy:** Legal and de facto economic inclusion of POCs is fostered through advocacy and burden-sharing with host governments.
- **Partnerships:** POCs are included in self-reliance projects across the humanitarian-development nexus.
- **UNHCR Implementation:** UNHCR LH country programs are aligned with global and regional LH directions and are designed and managed effectively.



Data/Information-Management: Market and evidence-based livelihoods programming for POCs is enabled in the region through the creation of a solid evidence base.

Actions	Outputs	Key partners
Promote inclusion of POCs in national or regional Socio-Economic Assessments and surveys and share results publicly via the joint UNHCR/WB Micro library	<ul style="list-style-type: none"> ➤ POCs are an integral part of national socio-economic assessments. ➤ In consequence PoCs are increasingly included in national responses to poverty, unemployment, etc through using data to inform evidence-based advocacy. ➤ LH planning across the humanitarian development nexus considers POCs and host communities alike. 	Governments, National Bureau of Statistics, World Bank, DFID, UN Agencies, GCR section
Support interagency assessments and joint targeting	<ul style="list-style-type: none"> ➤ Agencies, INGOs and partners use harmonized targeting methodologies to jointly assist POCs with best suited support in for instance Poverty Alleviation Projects, for Cash and Livelihoods interventions. ➤ PAC partners and operations are using the Self-Reliance Index (SRI) to measure progress of POCs self-reliance. The data in turn are used to further PAC fundraising and GRF reporting. ➤ POCs are integrated in ILO and host government labour market assessments. 	UNHCR/WFP excellence and targeting hub , joint PAC targeting, ILO, IFC, FAO
Facilitate the use of UNHCR Socio-economic Assessments toolkit	<ul style="list-style-type: none"> ➤ Country operations that are not able to include POCs in joint or partners assessments are capacitated to conduct their own socio-economic assessments using UNHCR toolkit. ➤ Accurate and useful data is produced on POCs, allowing for better advocacy and project development 	UNHCR DRS in cooperation with national partners
Continue to develop the Economic Inclusion Exchange East Africa website as key report and webinar repository	<ul style="list-style-type: none"> ➤ Key reports are uploaded to the shared interagency website and are used by partners and operations to inform programming. ➤ Concise presentations are shared by partners and approaches are discussed, researched and jointly validated. 	Partners across the humanitarian-development nexus
Encourage new research to identify sectors and approaches suited to integrate PoCs	<ul style="list-style-type: none"> ➤ New opportunities for POCs are identified in emerging fields such as: Green economy, Digital economy and Care economy, and Local Economic Development 	Private sector, academia, UN agencies and NGOs
Ensure information is up cycled into global report and external briefs	<ul style="list-style-type: none"> ➤ Key global, regional and country reports feature information, data and analysis from the region. ➤ Data and information gathered from the field, socio-economic assessments are analysed and shared with colleagues from other sections and senior management and provide compelling data for external engagements including reporting products media, partnership engagement. 	UNHCR country operations

Economic Inclusion Exchange East Africa

Economic Inclusion Exchange East Africa

Working Group Description

The economic inclusion exchange on displacement is an exchange forum for members of regional INGOs, UN agencies, IFIs, CSOs, research institutes across the humanitarian-development nexus in Eastern Africa. It stimulates discussions, research, and sharing of best practices related to the livelihoods and economic inclusion of refugee, returnees, other persons in displacement and their host communities. It is an open platform for discussion of partners advocating, researching, investing and realizing projects that strengthen self-reliance and resilience, reduce the need of assistance, contribute to economies, increase protection and enhance durable solutions. "Economic inclusion means enabling refugees to provide for themselves and be net contributors to economic development as consumers, workers and entrepreneurs. It is one of the most important keys to enhancing protection and unlocking solutions for refugees" (Filippo Grandi, United Nations High Commissioner for Refugees)

Working Group Documents

- All Documents (165)
- COVID-19 (32)
- Dashboards & Factsheets (3)
- Guidance (17)
- Meeting Minutes and Presentations (18)
- Reports (1)
- Reports and Assessments (92)
- Reports and Policy Papers (11)
- Strategy Documents (2)
- Training Materials (5)
- Updates (16)



Moyo District and Obongi District Local Economic Development Strategy Launch

DOCUMENT [Download](#) [View details](#) | 1.25 MB | Download Count: 3
Moyo District and Obongi District Local Economic Development Strategy Launch
Published: 11 November 2020 (5 days ago)
Uploaded: 13 November 2020 (3 days ago)
Share this document: [Share](#)



Emerging Markets Compass Note: Impacts of COVID-19 on the Private Sector in Fragile and Conflict-Affected Situations

DOCUMENT [Download](#) [View details](#) | 243.96 KB | Download Count: 17
The COVID-19 pandemic is having a significant negative impact on the private sector in developing economies, and businesses and individuals in fragile and conflict-affected situations are among the most vulnerable.
Published: 9 November 2020 (7 days ago)
Uploaded: 10 November 2020 (6 days ago)
Share this document: [Share](#)



Uganda: Vulnerability and Essential Needs Assessment - Final report, October 2020

DOCUMENT [Download](#) [View details](#) | 3.61 MB | Download Count: 3
Report on the Vulnerability and Essential Needs Assessment carried out in 2019. The assessment covered 6,000 refugee households across all 13 refugee settlement locations in Uganda and produced representative findings.
Published: 6 November 2020 (10 days ago)
Uploaded: 12 November 2020 (3 days ago)

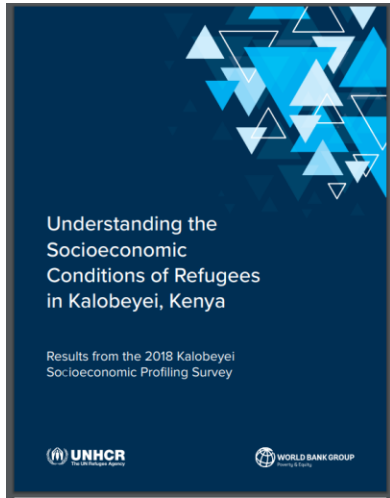
Working Group Key Contacts

- Anna Gaunt**
UNHCR Senior Livelihoods and Economic Inclusion Officer Regional Bureau for the East and Horn of Africa, and the Great Lakes Region
gaunta@unhcr.org
- Sarah King**
Norwegian Refugee Council Regional Livelihoods & Food Security Adviser East Africa & Yemen Regional Office
sarah.king@nrc.no
+254 0716430333 or +254 20 3216000
+254 (0)725 800495 or +254 (0)705 000440

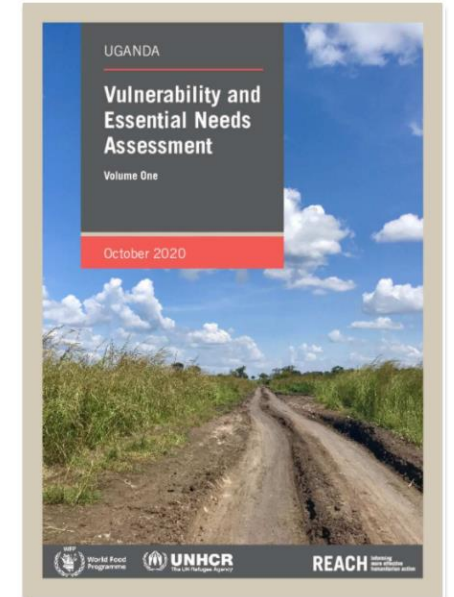
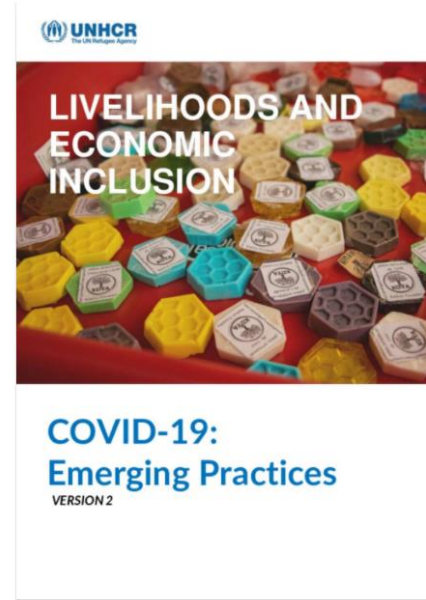
Highlights

- Local Economic Development Strategy Launch – Moyo and Obongi Districts** On 20 November, with support of their local economic development partners, UNHCR and Deutsche Gesellschaft für Internationale Zusammenarbeit (GIZ), the Moyo district and Obongi district are launching their Local Economic Development (LED) Strategy. Both these districts have had mass influxes of refugees over the last few years, with over 123,000 registered refugees in Palorinya settlement, Obongi. They have formulated their five year development plans under the Comprehensive National Development Framework with a vision to have a transformed population that is productive and prosperous by 2040. The main pillars of the LED strategy are enabling infrastructure, supporting local private sector development, upgrading human capital, attracting investment and changing attitudes towards local economic development. The inclusion of refugees in the district development plans marks a watershed in the humanitarian-development nexus, and provides stakeholders with a structure to transition towards resilience building interventions. Please find more information in the uploaded LED brochure and for further details contact Teresa Ongaro (Head of Field Office, Moyo, Uganda)
13 Nov 2020
- IKEA Foundation contributes \$3.5 million to support FAO's work with refugees and host communities in eastern Africa:** FAO, in collaboration with UNHCR, proposes to strengthen partnerships between the public

Upcycling information – best practices



COVID-19:
Emerging Practices



Advocacy: Legal and de facto economic inclusion of POCs is enabled though advocacy and burden-sharing with host governments.

Actions	Outputs	Key partners
Conduct rights-based advocacy for legal economic inclusion into labour markets	<ul style="list-style-type: none"> ➤ Joint regional rights assessments on right to employment and self-employment, and right to land tenure to inform advocacy. ➤ Country and regional normative and policy frameworks enable POCs access to labour markets, right to own a business, freedom of movement, recognition of skills and decent work. ➤ RACs including EAC and IGAD receive required support implementation of key frameworks, policies, advocacy interventions (IGAD support platform and Kampala Declaration on Jobs and Livelihoods) 	UNHCR Protection and DIP, Host governments, WB, IGAD, EAC, UN agencies, MFIs, NGOs, donors, academia
Facilitate GRF pledge matching in support to key government pledges, and the launch of the IGAD support platform	<ul style="list-style-type: none"> ➤ GRF livelihoods pledges in the region are progressing and enabling POC self-reliance. ➤ Pledge progress issued for advocacy for more win-win opportunities. 	All pledging partners, IGAD, private sector, donors
Provide Technical support to government led projects	<ul style="list-style-type: none"> ➤ POC economic inclusion is improved in specific thematic or geographical areas. Government officials are aware of the win-win opportunities that economic inclusion of PoCs brings. ➤ Local Economic Development strategies are supported, and external funding solicited. 	UNCTAD, IOM, ILO, national bodies, TVET institutions, municipalities
Advocacy for inclusion in national COVID-19 responses and economic stimulus	<ul style="list-style-type: none"> ➤ Refugees recover more self-reliance from the pandemic as fewer are forced to deplete or sell their income generating assets or businesses. ➤ Key partnerships are leveraged to advocate for an improved policy environment. 	Donor and recipient countries of ODA, IMF or WB IDA

Partnerships: POCs are included in self-reliance projects across the humanitarian-development nexus.

Actions	Outputs	Key partners
Facilitate bridging of the humanitarian development nexus through regional working group	<ul style="list-style-type: none"> ➤ Better coordination between humanitarian and development actors leads to meaningful interventions for affected POCs. ➤ Joint advocacy objectives are formulated. 	UN agencies, INGOs, NGOs, CSOs, Research institutes, government bodies
Support partners pledge implementation and matching from the Global Refugee Forum	<ul style="list-style-type: none"> ➤ POCs livelihoods are improved through the interventions and livelihoods programmes by actors such as IKEA Foundation, the African Entrepreneurship Collective, KIVA, etc. 	GRF pledging partners, donors,
Attract private sector through multi-stakeholder forums, and cooperation in ongoing projects	<ul style="list-style-type: none"> ➤ More refugees are employed in private sector companies and receiving relevant services, providing higher degrees of stable and formal employment for refugees. ➤ Private sector partners see the advantages of employing POCs and working with POC owned enterprises. ➤ successful pilots in Uganda of joint UNCTAD, IOM private sector support training 	Private sector partners, AMAHORO coalition, chambers of commerce, UNCTAD, IOM, IFC, MFIs

GRF Livelihoods pledges

Total of **38** pledges targeting **Jobs and Livelihoods** thematic area of focus were identified as potentially relevant to the East, Horn of Africa and Great Lakes region.

States in the region made **9 pledges** distributed by pledging entity as follows: Ethiopia (1); Rwanda (3); Somalia (1); Sudan (2) and Tanzania (1).

There were **29 pledges** made by Donor States (3); International organizations including UN agencies (5); NGOs (14), the Private Sector (6) and Academic and research institutions (1) that are either country-specific, multi-country or regional in nature.

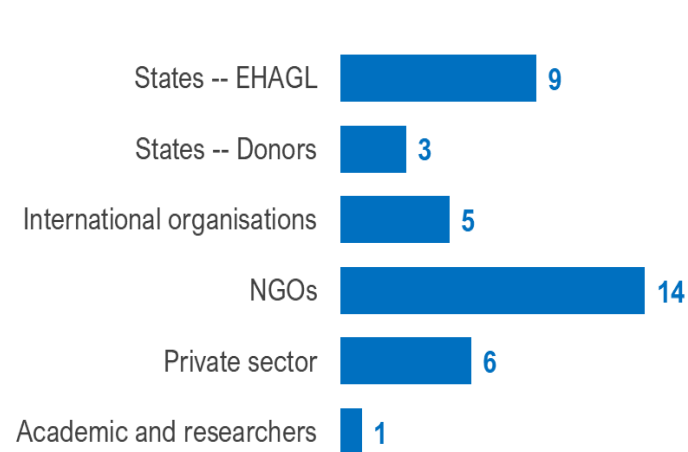


Fig. 1: Jobs and Livelihoods pledges by pledging entity

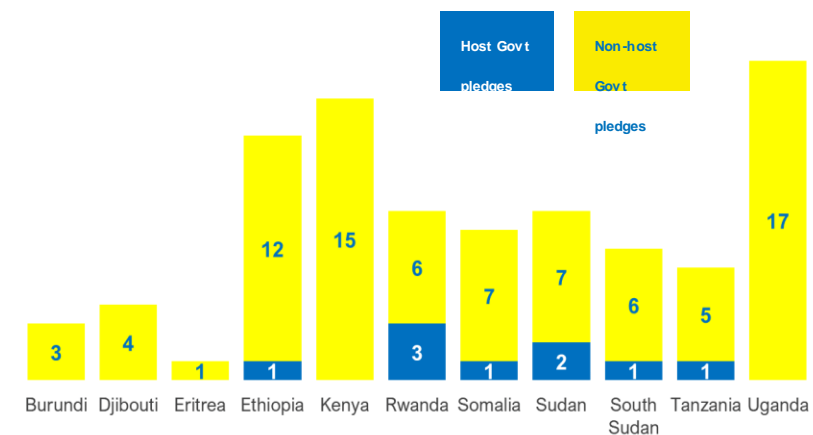


Fig. 2: Jobs and Livelihoods pledges by receiving country

Action: **Facilitate the implementation of the Poverty Alleviation Coalition (PAC) at country level and in cooperation with ReDSS**

Outputs

- 150,000 extremely poor households are offered livelihoods programmes (graduation approach) by 2025, improving particularly for those in the informal economy.
- New partners such as WFP, UNCTAD, FAO are aware of the PAC and are included in complementary programming.
- PAC partners use joint key indicators of impact, and are increasingly adopting the Self-Reliance-Index

Partners

- PAC partners, donors, SRI

Examples

- PAC guidelines, country calls with partners, review of concept notes regional webinars (2x in 2020), SRI training (upcoming), ReDDS sub-group in 2021

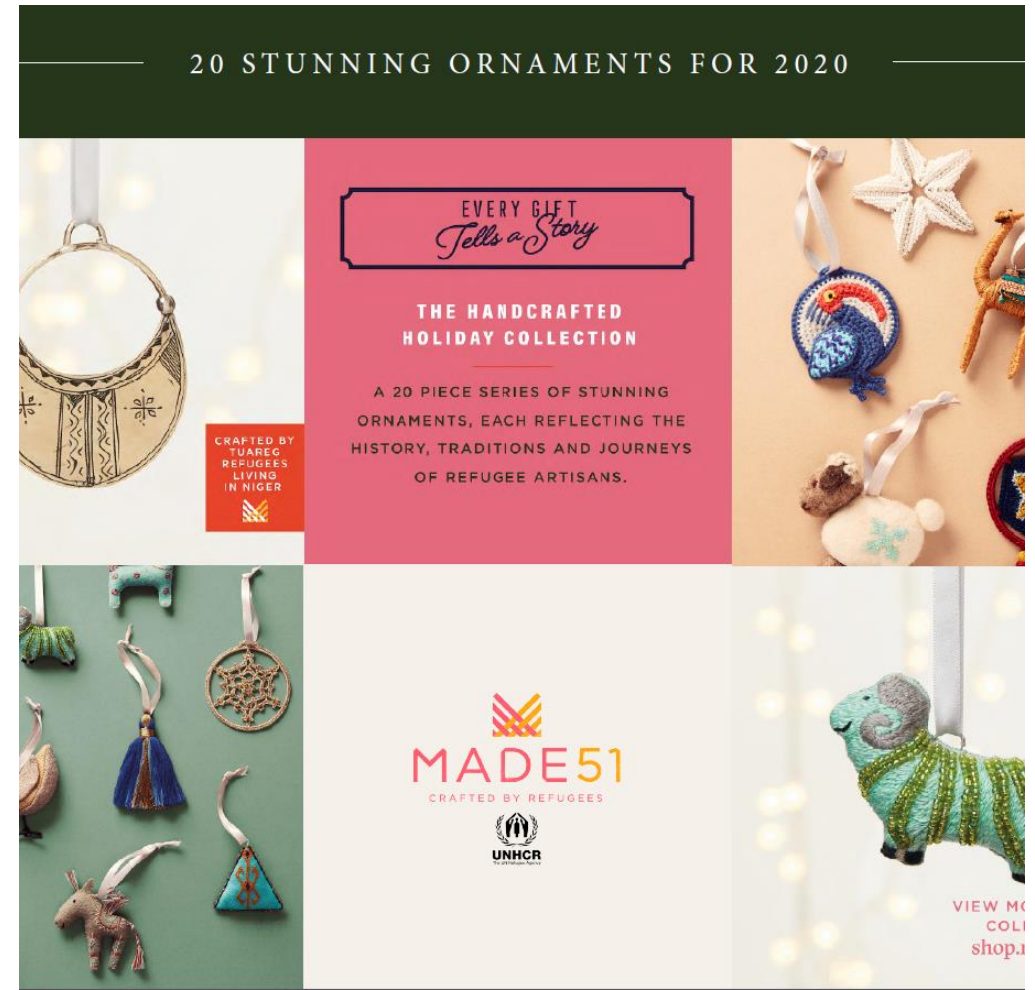


MADE 51

Strengthen the MADE51 artisanal regional network and increase access of refugees to global value chains

- MADE 51 regional networks are expanding and have improved access to regional sales outlets.
- Artisan refugees have improved income and received capacity building to compete in the global artisan market.
- Global advocacy messaging strengthened that refugees have a distinct culture, capacities and traditions that are worth preserving.

MADE 51, Social enterprises, artisans, NGOs, national and international buyers



UNHCR- FAO partnership

Based on the global MoU enhance the partnership with FAO to ensure inclusion of refugees into agricultural, energy and natural resource management programs and improve knowledge sharing

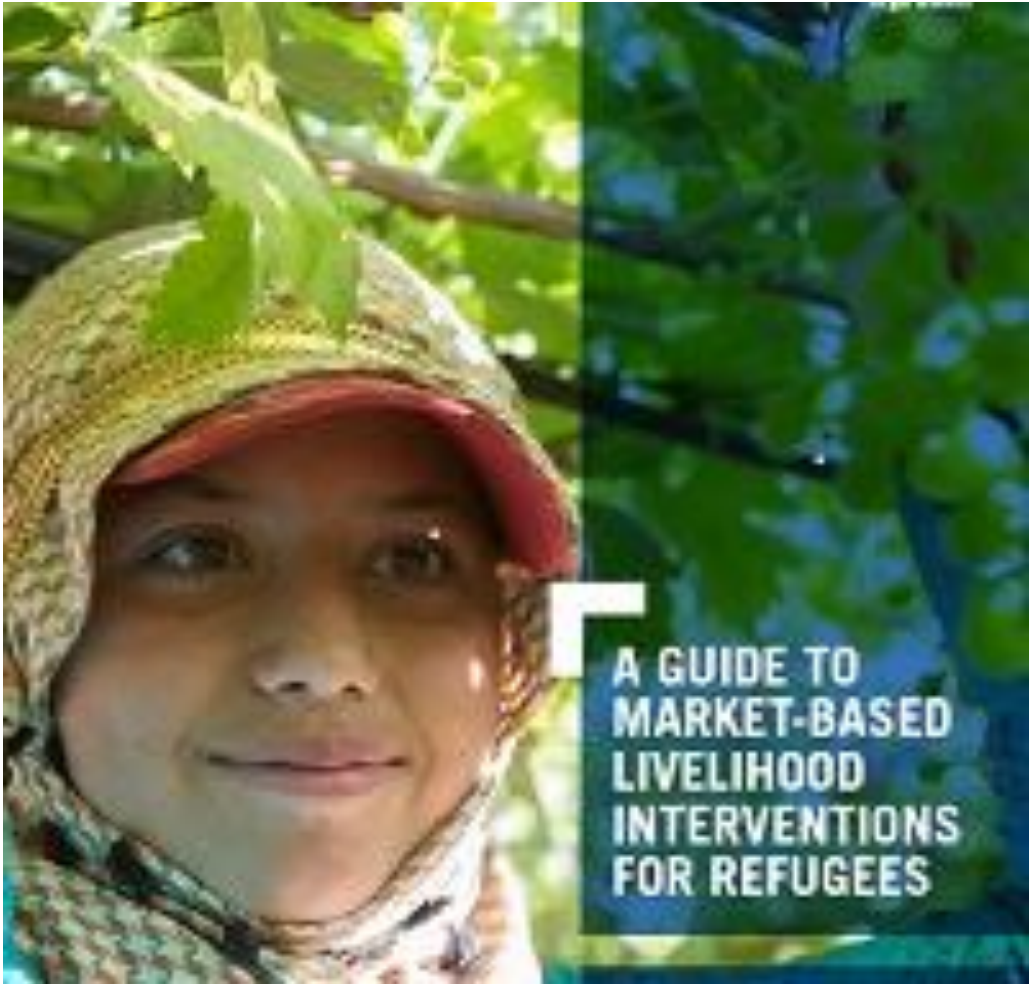
- FAO/UNHCR partnership is strengthened and POCs included into FAOs ongoing projects, advocacy and assessments.
- Joint projects are developed at country level befitting POC food security and income levels.
- IKEA Foundation value-chain project in Kenya and Uganda linking refugees to key national and global value chains and is providing employment.
- Joint training is developed for UNHCR and FAO staff
- Enhanced joined communication on food security
- Joint research on Land Tenure rights

FAO, donors, NGO and other implementing partners



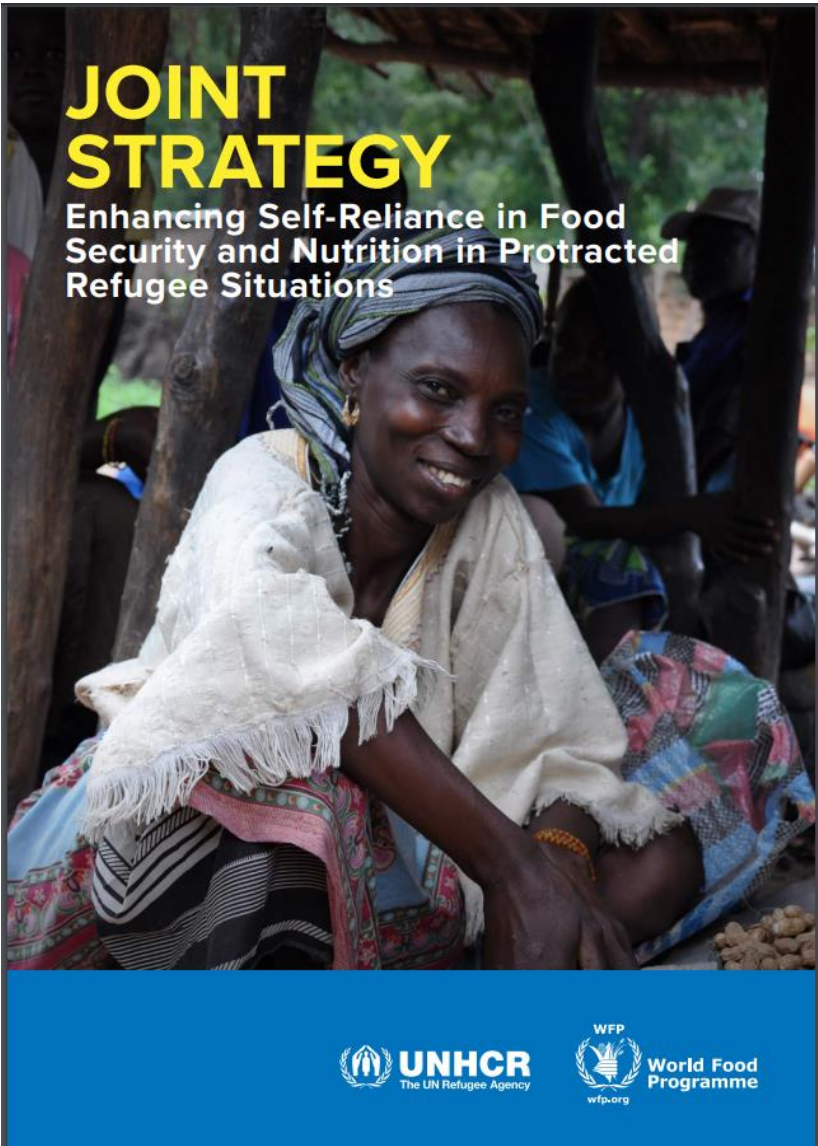
UNHCR- ILO partnership

<p>Based on the global MoU enhance the partnership with ILO to ensure a rights-based approach, joint project implementation and decent work for PoCs.</p>	<ul style="list-style-type: none">➤ ILO/UNHCR partnership is strengthened and POCs included into ILOs ongoing projects, advocacy and assessments, including job centres, trainings, and Employment Intensive Projects (EIPs)➤ Projects under the PROSPECTS partnership are jointly developed and implemented benefiting POCs.➤ Based on a joint TVET research, POCs inclusion in national TVET projects is market based and enhanced.➤ New cooperation opportunities in green jobs, care economy, labour mobility, digital economy is analysed and pilots initiated.➤ Joint Action plan is implemented	<p>ILO, donors, host governments, NGO and other implementing partners</p>
---	--	---



UNHCR-WFP partnership

<p>Based on the global MoU enhance the partnership with WFP ensure successful implementation of the HUB approach and improved alignment of LH approaches</p>	<ul style="list-style-type: none">➤ WFP/UNHCR partnership is strengthened, joint targeting, assessment and advocacy for LH projects is developed at pilot level in Rwanda and scaled- up regionally.➤ Synergies across existing and planned projects are established to assist POCs graduation from food dependency to self-reliance.➤ Improved regional advocacy and synergies between projects	<p>WFP, donors, PAC partners, NGO and other implementing partners</p>
--	--	---



UNHCR- IKEA F

Support IKEA F in the definition and implementation of the projects in EHAGL	<ul style="list-style-type: none">➤ Support dissemination of lessons learnt from Dollo Ado and Melkadida➤ Support in formulation and role out of the IRC lead urban project (30 million aprox. Kampala and Nairobi)➤ Facilitation of community readiness study	MADE 51, Social enterprises, artisans, NGOs, national and international buyers
--	--	--

Cooperation with IFI's

Strengthen collaboration with IFIs to unlock barriers to refugee employment and help create job opportunities.	<ul style="list-style-type: none">➤ IFIs and UNHCR advocate jointly for a rights-based access to labour markets and improved policy frameworks.➤ IFIs have sufficient support and information access to include POCs in existing and planned projects.➤ Facilitate outreach to IFA lead initiatives such as the KKCEF (over 20 million) in line with GISEDEP government lead programming➤ Support to the WB IDA 19 role out 500million to 1 billion aprox. (2 Billion world wide)	WB, AFDB, IFC, EIB and others
--	--	-------------------------------



The Kakuma Kalobeyei Challenge Fund

The Kakuma Kalobeyei Challenge Fund (KKCF) is a program of the International Finance Corporation (IFC), implemented with Africa Enterprise Challenge Fund, Turkana County Government, and UN. The five-year program is designed to support private sector investment and unlock the economic potential of refugees and their hosts, in Kenya's Turkana County.

Partnerships for Financial Inclusion

Enhance engagement with DFIs and donors to consider providing market-conducive incentives/blended finance for FSPs and investors during and in the aftermath of the crisis	<ul style="list-style-type: none">➤ POCs can access formal financial services through public and private funding or transferring risk to DFIs and donors (e.g., by co-investing, providing technical assistance, funding market research and creating guarantees).➤ Through formal financial services, POCs can access credit for their businesses and consumption needs, store their savings in a safe place, make financial transactions and receive foreign remittances.➤ Improved cross-sectorial cooperation capitalizing on bank partnerships from CBI and➤ Informal saving group guide implemented➤ UNHCR – UNCDF strategy is implemented at regional and country level	FSPs, government, donors
--	--	--------------------------



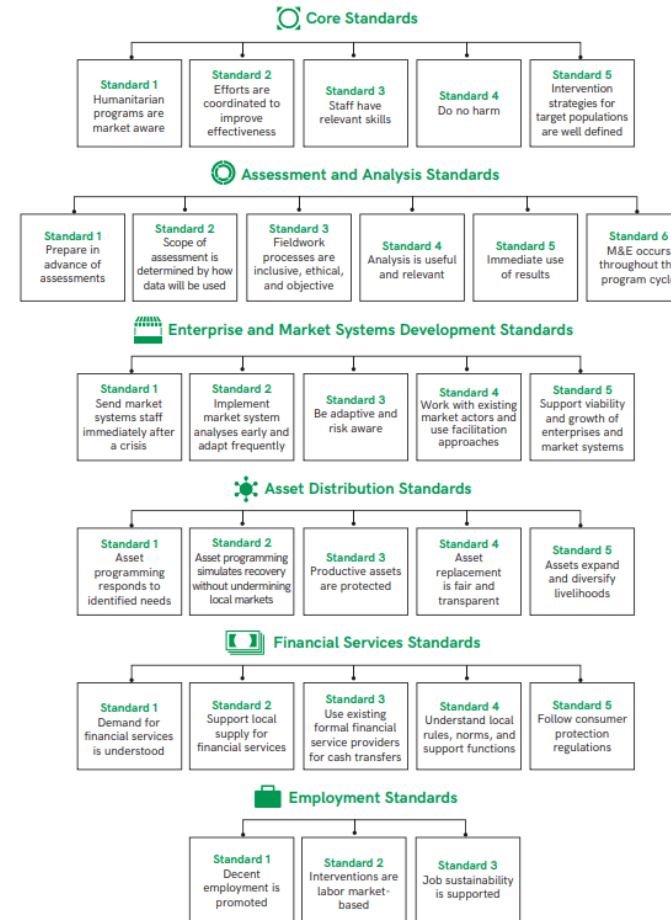
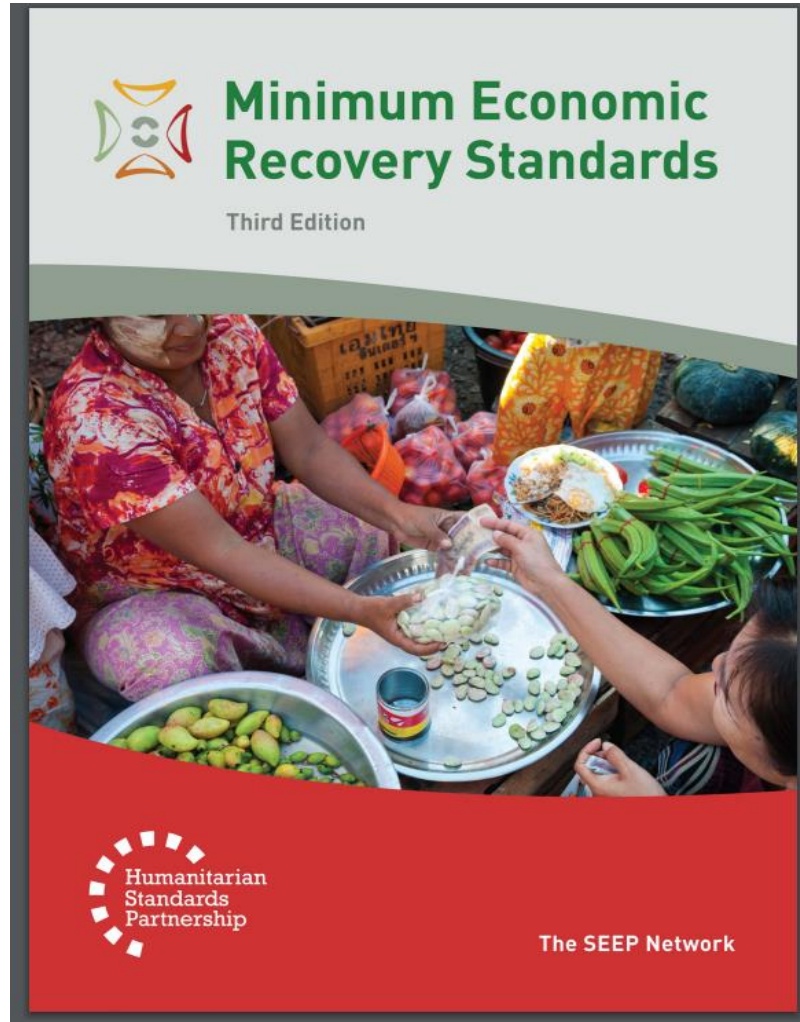
UNHCR-Implementation: UNHCR LH country programs are aligned with global and regional LH directions and are designed and managed effectively.

Actions	Outputs	Key partners
Provide technical support to country operations in line with the Stepped-up LH support package	<ul style="list-style-type: none"> ➤ Country level Livelihoods strategies are adapted to the Pandemic situation and the need for additional measures to assist refugees to regain their livelihoods. ➤ Support measures are offered across the steps and may include services such as capacity building, strategy development, resource mobilization, M&E, etc (Annex 1). ➤ Global LH training is aligned to regional needs and targeted webinars are offered to staff. 	Country operations in partnership with implementing partners
Ensure UNHCR funded livelihoods programmes are using the MERS standards where inclusion in responses by partners is not viable	<ul style="list-style-type: none"> ➤ Projects are developed and implemented in accordance with internationally recognised MERS standards and use funding effectively and efficiently. ➤ Refugees, who would otherwise not have a chance of livelihoods support, are in part supported by UNHCR. 	UNHCR and key implementing partners
Support country operations in accessing labour mobility pathways	<ul style="list-style-type: none"> ➤ Understanding of labour mobility as part of the global <u>Complementary Pathways Strategy</u> is strengthened and multifunctional teams established to pilot labour mobility seems. ➤ Mid-term approaches are developed with partners with refugees receiving training that enables them to find jobs in third countries. 	UNHCR protection and education teams, private sector partners, receiving states, ILO
Promote learning to earning solutions	<ul style="list-style-type: none"> ➤ Foster strong cooperation between education and livelihoods teams, to jointly reach out to new partners and to ensuring training/higher education responds to market needs. ➤ Improved labour market integration of POCs 	UNHCR education teams, ILO, National TVET institutions, INGOs
Support country level and RB <u>Evaluations</u>	<ul style="list-style-type: none"> ➤ Evaluations are conducted on select programmes to assess impact and causality and used to improve project design and cooperation with partners and inform programming 	UNHCR Evaluation Service and academia
Promote use of <u>global Livelihoods Information System</u>	<ul style="list-style-type: none"> ➤ UNHCR funded and implemented projects are monitored and monitoring results are used to improve project programming. 	UNHCR DRS, World Bank, <u>CartNog</u> and implementing partners

UNHCR Operations Needs Mapping

REGION	REQUESTING ENTITY	CATEGORY	REQUEST	Focal point	Prioritized?	RB Priority	CO Capacity and justification	Project initiated	Project delivery date	Service delivered	Human/financial resources	Comments
EHAGL	RB	RESEARCH	Care- (ILO, labour mobility), digital- (UNDP), green economy (other UNHCR?)	Cian O'Brien; Anna Gaunt (focal point); Ellen Lee		Yes				Not initiated		
EHAGL	RB	RESEARCH STRATEGY	Desk review of COVID-19 impacts	Ellen Lee		Yes			31st December 2020	Not initiated		
EHAGL	RB	PARTNERSHIPS & RESOURCES	Strategic review/draft/evaluation	Cian O'Brien	Yes			Yes	1st October 2020	Yes		The LEI unit wrote a strategy for/with the RB and it has now been passed to the LH officer for approval
EHAGL	RB	PAC		Cian O'Brien	Yes	Yes		Yes	1st October 2020	Yes		PAC regional briefing doc. The LEI unit wrote a strategy for/with the RB and it has now been passed to the LH officer for approval
EHAGL	RB	CAPACITY BUILDING	Livelihoods training (1)	Ellen Lee; Anna Gaunt	Yes	Yes			Q1 2021	Not initiated		Regional capacity building for new LH and cross sectoral cooperation (virtual support through webinars). 1 1/2 hours interactive workshop/presentation
EHAGL	RB	CAPACITY BUILDING	MERS (2)	Ellen Lee; Anna Gaunt	Yes	Yes			Q1 2021	Not initiated		Webinar on concept note & MERS. Countries to be specified. Elle to deliver, RB will convene. 1 1/2 hours interactive workshop/presentation
EHAGL	RB	CAPACITY BUILDING	Livelihoods strategy workshop (2)	Ellen Lee; Anna Gaunt					Q1 2021	Not initiated		
EHAGL	RB	PARTNERSHIPS & RESOURCES	SRI	Anna Gaunt; Cian O'Brien	Yes	Yes	N/A	Yes	30th November 2020			SRI workshop
EHAGL	RB	PARTNERSHIPS & RESOURCES	Global Refugee Forum (GRF)	Anna Gaunt; Cian O'Brien	Yes	Yes	Yes	Yes	31st Dec 2023	Ongoing		RB is putting together follow-up sheets per country/partner, early 2021 will review
EHAGL	RB	CAPACITY BUILDING	SRI webinar	Cian O'Brien	Yes			Yes	25th Sep 2020	Yes		Self-reliance initiative (SRI) webinar
EHAGL	RB	CAPACITY BUILDING	PAC Webinar	Cian O'Brien	Yes			Yes		Yes		Poverty Alleviation Coalition webinars
EHAGL	RB, Burundi, Ethiopia, Kenya, Rwanda, Somalia, South Sudan, Sudan, Uganda	PARTNERSHIPS & RESOURCES										
EHAGL			PAC regional briefing note	Cian O'Brien	Yes	Yes		Yes		Ongoing		Supporting PAC
EHAGL	Djibouti	STRATEGY	Strategic review/draft/evaluation	Anna Gaunt; Cian O'Brien	Yes	Yes			31st Mar 2021	Not initiated		As for the LH strategy – the operation has a 4 year strategy in place that was drafted in 2018, prior to the evaluation. In line with the recommendations of the evaluation, we would recommend a revision of the strategy, once the P3 LH officer joins the team early next year.
EHAGL	Kenya	STRATEGY	Strategic review/draft/evaluation	Anna Gaunt; HQ focal point	Yes	Yes	Yes	Yes	Q1 2021	Ongoing		Design + review. Strategy contextualization for covid19. The Kenya operation has currently a draft strategy in place that is with senior management for validation (joint exercise with Laura B. input from RB in 2019). The operation is now planning contextualized strategies for three locations responding to the Covid situation, for which they would welcome RB/DRS technical support/review. A small workshop for the operation on how to draft a strategy might be appreciated, and a LH refresher training – but this is something we will discuss further in the next country call.
EHAGL	Kenya	CAPACITY BUILDING	Part of the RB capacity building	Ellen Lee	Yes	Yes			Q1 2021	Not initiated		I had previously a discussion with Ama about providing a training on livelihoods to the team but due to C19 we couldn't. Maybe we can do something now virtually.
EHAGL	Somalia	ASSESSMENT	Socio-economic impact assessment (SEA)	PARK		Yes	PARK to discuss w CO		Q4 2021	Not initiated		Request that Socio-economic assessment (SEA) conducted jointly with the World Bank and the Somalia government's National Statistics Institute
EHAGL	Somalia	STRATEGY	Strategic review/draft/evaluation	Anna Gaunt; HQ focal point	Yes	Yes	Yes	Yes	Q1 2021	Ongoing		drafting the next Livelihoods strategy for the period 2021 – 2024.
EHAGL	Somalia	ASSESSMENT	Labour market assessment (LMA)	Anna Gaunt; ILO	Yes	Yes	ILO	Yes	Q2 2021	Ongoing		ILO has already initiated in 2019 and will share results w UNHCR to inform programming
EHAGL	Sudan	STRATEGY	Strategic review/draft/evaluation	Anna Gaunt	Yes	Yes	Yes	Yes	Q2 2021	Not initiated		SDO will write partnership strategy including livelihoods chapter
EHAGL	Rwanda	STRATEGY	Strategic review/draft/evaluation	Anna Gaunt; maybe HQ focal point for formatting			Yes			Not initiated		Strategy drafting (light technical review)
EHAGL	Tanzania, Burundi	ASSESSMENT	Socio-economic impact assessment (SEA)	PARK						Awaiting input from COs		
EHAGL	Tanzania, Burundi	ASSESSMENT	Labour market assessment (LMA)	ILO?		No				Awaiting input from COs		Market systems analysis
EHAGL	Tanzania, Burundi	STRATEGY	Strategic review/draft/evaluation	Anna Gaunt	Yes	Yes				Awaiting input from COs		Strategic and technical review mission
EHAGL	Uganda	ASSESSMENT	Socio-economic impact assessment (SEA)	PARK						Not initiated		we would like to confirm that the Uganda operation will need support from DRS to conduct a socio-economic assessment.
EHAGL	South Sudan	TBC	TBC							Awaiting input from COs		Nothing requested, review strategy in light of covid once a LH officer is in place
EHAGL	Ethiopia	STRATEGY	Regional sub strategies to be drafted							Awaiting input from COs		Nothing requested, but anticipating sub strategies for different regions
	CAPACITY BUILDING											

Minimum Economic Recovery Standards



Global Livelihoods Information System

