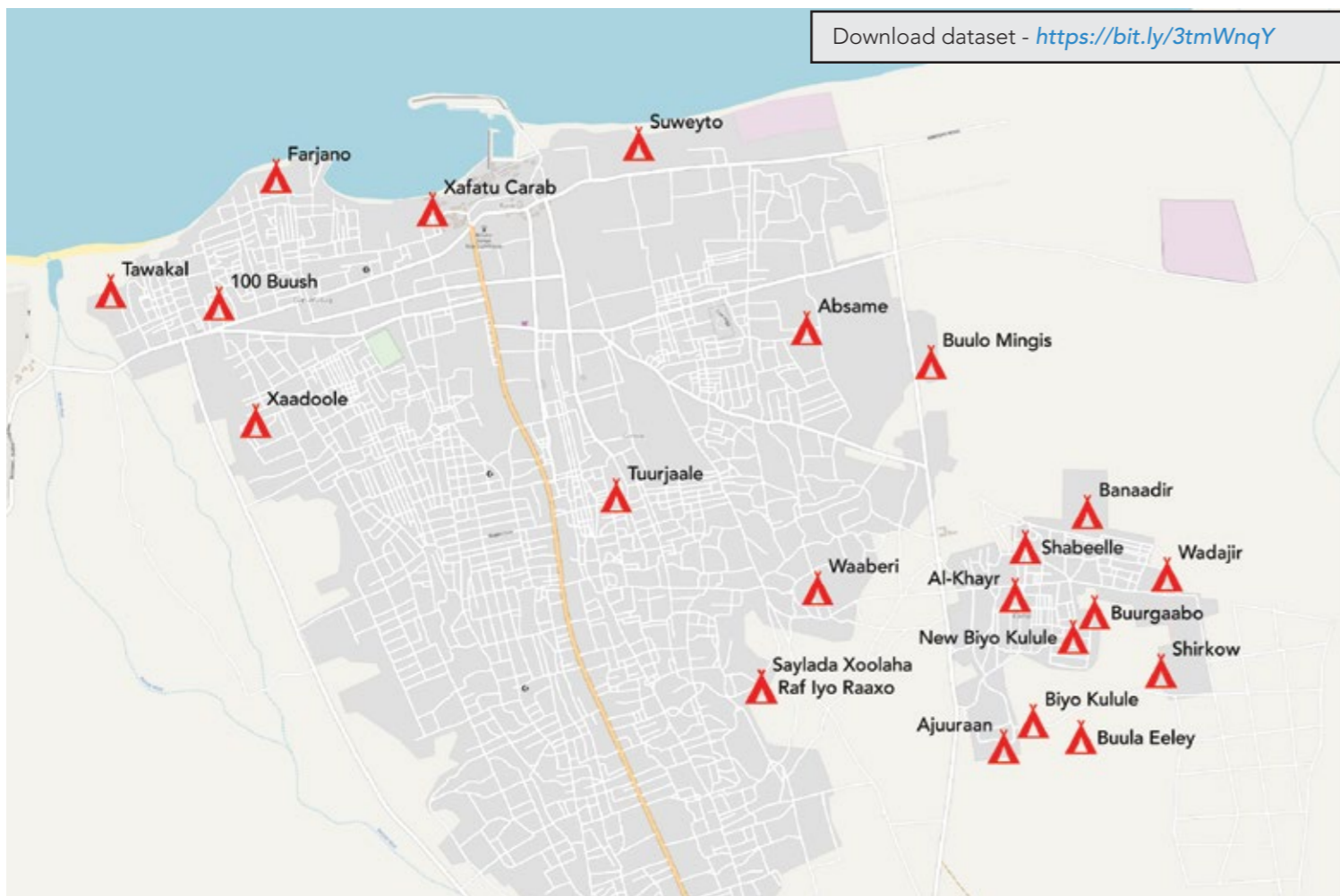


Download dataset - <https://bit.ly/3tmWnqY>

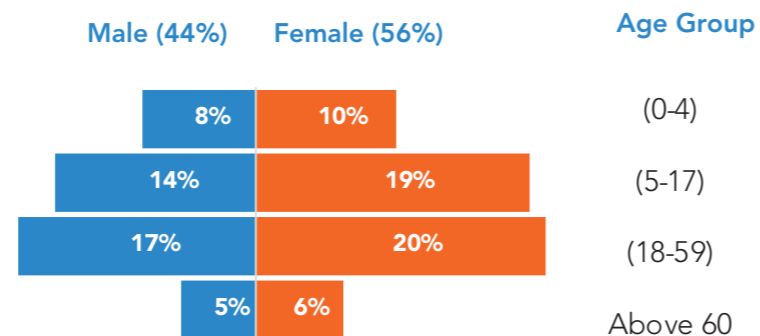
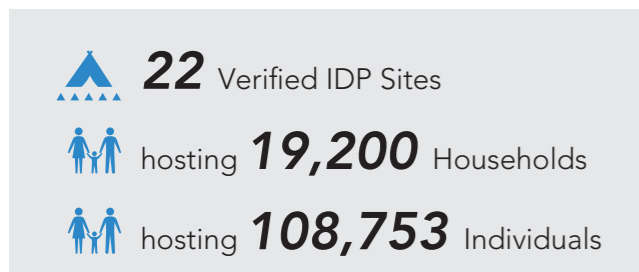


Map of verified IDP sites in Bossaso - January 2021

Assessment overview

A joint IDP site verification exercise was conducted in Bossaso in January 2021. The operation was led by DRC, KAALO, Local Government, NRC, PSA and UNHCR. 22 IDP sites were identified hosting 19,200 households or 108,753 individuals. Compared to the last site verification conducted in September 2019, there was a decrease of 19 IDP sites and 3,148 Households or 23,394 individuals.

Demographic data of IDPs living in Bossaso



People living with disability

Using the Washington Group disability questions, statistics of people living with disabilities were derived

9,394 (9%)
people living with disability

- 3,413 (59% Female)** have difficulty with seeing (even wearing glasses)
- 1,011 (50% Female)** have difficulty with hearing (even using a hearing aid)
- 674 (54% Female)** have difficulty with communicating and/or understanding
- 1,948 (53% Female)** have difficulty with walking and/or climbing stairs
- 1,535 (80% Female)** have difficulty with dressing and/or washing
- 813 (56% Female)** have difficulty with remembering/concentrating

Eviction Risk Mapping

IDP sites were assessed based on their risk of eviction. Several factors were put into consideration such as IDP site tenure, type of agreements in place and whether an eviction notice has been issued recently.

45% of IDP sites have been classified as having extreme (32%) and high (14%) risk of eviction

- 64%** of sites, IDPs pay rent in form of cash
- 73%** of sites have no agreement in place
- 100%** of those that have agreements have written agreements
- 100%** of those that have agreements have agreed end dates
- 41%** of sites have been issued with eviction notice within the last 3 months

Flood Risk Mapping

IDP sites were assessed based on their risk of flooding.

12 IDP sites (55%) have been classified as extreme (always floods) and high (floods frequently)

