



# Performance Snapshot

Quarter 1

## Uganda Refugee Response Plan (RRP) 2020-2021

January - March 2021



**124,106**  
Refugees & Asylum Seekers  
**30,350 HHs**

### Palorinya Refugee Settlement Moyo/Obongi Sub-Office



**23**  
Partners

Sector	Actual status per key indicator	Target/Standard (2021)	Actual <span style="color: blue;">█</span> against annual target <span style="color: yellow;">█</span> or standard <span style="color: grey;">█</span>
Education	66% children of school going age enrolled in primary school <i>(Term I 2020)</i>	100%	66% <span style="color: yellow;">█</span> 34%
	The pupil teacher ratio for primary schools was 1:103 <i>(Term I 2020)</i>	1:71	Actual <span style="color: blue;">█</span> Target <span style="color: yellow;">█</span>
Environment & Energy	272 households accessed alternative and/or renewable energy <i>(Q1)</i>	15,000 (target) 1/HH (standard)	2% <span style="color: yellow;">█</span>
	0 hectares of forests, wetlands, riverbanks and lakeshores protected and restored <i>(Q1)</i>	600 ha	0% <span style="color: yellow;">█</span>
Food Security	116,929 refugees received monthly in-kind food assistance <i>(In Q1)</i>	124,106 Individuals	94% <span style="color: blue;">█</span>
	34.5% of HH with borderline Food Consumption Score <i>(In Q1)</i>	18% (2020 target) <20% (standard)	Actual <span style="color: blue;">█</span> Target/standard <span style="color: yellow;">█</span>
Health & Nutrition	The Severe Acute Malnutrition recovery rate was 83% <i>(In Q1)</i>	75% (target) > 75% (standard)	Actual <span style="color: blue;">█</span> Target/standard <span style="color: yellow;">█</span>
	The under-five mortality rate was 0.13 per 1,000 children <i>(In Q1)</i>	0.1 (target) < 1.5 (standard)	Actual   0.13 <span style="color: blue;">█</span> Target/standard <span style="color: yellow;">█</span>
Livelihoods & Resilience	200 refugee households received emergency livelihood support <i>(Q1)</i>	13,038 HHs	2% <span style="color: yellow;">█</span>
	0 refugees received financial literacy training <i>(Q1)</i>	2,000 Individuals	0% <span style="color: yellow;">█</span>
Child Protection	652 children received individual case management services <i>(Q1)</i>	3,294 Individuals	20% <span style="color: blue;">█</span>
	66 GBV survivors received appropriate multi-sectoral support <i>(Q1)</i>	300 Individuals	22% <span style="color: blue;">█</span>
Protection	486 refugees received psychosocial support <i>(Q1)</i>	25,000 Individuals	2% <span style="color: yellow;">█</span>
	310 refugees received legal assistance and legal aid services <i>(Q1)</i>	18,000 Individuals	2% <span style="color: yellow;">█</span>
Shelter, Settlement & NFI	0 refugee households with specific needs assisted with semi-permanent shelter <i>(Q1)</i>	880 HHs	0% <span style="color: yellow;">█</span>
	0 kms of roads rehabilitated (including roadside vegetation) for all-year access to community services <i>(Q1)</i>	15 Kms	0% <span style="color: yellow;">█</span>
Water, Sanitation & Hygiene	Refugees received 22.8 litres per person per day <i>(In Q1)</i>	20 liters (target) 20 liters (standard)	Actual 22.8 <span style="color: blue;">█</span> Target/standard <span style="color: yellow;">█</span>
	75% of Refugees households had access to latrine <i>(In Q1)</i>	85% (target) ≥ 85% (standard)	75% <span style="color: blue;">█</span> 85%
Cash-Based Interventions	272 households received any form of cash and voucher assistance <i>(including CBI for WASH, L&amp;R and EE) (Q1)</i>	10,400 HHs	3% <span style="color: blue;">█</span>
	985 PSN households received cash and voucher assistance for basic needs <i>(multipurpose cash) (Q1)</i>	2,000 HHs	49% <span style="color: blue;">█</span>



# Operational Presence

Quarter 1

## Palorinya Refugee Settlement

January - March 2021

**02**  
National partners

**13**  
International NGOs

**06**  
UN Agencies

**02**  
Government Partners



Partner/Sector	Education	E&E	Food Security	Health & Nutrition	Livelihood	Protection	CP	GBV	SSNFI	WASH	CBI
AFOD			IP								
AIRD									IP		
CEFORD					OP	OP					
CFI							OP				
DRC									OP		
FCA	OP						OP				
IDI				OP							
IsraAID							OP				
JAM					OP						
LWF		IP			OP	IP	IP	IP	IP	IP	OP
MTI				IP							
ODLG	G			G							
OPM						G	G	G	G		
SCI	OP				OP		IP	IP			IP
UNDP								A			A
UNFPA				A							
UNHCR	A	A		A		A	A	A	A	A	
UNICEF				A			A				
URCS									OP	OP	
VFI					OP						
WFP			A	A							
WHO				A							
WIU	IP										
<b>Total #</b>	<b>05</b>	<b>02</b>	<b>02</b>	<b>08</b>	<b>05</b>	<b>05</b>	<b>07</b>	<b>05</b>	<b>06</b>	<b>03</b>	<b>03</b>

A = United Nations (UN) Agency

GP = Government Partner

IP = UN Implementing Partner

OP = Operational Partner

Alliance Forum for Development (AFOD)

IsraAID

United Nations Refugee Agency (UNHCR)

African Initiatives for Relief and Development

Joint Aid Management (JAM)

United Nations Children Emergency Fund (UNICEF)

(AIRD)

Lutheran World Federation (LWF)

Uganda Redcross Society (URCS)

Community Empowerment for Rural Development

Medical Teams International (MTI)

Vision Fund International (VFI)

(CEFORD)

Obongi District Local Government (ODLG)

World Food Programme (WFP)

ChildFund International (CFI)

Office of the Prime Minister (OPM)

World Health Organization (WHO)

Danish Refugee Council (DRC)

Save the Children International (SCI)

Windle International Uganda (WIU)

FinChurch Aid (FCA)

United Nations Development Programme (UNDP)

Infectious Disease Institute (IDI)

United Nations population Fund (UNFPA)



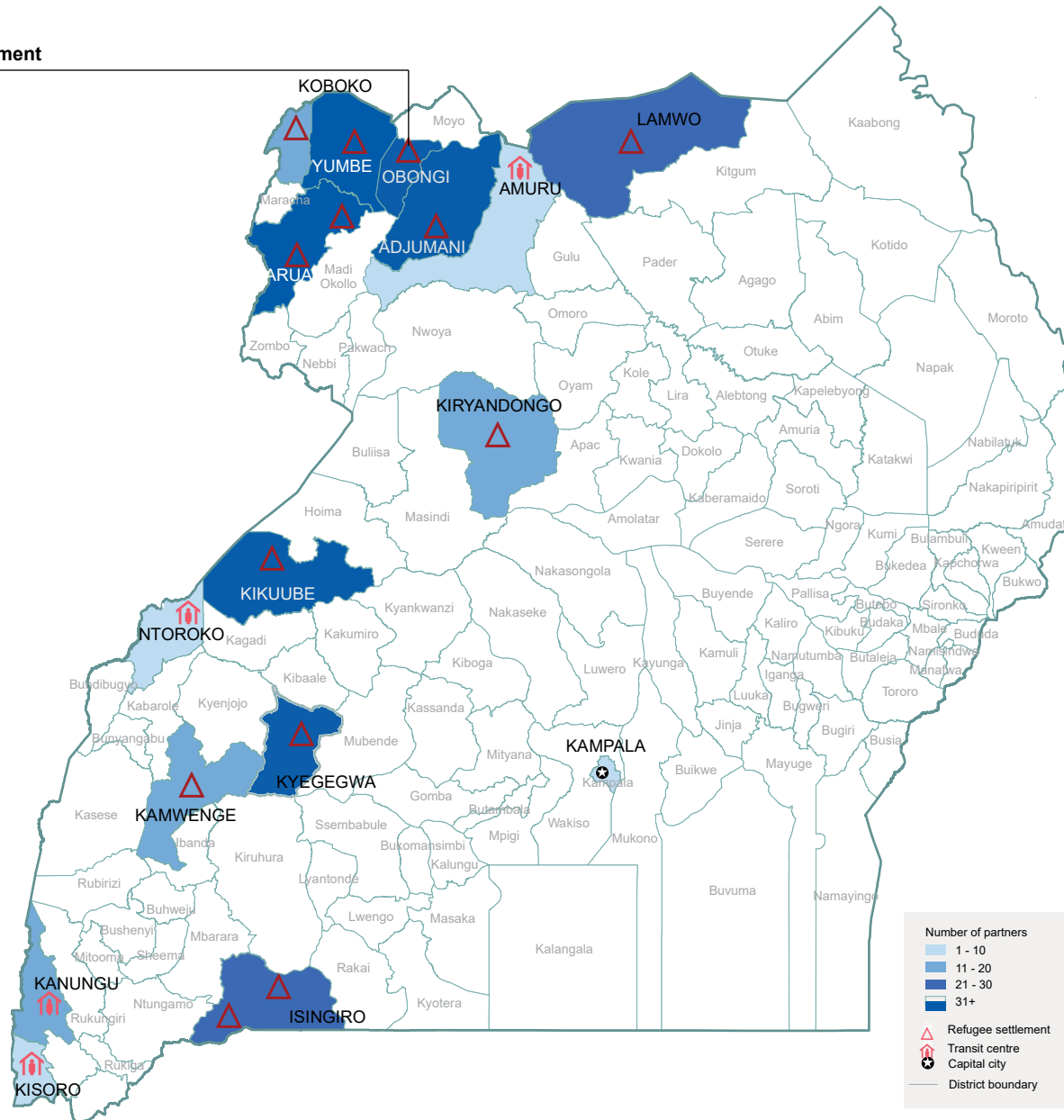
# Operational Presence

Quarter 1

## Map of Uganda Showing Location of Settlements and number of partners

January - March 2021

### Palorinya Refugee Settlement



The boundaries and names shown and the designations on this map do not imply official endorsement or acceptance by the United Nations