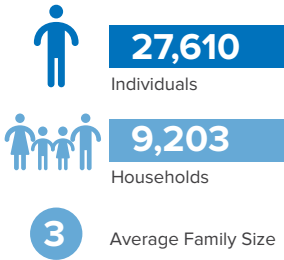


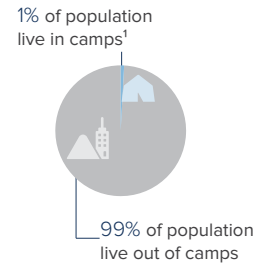
Central African Republic Refugees in Sudan

as of 30 November 2021

CAR Refugees and Asylum-seekers



Population Distribution



¹ Um Shalaya camp in Azum/ Central Darfur

Persons With Disabilities



1% of CAR registered population are persons with disabilities

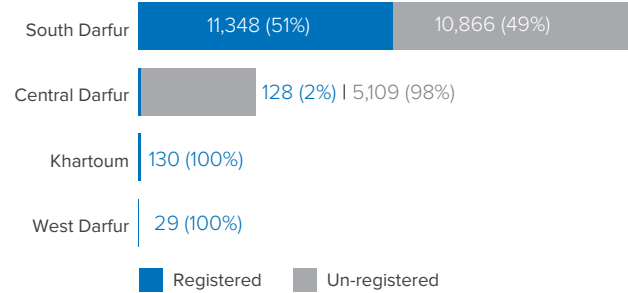
Unaccompanied and Separated Children



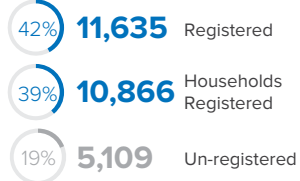
The spark of inter-communal violence in September 2019 have led refugees from Central African Republic (CAR) to flee to safety in Sudan.

With more than 10,000 refugees arriving in 2020 and the situation along the CAR-Sudan border remaining tense and volatile, UNHCR has revised its planning figure for arrivals from CAR to 10,000 individuals by end of 2021.

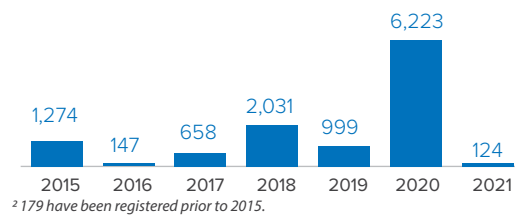
CAR Refugees and Asylum-seekers Per State



Registration Status

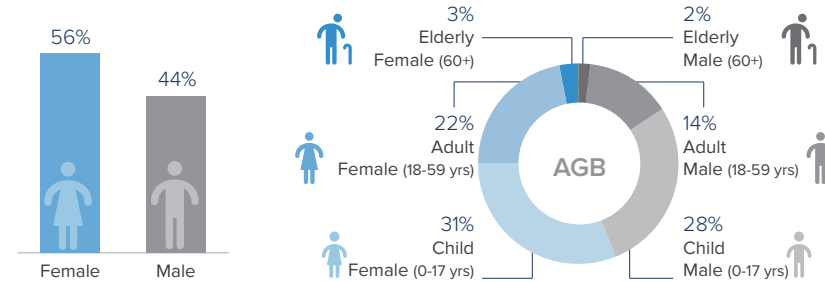


Registration Since 2015²



² 179 have been registered prior to 2015.

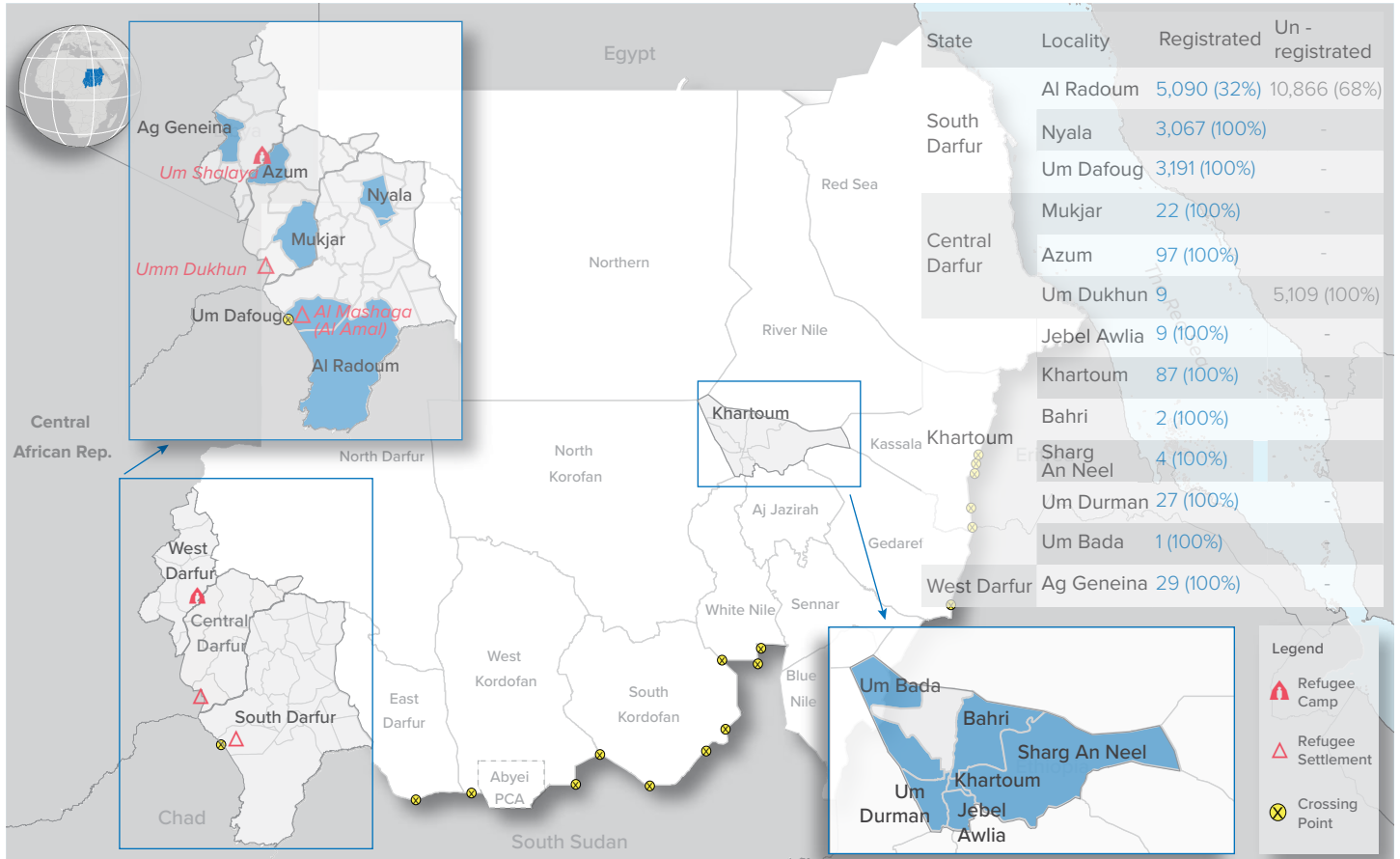
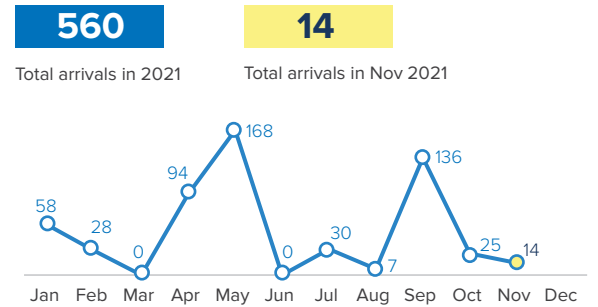
Age-gender Breakdown³



³ Population distribution statistics are based on registered individuals only.

Sources: UNHCR, Commission of Refugees (CoR)

New Arrivals | 2021



The boundaries and names shown and the designations used on this map do not imply official endorsement or acceptance by the United Nations. Abyei region: Final status of the Abyei area is not yet determined.

