



233,919
Refugees & Asylum Seekers
32,515 HHs

Adjumani District Refugee Settlements
Pakelle Sub-Office



31
Partners

Sector	Actual status per key indicator	Target/Standard (2021)	Actual against annual target or standard
Education	74% children of school going age enrolled in primary school (ERP Sep '21)	90%	74% (Actual) vs 90% (Target)
	The pupil teacher ratio for primary schools was 1:77 (ERP Sep '21)	1:59	Actual vs Target (1:59)
Environment & Energy	1,085 households provided access to energy-saving equipment (Q1-3)	10,200 (target) 1/HH (standard) (incl. host comm.)	11%
	129 ha of woodlots established and maintained (Q1-3)	1,000 ha (incl. host comm.)	13%
Food Security	223,785 refugees received monthly cash for food and in-kind assistance (68% Cash + 27% food) (In Q3)	230,101 registered refugees	Cash-based vs in-kind
	35.5% of HH with borderline Food Consumption Score (IQ2 data)	18% (original 2020 target) 20% (standard)	Actual vs Target/standard
Health & Nutrition	The severe Acute Malnutrition recovery rate was 97.9% (In Q3)	75% (target) > 75% (standard)	Actual vs Target/standard
	The under-five mortality rate was 0.08 per 1,000 children (In Q3)	0.1 (target) < 1.5 (standard)	Actual vs Target/standard
Livelihoods & Resilience	900 Refugee households received emergency livelihood support (including host community) (Q3)	7,038 HHs	13%
	2,152 refugees received financial literacy training	2,000 Individuals	>100%
Child Protection	2,367 children received individual case management services	6,289 Individuals	38%
	129 GBV survivors received appropriate multi-sectoral support (Q3)	200 Individuals	64%
Protection	3,348 refugees received psychosocial support (Q3)	35,000 Individuals	13%
	2,227 refugees received legal assistance and legal aid services (Q3)	57,600 Individuals	4%
Shelter, Settlement & NFI	0 refugee households with specific needs assisted with semi-permanent shelters (NTR for Q3)	4,000 HHs	0%
	4 KM of roads rehabilitated (including roadside vegetation) for all-year access to community services (NTR for Q3)	50 Kms	8%
Water, Sanitation & Hygiene	Refugees received 17.5 litres of water per person per day (in Q3)	20 liters (target) 20 liters (standard)	Actual vs Target/standard
	78% household latrine coverage (In Q2)	85% (target) ≥ 85% (standard)	78% (Actual) vs 85% (Target)
Cash-Based Interventions	32,743 households received any form of cash and voucher assistance (including CBI for WASH, E&E and L&R) (Q3)	30,000 HHs	>100%
	2,000 households received cash and voucher assistance for basic needs (multipurpose cash) (Q3)	10,000 HHs	20%



05
National partners



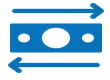
16
International NGOs



07
UN Agencies



03
Government partners



Partner/Sector	Education	E&E	Food Security	Health & Nutrition	Livelihood	Protection	CP	GBV	SSNFI	WASH	CBI
ADLG	G			G						G	
AFOD			IP								
AIRD									IP		
CARE						OP					
DRC		OP			OP				OP		
FAO					A						
FCA	OP										
FH					OP						
FRC	OP				OP						
HelpAge											
JEEP		OP									
JRS	OP				OP						
LWF		IP			OP	IP	IP	IP		IP	IP
MoWE										G	
MTI				IP							
OPM						G	G	G	G		
Plan	OP						OP				
SCI		OP									
SHA					OP						
TPO				IP							
TTR											
UNDP											A
UNFPFA				A							
UNHCR	A	A		A	A	A	A	A	A	A	A
UNICEF				A			A	A		A	
URCS							OP				
VFI											OP
WFP			A	A							
WHO				A							
WIU	IP										
WVI					OP		OP	IP			IP

A = United Nations (UN) Agency

GP = Government Partner

IP = UN Implementing Partner

OP = Operational Partner

Adjumani District Local Government (ADLG)

Jesuit Refugee Council (JRS)

United Nations Refugee Agency (UNHCR)

Alliance Forum for Development (AFOD)

Lutheran World Federation (LWF)

United Nations Children Emergency Fund (UNICEF)

African Initiatives for Relief and Development (AIRD)

Ministry of Water and Environment (MoWE)

VisionFund International (VFI)

Cooperative for Assistance and Relief

Office of the Prime Minister (OPM)

World Food Programme (WFP)

Everywhere (CARE)

Plan International (Plan)

World Health Organization (WHO)

Danish Refugee Council (DRC)

Self Help Africa (SHA)

Windle International Uganda (WIU)

The Food and Agricultural Organization (FAO)

Transcultural Psychosocial Organization

World Vision International (WVI)

FinChurch Aid (FCA)

(TPO)

Food for the Hungry (FH)

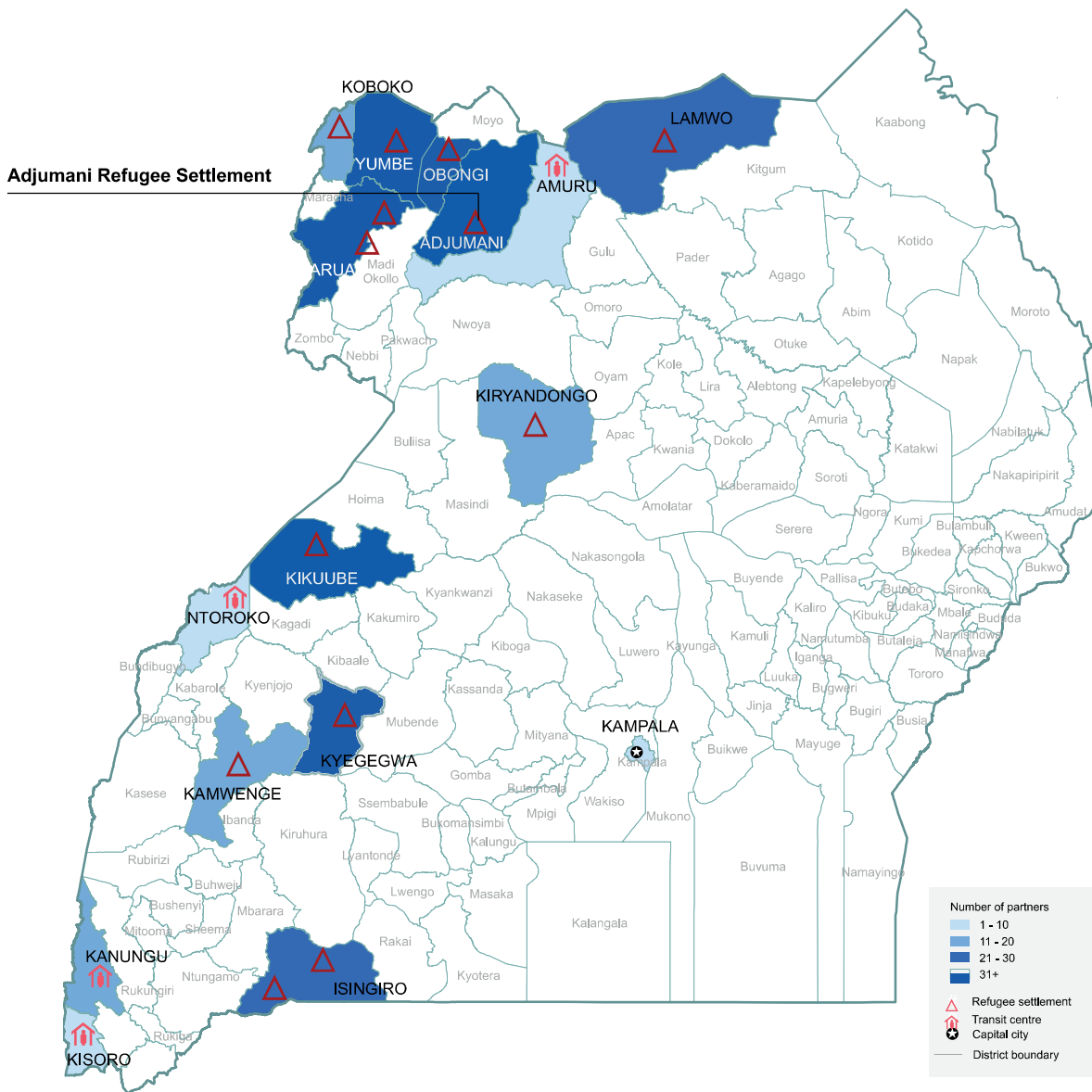
United Nations Development Programme

Finnish Refugee Council (FRC)

(UNDP)

Joint Energy and Environment Project (JEEP)

United Nations Population Fund (UNFPFA)



The boundaries and names shown and the designations on this map do not imply official endorsement or acceptance by the United Nations