

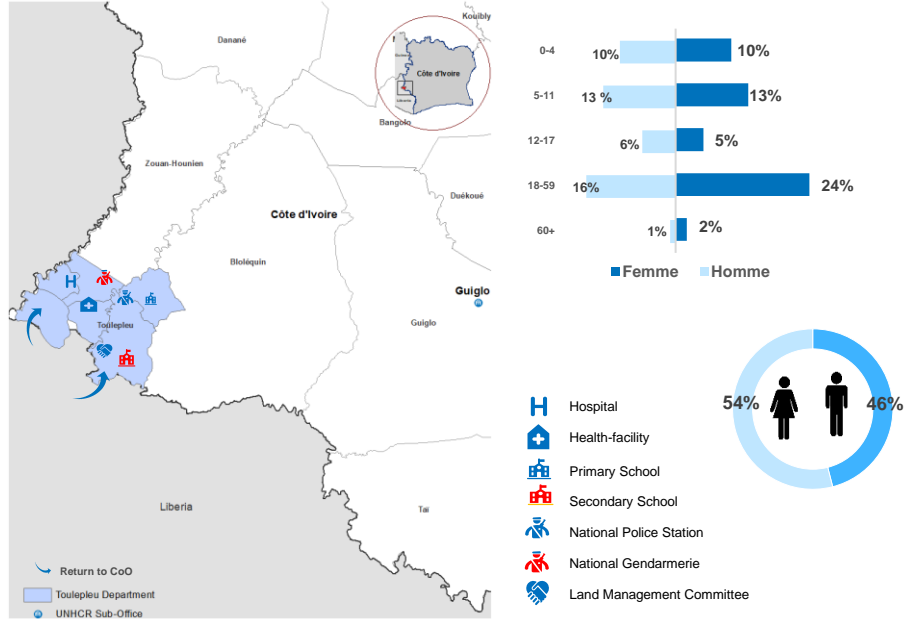
RETURNEES IN 2021 IN THE DEPARTMENT

4,129
Persons returned to the department in 2021

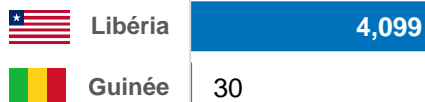
1,164
Households

1,648
Children

MAPPING AND DEMOGRAPHIC PROFILE, ACCESS TO BASIC SOCIAL SERVICES IN TOULEPLEU(2021)



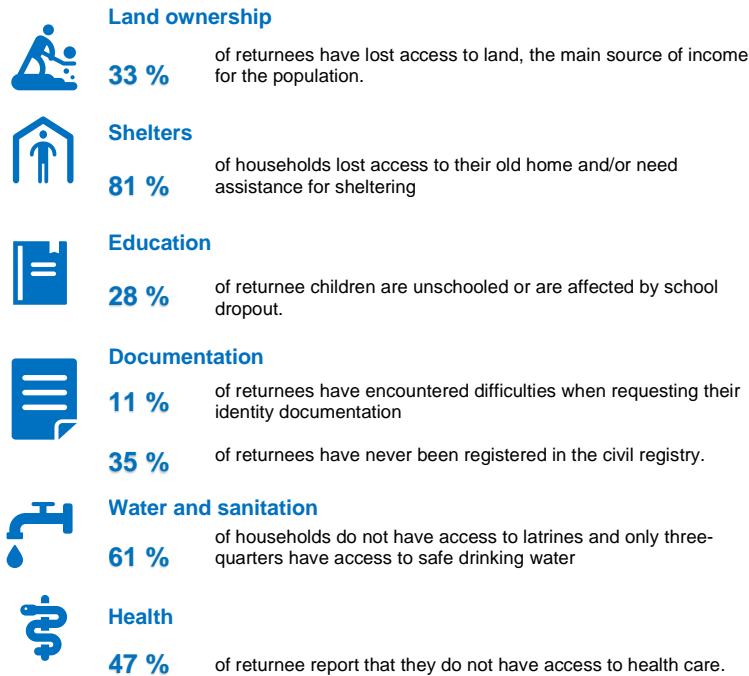
MAIN COUNTRIES OF ASYLUM OF RETURNEES IN 2021



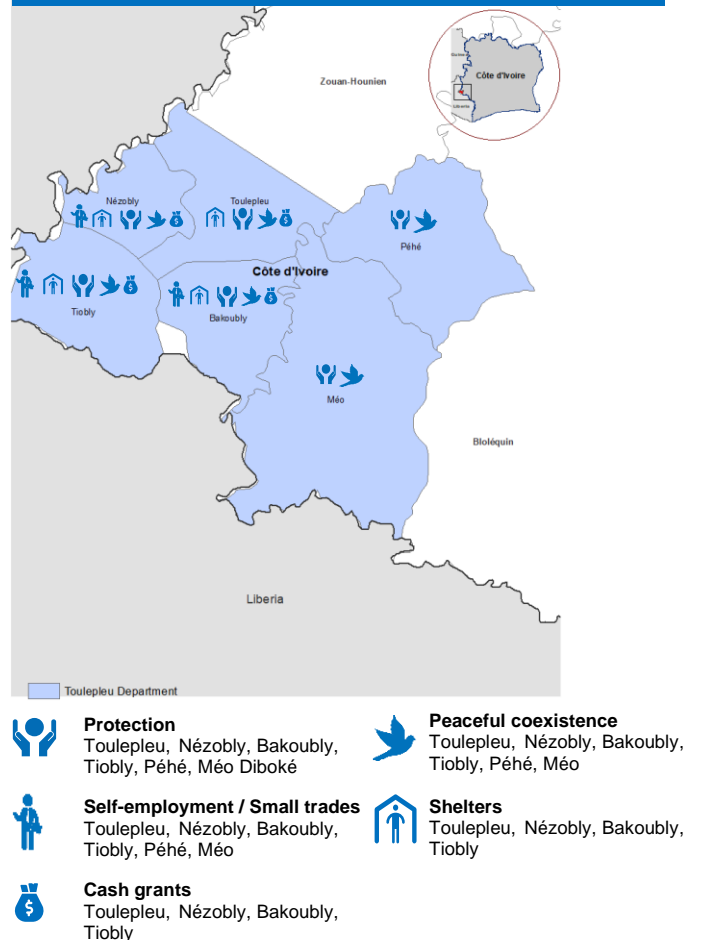
GENERAL SITUATION IN THE DEPARTMENT

The general situation in the department of Toulepleu is calm and peaceful in terms of security. It supported the holding of household surveys. No security incidents targeting one or more returnees since the resumption of repatriation in July 2021 have been reported in Toulepleu and surroundings. The returnees go about their business in peace.

PRIORITY NEEDS OF RETURNEES



MAIN REINTEGRATION ACTIVITIES IN TOULEPLEU DEPARTMENT



MAIN PARTNERS



MAIN FUNDERS

Belgium | Canada | Denmark | France | Germany | Italy | Japan | Netherlands | Private donors Australia | Private donors Republic of Korea | Private donors Sweden | Private donors Republic of Korea | Switzerland | United States of America