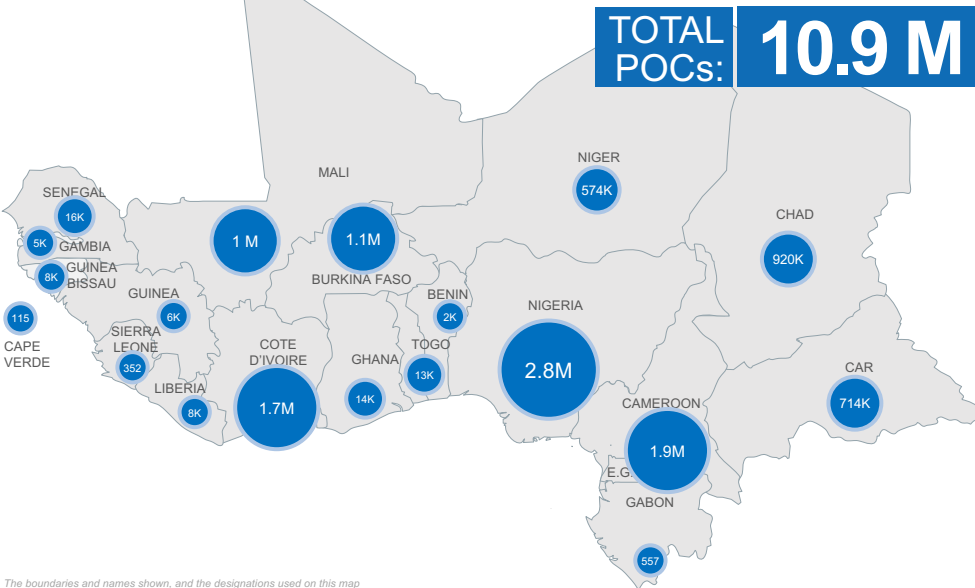
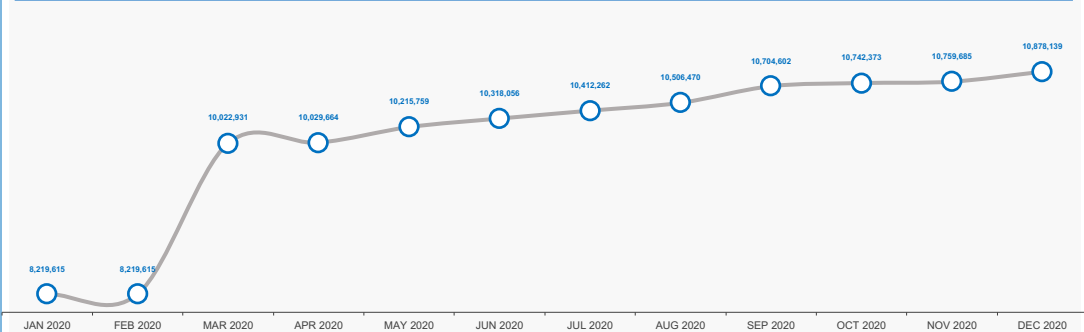


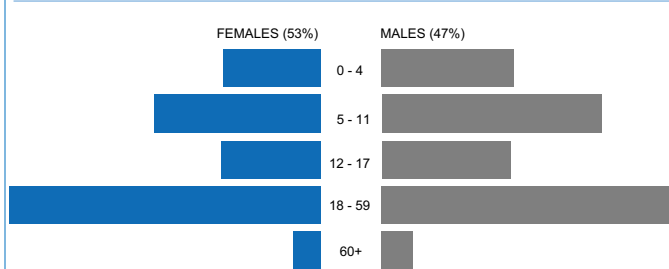
PERSONS OF CONCERN BY COUNTRY



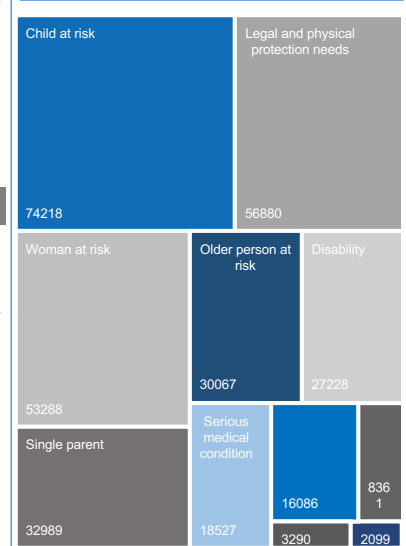
POPULATION TRENDS (PAST 12 MOIS)



AGE AND GENDER (REFUGEES AND ASYLUM SEEKERS)



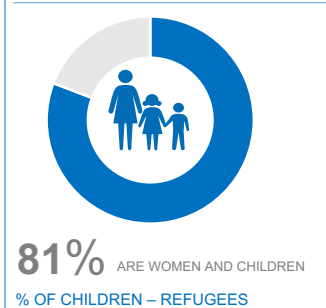
REF & ASY WITH SPECIFIC NEEDS



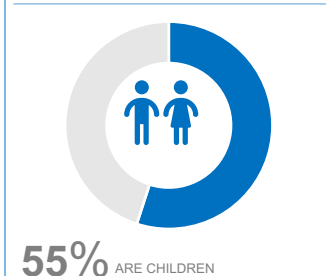
PERSONS OF CONCERN – BREAKDOWN BY COUNTRY AND POPULATION GROUP

	REFUGEES	ASYLUM SEEKERS	REFUGEE RETURNEES	IDP	IDP RETURNEES	STATELESS	OTHERS	TOTAL
BENIN	1,404	476						1,880
BURKINA FASO	20,250	34		1,074,993				1,095,277
CAMEROON	436,397	6,819		1,032,942	484,036			1,960,194
CAPE VERDE						115		115
CAR	9,087	288	17,671	630,824	55,834			713,704
CHAD	478,651	4,572		336,124			99,765	919,112
COTE D'IVOIRE	2,077	364	75,430			1,656,330		1,734,201
GABON	473	84						557
GAMBIA	4,399	212						4,611
GHANA	12,411	1,517						13,928
GUINEA	5,483	574						6,057
GUINEA BISSAU	7,801	37						7,838
LIBERIA	8,196	184						8,380
MALI	47,378	974	84,473	332,957	581,550			1,047,332
NIGER	233,131	3,349		298,458			38,131	573,069
NIGERIA	66,063	2,793		2,693,869				2,762,725
SENEGAL	14,347	1,929						16,276
SIERRA LEONE	352							352
TOGO	11,866	665						12,531
GRAND TOTAL	1,359,766	24,871	177,574	6,400,167	1,121,420	1,656,445	137,896	10,878,139

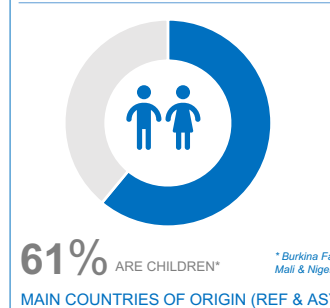
% OF WOMEN & CHILDREN - REFUGEES



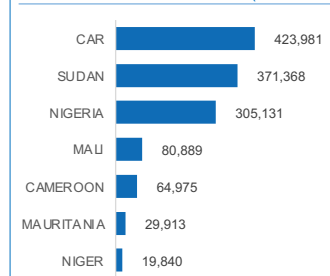
% OF CHILDREN – REFUGEES



% OF CHILDREN - IDPs



MAIN COUNTRIES OF ORIGIN (REF & ASY)



RURAL VS URBAN

