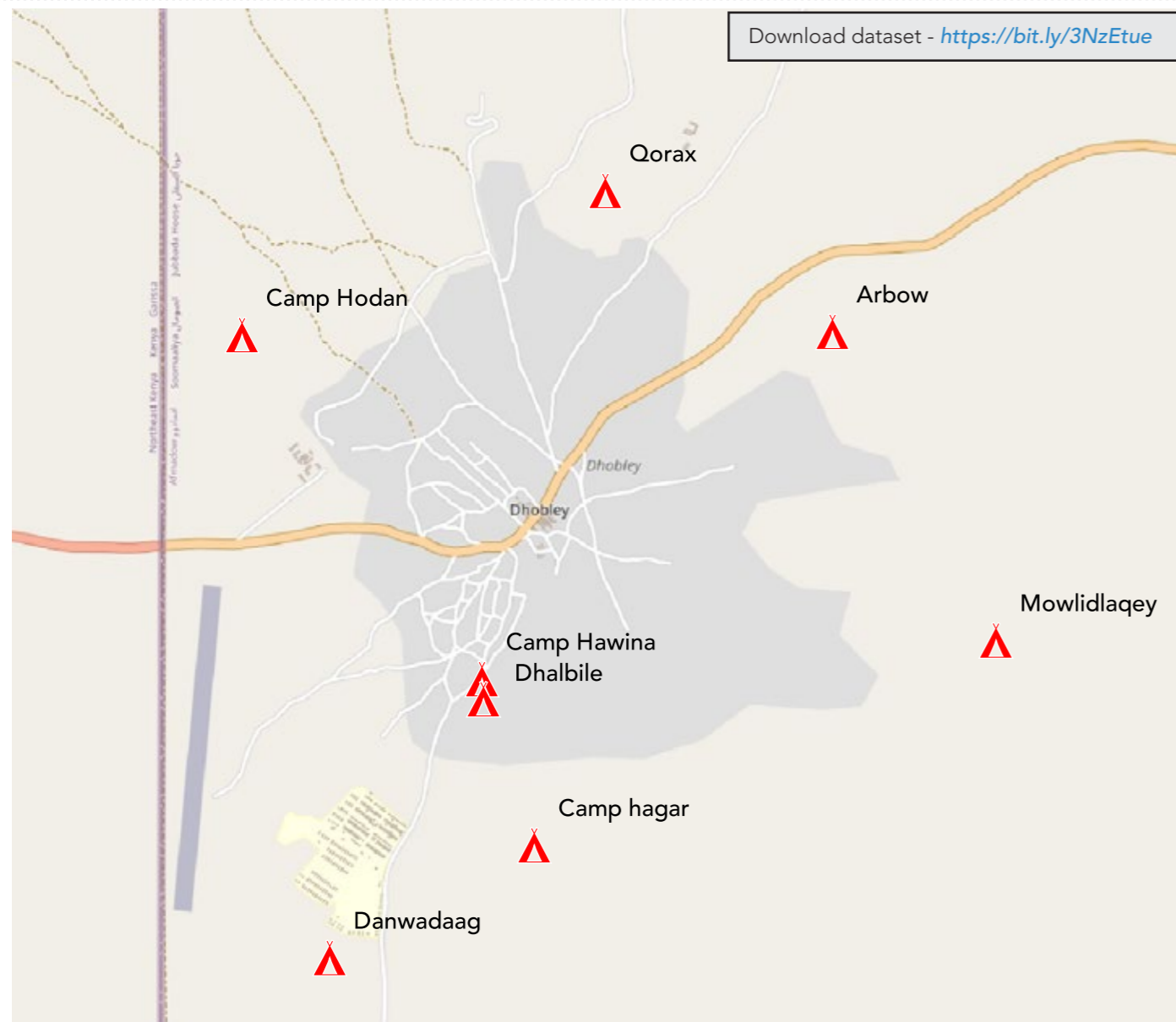


Download dataset - <https://bit.ly/3NzEtue>

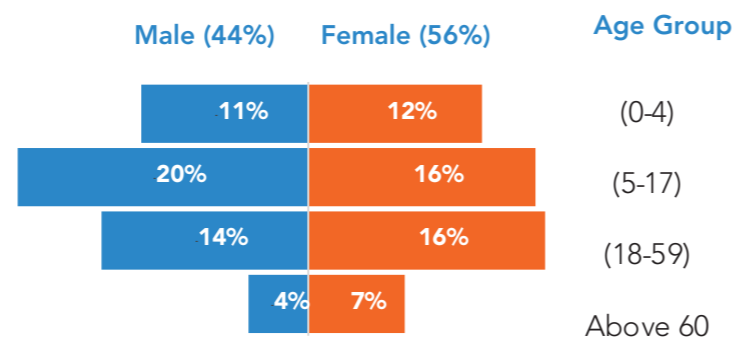
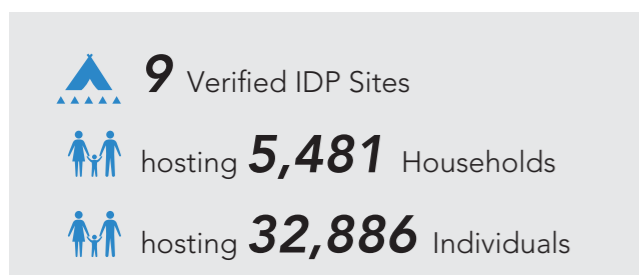


Map of verified IDP sites in Dhobley - May 2022

Assessment overview

IDP site verification exercise was conducted in Dhobley in May 2022 led by the Alight, AVORD, DRC, GRDO, IOM, IRDO, JUCRI, MercyCorps, SEDHURO, WADSA and WRRS. 9 IDP sites were identified hosting 5,481 households or 32,886 individuals. Compared to the last site verification conducted in November 2021, there was an increase of 5 IDP sites, 2,680 Households or 16,348 individuals.

Demographic data of IDPs living in Dhobley



People living with disability

Using the Washington Group disability questions, statistics of people living with disabilities were derived

1,258 (3.8%)
people living with disability

- 295 (51% Female)** have difficulty with seeing (even wearing glasses)
- 180 (52% Female)** have difficulty with hearing (even using a hearing aid)
- 141 (47% Female)** have difficulty with communicating and/or understanding
- 209 (53% Female)** have difficulty with walking and/or climbing stairs
- 243 (49% Female)** have difficulty with dressing and/or washing
- 190 (51% Female)** have difficulty with remembering/concentrating

Eviction Risk Mapping

IDP sites were assessed based on their risk of eviction. Several factors were put into consideration such as IDP site tenure, type of agreements in place and whether an eviction notice has been issued recently.

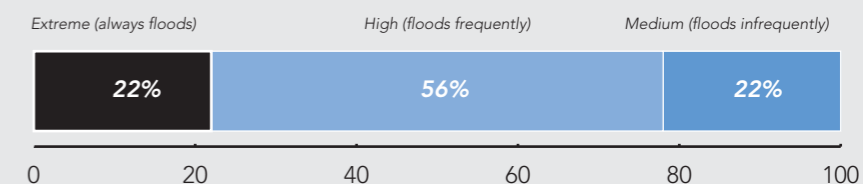
44% of IDP sites have been classified as having extreme (22%) and high (22%) risk of eviction

- 67%** of sites have land owner authorized occupancy type of land tenure
- 100%** of sites have no agreement in place
- 89%** of those that have agreements have oral agreements
- 89%** of those that have agreements have no agreed end dates
- 22%** of sites have been issued with eviction notice within the last 3 months

Flood Risk Mapping

IDP sites were assessed based on their risk of flooding.

7 IDP sites (78%) have been classified as extreme (always floods) and high (floods frequently)



For more information please contact the CCCM Cluster Coordination Team

Benjamin Conner
<bconner@iom.int>

James Macharia
<macharia@unhcr.org>