



### ENVIRONMENT OVERVIEW

#### OUTCOME 1: Refugees access an environment where natural resources are managed through sustainable settlement land use plans

##### Results Analysis

By mid-year, the National Forestry Authority (NFA), which is the lead agency raising seedlings for all UNHCR partners reported 2,289,515 assorted seedlings produced in 13 nurseries. This is 42 per cent of the 5,330,069 seedlings being raised in the nurseries. Of these, only 29 per cent of the 2 million teak root stumps and 440,000 eucalyptus clones to be supplied through direct procurement are included. The southwest reported the highest performance at 61 per cent of woodlot establishment targets achieved, followed by the Arua and Yumbe operations collectively, under Dan Church Aid at 41 per cent. The lowest was the Moyo operation under Lutheran World Federation (LWF), which reported only 31 per cent of the target achieved. NFA reported 28 per cent of central forest reserves restoration. The main reason provided for this low performance was the prolonged drought that affected the entire country. On forest and wetland protection, only NFA and Nsamizi had targets for 2022, with an achievement rate of between 83 and 100 per cent planned for the quarter by NFA, and 100 per cent for Nsamizi. Environmental awareness targets were generally on track with most operations reporting 100 per cent achievement of targets.

##### Challenges

The main challenge remained water shortage because of the prolonged dry spell affecting seedling production in the nurseries and stove construction. Partners also reported land conflicts between cattle keepers and cultivators, as well as continued encroachment on protected areas. Availability of land for planting also affected targets in the southwest. Another challenge was related to logistics (few vehicles and inadequate fuel especially for motorcycles).

##### Key Priorities

The Energy & Environment sector has fully adopted enhanced coordination with Shelter Settlement and Non Food Items (SSNFI), to benefit from the synergies identified during the Refugee Response Plan (RRP). Introduction of the Development Approach to environmental interventions where UNHCR works closely with the Government of Uganda (GoU) agencies, is considered key to its multi-year programming. Interagency collaboration is also a key priority, with Food and Agriculture Organisation (FAO) leading in this regard. FAO in collaboration with UNHCR and the Yumbe District Local Government (YDLG) are in the final stages of developing a Forest Management Plan for Bidibidi settlement. The DLG has expressed interest in extending the intervention to the entire district.

### KEY PERFORMANCE INDICATORS AND ACTIVITY OUTPUTS

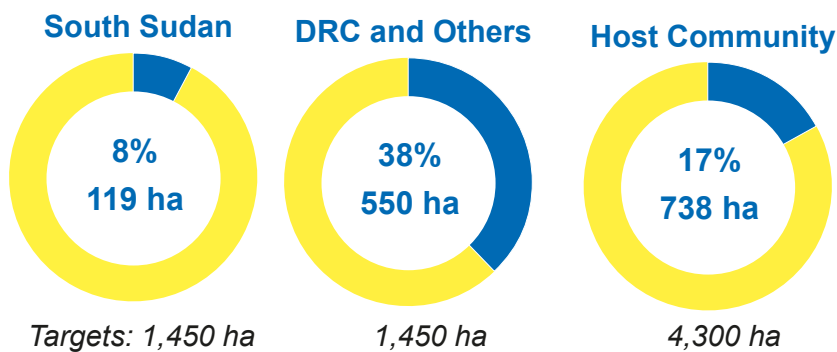
#### Output 1: Natural resources restored and managed sustainably

3 Commemorations: World Wetland Day, World Environment Day and World Refugee Day

24 Environment awareness sessions

5 Radio shows

#### Hectares woodlots established and maintained



**2,289,515** Seedlings distributed

**1,659** Refugees and hosts engaged through cash for work

**841** ha of Central Forest Reserves restored and protected

#### Multi-year Humanitarian-Development Projects & Relevant Strategies:

- WB/MWE/OPM Investing in Forests & Protected Areas for Climate-smart Development (IFPA-CD) Project (2021 – 2026)
- WB/OPM Development Response to Displacement Impact Project (DRDIP) – 2017 – 2021.
- EU/SCI Response to Increased Environmental Degradation and Promotion of Alternative Energy Sources in Refugee Hosting Districts (2021 – 2025).
- EU/Care International Strengthening Emergency Preparedness & Inclusive NR Mgt in Refugee Hosting Districts (2020 – 2023).
- SIDA//CoS/NRC/ACF/LWF Mutual Inter-related Resilience Programme (MIRP) – 2019 – 2023.
- FAO/SIDA Climate Resilient Livelihoods for Women Economic Empowerment in West Nile & Karamoja Regions of Uganda (2018 – 2023)
- DANIDA Northern Uganda Resilience Initiative (NURI) – 2018 – 2022



### ENERGY OVERVIEW

## OUTCOME 2: Refugees adopt and use affordable, reliable, sustainable and modern energy

### Results Analysis

Under the output “Persons of concern and host community have access to clean and sustainable energy for cooking and lighting,” generally good progress was reported for households provided with energy-saving cookstoves. DCA performed best with over 100 per cent achievement of targets reported and both LWF and Nsamizi reporting good progress, at 68 per cent and 66 per cent, respectively. Good progress was also reported on establishment of energy kiosk, where DCA, which had the only targets, reporting 100 per cent achievement. The performance of targets relating to other indicators including briquette production, heat-retaining baskets and construction of institutional stoves remained low, with 0 per cent achievement rate reported across the operation. Since awareness creation for the energy sector was combined with environment awareness, this indicator too recorded high achievement rates of nearly 100 per cent across the operation.

### Challenges

These include, limited number of vehicles compared to the increased implementation coverage. Partners also cited lower levels of adoption to usage of briquettes and improved stoves among refugees and host communities, because of cultural attachment to traditional technologies. Prolonged drought also affected stove production across the operation.

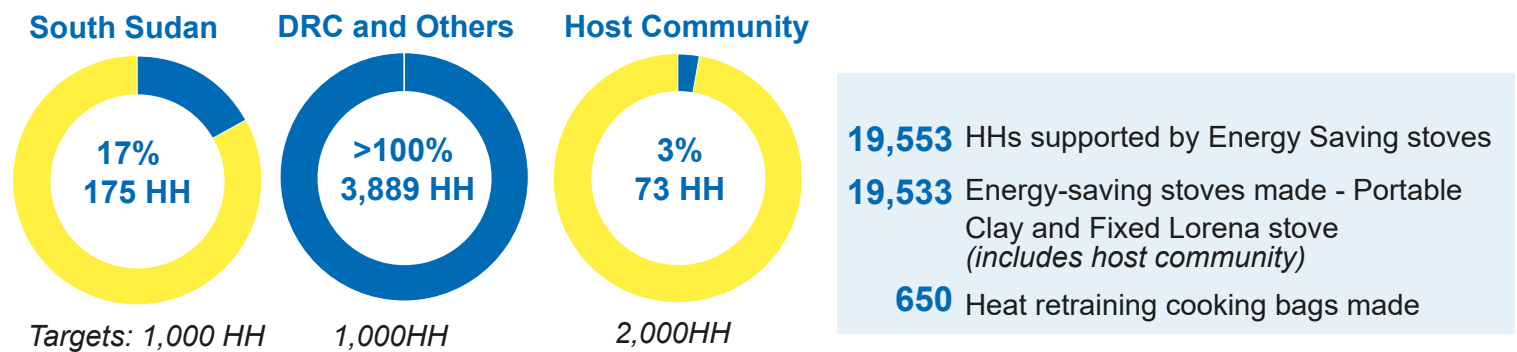
### Key Priorities

Solarisation of schools, provision of fuel for cooking to persons with specific needs, construction of improved cookstoves, mapping of E&E interventions, awareness creation, last-mile connectivity and solar mini-grids. Meeting the energy needs of new arrivals in the southwest also remains a priority.

## KEY PERFORMANCE INDICATORS AND ACTIVITY OUTPUTS

### Access to energy efficient technologies and fuels for cooking

#### Households using clean and alternative fuels for cooking



### Multi-year Humanitarian-Development Nexus Projects

- Energy Solutions for Displacement Settings Uganda Project (2019 – 2022).
- I4SD Solar Generation for Diesel Replacement Project in Rubondo, Nakivale Settlement.
- GIZ/REA EnDev/ESDS PRO Mini-Grids Program (2020 – 2022)
- Green Financing Facility – Sida/UNHCR (2020 – 2022).
- Green Box Project - UNHCR.
- KfW/REA GET Access Mini-grids Program (2021 – 2023)



### INSTITUTIONAL STRENGTHENING OVERVIEW

#### OUTCOME 3: Natural resource management and settlement planning integrated across all sectors



Cordination

- 1 Sustainable Energy Response Plan (SERP) for refugees and host communities was developed
- 6 WorkGrEEEn (E&E Working Group) monthly coordination meetings held at national level
- 6 ECCDPG (Environment & Climate Change Development Partners Group) monthly coordination meetings held.
- 6 Task Team Meetings held for the development of the Sustainable Energy Response Plan (SERP).



Water, Sanitation & Hygiene

**38%** Water pumped (**8,908,000 L/d**) through renewable energy (*as of June 2022*)

### Funding



**15**  
Partners



**\$28M**  
Total Required

**10.5M (38%)**

Funded

**\$17.5M**

Gap

### Partners

African Women and Youth Action for Development (AWYAD) | DanChurchAid (DCA) | Danish Refugee Council (DRC) | District Local Government (DLG) | Food and Agriculture Organization of the United Nations (FAO) | International Council for Research in Agroforestry Uganda (ICRAF) | Joint Energy and Environment Projects (JEEP) | Joint Effort to Save the Environment (JESE) | Lutheran World Federation (LWF) | Nsamizi Training Institute for Social Development (Nsamizi) | Oxford Committee for Famine Relief (Oxfam) | Raising Gabdho Foundation (RGF) | Save the Children International (SCI) | Welthungerhilfe (WHH) | World Vision International (WVI) | ZOA International (ZOA)

# Operational Presence

## Yumbe

DCA, ICRAF, SCI, WHH

## Koboko

DCA

## Madi Okollo & Terego

DCA, DRC, ICRAF, SCI, WVI, ZOA

## Kikuube

Nsamizi

## Kyegegwa

AWYAD, JESE, Nsamizi, Oxfam

## Kamwenge

LWF, Nsamizi

## Isingiro

JESE, Nsamizi

## Obongi

DRC

## Lamwo

DRC, FAO, LWF

## Adjumani

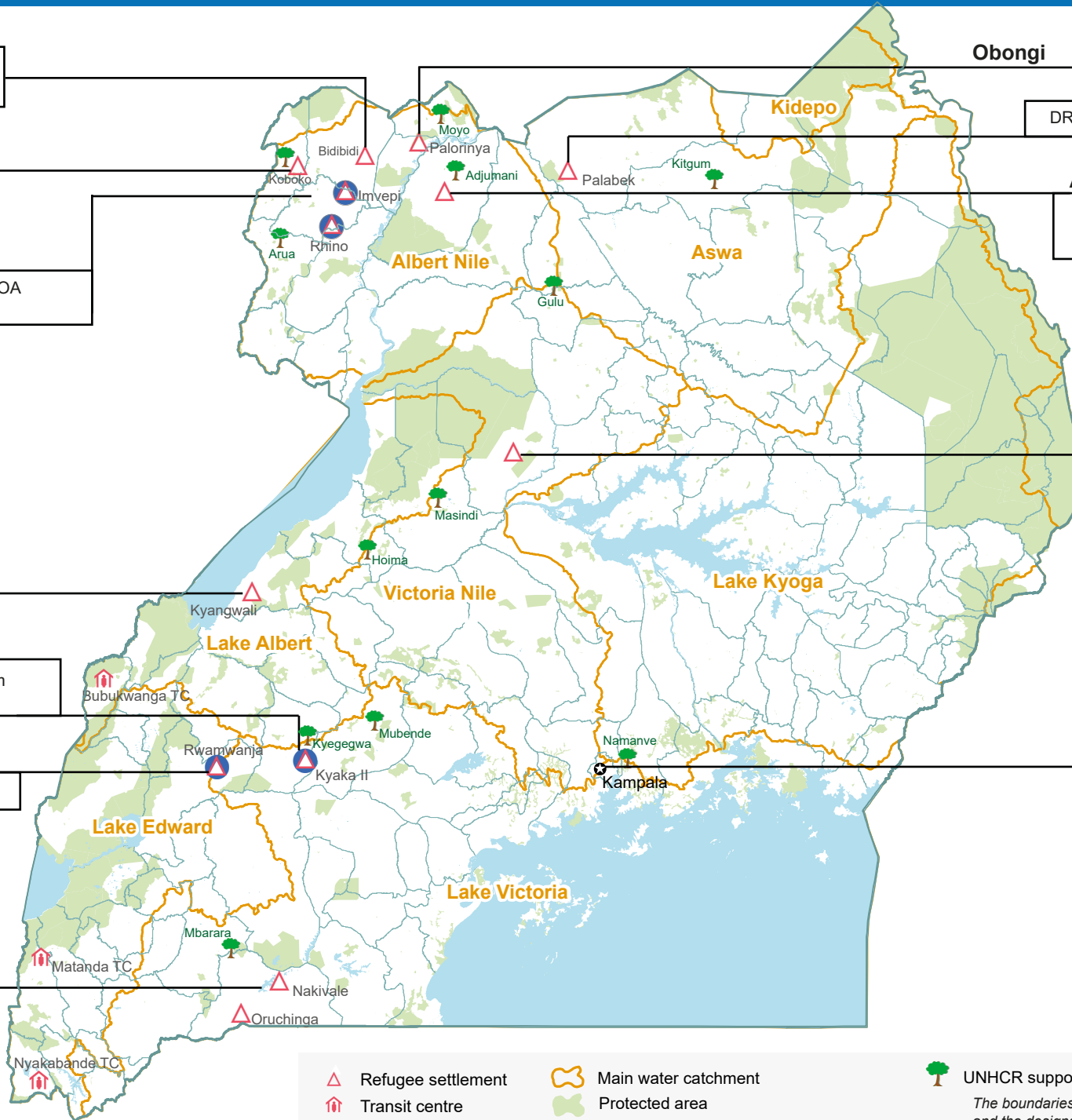
DRC, ICRAF, JEEP, LWF, WVI

## Kiryandongo

DCA, FAO, ICRAF, SCI

## Kampala

RGF



Refugee settlement	Main water catchment	UNHCR supported NFA nurseries
Transit centre	Protected area	<i>The boundaries and names shown and the designations on this map do not imply official endorsement or acceptance by the United Nations</i>
Capital city	Refugee settlement whose site plans are updated with protected areas and Woodlots	
District boundary		