

**Population**  
Refugees and asylum-seekers

Individuals: **237,787**  
Households: **32,580**

Settlement

Adjumani (all settlements)

Target year

2022

**UCRRP Partners 24**

GOV'T **02** UN UN Agencies **06**  
NGO NNGOs **04** NGO INGOs **12**

Sector	Indicator	Actual	Target
--------	-----------	--------	--------

**Education**



% children enrolled in Primary **58** / 90

Teacher Pupil ratio (1:65) **78** / 65  
National standard 1.53

**Health & Nutrition**



Under 5 mortality rate **0.10** / 0.00  
Standard: < 1.5

Severe acute malnutrition recovery rate **99** / 75  
Standard: > 75%

**WASH**



# of litres per person per day **16** / 18  
Standard: 20l/p/d

% household latrine coverage **79** / 75  
85% sanitation coverage

**Energy & Environment**



# of hectares woodlots/plantations maintained **750**

# of HH supported with clean and/or energy efficient technologies for cooking **1,000** / 7,000

**Food Security**



# of refugees and asylum seekers receiving food assistance disaggregated by modality (Cash + In-kind) **55,003** / 180,508 / 214,940

In-kind Cash Target

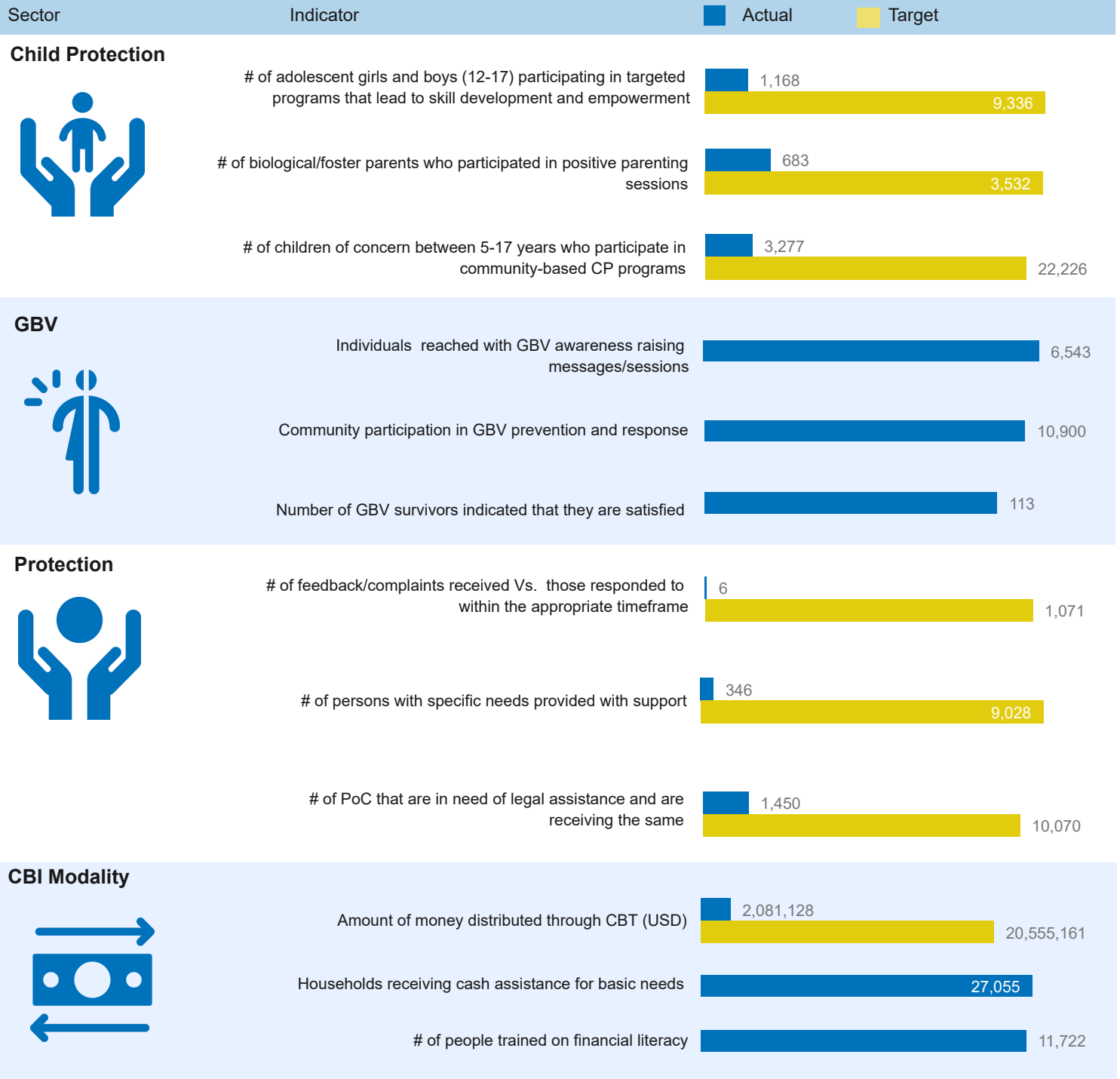
Quantity of food provided (Metric Tonnes) **1,763** / 8,697

**Livelihoods & Resilience**



% of PoCs with access to arable land **65** / 36

% HH with income from crop sales **18** / 12



### List of Partners who reported as of Q2 2022, UN Agencies and Government

#### National NGOs

JEEP, PALM Corps, SeedEffect and TPO

#### International NGOs

AyudaEA, CARE, DRC, FRC, GAU, JRS, LWF, MTI, SHA, TTR, WCC and WVI

#### UN Agencies

UNDP, UNFPA, UNHCR, UNICEF, UNWOMEN and WFP

#### Government

OPM, Adjumani DLG