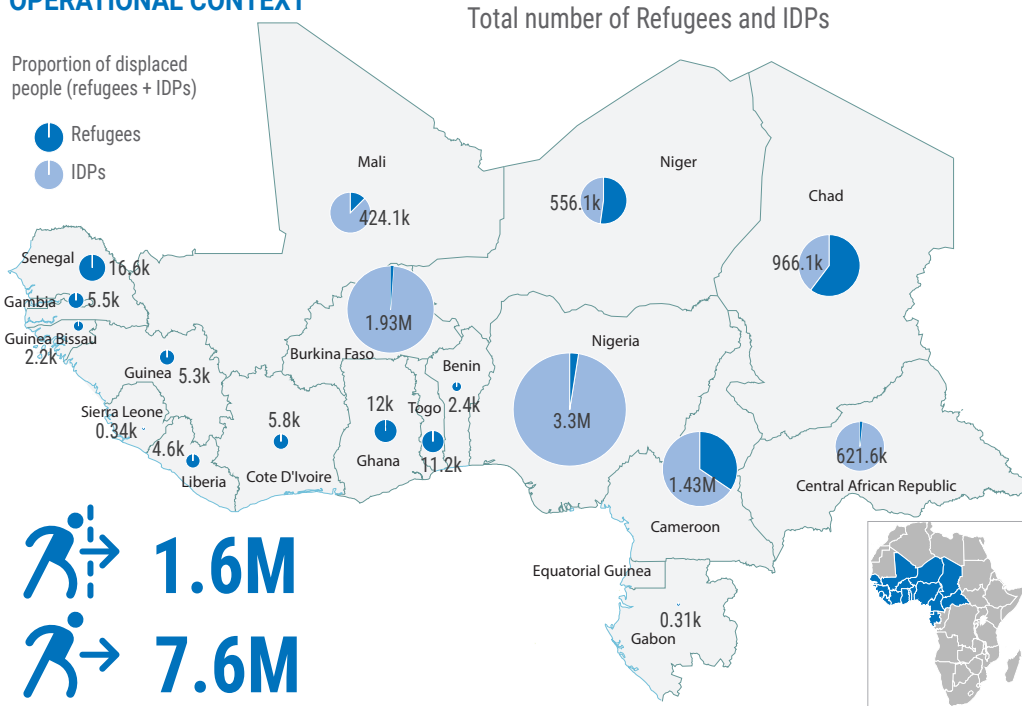


OPERATIONAL CONTEXT

Proportion of displaced people (refugees + IDPs)

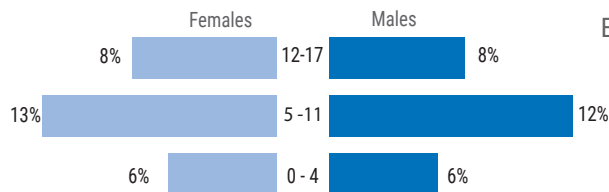
- Refugees
- IDPs



1.6M
7.6M

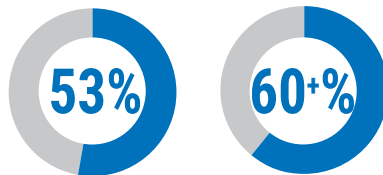
KEY FIGURES

Age and Gender (Refugees)



5.5M

Estimated displaced children in the region



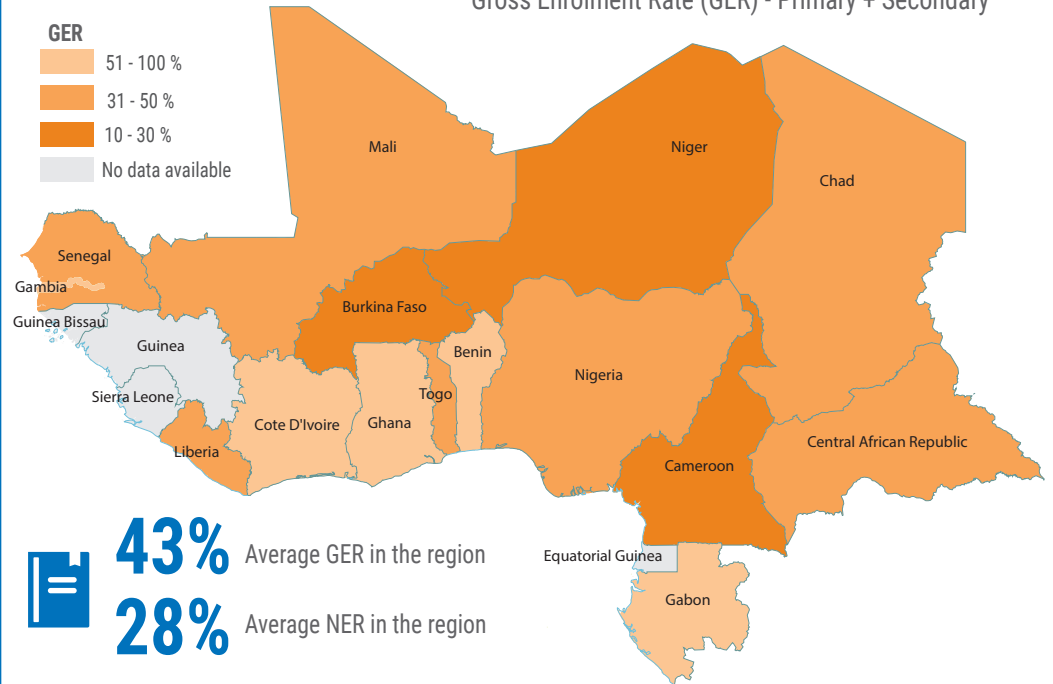
+ 9% People displaced between June 2021 and June 2022

* Burkina Faso, Mali, & Niger

REFUGEE EDUCATION OVERVIEW

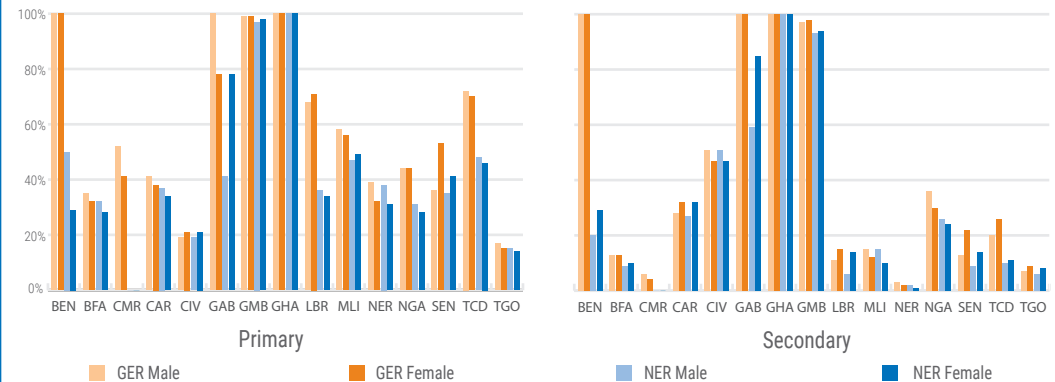
Gross Enrolment Rate (GER) - Primary + Secondary

- GER**
- 51 - 100 %
 - 31 - 50 %
 - 10 - 30 %
 - No data available



43% Average GER in the region
28% Average NER in the region

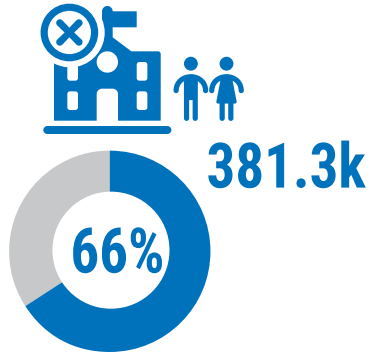
Gross and Net Enrolment Rates (GER and NER) comparison by gender



Selected countries: BEN: Benin; BFA: Burkina Faso; CAF: Central African Republic; CIV: Ivory Coast; CMR: Cameroon; GAB: Gabon; GHA: Ghana; GMB: Gambia; LBR: Liberia; MLI: Mali; NER: Niger; NGA: Nigeria; SEN: Senegal; TCD: Chad; TGO: Togo

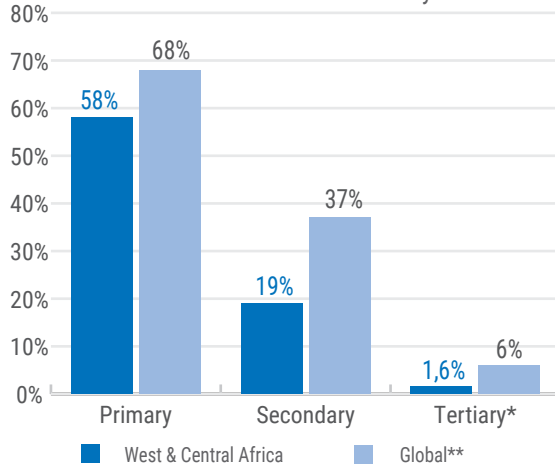
REFUGEE EDUCATION OVERVIEW

Out of school children



Estimated proportion of refugee children out of school

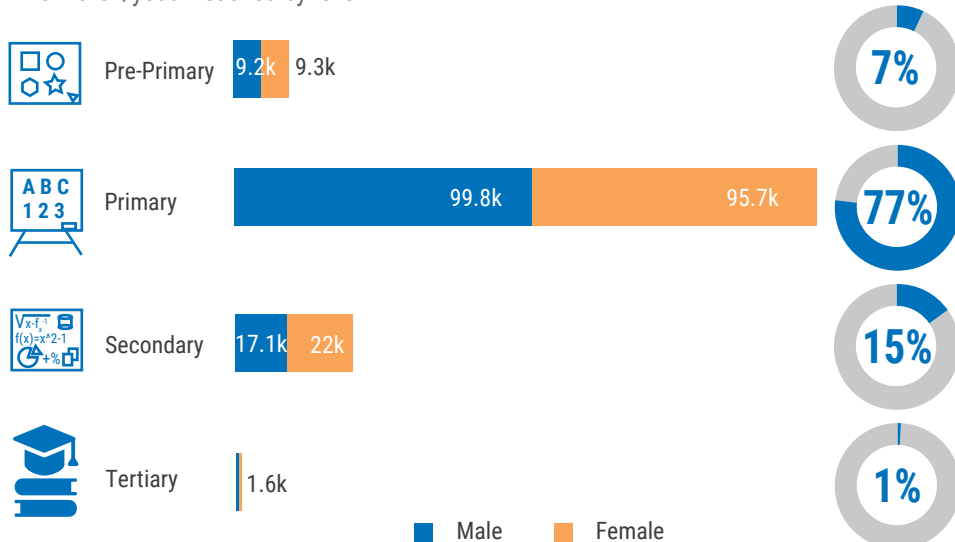
Comparison of refugee enrolment rates by school level for West & Central Africa vs Globally



* The estimated proportion of 18-24 youth enrolled in higher education or technical and vocational education and training (TVET). ** Global enrolment rates refer to the 2020-2021 school year.

UNHCR'S EDUCATION RESPONSE AND ASSISTANCE

Children/youth reached by level



Children/youth reached by status



KEY ACHIEVEMENTS



Classrooms built or rehabilitated



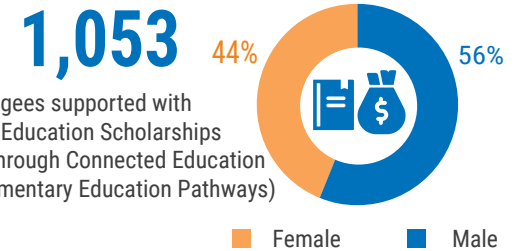
Schools supported with WASH interventions



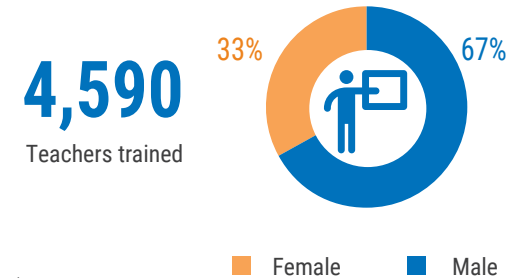
Children assisted with school kits



Children assisted with cash-based interventions (CBI)



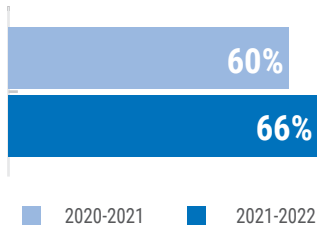
Refugees supported with Higher Education Scholarships (including through Connected Education and Complementary Education Pathways)



4,590
Teachers trained

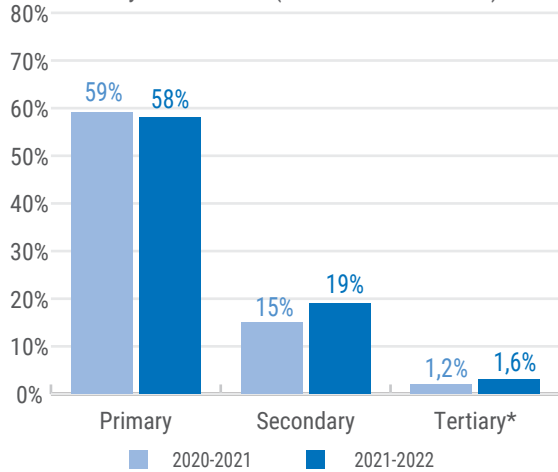
SCHOOL YEAR COMPARISON 2020/21 vs 2021/22

Out of school children



Estimated proportion of refugee children out of school by school year

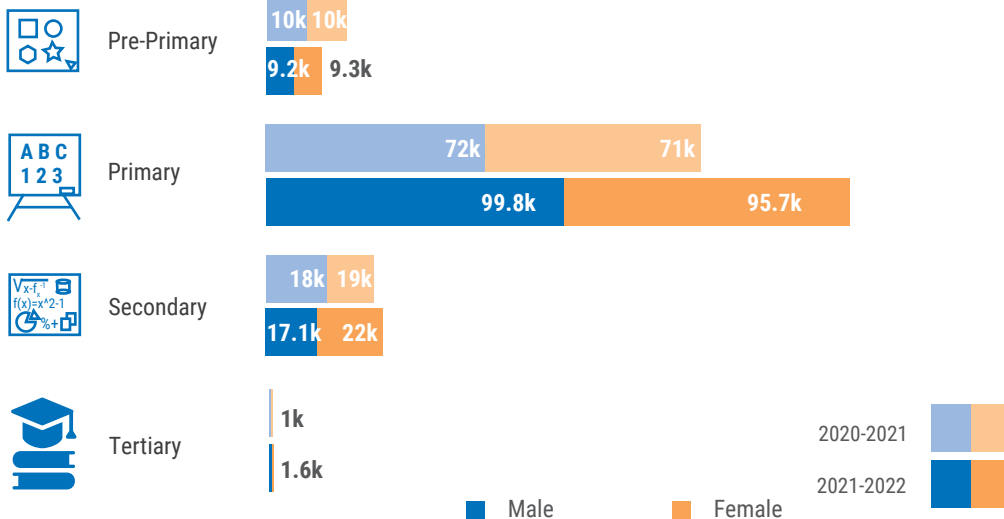
Comparison of refugee enrolment rates in West & Central Africa by school level (2020/21 vs 2021/22)



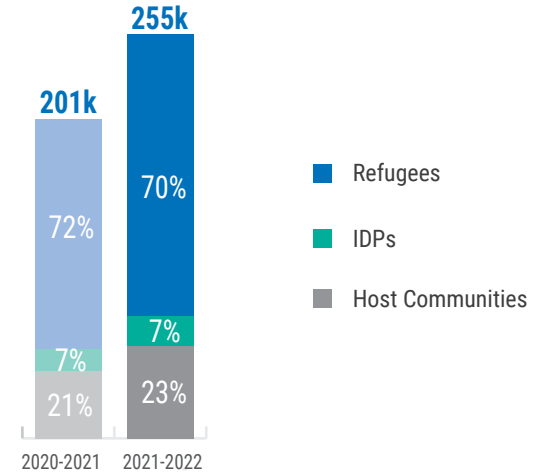
* The estimated proportion of 18-24 youth enrolled in higher education or technical and vocational education and training (TVET).

UNHCR'S EDUCATION RESPONSE AND ASSISTANCE 2020/21 vs 2021/22

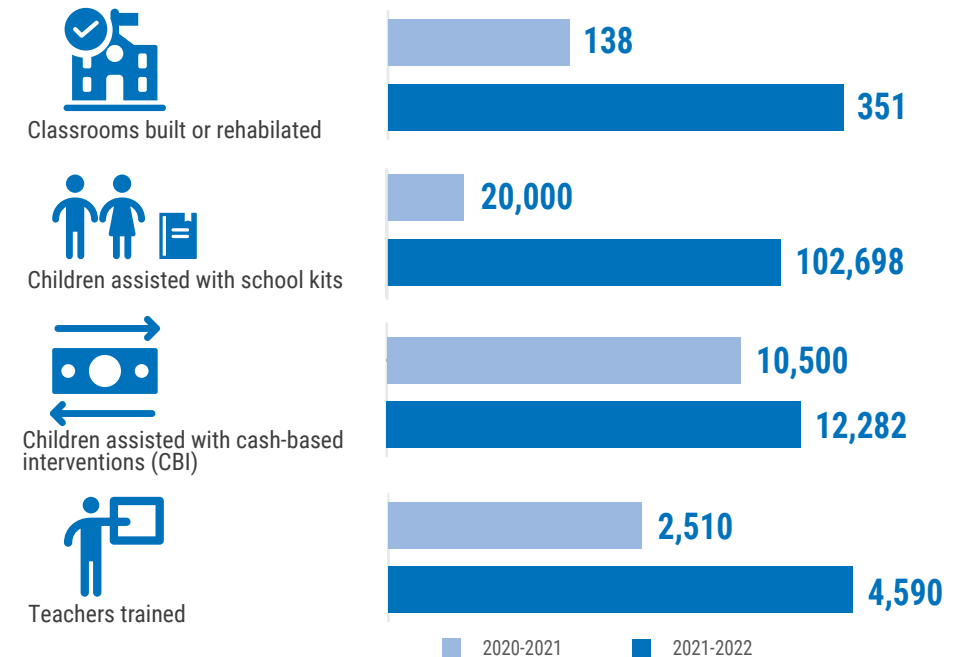
Children/youth reached by level



CHILDREN/YOUTH REACHED BY STATUS 2020/21 vs 2021/22



KEY ACHIEVEMENTS 2020/21 vs 2021/22



Source: Education data: UNHCR RBWCA data consolidation as of August 2022, UNHCR Annual Education Report 2022 (for global refugee enrolment rates); Assistance data: UNHCR and partners data consolidation.