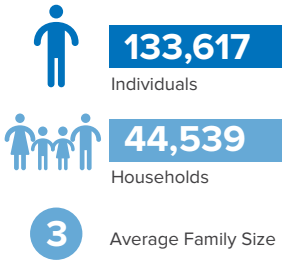


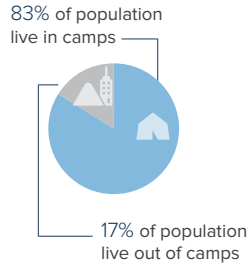
Eritrean Refugees Overview in Sudan

as of 30 September 2022

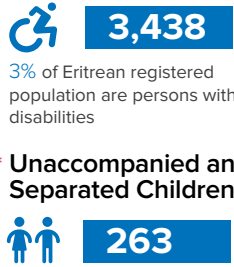
Eritrean Refugees and Asylum-seekers



Population Distribution



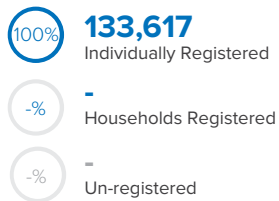
Persons With Disabilities



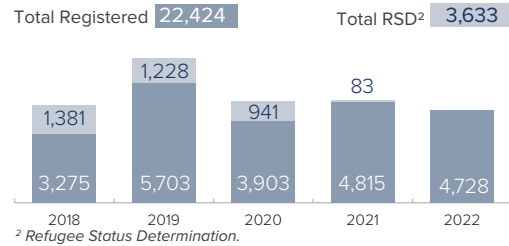
UNHCR continues to receive new arrivals in East Sudan, largely from Eritrea. The Commission of Refugees (COR) receives and assists asylum-seekers at the border where they are temporarily hosted in reception centres.

Within 1-2 weeks they are transported to Shagarab camps where they undergo screening, registration, and Refugee Status Determination (RSD) while receiving life-saving services and shelter.

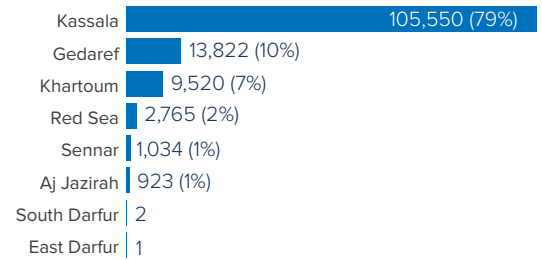
Registration Status



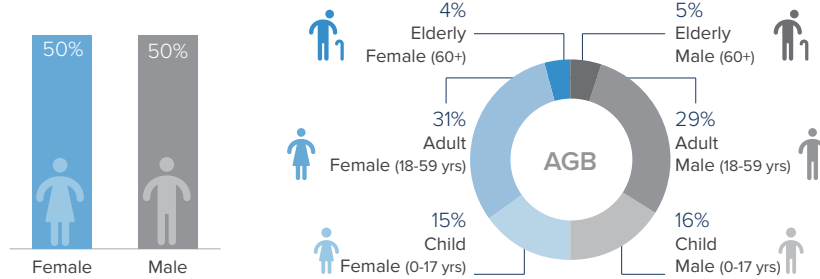
Registration Statistics Since 2018



Eritrean Refugees and Asylum-seekers Per State

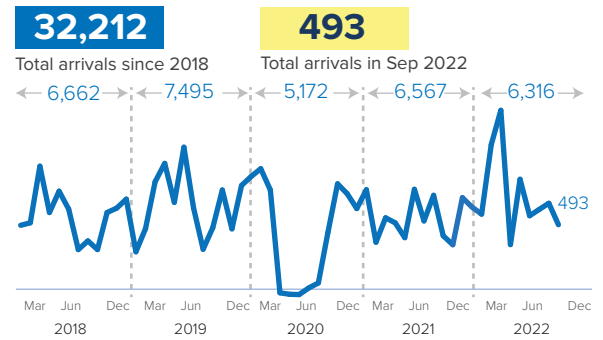


Age-gender Breakdown³

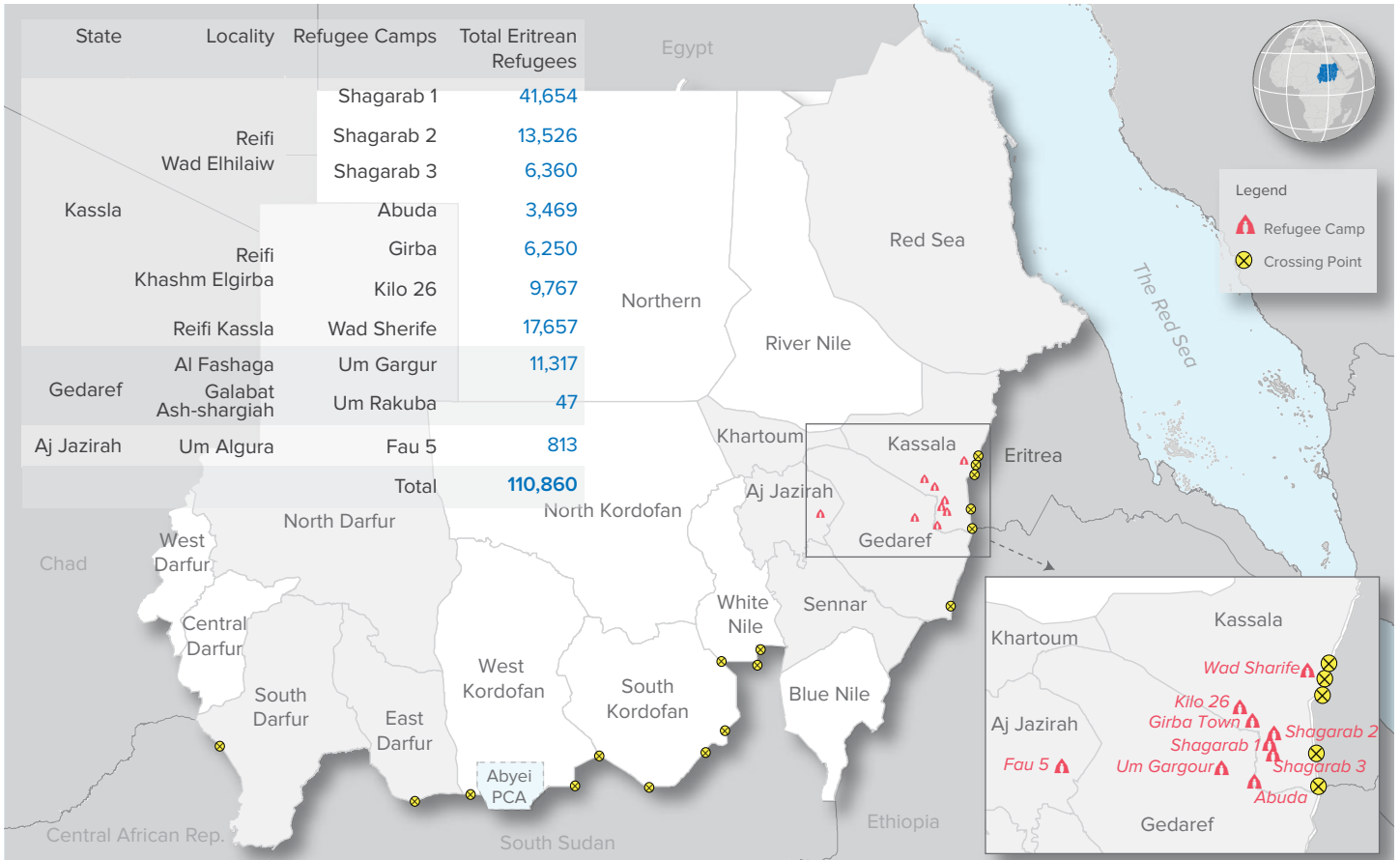


³ Population distribution statistics are based on registered individuals only.
* Registration team conducted verification/revision exercise of UASC figures, all cases exceed 18 year old been excluded.

New Arrivals Trends (2018 - 2022)



Sources: UNHCR, Commission of Refugees (CoR), UNICEF



The boundaries and names shown and the designations used on this map do not imply official endorsement or acceptance by the United Nations.
Abyei region: Final status of the Abyei area is not yet determined.

