

785,406

Total refugees in camps and sites
(89% of the 878,000 refugees registered in Ethiopia)

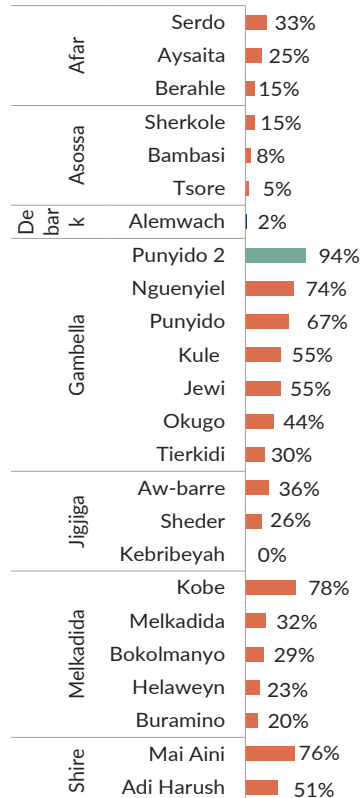
154,810

Households (HHs)
Average HH size : 5

24

Active refugee camps and sites

% of HHs living in adequate dwelling by camp and site



Impact indicator

41% of households living in adequate dwelling

63,454 HHs
321,495 Individuals



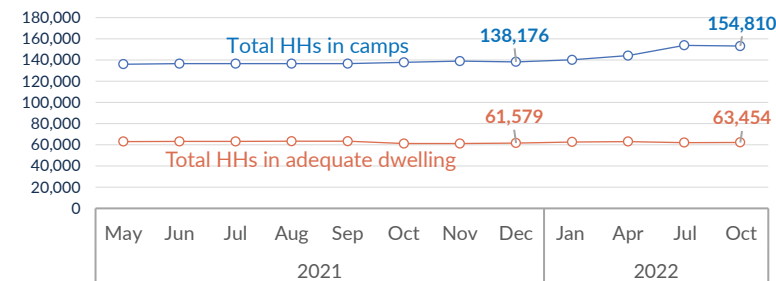
59% of households living in inadequate dwelling

91,577 HHs
463,676 Individuals

Standard 100%

Acceptable (≥95%) Unacceptable (94% - 80%) Critical (≤79%)

Trends | Total HHs in camps and HHs in adequate dwelling



Summary of shelter interventions by location

Locations	Total HHs	HHs in adequate dwelling	Emergency shelter			Transitional shelter			Shelter maintenance			CBI Shelter		
			Planned	Achieved	% Achieved	Plan'd	Achv'd	% Achv'd	Plan'd	Achv'd	% Achv'd	Plan'd	Achv'd	% Achv'd
Afar	11,096	2,321	1,000	692	69%	632	240	38%	50	-	-	-	-	-
Asossa	17,099	1,285	1,513	1,428	94%	41	29	71%	-	-	-	106	68	64%
Debar k	6,024	100	1,540	1,224	79%	314	100	32%	-	-	-	-	-	-
Gambella	73,245	42,526	1,854	1,854	100%	472	325	69%	928	545	59%	-	-	-
Jijiga	7,734	1,424	-	-	-	-	-	-	-	-	-	614	-	-
Melkadida	31,426	10,828	902	592	66%	68	-	-	-	-	-	-	-	-
Shire	8,186	4,970	-	-	-	-	-	-	350	122	35%	-	-	-
Total	154,810	63,454	6,809	5,790	85%	1,527	694	45%	1,328	667	50%	720	68	9%

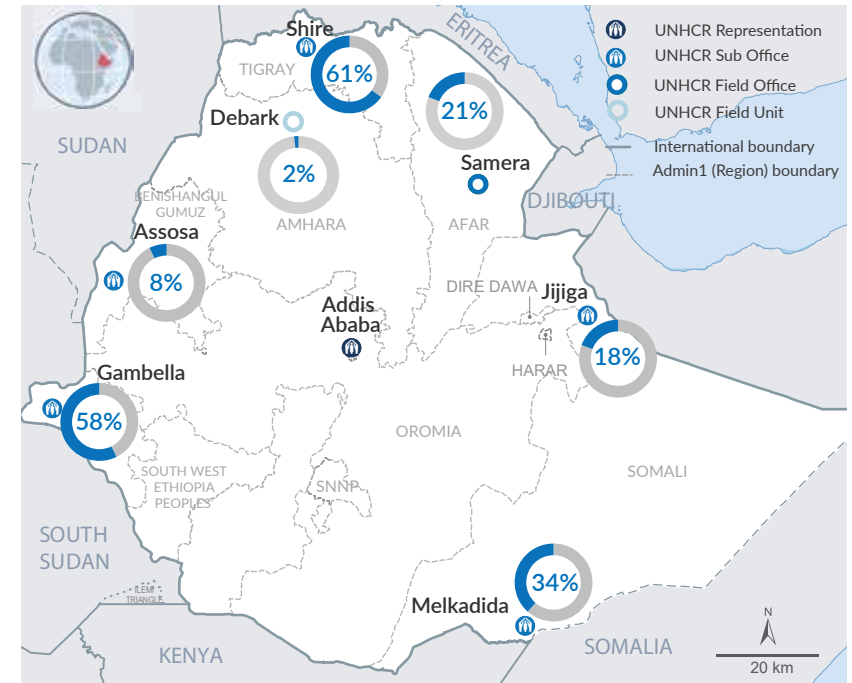
Partnership

Government of Ethiopia
Refugees and Returnees Service (RRS)

Partners

AHA, ANE, SEE

% of HHs living in adequate dwelling by location



The boundaries and names shown and the designations used on this map do not imply official endorsement or acceptance by the United Nations. * Final boundary between the Republic of Sudan and the Republic of South Sudan, and between Ethiopia and Somalia has not yet been determined.

UNHCR in collaboration with Refugee Returnee Service (RRS) and partners provides emergency shelters, site development, and transitional shelter solutions to both refugees and asylum seekers in all sites.

Strategic Objectives:

- Enable refugees to live dignified lives in secure settlements with greater opportunities for self-reliance.
- Enhancing refugee's access to adequate housing and improved living conditions.
- Engagement of refugee and host communities in provision and design of shelter solutions.
- Foster collaboration on shelter and settlement sector response with development partners and private the sector in line with the Global Compact on Refugees (GCR) and the Comprehensive Refugee Response Framework (CRRF).

