

Between January and August there have been (109) large-group displacements affecting 41,369 people (15,563 families). These numbers show a 14% decrease in the number of affected people compared to 2021, despite an increase in the events (15%). In August, sixteen (16) events have been confirmed affecting 5,517 people (2,497 families).

Displacement emergencies occurred in Arenal, Montecristo and Morales (Bolívar), Almaguer, Balboa and Guapí (Cauca), Barbacoas, El Charco, Ipiales, Magüí and Roberto Payán (Nariño), Teorama (Norte de Santander) and Buenaventura (Valle del Cauca). Displacement emergencies were reported for the first time this year in Ipiales, Almaguer, and municipalities of the South of Bolívar.

In the case of Ipiales, violence by presence of illegal armed groups forced the displacement

of indigenous communities in the municipality of Simití in March.

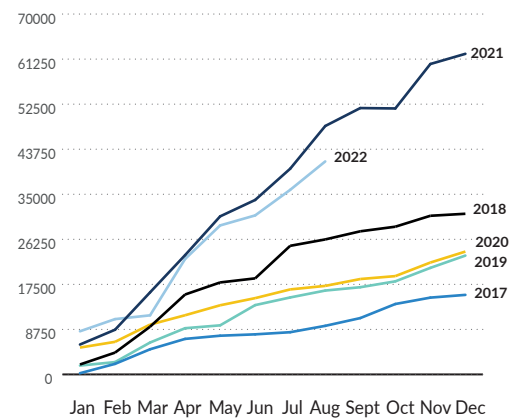
In turn, the constant conflict between AAI and the Public Force caused the second displacement registered in the village of San Pablo in Teorama in 2022.

Ultimately, the armed conflict and contamination by anti-personnel mines and unexploded ordnance (AP-UXOs) has extended to other municipalities in the South of Cauca, like Almaguer and Balboa, adding to the other events that have been reported this year in the neighboring municipality of Argelia.

Among the most vulnerable people affected by these events are those with physical or mental disabilities, young people, elderly people, or single mothers or fathers with minors.

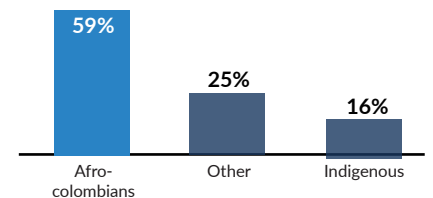
DISPLACEMENT OVER TIME¹

Number of people displaced (2017-2022)



January to August 2022:

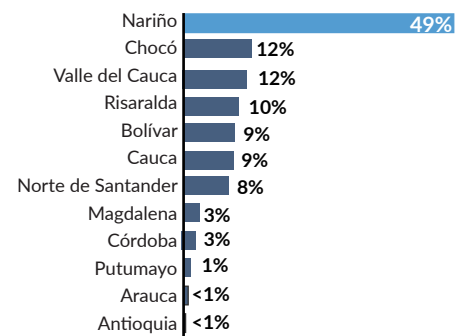
ETHNICITY



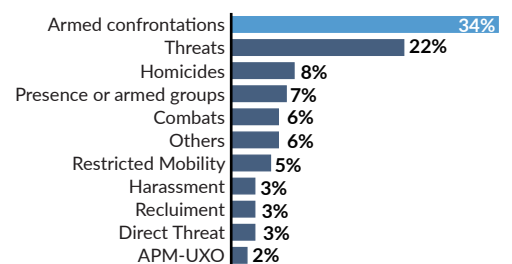
NATIONALITY

Less than 1% of the population victim of displacement was of Venezuelan nationality.

DISPLACEMENT BY DEPARTMENT



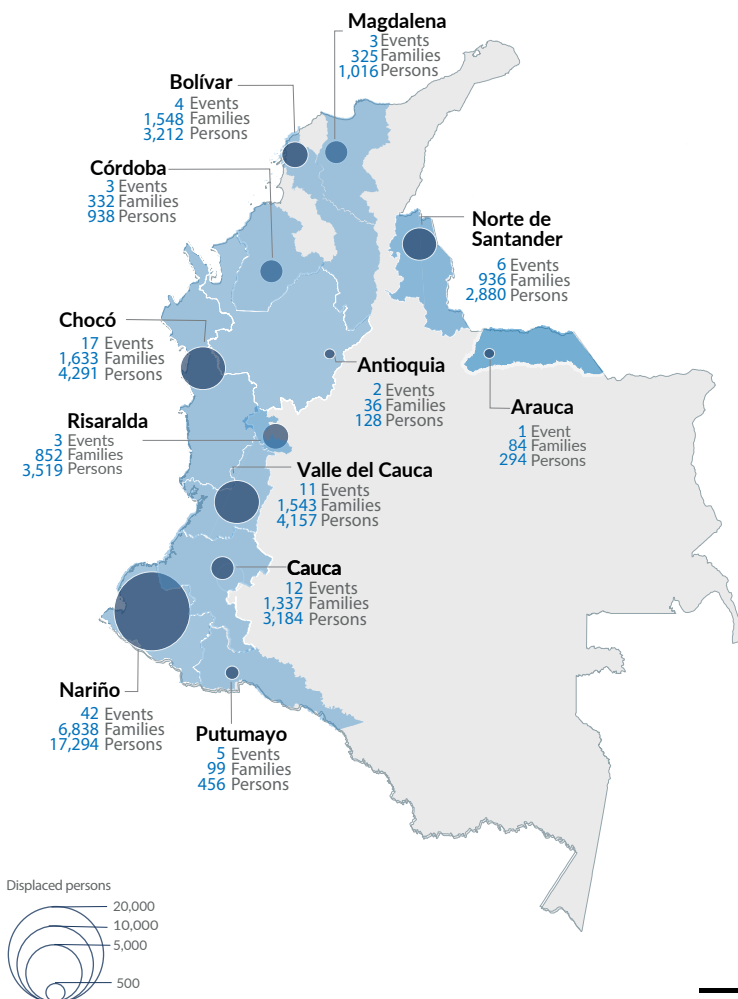
CAUSES OF DISPLACEMENT



109²
Events

15,563
Families

41,369
Persons



¹ Large-group displacements are events where more than 10 families or 50 people are displaced. The displacements reported in the infographic and monitored by UNHCR correspond only to those that occurred in the areas covered by its field offices. ² The large-group internal displacement events are under constant verification and validation, therefore figures are subject to change. Note: This factsheet was produced with the support of the European Union's Civil Protection and Humanitarian Aid Operations department (ECHO).