



Registered Population **880,021**

Households **208,548**

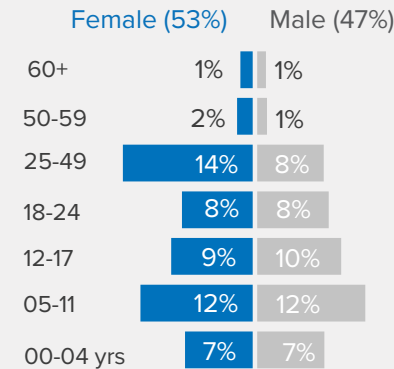
877,804 Refugees **2,217** Asylum seekers

4 Average family size

Country of origin

	Individual	%
South Sudan	408,541	46%
Somalia	251,593	29%
Eritrea	162,274	19%
Sudan	48,551	5%
Kenya	4,034	<1%
Yemen	2,469	<1%
DR Congo	1,056	<1%
Syrian Arab Republic	668	<1%
Other	835	<1%
Total	880,021	

Demography



Children (0 -17 yrs) **512,008 (58%)**

Women & Children **725,611 (82%)**

Persons with Disabilities **2,261**

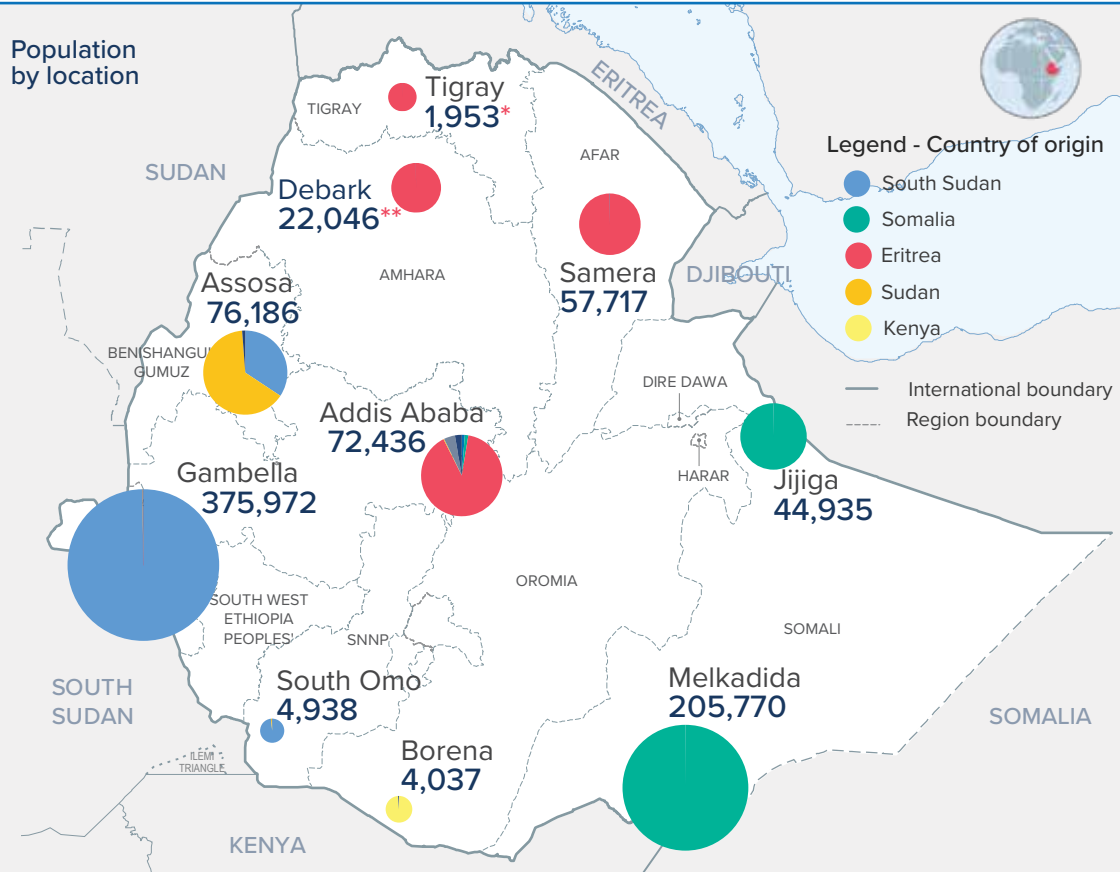
Adolescents and Youth (12-24 yrs) **296,262 (34%)**

Women (18-55 yrs) **197,495 (23%)**

Unaccompanied and Separated Children **40,674**

Percentages represent proportion out of the total registered population

Population by location



The boundaries and names shown and the designations used on this map do not imply official endorsement or acceptance by the United Nations.

Population by type of accommodation

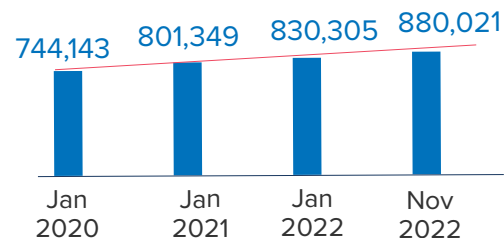
Camps **772,024 (88%)**

Urban **83,361 (9%)**

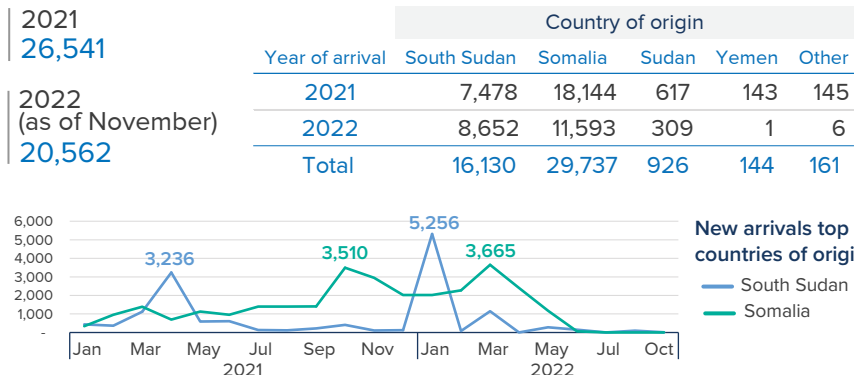
Settlement **24,636 (3%)**

Settlements: refugees living amongst host community

Total population trend



New arrival trend (Individuals)



*1,953 are refugees living out of camps across Tigray. A total of 14,031 refugees registered in Tigray are uncounted on the map. These refugees are from 2 destroyed camps (Hitsats and Shimelba) and 2 closed camps (Mai Aini and Adi Arush).

** Estimated refugee figures which need to be confirmed through a joint RRS/UNHCR verification exercise.

